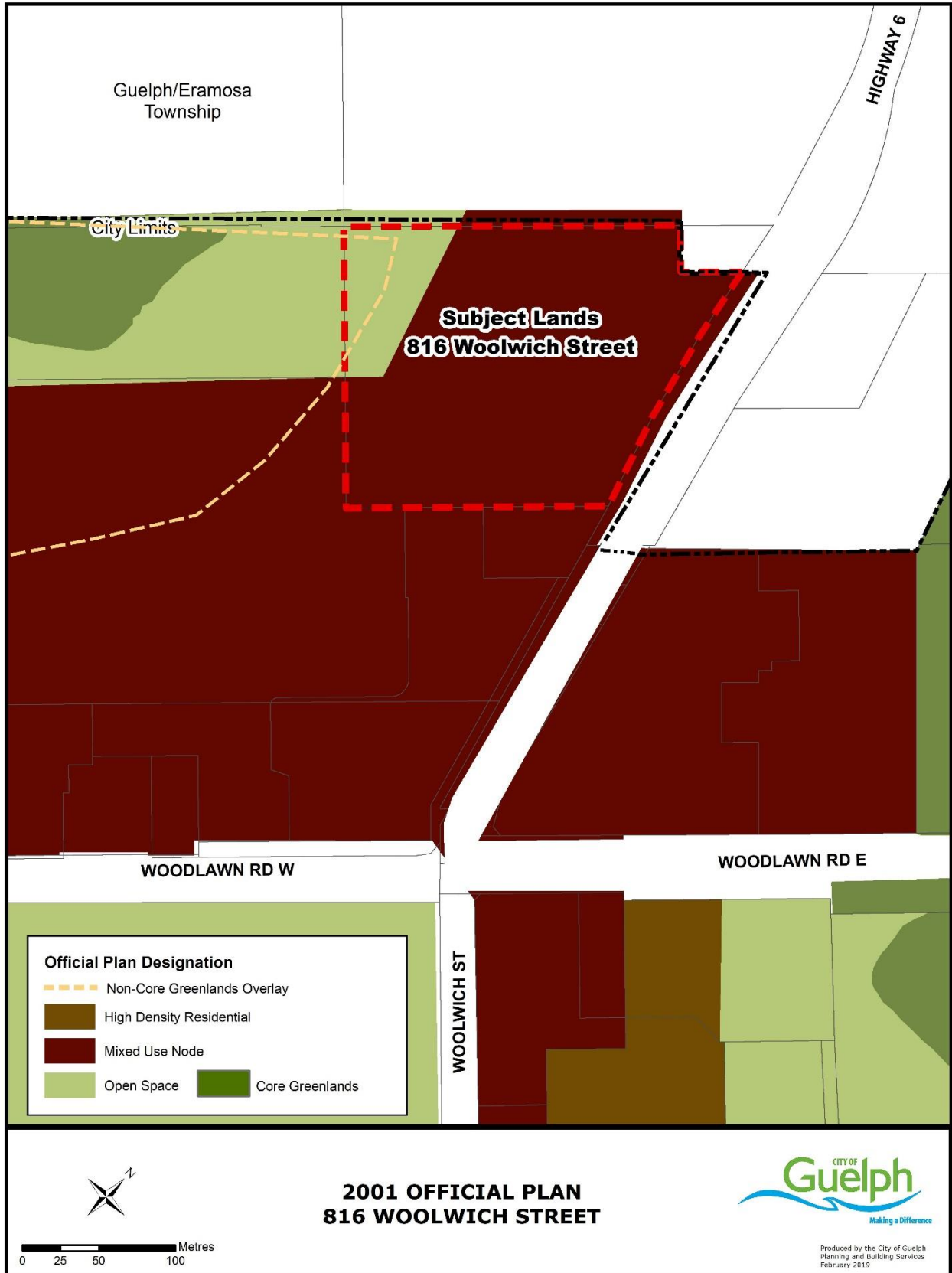


Attachment-4 2001 Official Plan Land Use Designations and Policies



Attachment-4 2001 Official Plan Land Use Designations and Policies (continued)

Mixed Use Nodes

- 7.4.5 The 'Mixed Use Nodes' identified on Schedule 1 in this Plan is comprised of one or several individual developments on one or more properties on both sides of an intersection of major roads within a "node". These areas are intended to serve both the needs of residents living and working in nearby neighbourhoods and employment districts and the wider City as a whole.
- 7.4.6 The intent of the 'Mixed Use Node' designation is to create a well-defined focal point and to efficiently use the land base by grouping complementary uses in close proximity to one another providing the opportunity to satisfy several shopping and service needs at one location. Implementing zoning by-laws may include mechanisms such as minimum density requirements and maximum parking standards to promote the efficient use of the land base.
- 7.4.7 It is intended that where there are adjacent properties within the node that the lands will be integrated with one another in terms of internal access roads, entrances from public streets, access to common parking areas, grading, open space and storm water management systems. Furthermore, it is intended that individual developments within the Mixed Use Node will be designed to be integrated into the wider community by footpaths, sidewalks and bicycle systems and by the placement of smaller buildings amenable to the provision of local goods and services in close proximity to the street line near transit facilities.
- 7.4.8 The boundaries of the 'Mixed Use Node' designation are intended to clearly distinguish the node as a distinct entity from adjacent land use designations. Subject to the policies of Section 9.2, proposals to expand a 'Mixed Use Node' beyond these boundaries or to establish a new node shall require an Official Plan Amendment supported by impact studies as outlined in policies 7.4.48 to 7.4.52.
- 7.4.9 The 'Mixed Use Node' is intended to provide a wide range of retail, service, entertainment and recreational commercial uses as well as complementary uses including open space, institutional, cultural and educational uses, hotels, and livework studios. Medium and high density multiple unit residential development and apartments shall also be permitted in accordance with the policies of Section 7.2. Only small scale professional and medically related offices shall be permitted in this designation in order to direct major offices to the CBD, Intensification Area, Corporate Business Park and Institutional designations.
- 7.4.10 The permitted uses can be mixed vertically within a building or horizontally within multiple-unit mall buildings or may be provided in free-standing individual buildings. Where an individual development incorporates a single use building in excess of 5,575 square metres (60,000 sq. ft) of *gross leasable floor area*, the site shall also be designed to provide the opportunity for smaller buildings amenable to the provision of local goods and services to be located near intersections and immediately adjacent to the street line near transit facilities. These smaller buildings shall comprise a minimum of 10% of the total *gross leasable floor area* within the overall development.

Attachment-4 2001 Official Plan Land Use Designations and Policies (continued)

- 7.4.11 The City will require the aesthetic character of site and building design to be consistent with the City's urban design objectives and guidelines and shall incorporate measures into the approval of Zoning By-laws and site plans used to regulate development within the 'Mixed Use Node' designation to ensure such consistency.
- 7.4.12 The 'Mixed Use Nodes' incorporate land containing existing uses as well as vacant land required to meet the identified needs of the City. In order to promote a mixture of land uses within each 'Mixed Use Node' designation it is the intent of this Plan that new retail development will be limited to the following floor area cumulatively of all buildings within the node:
- Woodlawn / Woolwich Street Node: 42,000 sq. m.
 - Paisley / Imperial Node: 42,000 sq. m.
 - Watson Parkway / Starwood Node 28,000 sq. m.
 - Gordon / Clair Node 48,500 sq. m.
 - Silver Creek Junction: 22,760 sq.m (245,000 square metres) subject to the specific restrictions set out in Section 7.18.5.1.
- 7.4.13 No individual 'Mixed Use Node' shall have more than four (4) freestanding individual retail uses exceeding 5,575 square metres (60,000 sq. ft) of gross leasable floor area.
- 7.4.14 In accordance with Section 9.2, any proposal to exceed the retail floor area limitations within a 'Mixed Use Node' established in policy 7.4.12 or the number of large retail uses in policy 7.4.13 shall require impact studies as outlined in policies 7.4.48 to 7.4.52.

7.13 Greenlands System

The Greenlands System represents a planning framework which recognizes that *natural heritage features* and their associated landscapes need to be considered in a holistic manner in order to provide a comprehensive and integrated approach for conservation and enhancement. The Greenlands System is intended to include those *features* and areas which, are part of the City's *natural heritage* as well as areas in which *natural hazards* may pose a threat to public safety. These often inter-related areas include:

- wetlands;
- forestry resources;
- streams and valleys;
- ponds;
- areas of natural and scientific interest;
- fish, wildlife and plant habitats;
- flood plains and hazard lands;
- habitat areas for endangered and threatened species.

Attachment-4 2001 Official Plan Land Use Designations and Policies (continued)

7.13.1 Core Greenlands

The 'Core Greenlands' land use designation recognizes areas of the Greenlands System which have greater sensitivity or significance. The following natural heritage feature areas have been included in the 'Core Greenlands' designation of Schedule 1: provincially significant wetlands, the significant portion of habitat of threatened and endangered species, and the significant areas of natural and scientific interest (ANSI). Natural hazard lands including steep slopes, erosion hazard lands and unstable soils may also be associated with the 'Core Greenlands' areas. In addition, the floodways of rivers, streams and creeks are found within the 'Core Greenlands' designation.

1. Policies relating to natural heritage features are contained in Section 6 of this Plan.
2. Policies relating to natural hazard lands are contained in Section 5 of this Plan.

7.13.2 The natural heritage features contained within the 'Core Greenlands' designation are to be protected for the ecological value and function. Development is not permitted within this designation. Uses that are permitted include conservation activities, open space and passive recreational pursuits that do not negatively impact on the natural heritage features or their associated ecological functions.

7.13.3 The natural heritage features contained within the 'Core Greenlands' designation are outlined on Schedule 2 of this Plan. Where a development proposal is made on adjacent lands to these natural heritage features, the proponent is responsible for completing an environmental impact study in accordance with the provisions of subsection 6.3 of this Plan. Where appropriate and reasonable, consideration will be given to measures to provide for the enhancement of natural heritage features within the 'Core Greenlands' designation as part of such an environmental impact study.

7.13.4 In implementing the Greenlands System provisions of this Plan, 'Core Greenland' areas shall be placed in a restrictive land use category of the implementing *Zoning By-law*, which prohibits *development* except as may be necessary for the on-going management or maintenance of the natural environment.

7.13.5 Non-Core Greenlands Overlay

The lands associated with the Non-Core Greenlands overlay on Schedule 1 may contain natural heritage features, natural feature adjacent lands and natural hazard lands that should be afforded protection from development. The following natural features and their associated adjacent lands are found within the Non-Core Greenlands area: fish habitat, locally significant wetlands, significant woodlands, significant environmental corridors and ecological linkages, significant wildlife habitat. In many instances these natural features also have hazards associated with them which serve as development constraints.