

GROUND FLOOR PLATE - COMMERCIAL UNIT 102

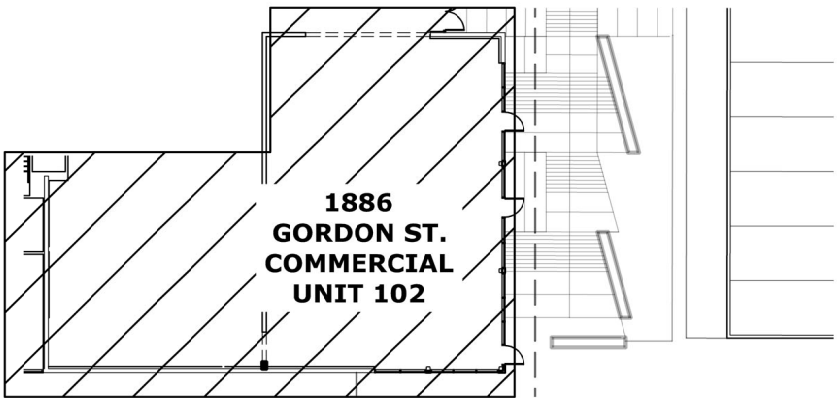
1886 GORDON STREET - COMMERCIAL UNIT 102

TOTAL FLOOR SQ.FT.	3,416 SQ.FT.
SQ.FT. (OPEN TO ABOVE)	2,162 SQ.FT.
SQ.FT. (SHARED)	1,254 SQ.FT.
PARKING SPACES	22

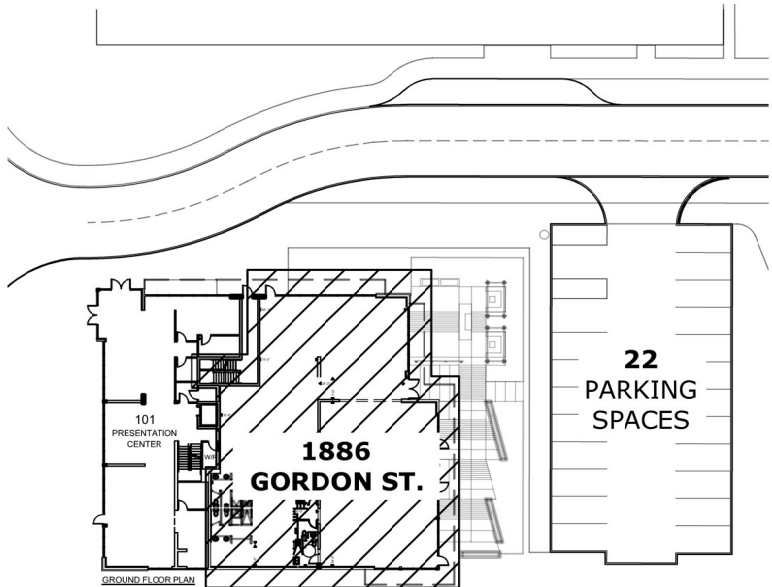
DATE:	REV. NO.	NOTES
2020 03 04	00	OPTION C
2019 12 11	00	COMM. SPACE

ALL FLOOR PLANS ARE APPROXIMATE DIMENSIONS AND SUBJECT TO CHANGE.
ACTUAL USABLE FLOOR SPACE MAY VARY FROM STATED FLOOR AREAS.
E. & O.E. © THE TRICAR GROUP.

1886 Gordon Street
Ground Floor Commercial Unit 102 - Option C (Shared)
1886 GORDON ST. GUELPH, ONTARIO
2-STOREY BUILDING



SITE PLAN - 1886 GORDON STREET



SITE PLAN - 1886 GORDON STREET



KEY PLAN

