

# Statutory Public Meeting: City-initiated Official Plan Amendment for the Emma Street to Earl Street Pedestrian Bridge

Monday, February 8, 2021

Melissa Aldunate, Manager Policy Planning and Urban Design  
Leah Lefler, Environmental Planner

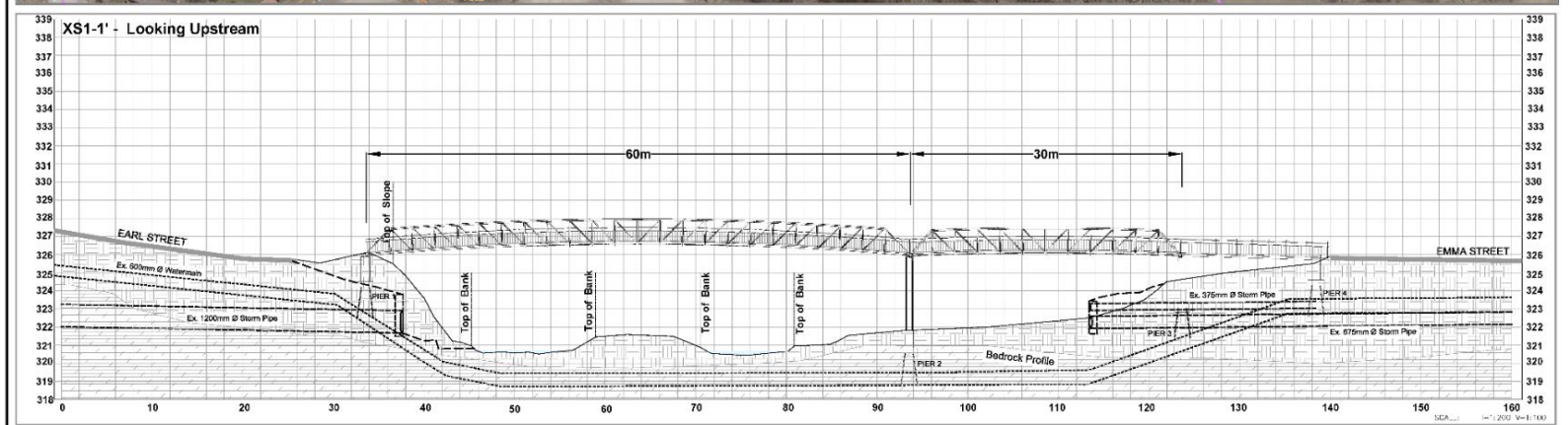
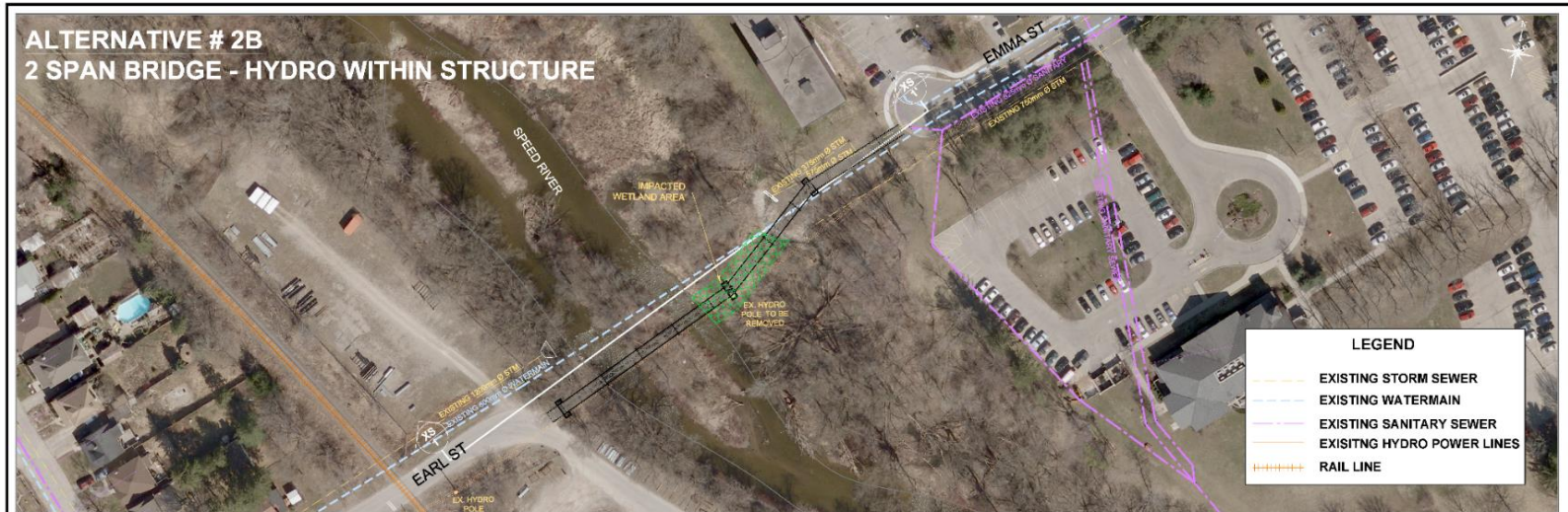
# Background

- A Schedule B Class Environmental Assessment was completed for the Emma Street to Earl Street pedestrian bridge.
- Alternative 2b – Two-Span Bridge (Hydro within Structure) was identified as the preferred alternative.
- Construction of the preferred alternative requires a site-specific Official Plan Amendment to address a technical inconsistency between the objectives and intent of the Natural Heritage System and a permitted use.
- City Council directed staff to initiate the required site-specific amendment to the Official Plan at their September 8, 2020 Committee of the Whole meeting.

# Emma Street to Earl Street Future Pedestrian Bridge Location



# Description of Preferred Alternative



						<b>EMMA STREET TO EARL STREET</b> <b>PEDESTRIAN BRIDGE</b> Pier and Structure	
MANAGER OPERATING DIVISION		No. DATE 1 23/03/2017		ISSUED FOR REVISIONS		DESIGNER DATE 23/03/2017	
		N.T.M. SIGNED				SHEET NO.	

# Existing Official Plan Policy

- The Official Plan limits essential transportation infrastructure as a permitted use in the Natural Heritage System.
- A key objective of Natural Heritage System policy is to protect, maintain, enhance and restore the Natural Heritage System to the greatest extent possible, while providing for compatible development and activities that do not negatively impact natural heritage features and areas, and their ecological or hydrologic functions.
- The preferred alternative for the Emma Street to Earl Street pedestrian bridge meets the intent of Official Plan Natural Heritage System policy.



# Proposed Official Plan Amendment

## **4.1.2 General Permitted Uses**

4.1.2.12 In addition to the General Permitted Uses of Section 4.1.2, the following additional uses may be permitted on lands identified for the Emma Street to Earl Street pedestrian bridge as described in the Emma Street to Earl Street Pedestrian Bridge Schedule B Municipal Environmental Assessment Report, subject to the requirements of 4.1.2.8, where it has been demonstrated through an EIS or EA, to the satisfaction of the City, in consultation with the GRCA and/or the MNRF, that there will be no negative impacts on the Significant Wetland or its ecological and hydrologic functions, the Significant Woodland or its ecological and hydrologic functions, Significant Wildlife Habitat or its ecological functions, and their established buffers:

- essential linear infrastructure and their normal maintenance; and
- essential transportation infrastructure and their normal maintenance.

## Next steps

- Following the statutory public meeting, comments received will be reviewed and assessed against the Provincial Policy Statement.
- A recommendation report will be presented to Council in Q2 2021.