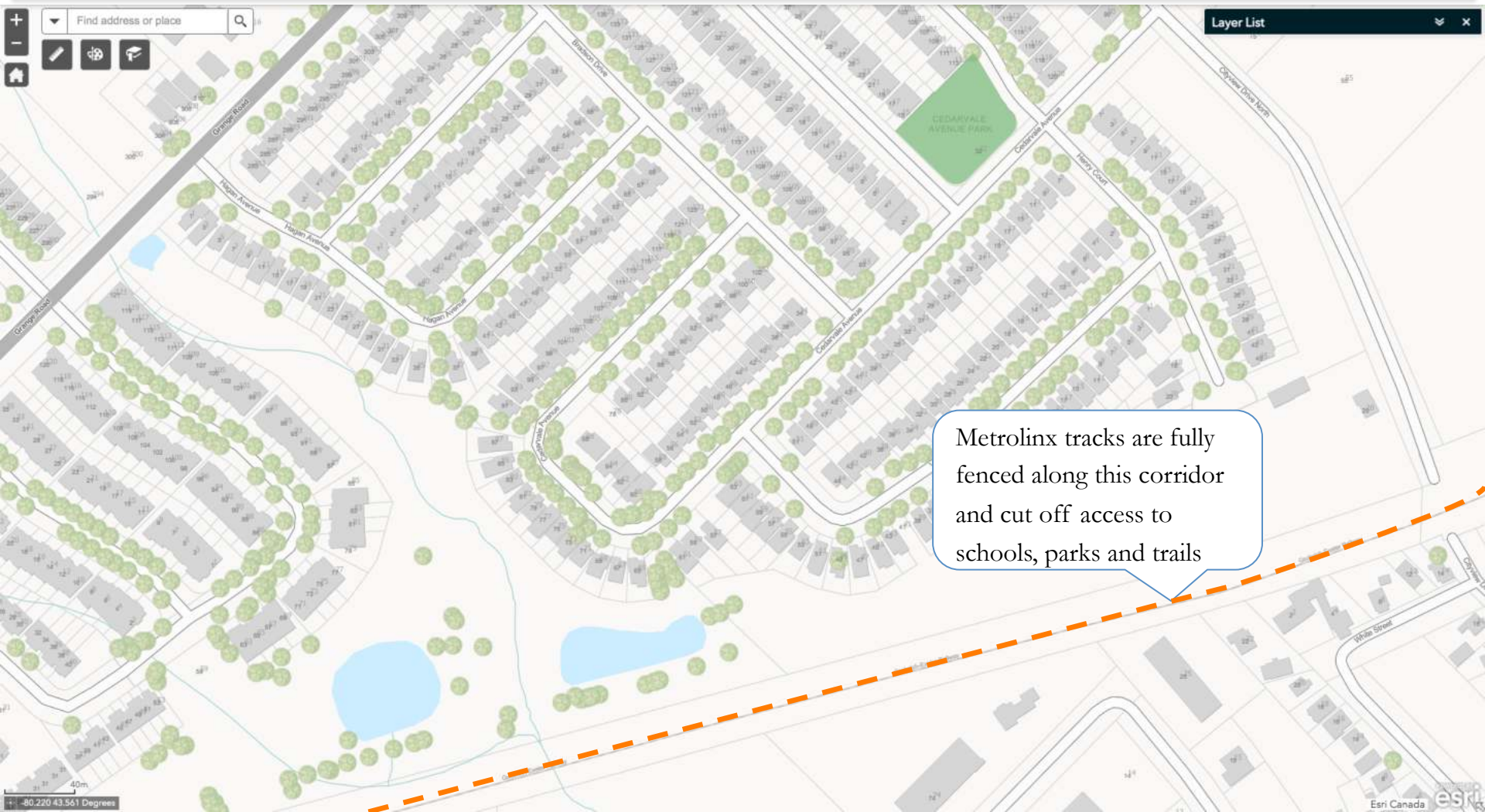




Our community is becoming a destination. City residents access the former reformatory lands and visit businesses in the area. We need to invest in infrastructure to make the community safer and to make it attractive for future development. Let's make this a community to discover!

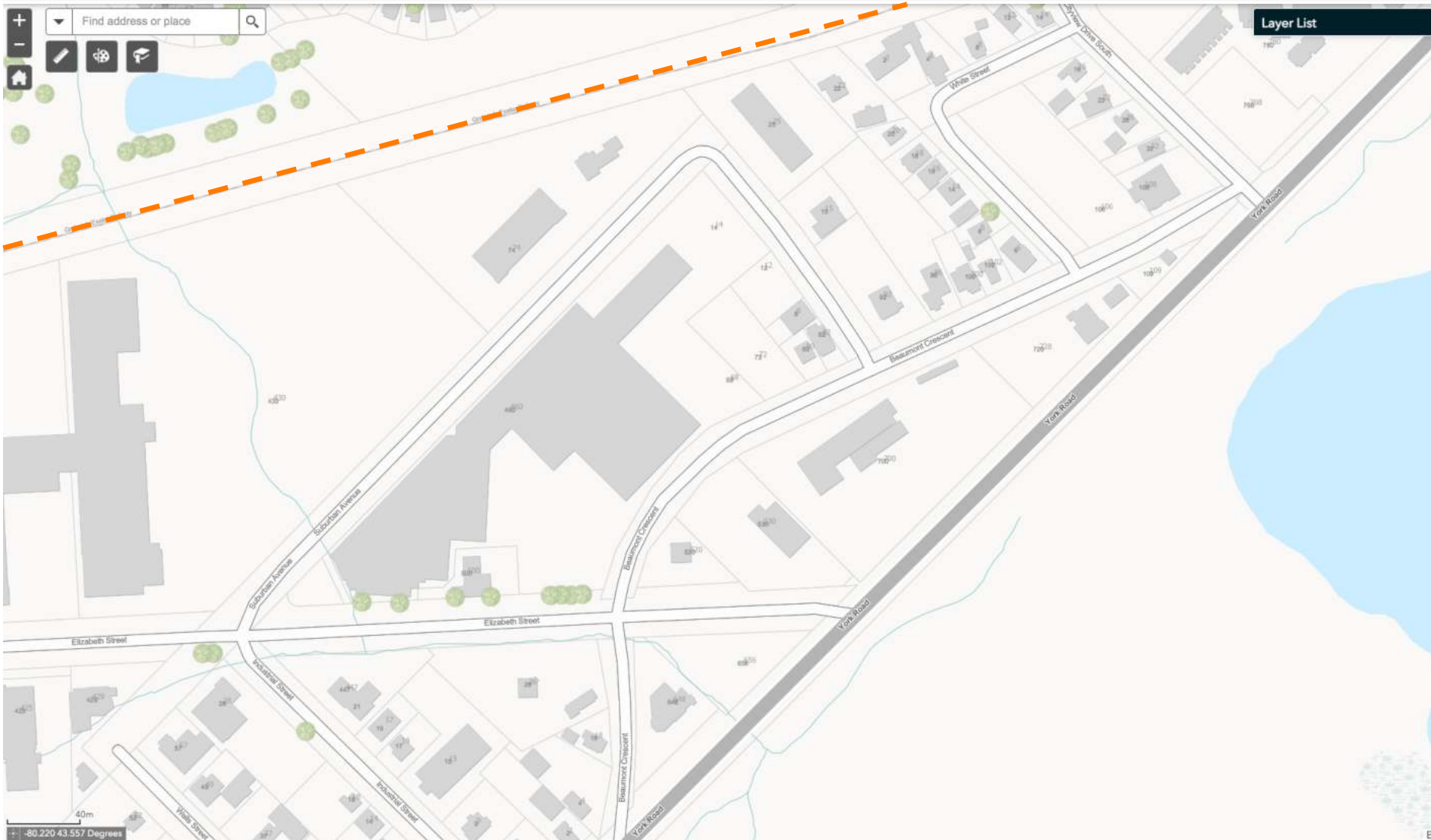


# Neighbourhood layout – East Guelph, north of study area



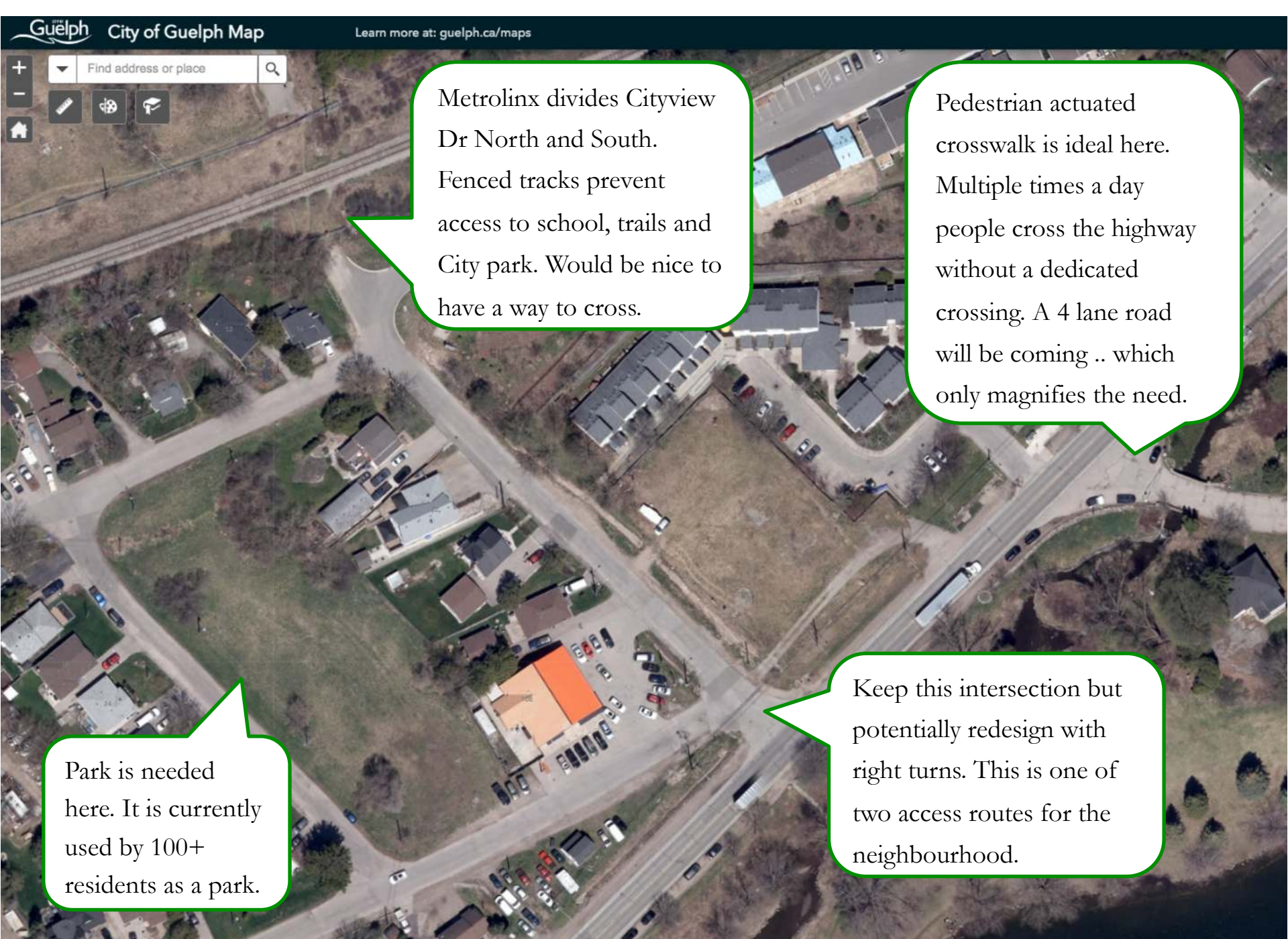
Community to the north of the study area has municipal parks, street trees, stormwater catchment ponds and a trail network. Residents to the south are unable to cross due to fencing.

# Neighbourhood layout – East Guelph, within study area



Within the study area there is a big contrast to what is present just north of the Metrolinx Rail line. There are sparse street trees, no stormwater areas, a lack of safe routes and no parks.





Metrolinx divides Cityview Dr North and South. Fenced tracks prevent access to school, trails and City park. Would be nice to have a way to cross.

Pedestrian actuated crosswalk is ideal here. Multiple times a day people cross the highway without a dedicated crossing. A 4 lane road will be coming .. which only magnifies the need.

Park is needed here. It is currently used by 100+ residents as a park.

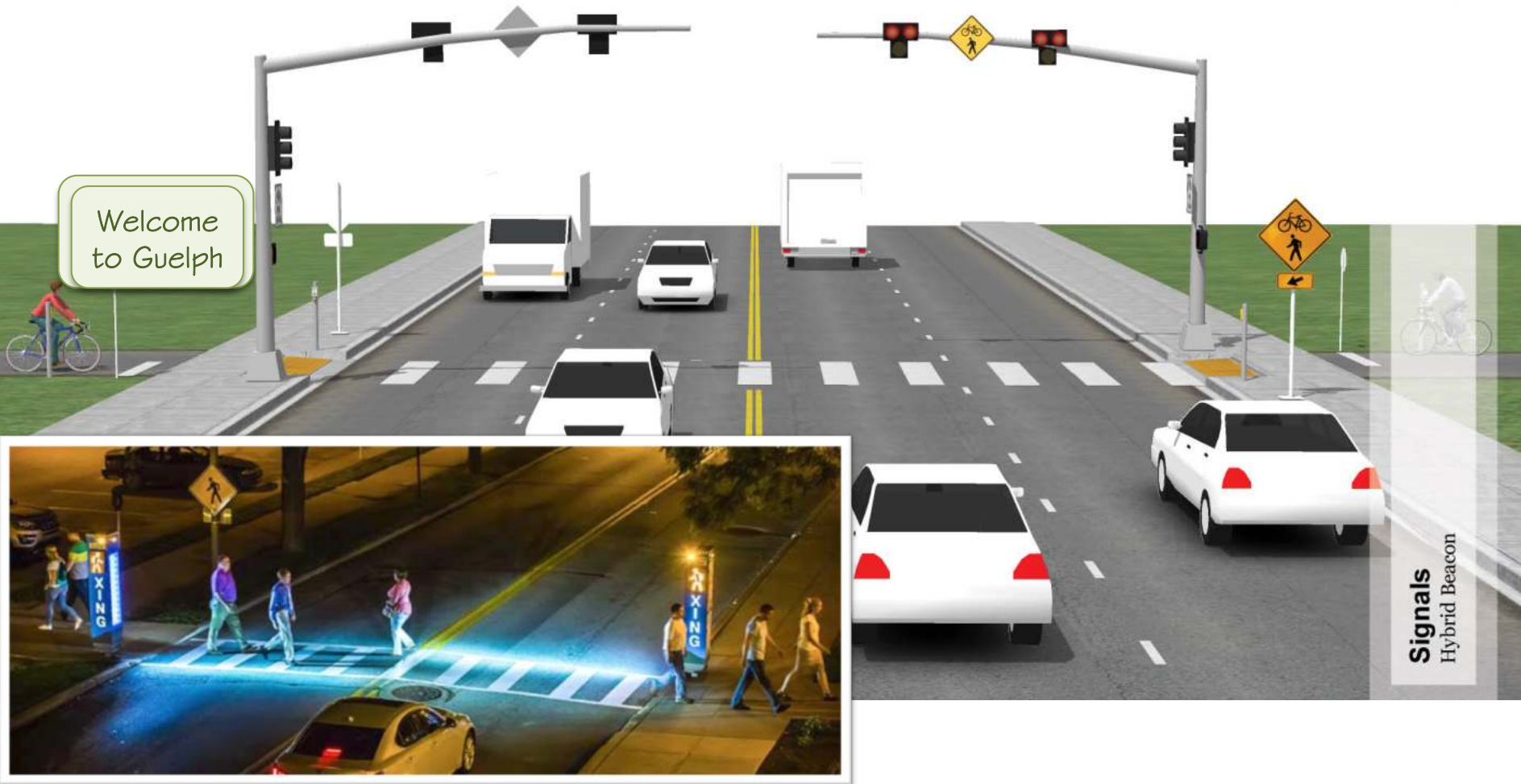
Keep this intersection but potentially redesign with right turns. This is one of two access routes for the neighbourhood.



Let's make safe and accessible routes a priority



Lack of dedicated sidewalks, bike paths and a pedestrian crossing is a detriment to this community. There is a plan for a 4 lane road – which magnifies the need for safe crossing.

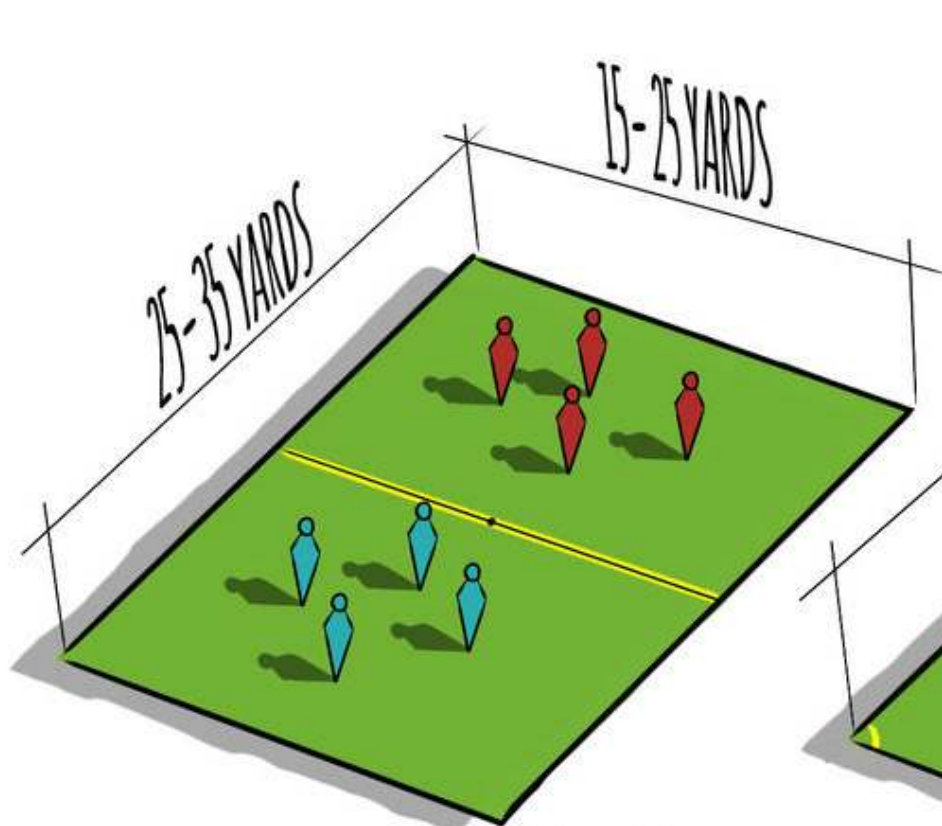


Example of pedestrian actuated signal on 4 lane road. In Guelph we have an example of this on Wellington Road close to the skate park. There is opportunity to make this a gateway entrance for East Guelph. Visibility is important to maintain safety – considerations for design could include night lighting / road demarcations to make it visible to both motorists and pedestrians.

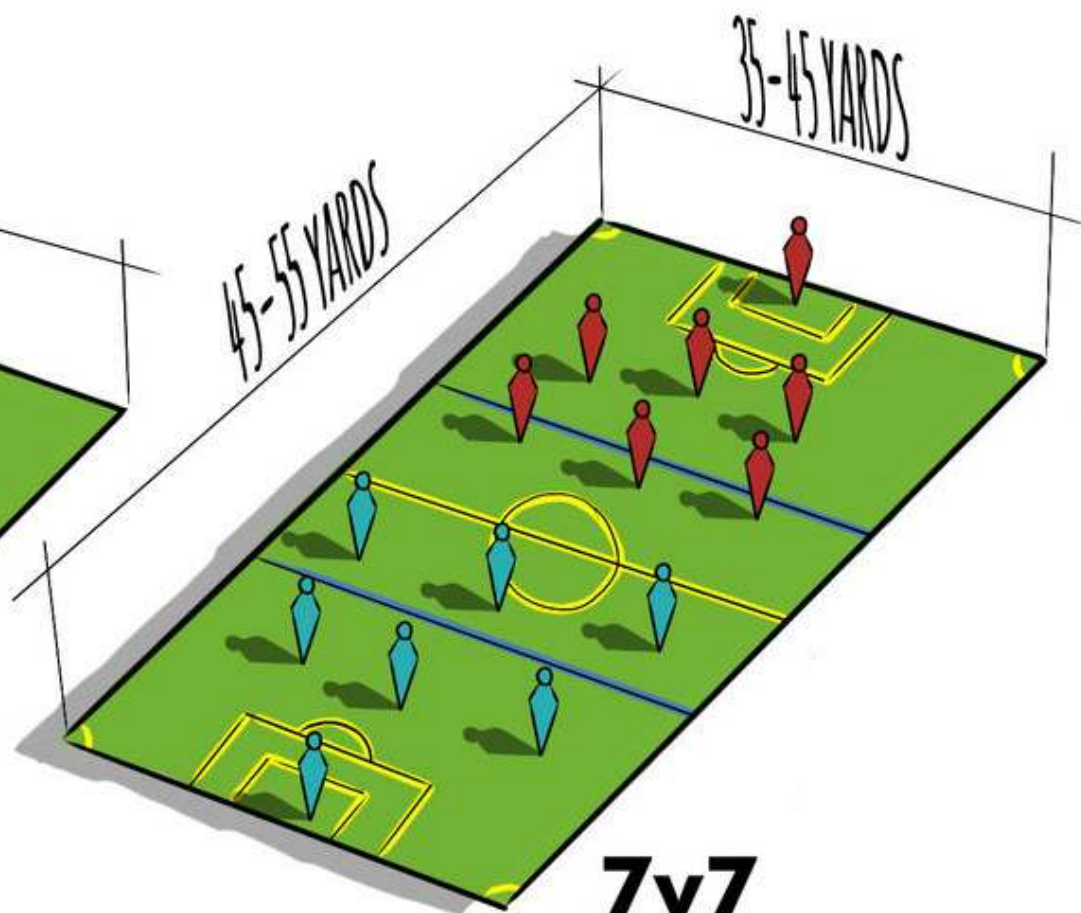




Regular flooding at Cityview Dr S and York Road. Would like to see recommendation added to the land use study to assess stormwater drainage and look at design enhancements to manage water

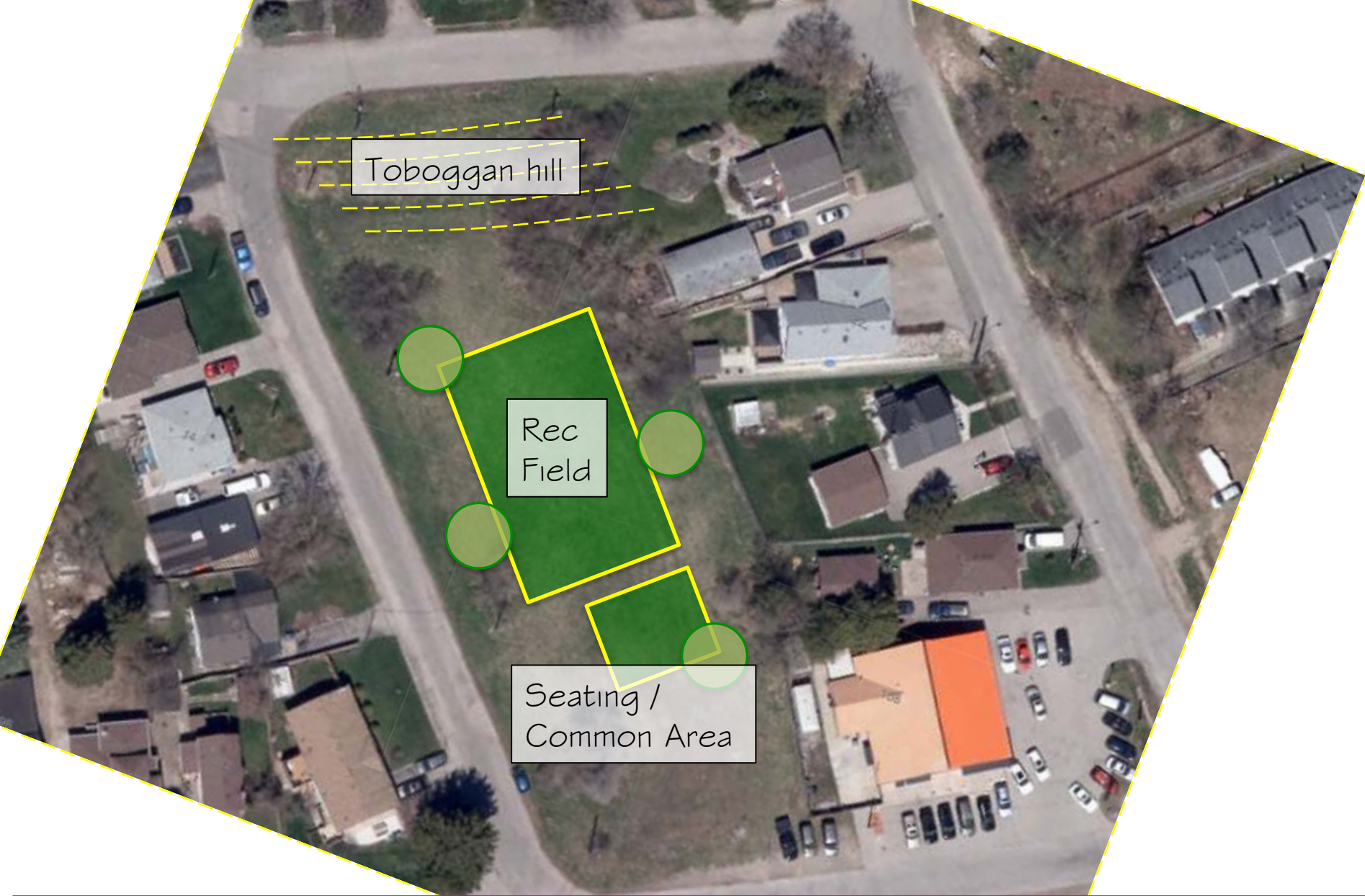


**4v4**



**7v7**





A neighbourhood park with a 40m by 30m rec field (6 by 6), the existing toboggan hill, a common area for seating / swings, and several shade trees. We need all this space dedicated for parkland.