

City of Guelph response to Provincial consultation on growing the size of the Greenbelt

**Committee of the Whole
April 6, 2021**

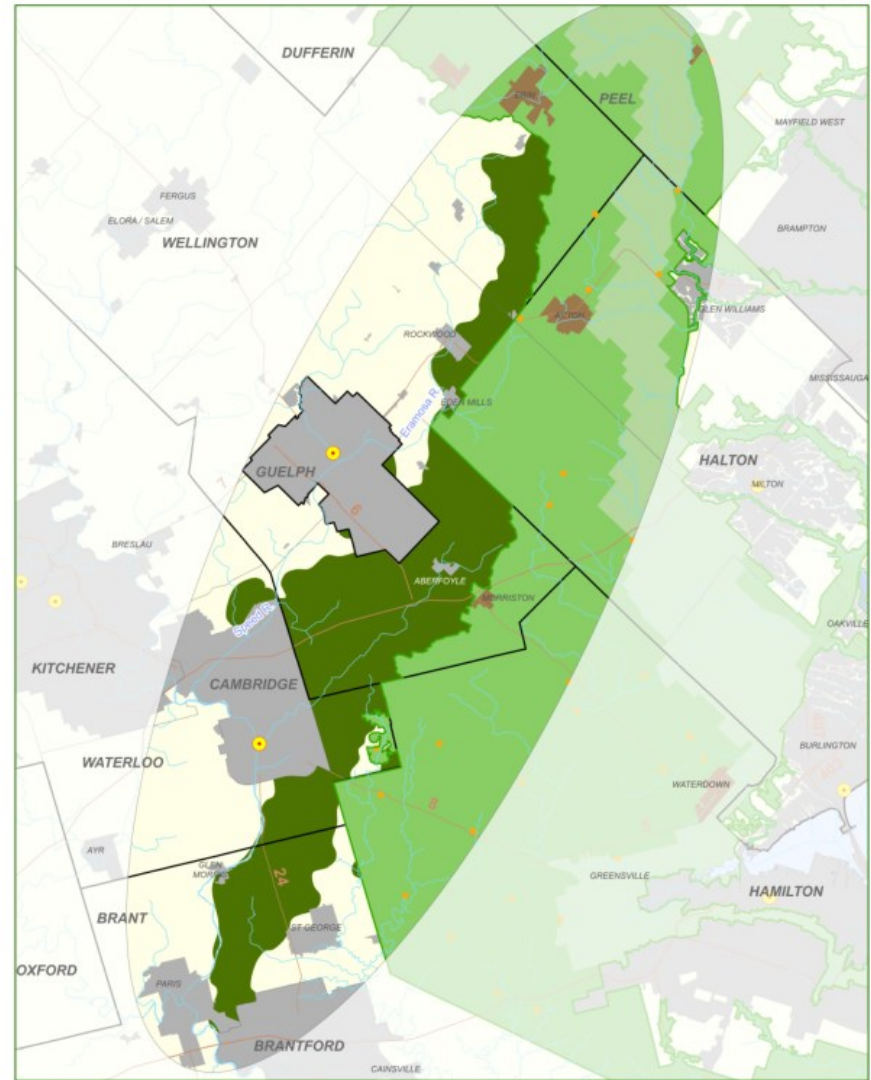
Provincial proposal to grow the size of the greenbelt

- Proposal released on February 17, 2021 through the Environmental Registry
- Focuses on 2 areas
 - A study area of lands focused on the Paris Galt Moraine,
 - Ideas for adding, expanding, and further protecting Urban River Valleys
- Province has identified 6 principles it will follow for expansions of the Greenbelt

Paris Galt Moraine study area:

- Light green on the map is existing greenbelt
- Dark green on the map is Paris Galt Moraine Study Area
- Limits of the study area are not a proposed greenbelt boundary
- Province is seeking input on how to move from study area to an area for inclusion in the Greenbelt
- Does not include any lands in Guelph

Growing the Greenbelt Study Area – Paris Galt Moraine



City Response regarding the Paris Galt Moraine

- The study area for the Paris Galt Moraine would benefit from an increased understanding using a watershed-based approach to identify areas for inclusion in the Greenbelt Plan
- Inclusion of settlement areas intended to accommodate growth within the Greenbelt is not appropriate
- The Province needs to ensure any expansion of the Greenbelt is balanced with other Provincial priorities, including water supply needs to support growth

Provincial proposal for Urban River Valleys

- Urban River Valley designation applies to publicly owned lands in river valleys in an urban context
- Intended to connect protected countryside of the Greenbelt to the Great Lakes and inland lakes
- Includes 60m offset from the water's edge
- Province is seeking feedback on:
 - Connections to the Paris Galt Moraine through the Speed and Eramosa Rivers in the urban areas of Guelph and Cambridge
 - Ideas for adding other municipally supported Urban River Valleys and/or additions of publicly owned land to existing Urban River Valleys

City Response regarding Urban River Valleys

- The inclusion of the Speed and Eramosa River through Guelph does not provide a connection to a Great Lake or Inland Lake
- The Greenbelt Plan also has no connections to Lake Erie
- No additional value or protection to river valley systems beyond what the City's OP already achieves

Recommendation

- That the City's comments as included in the staff report be endorsed and submitted to the Ministry of Municipal Affairs and Housing as the City's response to the provincial consultation on growing the size of the Greenbelt.
- The deadline for comments is April 19, 2021