

# 785 York Road Ontario Reformatory

## **Appendix A**

June 14, 2021

# Guelph Innovation District Secondary Plan: Cultural Heritage Resources

## Legend

- Secondary Plan Boundary
- Roads
- Railway
- Pedestrian Crossings
- Existing Built Form
- Public Views
- Waterbody
- Natural Heritage System
- Contours (0.5m intervals)

## Cultural Heritage Resources (CHR)

- Non-Listed CHR
- Municipally Listed CHR
- Provincially Listed CHR
- Designated CHR (Part IV O.H.A.)
- Cultural Heritage Landscape



# Guelph Innovation District Secondary Plan: Land Use



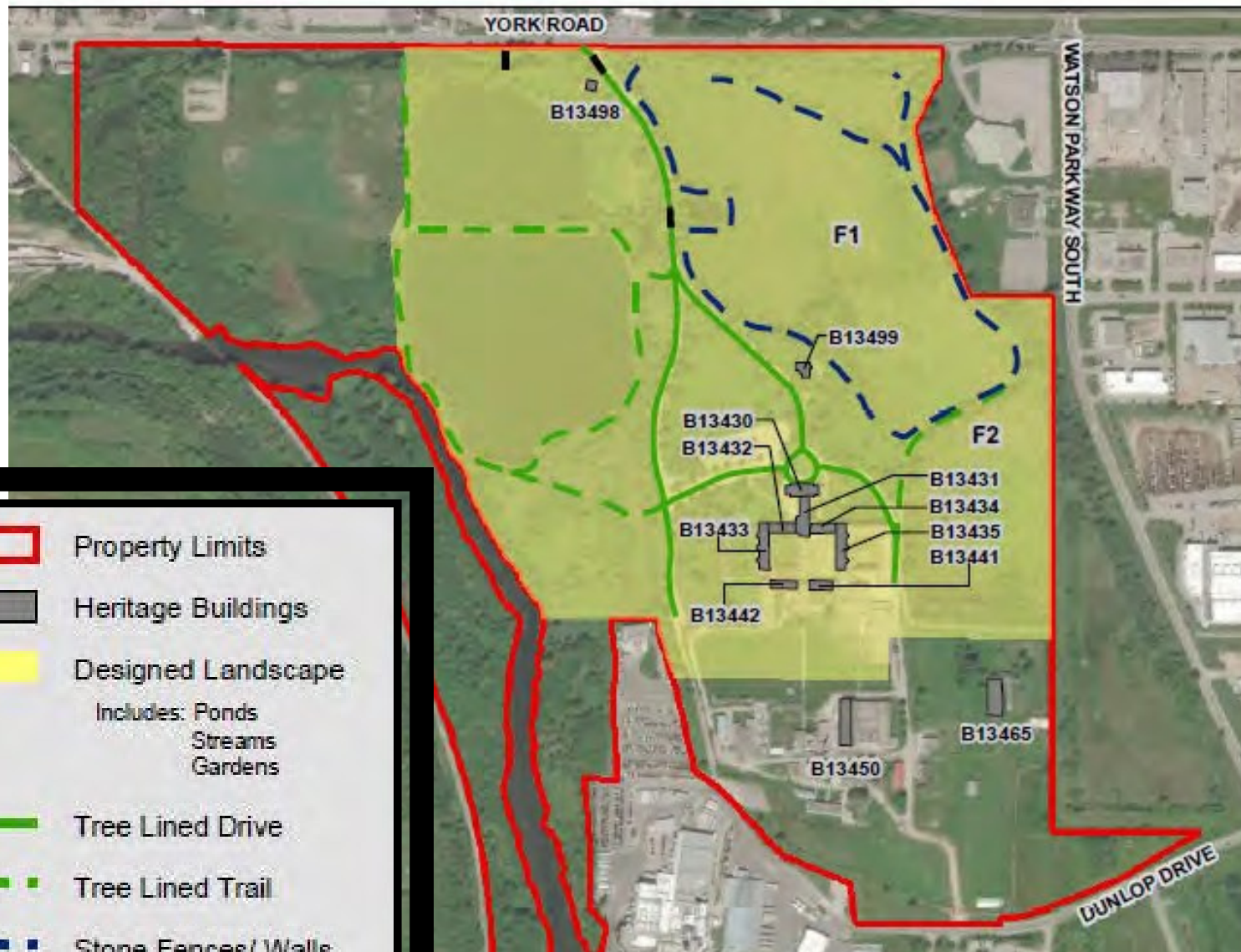
Note: Stormwater management facilities not shown; however, a number of stormwater management facilities will be required to service the GID development lands.

- Legend**
- Land Use Designations**
- Open Space and Park\*\*
  - Glenholme Estate Residential
  - Residential
  - Mixed-use Corridor (GID)
  - Employment Mixed-use 1
  - Employment Mixed-use 2
  - Major Utility\*\*

- Industrial
- Adaptive Re-use
- Service Commercial
- Neighbourhood Commercial Centre
- Significant Natural Areas & Natural Areas
- Natural Areas Overlay

\*\*For transition purposes and related existing land use designations to apply until such time as the GID is fully developed.





- Property Limits
- Heritage Buildings
- Designed Landscape  
Includes: Ponds  
Streams  
Gardens
- Tree Lined Drive
- Tree Lined Trail
- Stone Fences/ Walls
- Bridges

## Identified Heritage Attributes