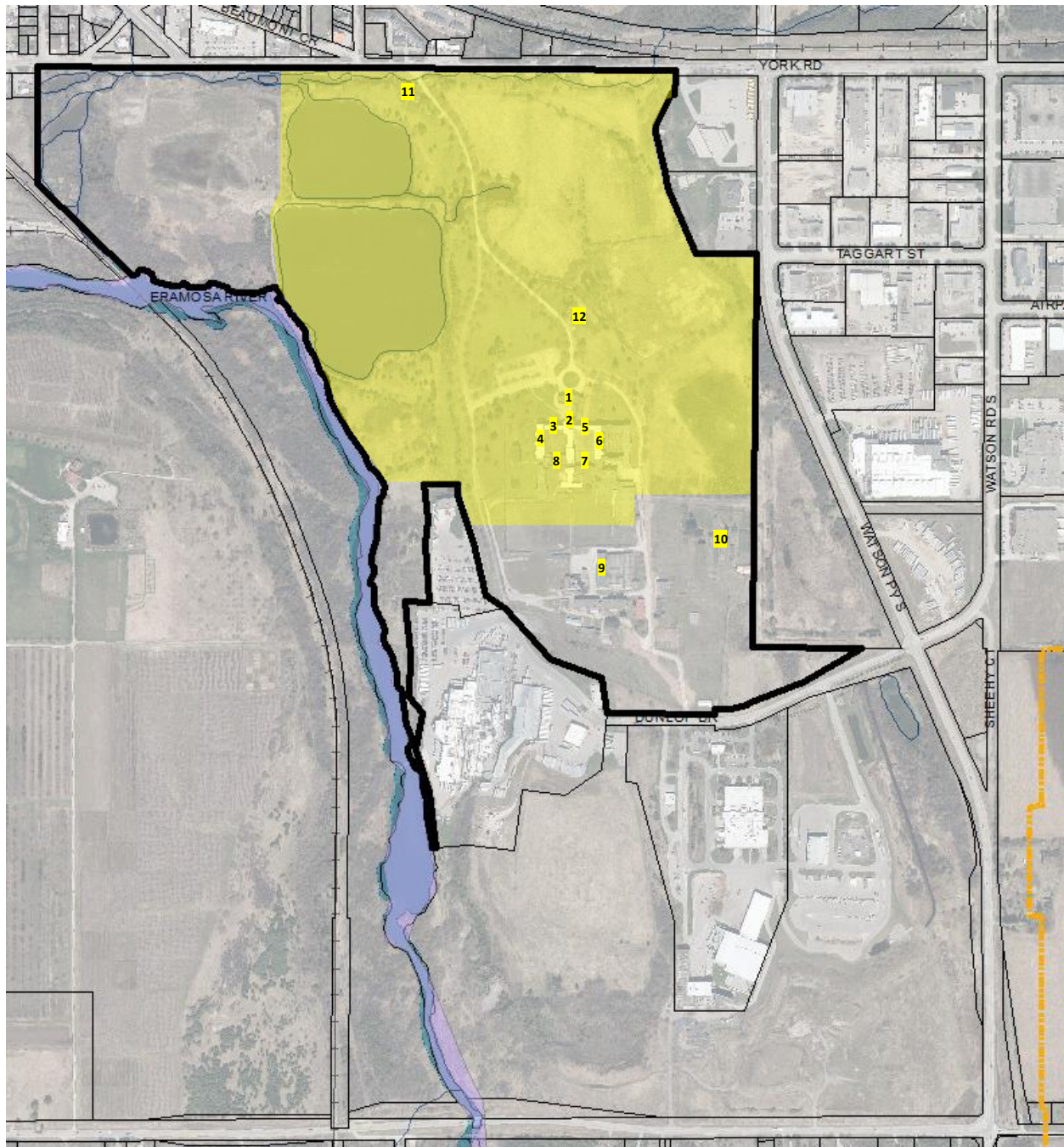


Attachment-5 Primary built heritage resources and cultural heritage landscape within 785 York Road

The primary built heritage resources, numbered on this map, and the cultural heritage landscape of provincial significance, highlighted in yellow, are to be protected by designation.



Attachment-5 (cont'd)



Sentinel stones at small pond with large pond in background; stone field wall with sentinel stone; concrete bridge in driveway over stream; tree-lined driveway with stone field wall; terraced walls and steps around Superintendent's House.

Attachment-5 (cont'd)



Administration Building



Tower; B Cells and T Dormitory



C dormitory and C cells; tower and main corridor; Administration Building

Attachment-5 (cont'd)



Machine Shop; Greenhouse



Willowbank Hall and main entrance bridge; Superintendent's House



Attachment-5 (cont'd)



Administration Building: west fireplace; centre stairway; east fireplace



Main Detention Centre: C cells; B cells; large dining room; cell block stairs



Superintendent's House: study fireplace; wood trim and ceiling in dining room; bedroom fireplace