

Attachment-7 Cultural Heritage Resources Recommended to be listed on the Municipal Register

During the preparation of the GID Secondary Plan, consultation with Heritage Guelph and staff identified potential cultural heritage resources located within the Guelph Innovation District which related to the former Ontario Reformatory. Although some of these potential cultural heritage resources are located within provincially owned land they were not determined by the Province to have Provincial significance. These features were indicated in the GID Secondary Plan - Appendix A in green and labeled as non-listed cultural heritage resources (Attachment-8).

The potential cultural heritage resources labeled A through H below have been determined to have municipal cultural heritage value and recommended to be listed on the Municipal Register of Cultural Heritage Properties. The reformatory quarry area, identified as H, is located on city-owned land at 110 Dunlop Street.

A - Chapel Building

B - Service Tunnel (to

Powerhouse)

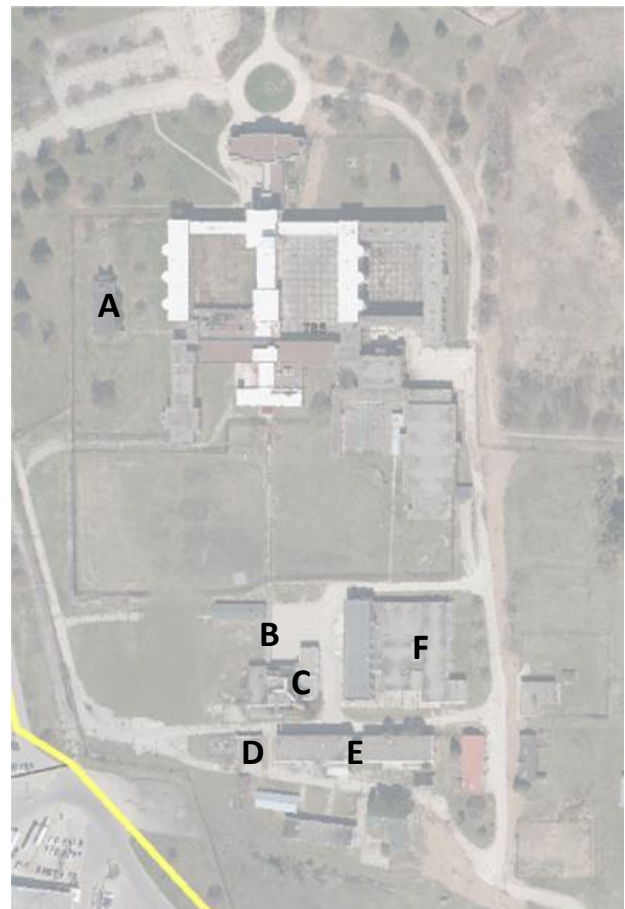
C - Powerhouse and Chimney

Stack

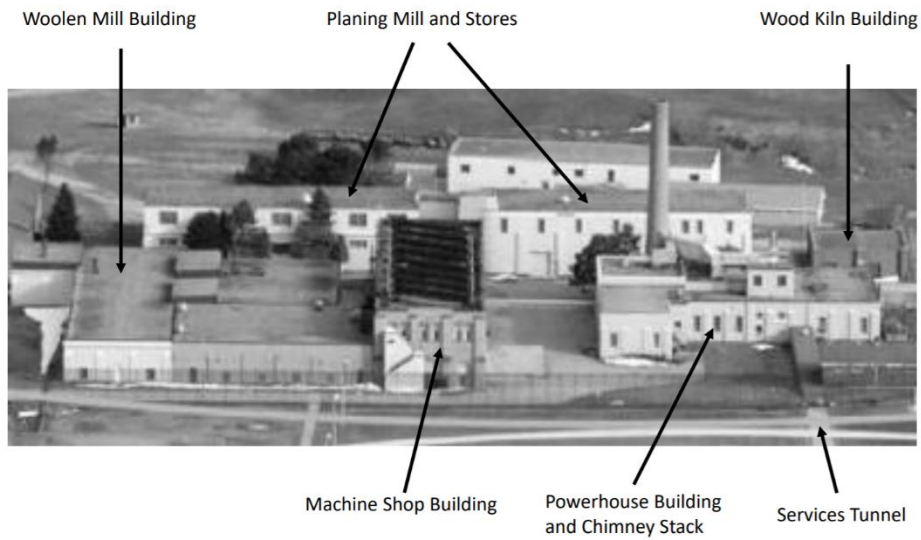
D - Wood Kiln Building

E - Planing Mill and Stores

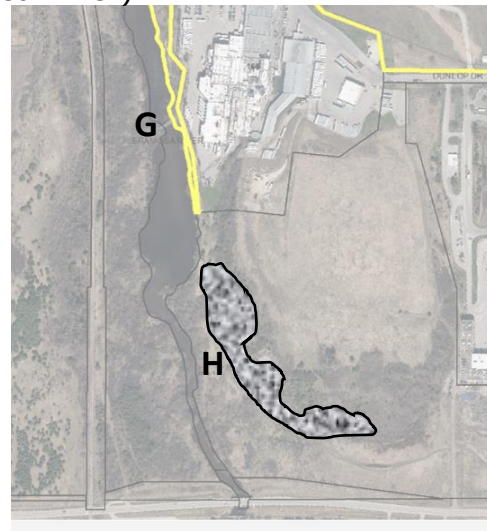
F - Woolen Mill Building



Attachment-7 (continued)



G – Reformatory Railway Bridge (over Eramosa River)



H – Reformatory Quarry Area (part of 110 Dunlop Drive)

