

A Heritage Conservation District is a collection of buildings, streets and open spaces that are of special significance to the community. The individual elements of the district must combine in such a way as to present a sense of cohesiveness.

...

The district can vary in size from one containing only a few buildings to one that encompasses an entire municipality. ... It could be a grouping of architecturally significant buildings, the significance of which may be a result of their workmanship, uniqueness, age, or beauty.

Although the buildings within the area may not be worthy of consideration individually, they could, if protected as a group, provide an important heritage resource of value to the community and the province.

Heritage Guelph recommends that the standard of protection commensurate with the Cultural Heritage Value of the former Ontario Reformatory requires a Part V Designation, a Heritage Conservation District, including but not limited to the structures, features and lands already noted in the 2018 Strategic Conservation Plan.

A Part V Designation should proceed in conjunction with Part IV Designation(s) protecting specific elements referred to in attachment 5 of the Staff presentation.

Moved :

That Heritage Guelph support a Council decision to either:

- a. change the priority of the Ward West HCD study in favour of a Reformatory HCD study, or**
- b. concurrently fund a Reformatory HCD study and a Ward West HCD**

Given the Indigenous history uncovered by the designation working group at the former Ontario Reformatory, that Heritage Guelph recommends meaningful consultation be undertaken with Indigenous communities prior to pursuit of a Part IV or Part V designation.

Entered and filed in the Registry Office for the County of Wellington on the 12th day of December 1868

H. Appleton Esq

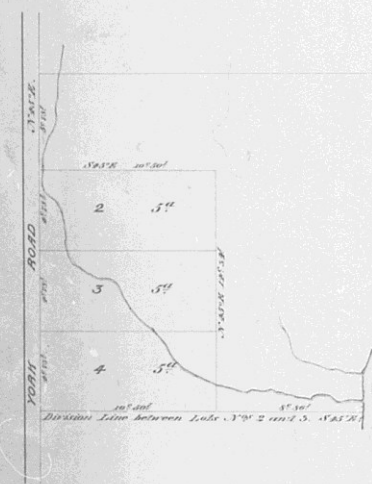
SHEWING ALTERATION IN SURVEY OF
the property known as

THE ROCKS

for
JAMES WEBSTER Esq

Scale four chains to one inch

Drawn by
Wm. L. Chubb
P. L. Surveyor
General



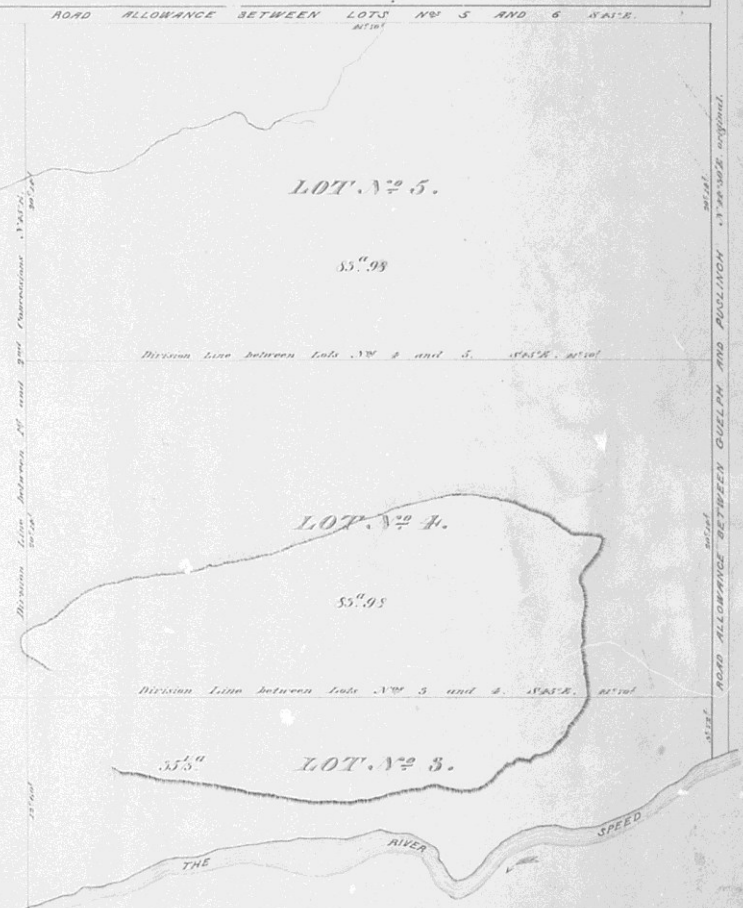
LOT, N^o 3. 09° 22'

BRANCH OF

We James Webster and David Allan do hereby certify this to be a correct amended map of the Survey made for said James Webster, and we request the same to be filed in the Registry Office of the County of Wellington pursuant to Law

Witness our hands
1868

James Webster
David Allan



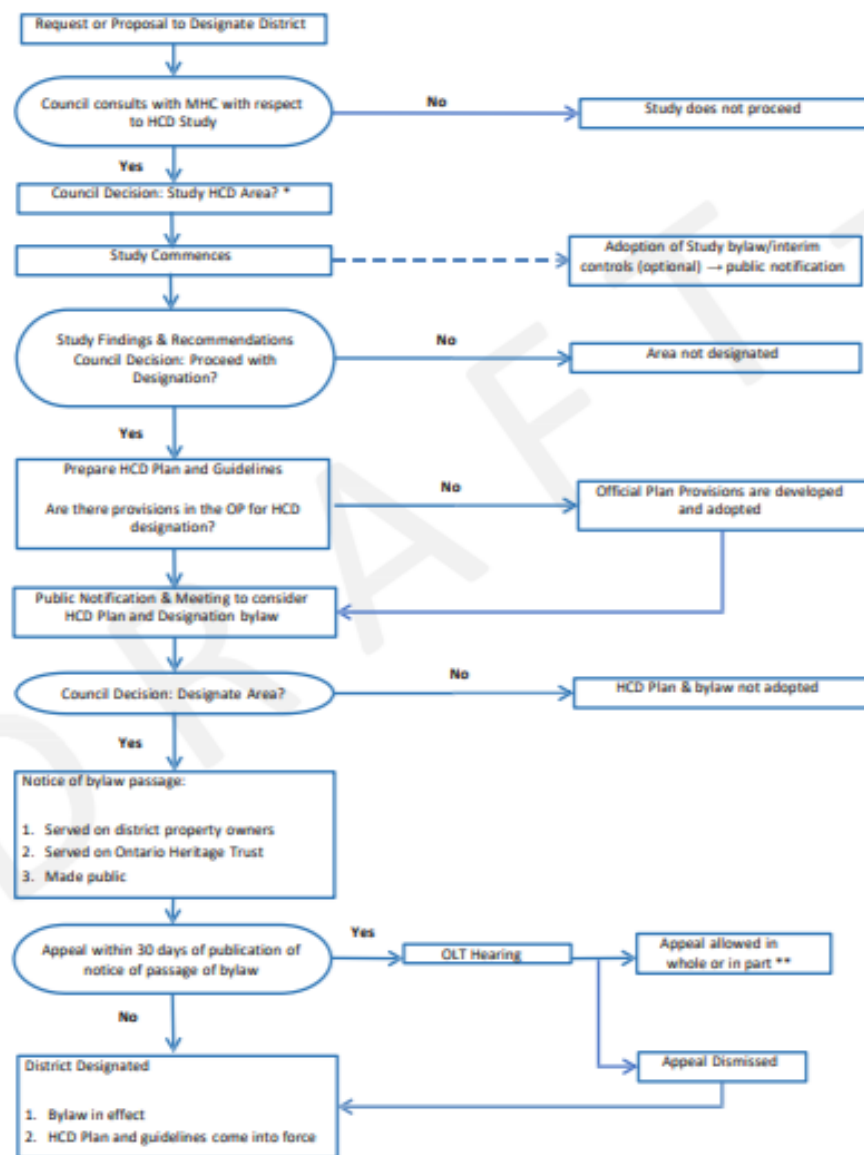
Verdify this to be an amended Map according to provision of the Statute, 12th Vic. Chap 55 Sec 14, of the Survey made by me for James Webster Esq of Lots 2, 3 & 4 of the 1st Con. and Lot 5 of the 2^d Con. Division Co of the Township of Guelph.

That the bearings are obtained from original deeds which may account for the part & run of the 1st Con being parallel by measurement, though of different bearings.

Berlin March 1868

William L. Chubb
P. L. S.

Attest: I have compared the original map with the amended map and find them to be correct.



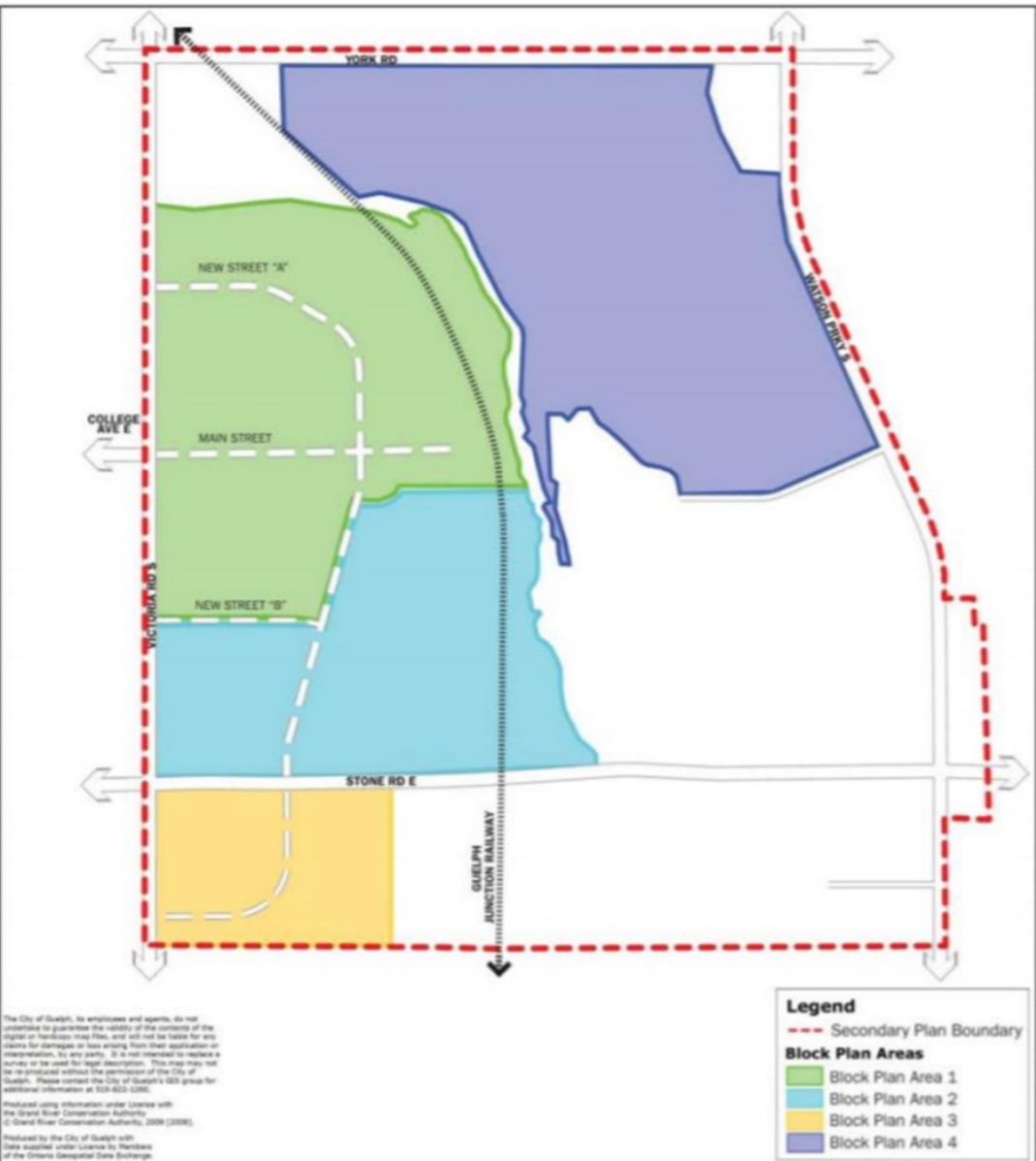
Heritage Conservation District Designation Process

(Sections 40, 40.1, 41, 41.1 of the Ontario Heritage Act)

* The Ontario Heritage Act does not require a study in order to designate a heritage conservation district

** The HCD bylaw may need to be amended for an appeal allowed "in part"

Schedule D: GID Secondary Plan Block Plan Areas



Appendix A: Guelph Innovation District Secondary Plan Heritage

