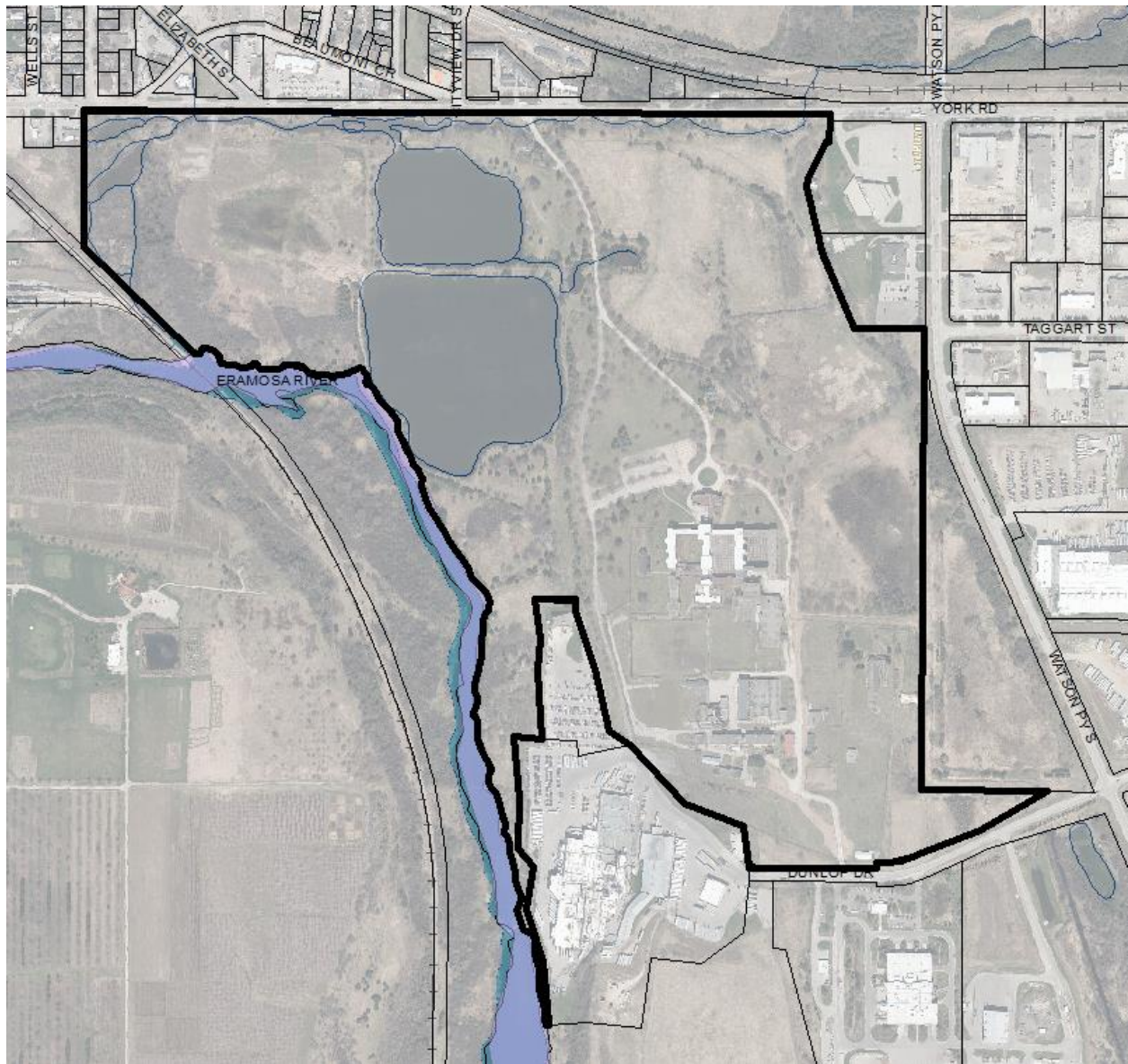


## Attachment-1 Location and Plan of Survey of Subject Property



**785 York Road shown in City of Guelph GIS.**

## Plan of Survey (Registered Plan 61R-21959)

Shows property limits of property currently known as 785 York Road - Lots 1, 2, 3, and 4, Concession 2, Division C and Part Lots 4 and 5, Concession 1, Division C in the City of Guelph. (Survey by Callon Dietz Incorporated, Ontario Land Surveyors, March 2021, provided by Infrastructure Ontario).

The cultural heritage landscape of Provincial significance (Ontario Reformatory CHL) is indicated in yellow and is equal to Parts 7-10, 15-28 and 35 of Registered Plan 61R-21959).

