

1 BASEMENT PLAN - PROPOSED
S-6 3/16" = 1'-0"

Notes:
1. REFER TO DRAWING S-1 FOR GENERAL NOTES

REV	COMMENTS	DATE
3	REVISED FOR METRIC	JUNE 14/21
2	REVISED PER CLIENT	MAY 21/21
1	ISSUED FOR DISCUSSION	MAY 7/21

Project:
NEW REAR ADDITION
223 VICTORIA STREET SOUTH
GUELPH, ONTARIO

Title:
BASEMENT PLAN -
PROPOSED

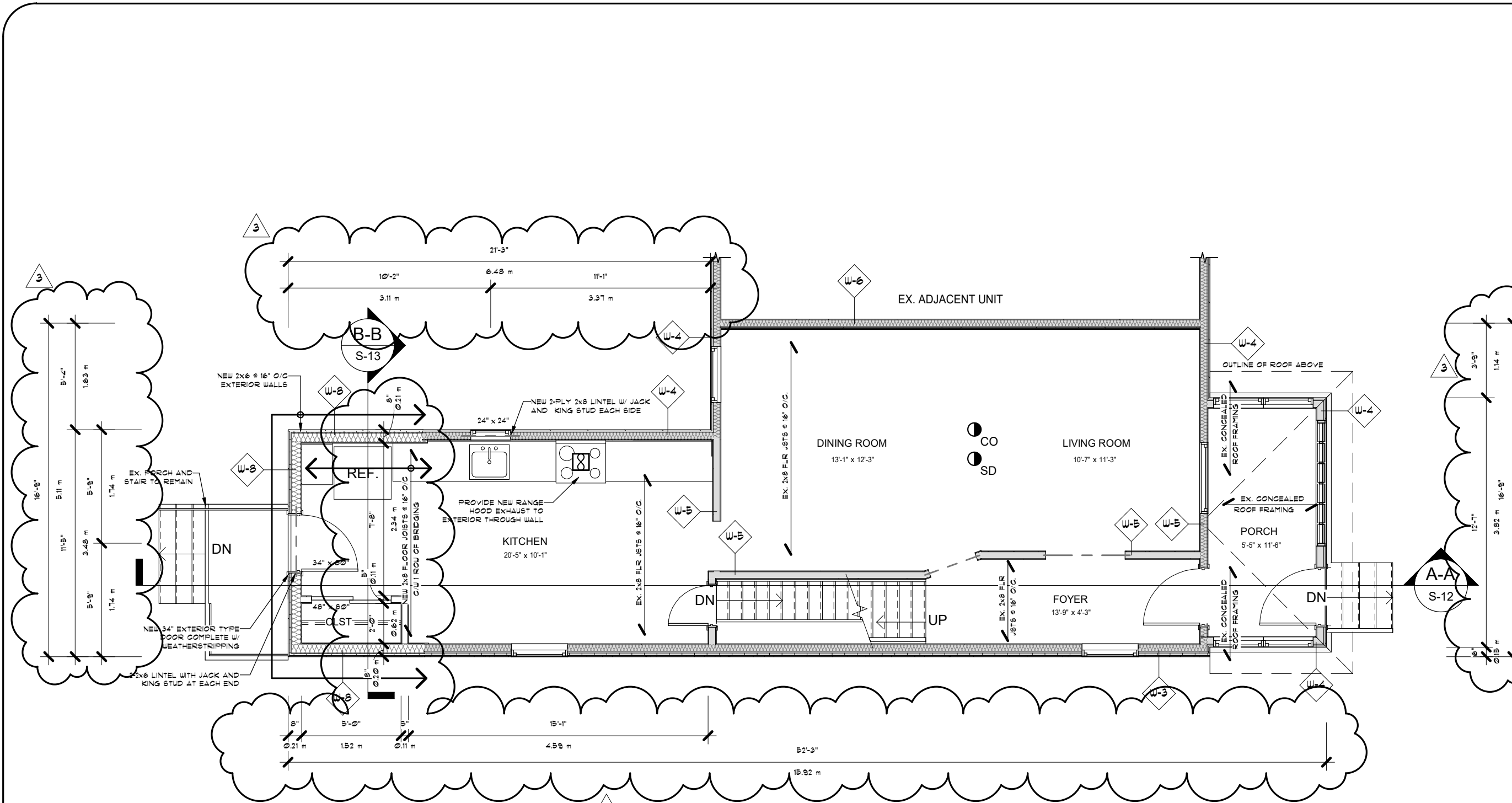


DRAWINGS ARE 'NOT FOR CONSTRUCTION'
UNLESS STAMPED BY AN ENGINEER OR
APPROVED BY A DESIGNER BEARING A
BCIN NUMBER AND SIGNATURE

Date: MAY 7/21
Scale: 3/16" = 1'-0"
Drawn By: M. A. CARROLL
Reviewed By: S.M./ A.K.

Project No:
VICTORIAS223.adj/c-2

Drawing No:
S-6



1 MAIN FLOOR PLAN - PROPOSED
S-7 3/16" = 1'-0"

Notes:
1. REFER TO DRAWING S-1 FOR GENERAL NOTES

REV	COMMENTS	DATE
3	REVISED FOR METRIC	JUNE 14/21
2	REVISED PER CLIENT	MAY 21/21
1	ISSUED FOR DISCUSSION	MAY 7/21

Project:
NEW REAR ADDITION
223 VICTORIA STREET SOUTH
GUELPH, ONTARIO

Title:
MAIN FLOOR PLAN -
PROPOSED

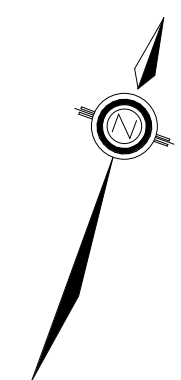


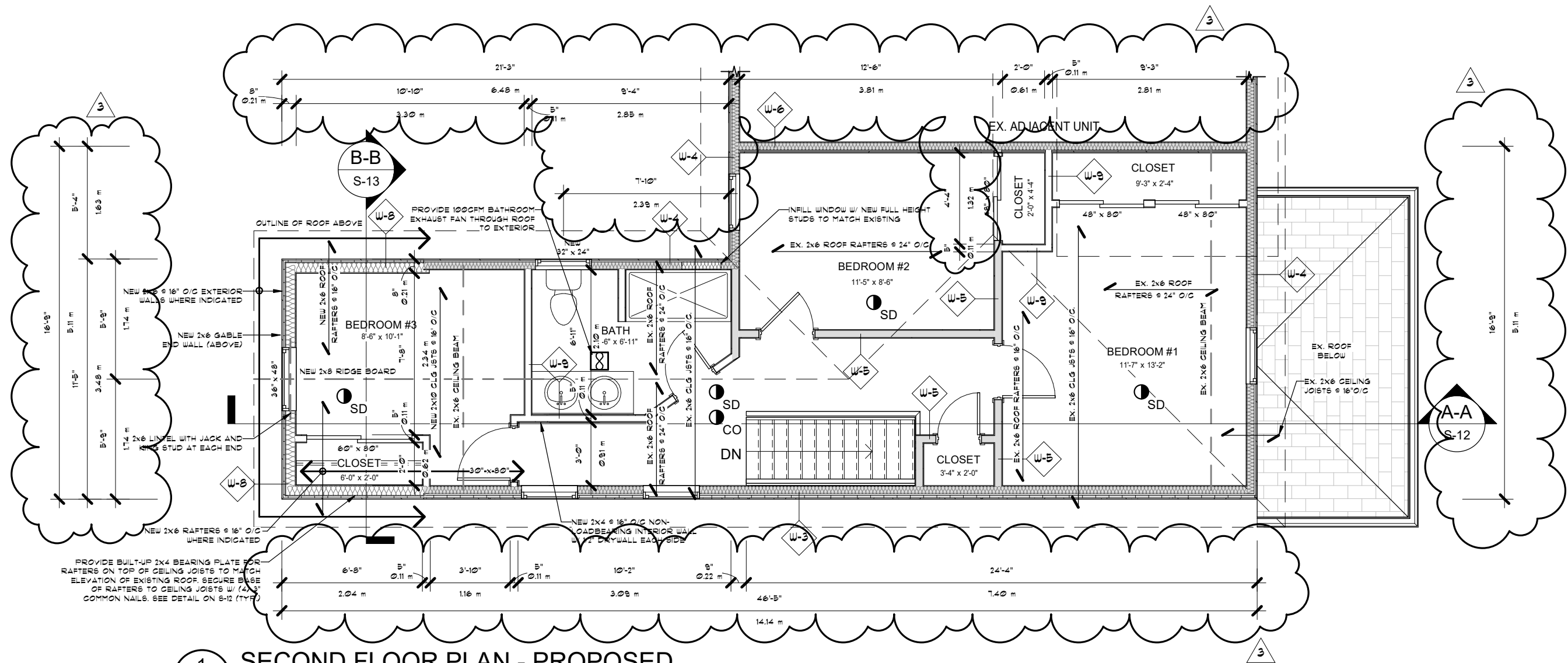
DRAWINGS ARE 'NOT FOR CONSTRUCTION'
UNLESS STAMPED BY AN ENGINEER OR
APPROVED BY A DESIGNER BEARING A
BCIN NUMBER AND SIGNATURE

Date: MAY 7/21
Scale: 3/16" = 1'-0"
Drawn By: M.A. CARROLL
Reviewed By: S.M./ A.K.

Project No:
VICTORIAS223.adj/c-2

Drawing No:
S-7





1 SECOND FLOOR PLAN - PROPOSED
S-8 3/16" = 1'-0"

Notes:
1. REFER TO DRAWING S-1 FOR
GENERAL NOTES

REV	COMMENTS	DATE
3	REVISED FOR METRIC	JUNE 14/21
2	REVISED PER CLIENT	MAY 21/21
1	ISSUED FOR DISCUSSION	MAY 7/21

Project:
NEW REAR ADDITION
223 VICTORIA STREET SOUTH
GUELPH, ONTARIO

Title:
SECOND FLOOR PLAN -
PROPOSED



DRAWINGS ARE NOT FOR CONSTRUCTION
UNLESS STAMPED BY AN ENGINEER OR
APPROVED BY A DESIGNER BEARING A
BCIN NUMBER AND SIGNATURE

Date: MAY 7/21
Scale: 3/16" = 1'-0"
Drawn By: M. A. CARROLL
Reviewed By: S.M./A.K.

Project No:
VICTORIAS223.adj/c-2

Drawing No:
S-8