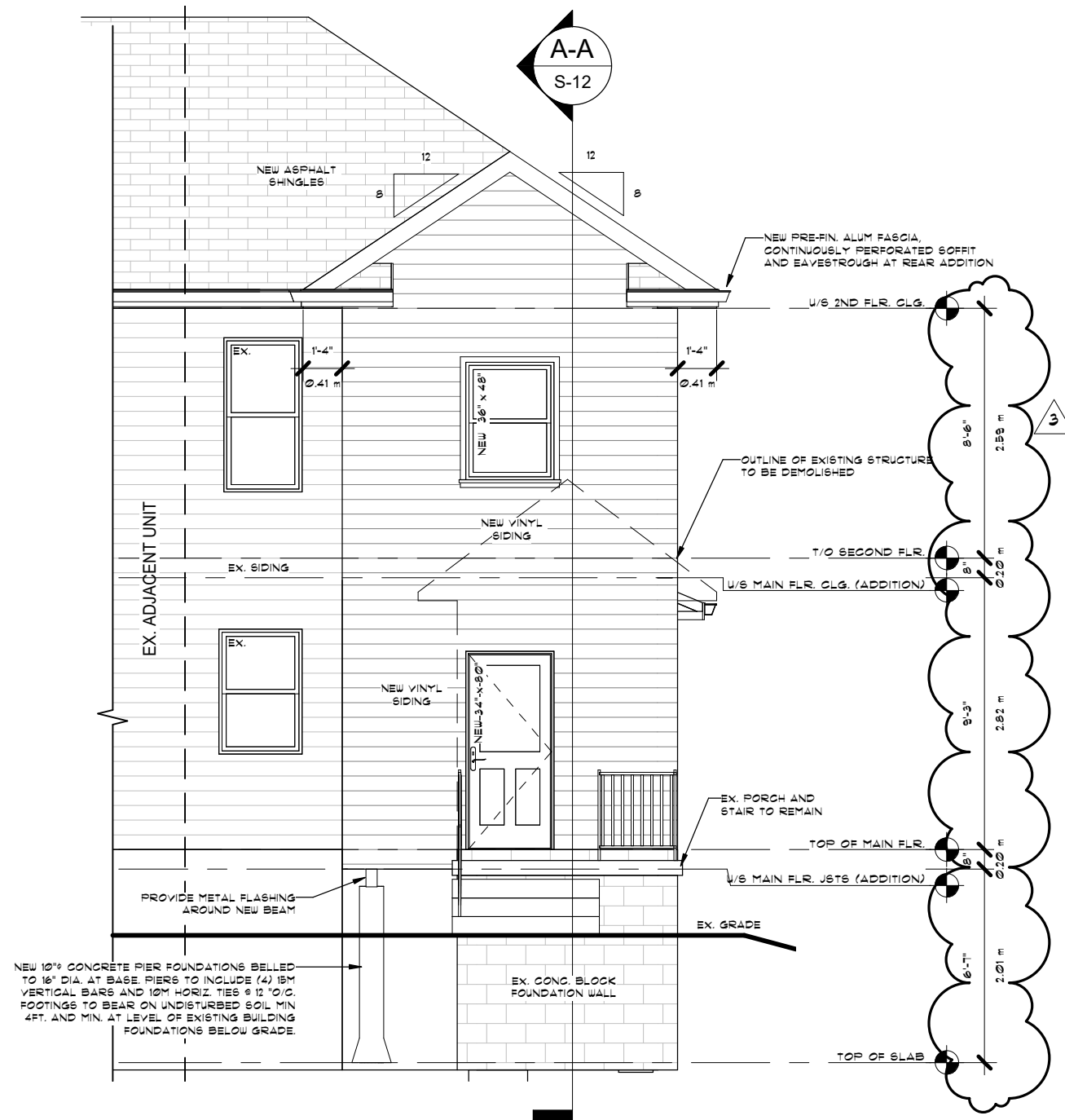


1 EAST ELEVATION  
S-9 3/16" = 1'-0"



2 WEST - ELEVATION  
S-9 3/16" = 1'-0"

Notes:  
1. REFER TO DRAWING S-1 FOR GENERAL NOTES

REV	COMMENTS	DATE
3	REVISED FOR METRIC	JUNE 14/21
2	REVISED PER CLIENT	MAY 21/21
1	ISSUED FOR DISCUSSION	MAY 7/21

Project:  
NEW REAR ADDITION  
223 VICTORIA STREET SOUTH  
GUELPH, ONTARIO

Title:  
EAST & WEST  
ELEVATIONS

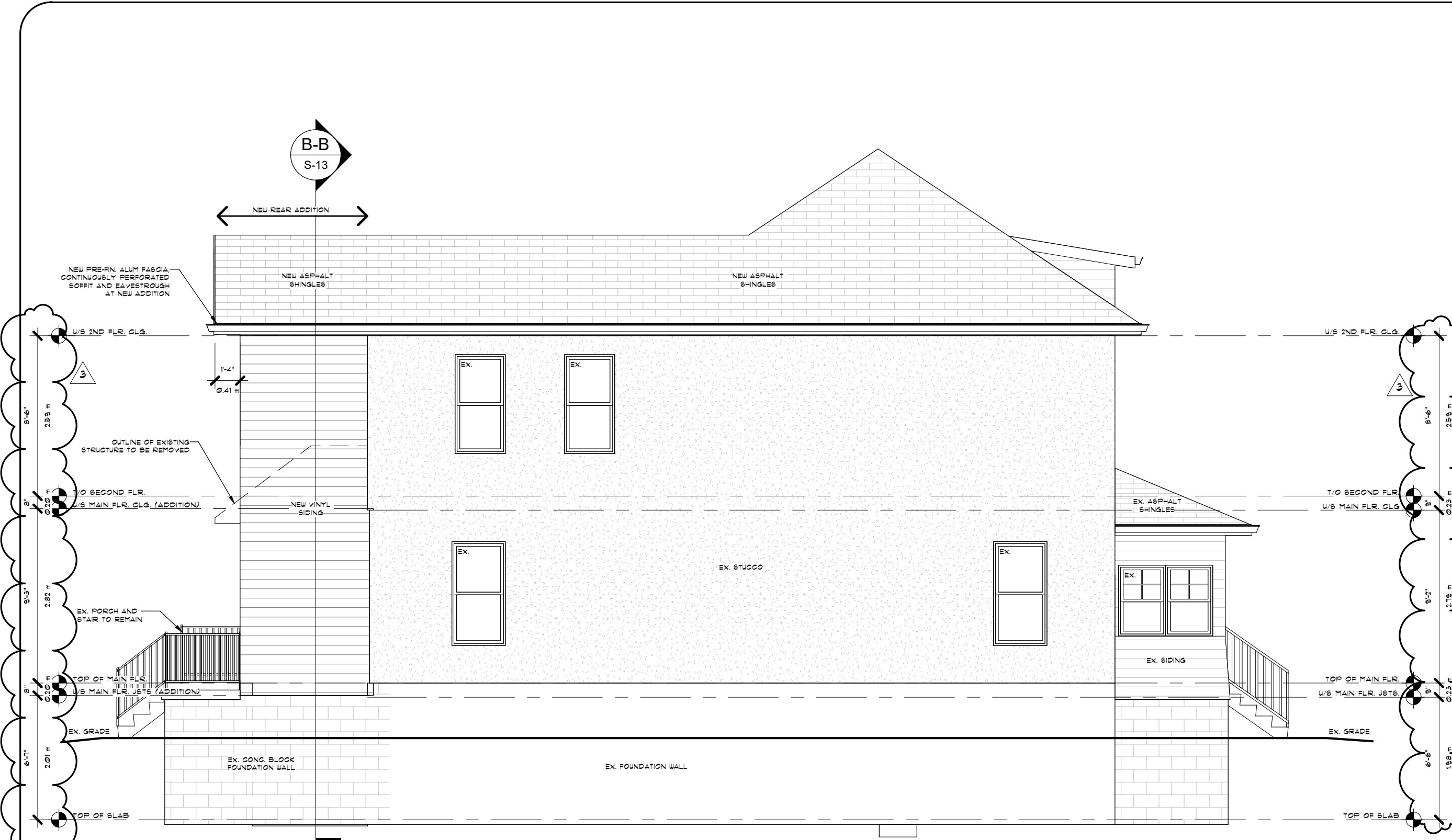


DRAWINGS ARE 'NOT FOR CONSTRUCTION'  
UNLESS STAMPED BY AN ENGINEER OR  
APPROVED BY A DESIGNER BEARING A  
BCIN NUMBER AND SIGNATURE

Date: MAY 7/21  
Scale: 3/16" = 1'-0"  
Drawn By: M. A. CARROLL  
Reviewed By: S.M./ A.K.

Project No:  
VICTORIAS223.adj/c-2

Drawing No:  
S-9



**Notes:**  
1. REFER TO DRAWING S-1 FOR GENERAL NOTES

REV	COMMENTS	DATE
3	REVISED FOR METRIC	JUNE 14/21
2	REVISED PER CLIENT	MAY 21/21
1	ISSUED FOR DISCUSSION	MAY 7/21

**Project:**  
NEW REAR ADDITION  
223 VICTORIA STREET SOUTH  
GUELPH, ONTARIO

**Title:**  
SOUTH ELEVATION

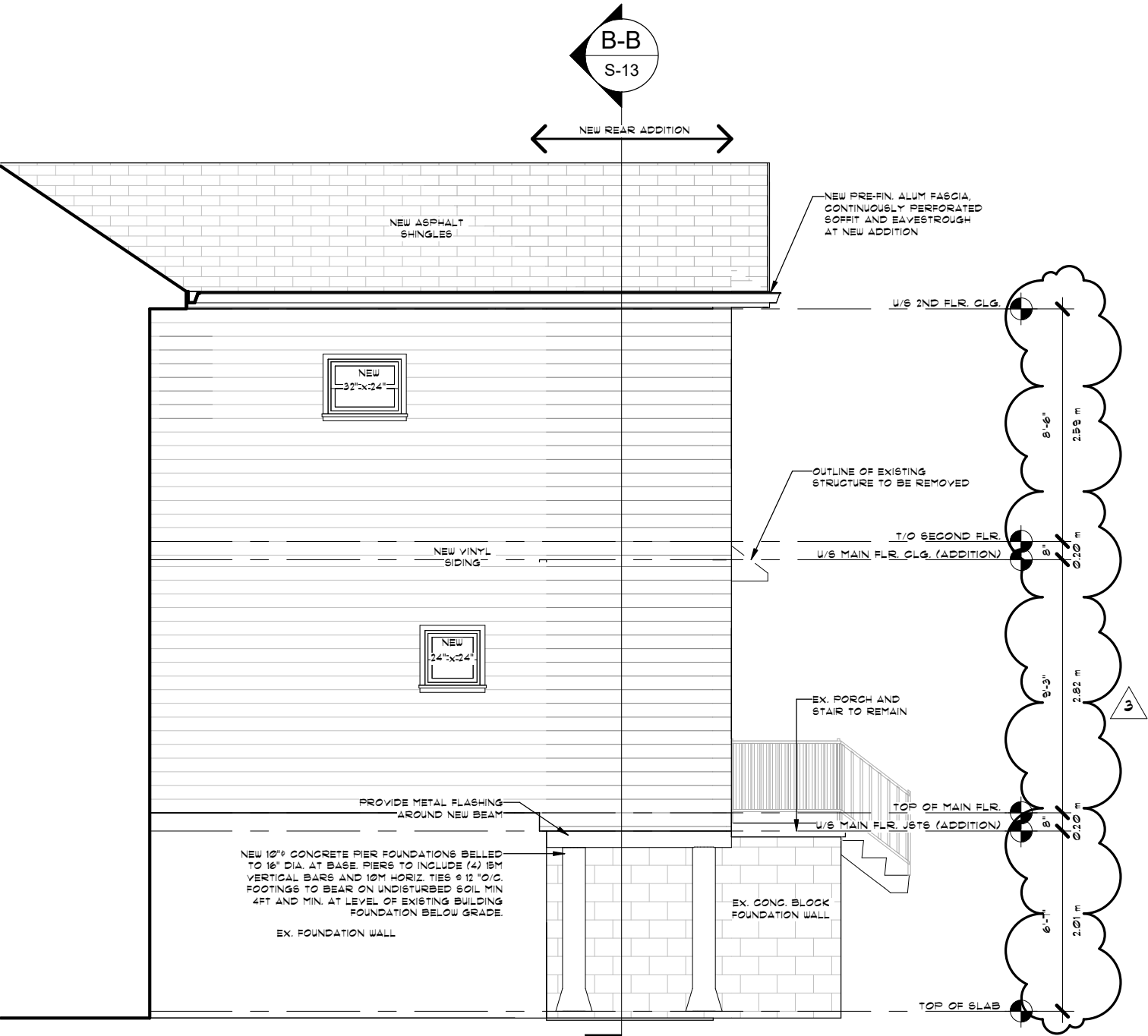


DRAWINGS ARE 'NOT FOR CONSTRUCTION'  
UNLESS STAMPED BY AN ENGINEER OR  
APPROVED BY A DESIGNER BEARING A  
BCIN NUMBER AND SIGNATURE

**Date:** MAY 7/21  
**Scale:** 3/16" = 1'-0"  
**Drawn By:** M. A. CARROLL  
**Reviewed By:** S.M./ A.K.

**Project No:**  
VICTORIAS223.adj/c-2

**Drawing No:**  
S-10



1 PARTIAL NORTH ELEVATION  
S-11 3/16" = 1'-0"

Notes:  
1. REFER TO DRAWING S-1 FOR  
GENERAL NOTES

REV	COMMENTS	DATE
3	REVISED FOR METRIC	JUNE 14/21
2	REVISED PER CLIENT	MAY 21/21
1	ISSUED FOR DISCUSSION	MAY 7/21

Project:  
NEW REAR ADDITION  
223 VICTORIA STREET SOUTH  
GUELPH, ONTARIO

Title:  
PARTIAL NORTH  
ELEVATION



DRAWINGS ARE 'NOT FOR CONSTRUCTION'  
UNLESS STAMPED BY AN ENGINEER OR  
APPROVED BY A DESIGNER BEARING A  
BCIN NUMBER AND SIGNATURE

Date: MAY 7/21  
Scale: 3/16" = 1'-0"  
Drawn By: M. A. CARROLL  
Reviewed By: S.M./ A.K.

Project No:  
VICTORIAS223.adj/c-2

Drawing No:  
S-11

Notes:  
1. REFER TO DRAWING S-1 FOR  
GENERAL NOTES

REV	COMMENTS	DATE
3	REVISED FOR METRIC	JUNE 14/21
2	REVISED PER CLIENT	MAY 21/21
1	ISSUED FOR DISCUSSION	MAY 7/21

Project:  
NEW REAR ADDITION

223 VICTORIA STREET SOUTH  
GUELPH, ONTARIO

Title:  
BUILDING SECTION A-A



DRAWINGS ARE NOT FOR CONSTRUCTION  
UNLESS STAMPED BY AN ENGINEER OR  
APPROVED BY A DESIGNER BEARING A  
BCIN NUMBER AND SIGNATURE

Date: MAY 7/21  
Scale: 3/16" = 1'-0"  
Drawn By: M. A. CARROLL  
Reviewed By: S.M./ A.K.

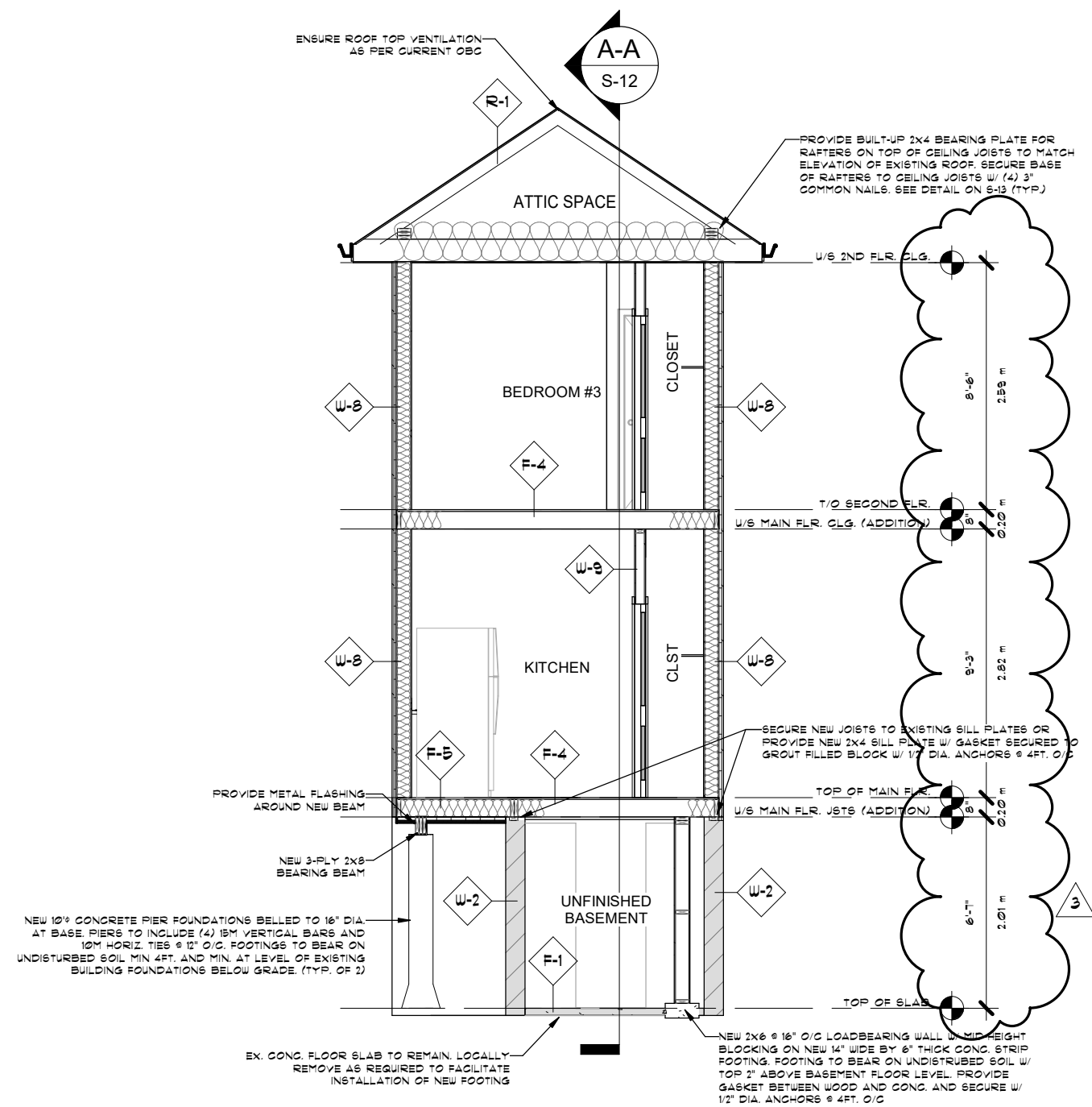
Project No:  
VICTORIAS223.adj/c-2

Drawing No:  
S-12

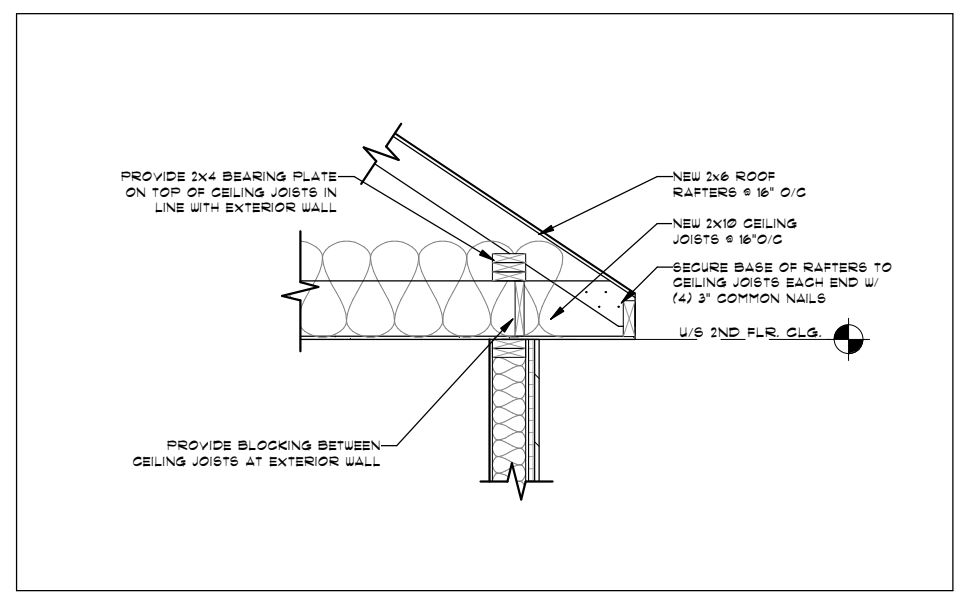


A-A BUILDING SECTION A-A  
S-12 3/16" = 1'-0"

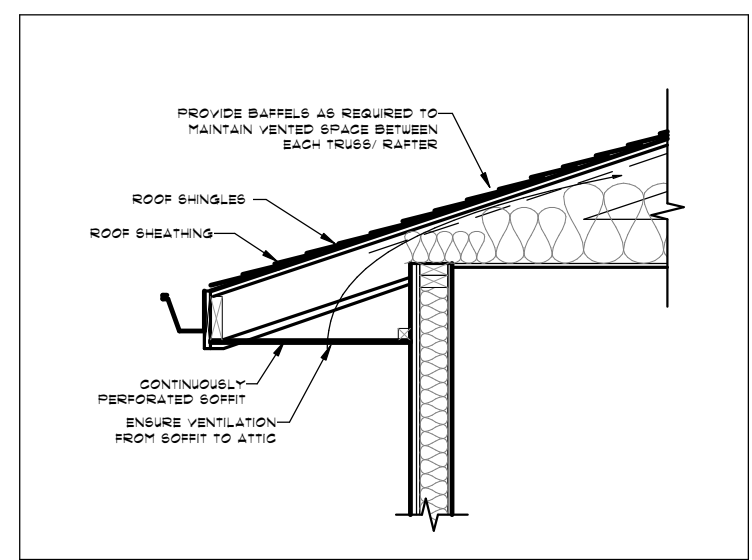




**B-B BUILDING SECTION B-B**  
S-13 3/16" = 1'-0"



**1 TYPICAL RAFTER CONNECTION DETAIL**  
S-13 3/8" = 1'-0"



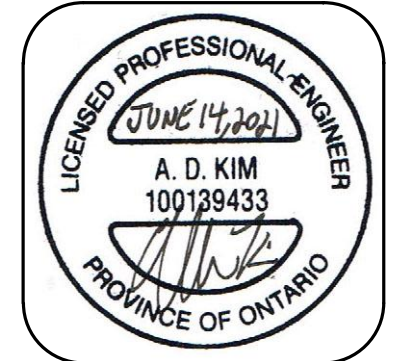
**2 TYPICAL SOFFIT VENTILATION DETAIL**  
S-13 1/2" = 1'-0"

**Notes:**  
1. REFER TO DRAWING S-1 FOR GENERAL NOTES

REV	COMMENTS	DATE
3	REVISED FOR METRIC	JUNE 14/21
2	REVISED PER CLIENT	MAY 21/21
1	ISSUED FOR DISCUSSION	MAY 7/21

**Project:**  
NEW REAR ADDITION  
223 VICTORIA STREET SOUTH  
GUELPH, ONTARIO

**Title:**  
BUILDING SECTION B-B



DRAWINGS ARE 'NOT FOR CONSTRUCTION' UNLESS STAMPED BY AN ENGINEER OR APPROVED BY A DESIGNER BEARING A BCIN NUMBER AND SIGNATURE

**Date:** MAY 7/21  
**Scale:** As indicated  
**Drawn By:** M. A. CARROLL  
**Reviewed By:** S.M./ A.K.

**Project No:**  
VICTORIAS223.adj/c-2

**Drawing No:**  
S-13