

## Attachment 2 - Sign Variance Drawings (Provided by the Applicant)

Proposed non-illuminated building sign with an area of 5.1m<sup>2</sup> to be located on the east side of the second storey of the building (Sign A).



**SUITES AT  
ROYAL CITY PARK**  
ACTIVE SENIORS LIVING

Proposed non-illuminated building sign with an area of 8.24m<sup>2</sup> to be located on the east side of the second storey of the building (Sign B).



Proposed non-illuminated building sign with an area of 5.15m<sup>2</sup> to be located on the south side of the fourth storey of the building (Sign C).



**SURREY STREET  
MEDICAL CENTRE**

Proposed non-illuminated building sign with an area of 4.01m<sup>2</sup> to be located on the south side of the fourth storey of the building (Sign D).



Proposed non-illuminated building sign with an area of 3m<sup>2</sup> to be located on the south side of the second storey of the building (Sign E).  
Overall view of the west side of the building.



# Locations on the building

## East side

FACING PARKING LOT  
overall size of this side of building is  
11.65m x 48.76m (568 sq m)

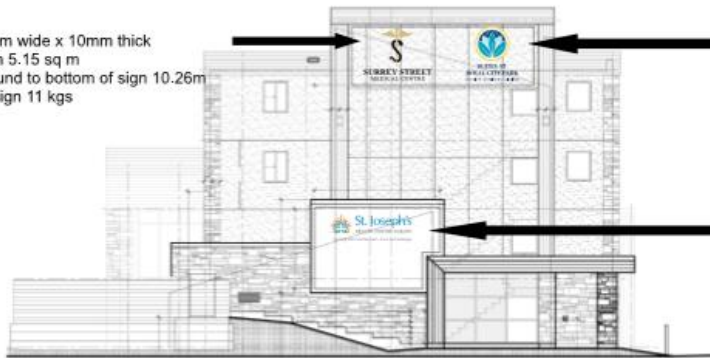


- Sign A
- 2.29m high x 2.23m wide x 10mm thick
  - overall size of sign 5.10 sq m
  - distance from ground to bottom of sign 3.5m
  - overall weight of sign 12 kgs
  - non illuminated

- Sign B
- 2.18m high x 3.78m wide x 10mm thick
  - overall size of sign 8.24 sq m
  - distance from ground to bottom of sign 2.69m
  - overall weight of sign 13 kgs
  - non illuminated

## South side (facing Wellington Street West)

- Sign C
- 2.03m high x 2.54m wide x 10mm thick
  - overall size of sign 5.15 sq m
  - distance from ground to bottom of sign 10.26m
  - overall weight of sign 11 kgs
  - non illuminated



- Sign D
- 2.03m high x 1.98m wide x 10mm thick
  - overall size of sign 4.01 sq m
  - distance from ground to bottom of sign 3.5m
  - overall weight of sign 11 kgs
  - non illuminated

- Sign E
- 0.99m high x 3.04m wide x 10mm thick
  - overall size of sign 3 sq m
  - distance from ground to bottom of sign 4.31m
  - overall weight of sign 10 kgs
  - non illuminated