

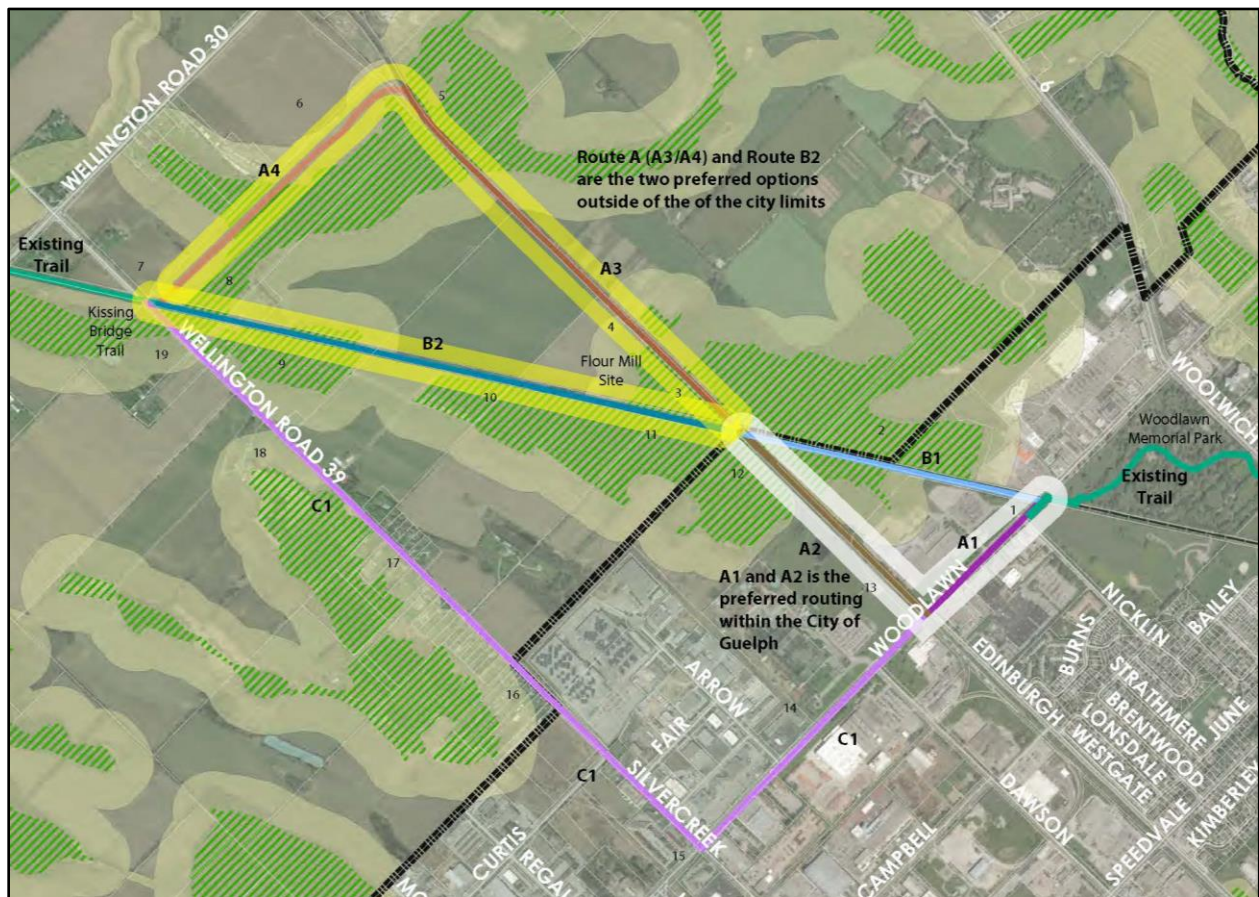
Attachment-5: Trans Canada Trail Update

As part of the Guelph Trail Master Plan update, a route investigation was completed to identify route options to fill a three kilometre gap in the Trans Canada Trail (TCT) between Guelph and Guelph-Eramosa Township. The trail extension would link Guelph to a network of trails across Ontario by connecting an existing multi-use path along Woodlawn Road to the Kissing Bridge Trail in Guelph-Eramosa, which currently ends at Wellington Road 39 (Silvercreek Parkway).

The connection has a complicated history of property ownership, environmental, technical and financial challenges. There is a community desire to connect the gap through an off-road route using existing rail and hydro corridors instead of an on-road route. The potential routes would require partnerships and/or agreements with Wellington County, Guelph-Eramosa Township, Grand River Conservation Authority (GRCA), Guelph Junction Railway, Hydro One Networks Inc., Infrastructure Ontario, Woodlawn Memorial Park, and the City of Guelph.

The following image illustrates three potential routes that were derived from the route investigation.

Figure 1: TCT Route Options



As an exercise outside of the Guelph Trail Master Plan update, staff are investigating the feasibility of the off-road routes. Staff have reached out to agencies and land owners for their feedback on the potential routes and recently submitted an application to Hydro One to obtain feedback on the trail routes that would traverse their lands and to confirm whether or not a Provincial Secondary Land Use Program license for a trail can technically be granted where there is an existing easement in favour of a third party. Feedback received from all stakeholders will be evaluated together with other decision-making criteria to form a future recommendation to Council on the TCT route.