


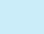

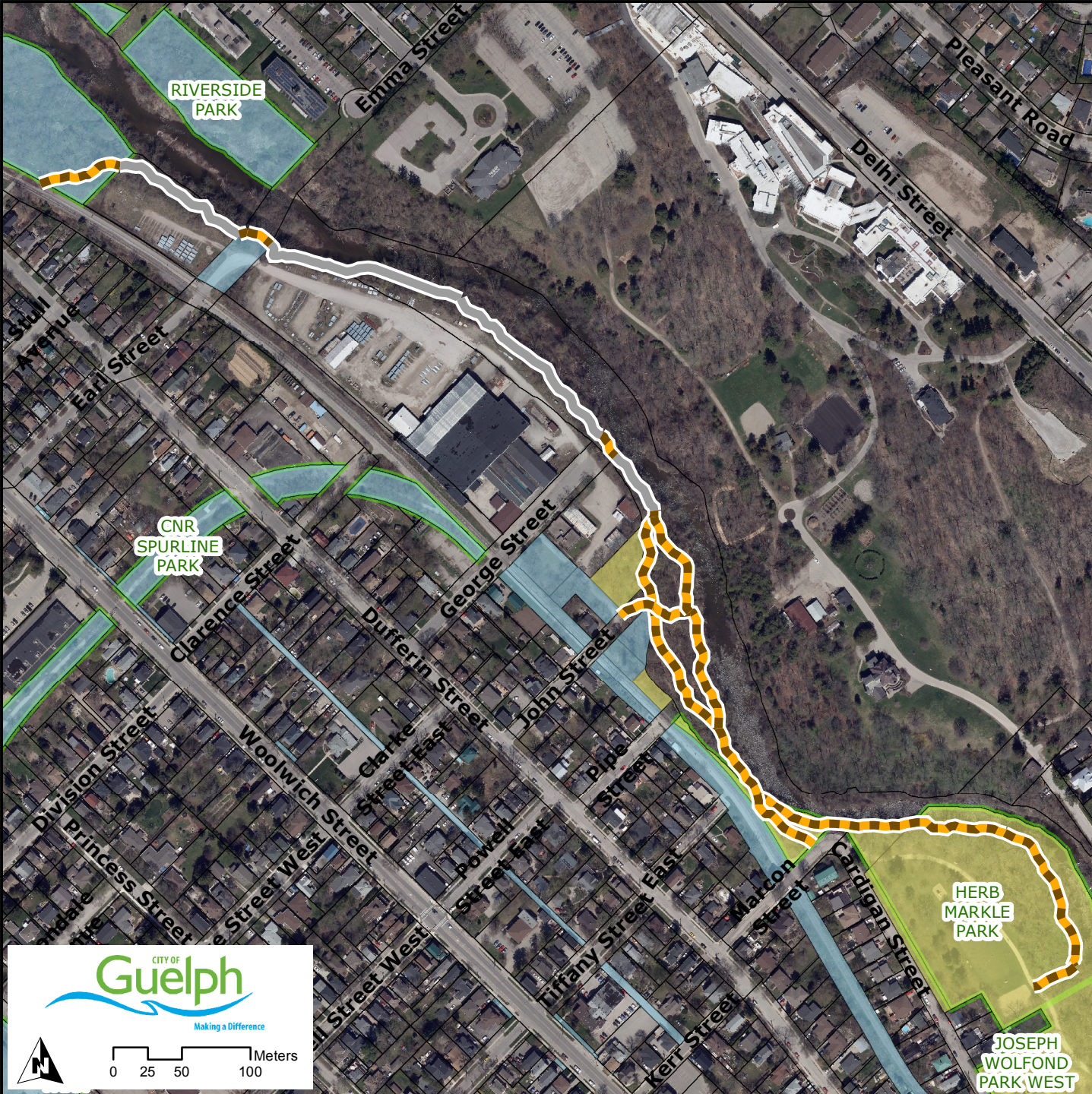
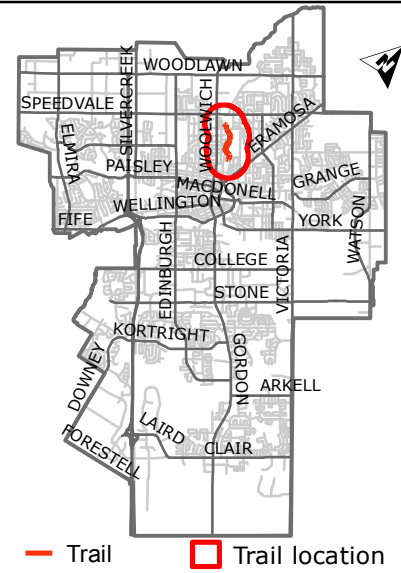


# City of Guelph & GHTC trail maintenance agreement

## Rapids Side Trail

-  Currently managed by GHTC
-  Proposed to be managed by GHTC
-  Park Boundary
- Parcel ownership**
-  City of Guelph
-  GRCA

Total trail length = **1.5km**  
 Managed by GHTC = 0.5km  
 Proposed addition = 1km



**CITY OF Guelph**  
 Making a Difference

Scale: 0, 25, 50, 100 Meters