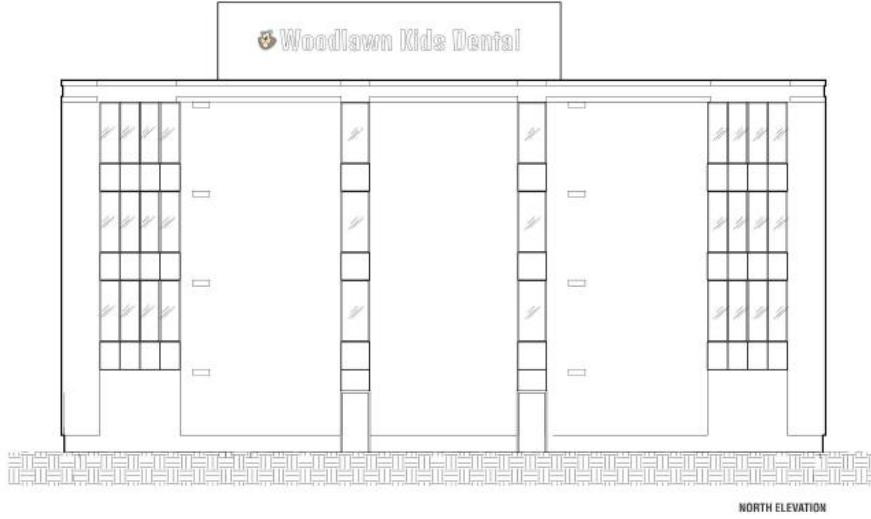


# Attachment 2- Sign Variance Drawings

Sign Installation Guide  
Scale: 3/32" = 1'-0"



NORTH ELEVATION



9 Woodlawn Road East,  
Guelph, ON

D. Puterman Dentistry  
Professional Corp.

DRAWN BY: B. Guss  
DATE: July 14, 2021

Drawing No.  
**DPDP-SPN1H1GS.000B1**

Electrical Requirements

120v

STRUCTURAL REFERENCE

SITE CHECK REQUIRED

VICTIM ART REQUIRED

COLORS REQUIRED

July 15, 2021 6:35 AM

B. Guss

REVISED SIGNAGE

July 15, 2021 1:45 PM

B. Guss

REVISED SIGNAGE

September 23, 2021 4:45 PM

B. Guss

REVISED SIGNAGE

Preliminary Approval

Approved by Producer

Non-Illuminated Reverse Channel Letters  
Scale: 1/4" = 1'-0"

Sign Area  
7.10m<sup>2</sup>



MATERIAL SPECIFICATIONS

- Aluminum routed graphics and 2" return painted White
- \*Digitally printed graphics direct to 1st surface for beaver graphics



SIDE ELEVATION



9 Woodlawn Road East,  
Guelph, ON

D. Puterman Dentistry  
Professional Corp.

DRAWN BY: B. Guss  
DATE: September 23, 2021

Drawing No.  
**DPDP-RCN1H1GS.000A1**

Electrical Requirements

CHANNEL LETTERS

PL: 40.2 m PA: 2.42 m<sup>2</sup>

SITE CHECK REQUIRED

VICTIM ART REQUIRED

COLORS REQUIRED

Preliminary Approval

Approved by Producer