

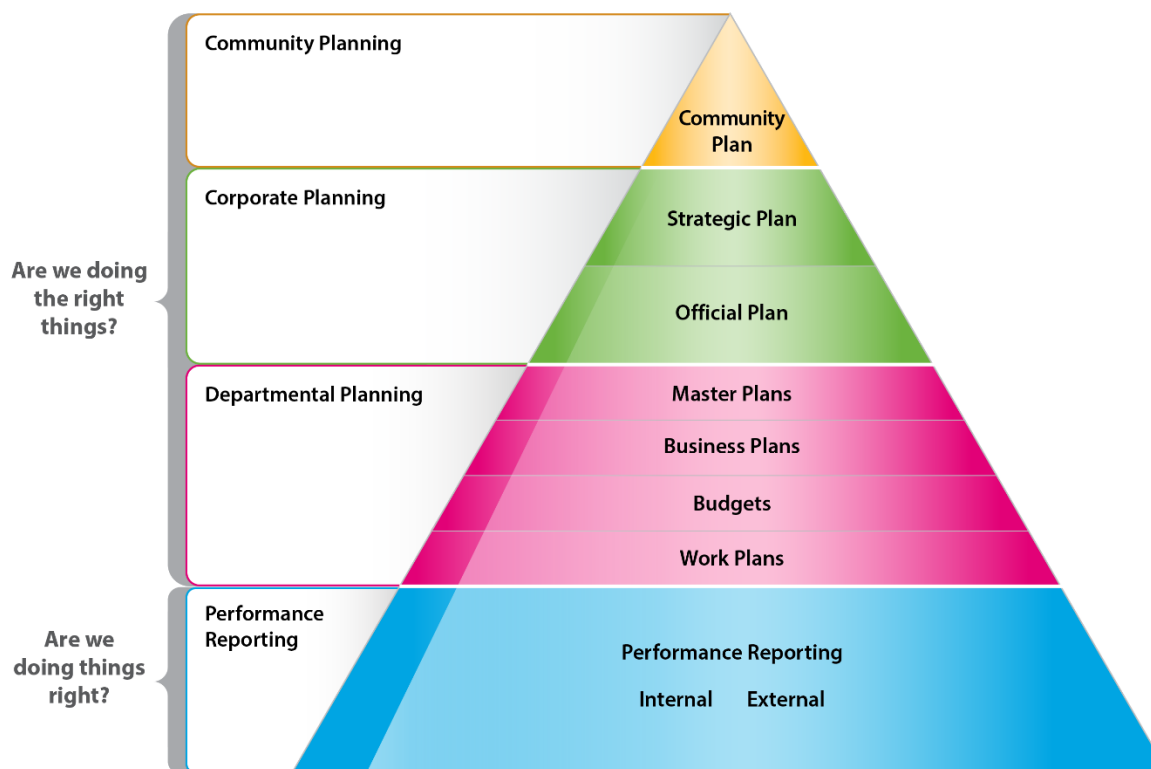
Solid Waste Management Master Plan

Jennifer Rose, B.Sc.; M.A

GM, Environmental Services

April 4, 2022

Master Plan Alignment to Strategic Plan



Environmental Services Mandate



Strategic Plan Alignment

Sustaining our Future: An environment that sustains us

Entrusted stewards and passionate water, wastewater and solid waste professionals delivering reliable services to our progressive community, while sustaining our finite resources for future generations, with care for the natural environment

Master Plan Themes

Focus on waste as a resource

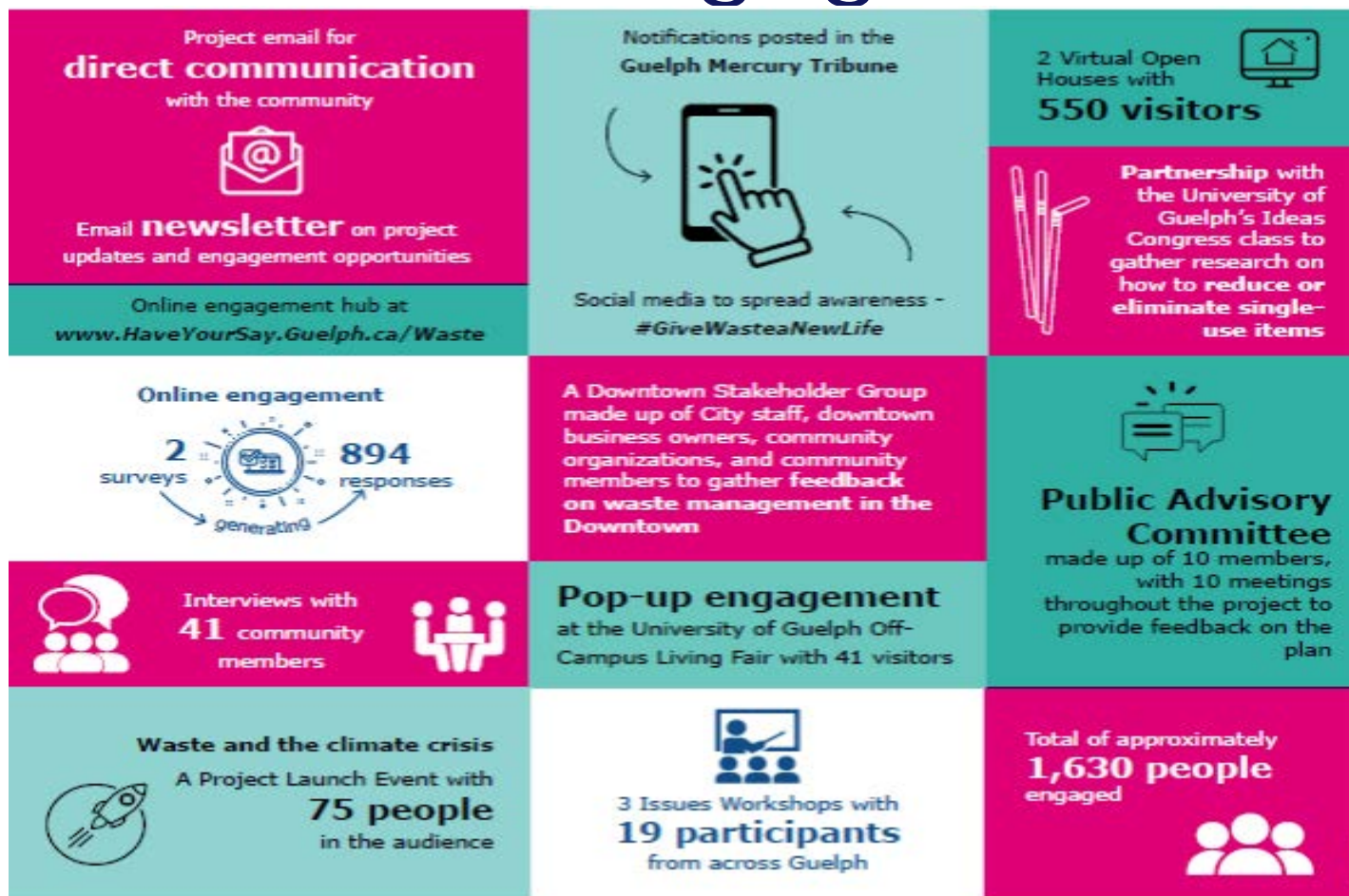
Continue diverting waste from landfill through implementation of new solid waste programs

Single Use Items reduction and bans

Funding models and service level impacts to support service rationalization

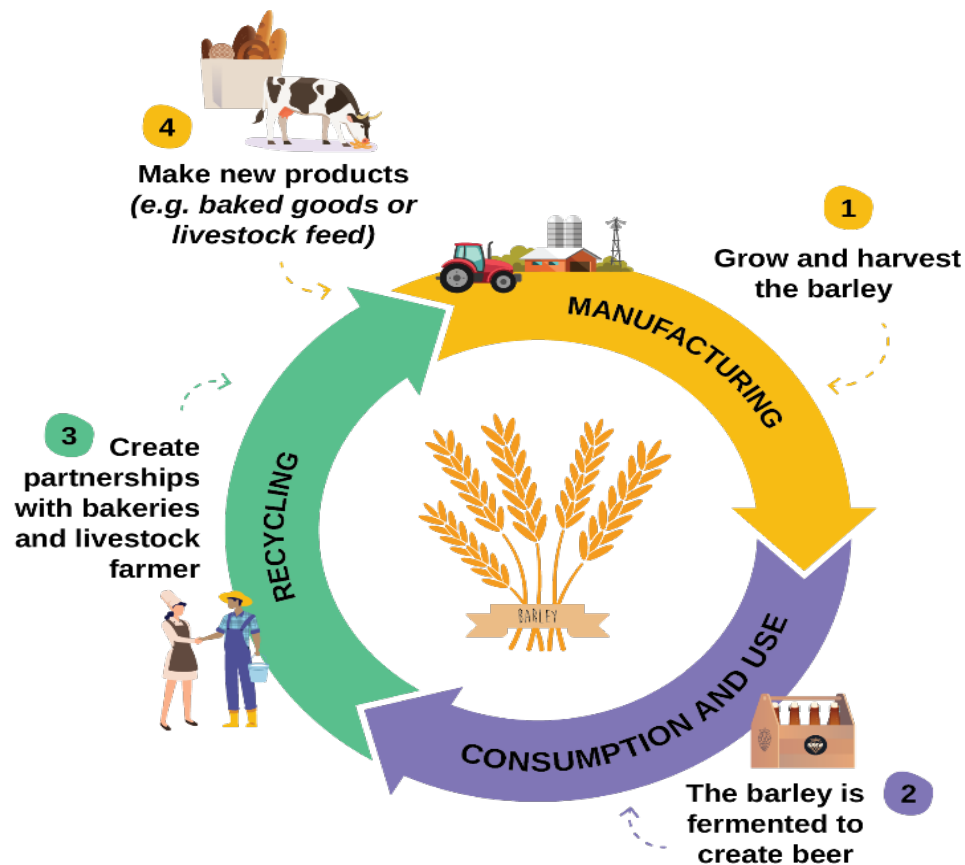
Blue Box transition implications to operations and services

Stakeholder Engagement



Recommendations

Circular Economy: Future of the Solid Waste Industry



“Ontario is running out of landfill space. Will it embrace the circular economy or sleepwalk into a crisis?” *Globe and Mail*, March 6, 2022

Single Use Items – 2 phases

Phase 1 – March 2023

- Ban the most problematic materials
 - Plastic shopping bags
 - Polystyrene take out containers and cups
 - Plastic straws

Phase 2 – March 2024

- Fees for:
 - Reusable bags - \$1
 - Fees for disposable cups - 25 cents

Concerns from Engagement

Accessibility

- **Concern:** the need for some people to use plastic straws
 - The by-law asks businesses to stock flexible plastic straws for those who ask for them

Affordability

- **Concern:** reusable bags and fees for disposable cups
 - Work with organizations to provide reusable bags for those who need them
 - Exemptions in the by-law for fees for disposable cups

IC&I – Clear Eligibility Requirements

Introduce eligibility requirements:

- Only pick up from businesses and institutions which:
 - are on a collection route and have a residential component
 - follow the 3-stream separation of waste
 - waste fits into our carts along with the residential waste

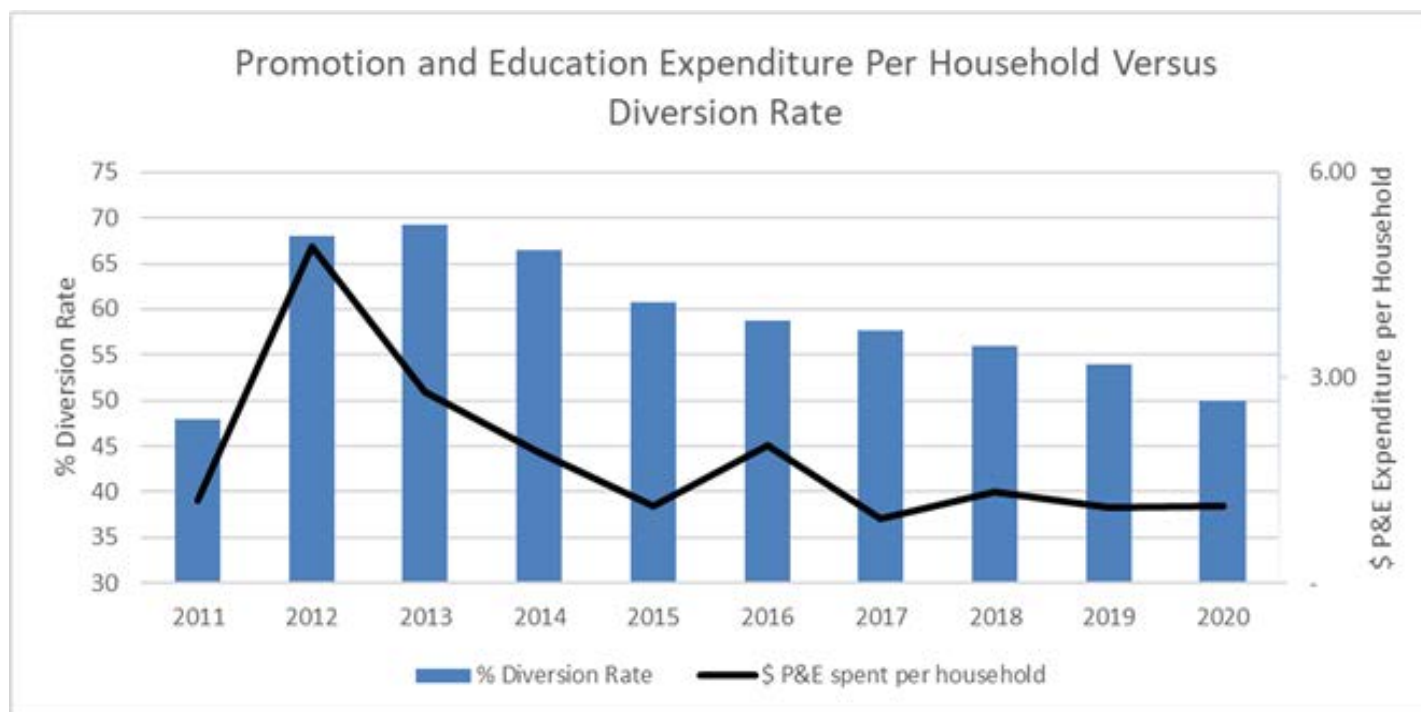
Introduce Organics pick up at schools in 2026 after Blue Box transition

Concerns from Engagement

Time to adjust to changes in service levels

- **Concern:** affected businesses need time to find new service providers
 - The by-law for service level changes takes place in 2023

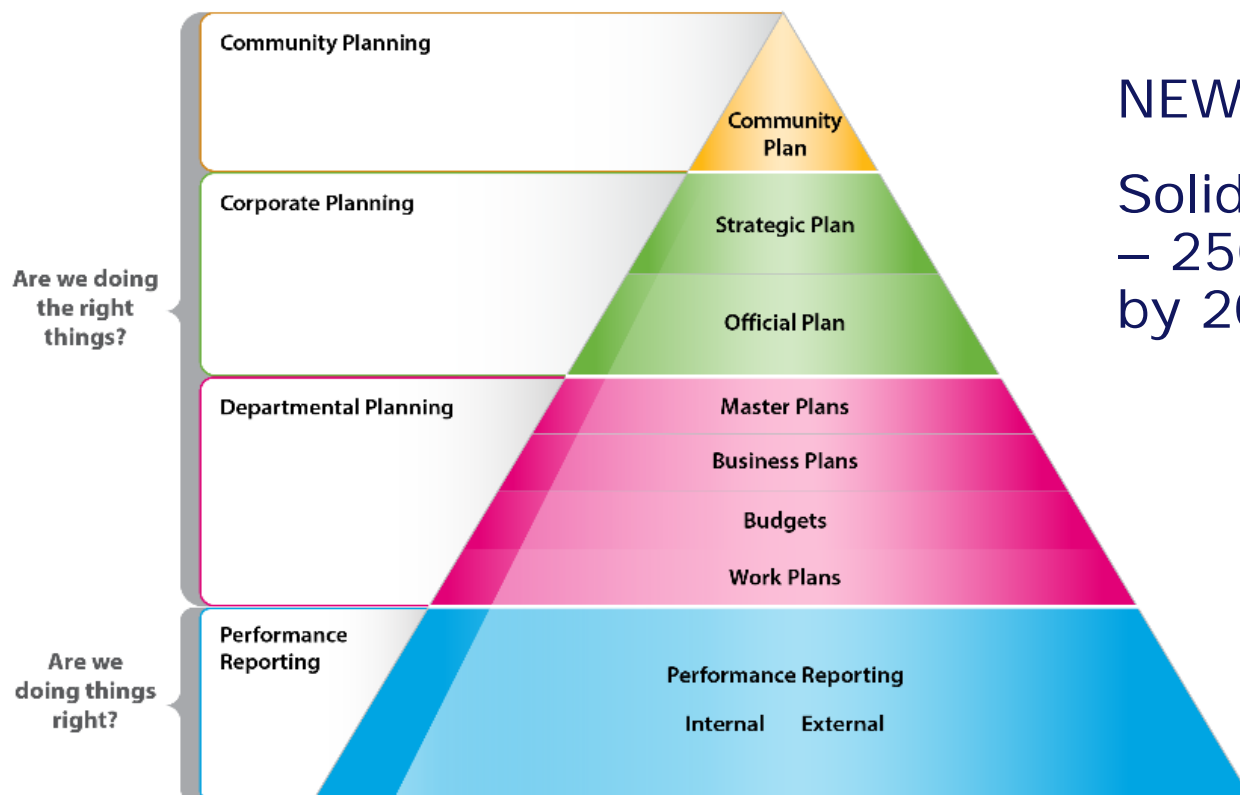
Environmental Programs



Recommendation:
Increase funding
to \$4/HH

Note: diversion rates decreasing also due to lighter packaging
Funding hasn't increased with the growing city
Funding reduction during budget preparation

Measuring the Master Plans



NEW!

Solid Waste KPI
– 250 kg/HH
by 2030

Budget Estimates

Budget	Short and Medium Term (1-3 Years)	Long Term 4+ Years	Total Estimated Cost	Includes
Capital	\$2,996,000	\$418,000	\$3.414 million	\$2.28 million already in capital budget for Blue Box, AI development, consulting work
Planning & Implementation (one-time estimated operating costs)	\$216,000	\$0	\$216,000	Co-op students, P&E materials
Annual Estimated Operating Costs	\$602,000	\$161,000	\$763,000 (TBD)	2 FTE: Solid Waste Programs Coordinator, By-law Officer, co-op students

Note: the funding requested will be part of future budget deliberations

Thank you!