

Operations Facilities Long-Term Plan Update

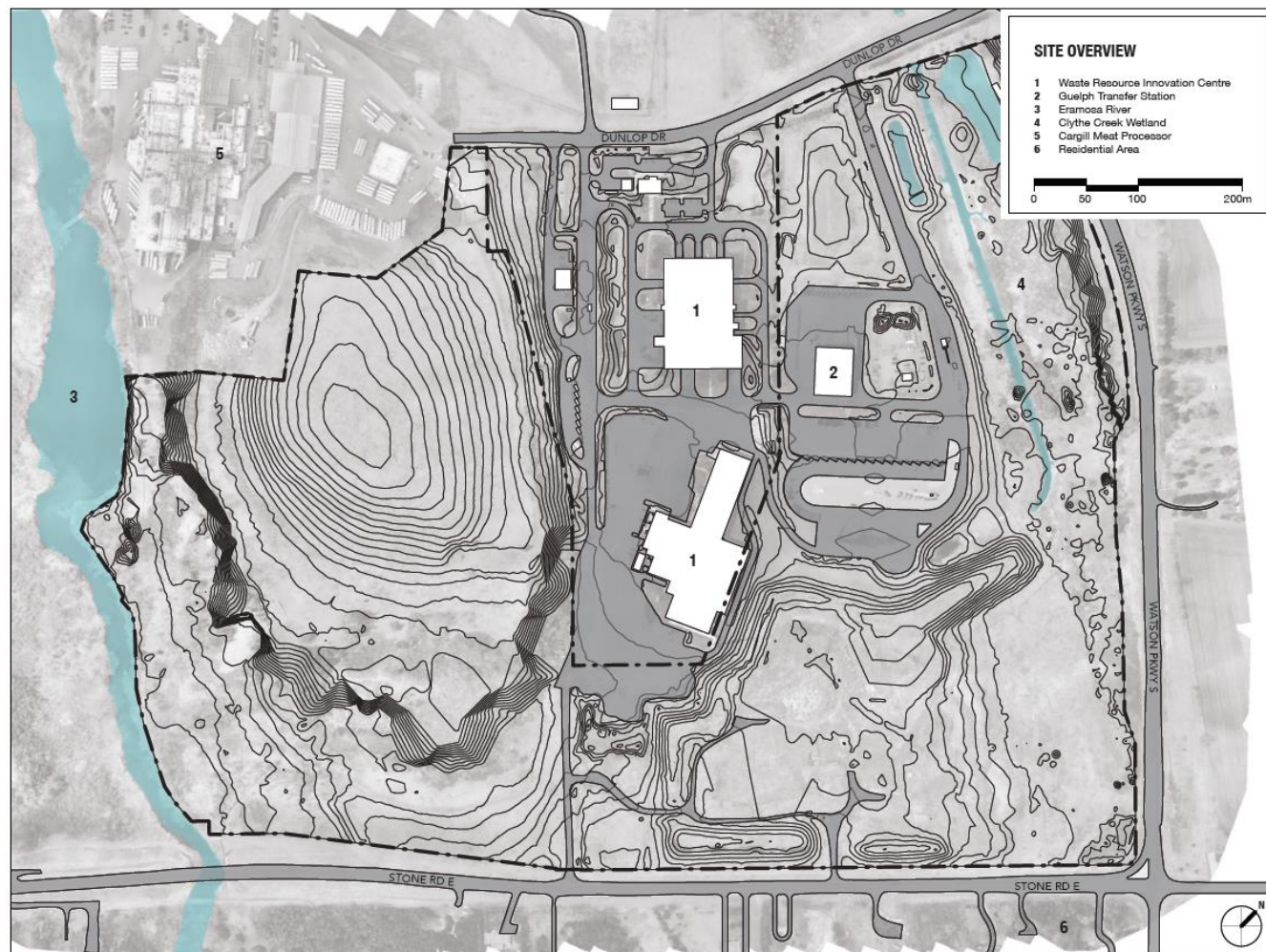
Bryan Ho-Yan, M.A.Sc., P.Eng., CEM

February 7, 2023

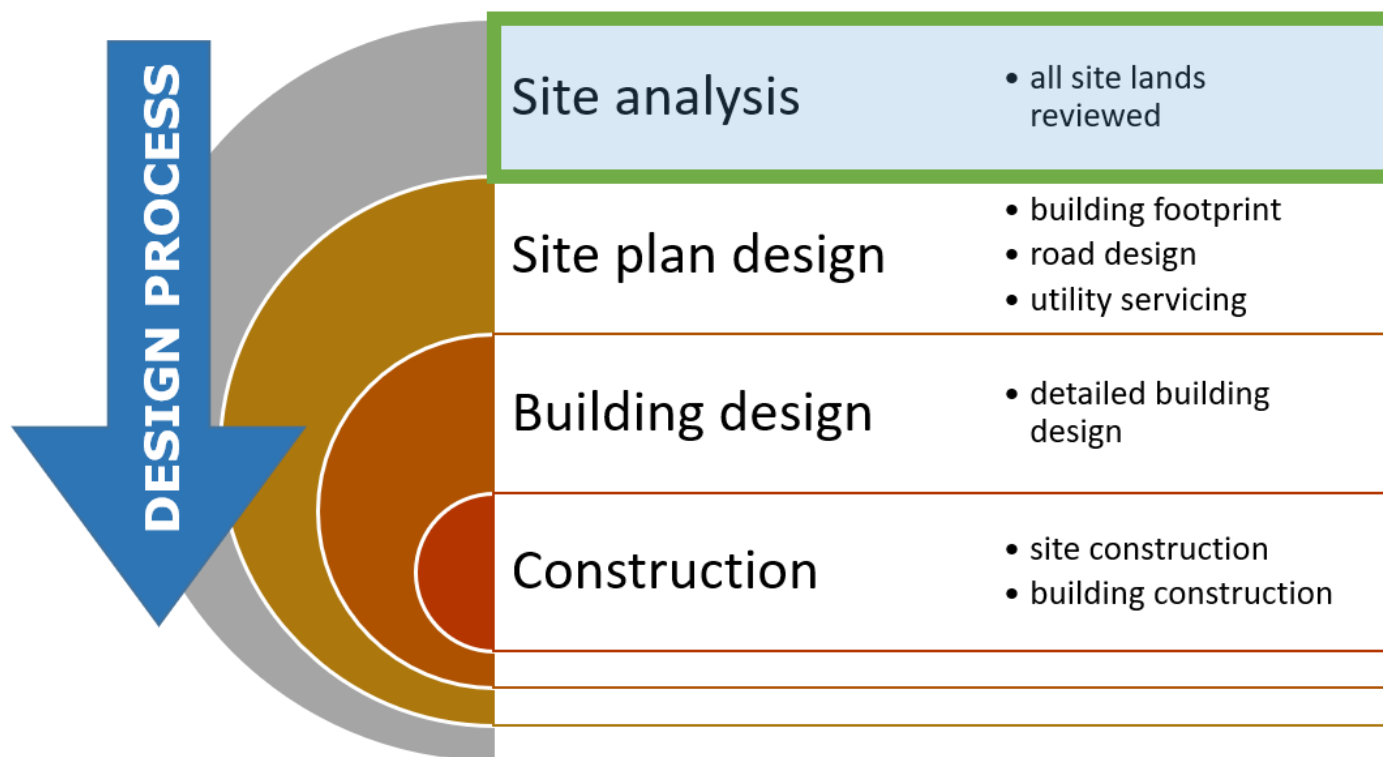
Committee of the Whole

Background

- Critical operations
- Operating facilities beyond capacity and end-of-life
- Watson-Stone site approved for new operating facilities

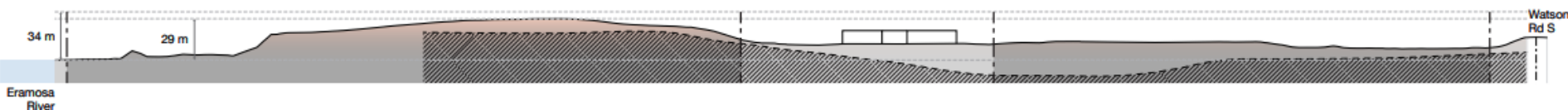
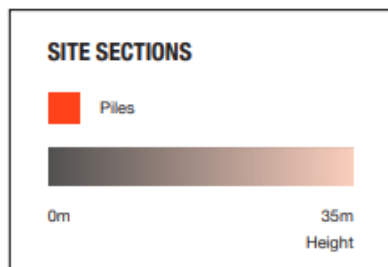
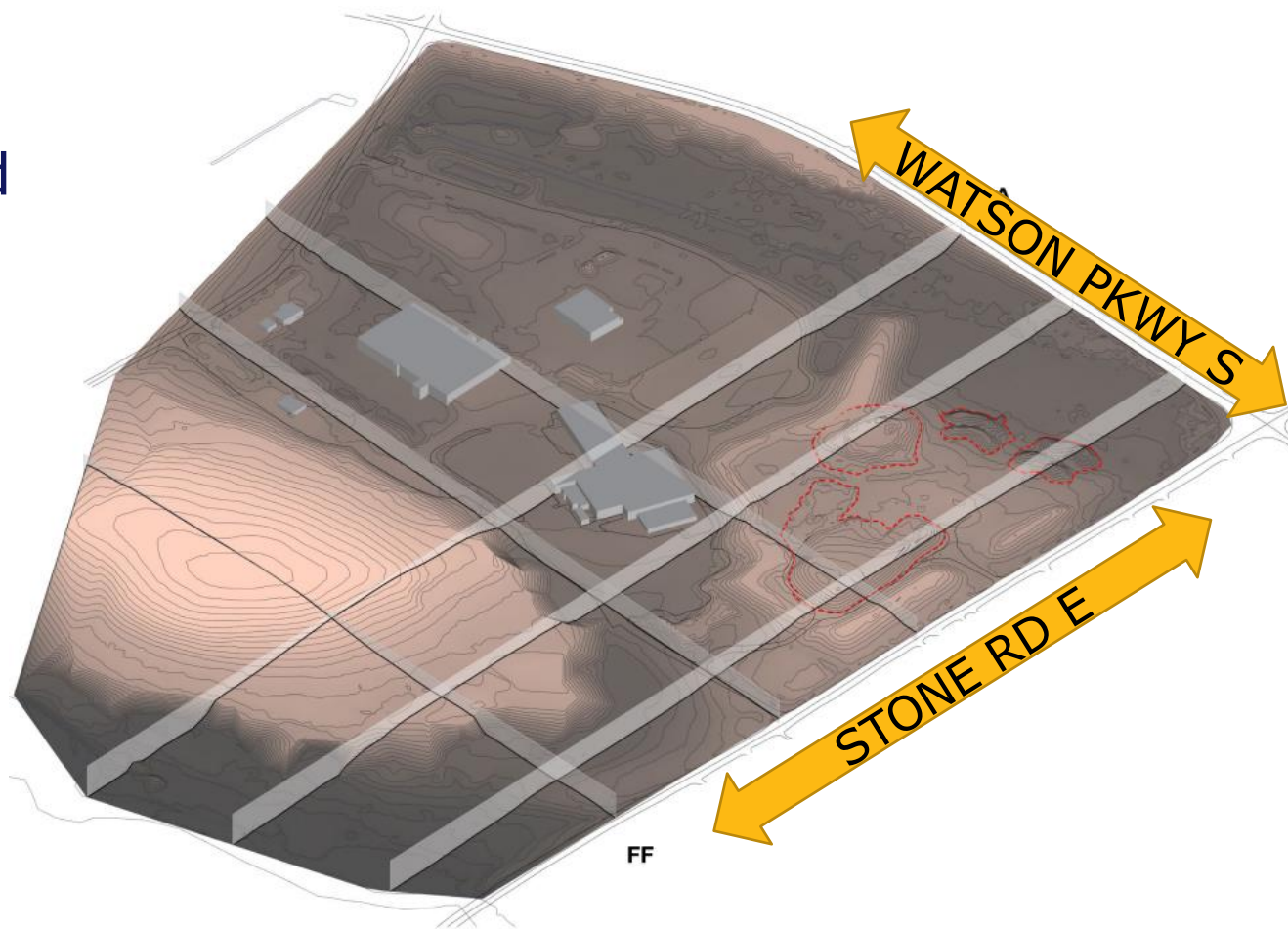


Site analysis



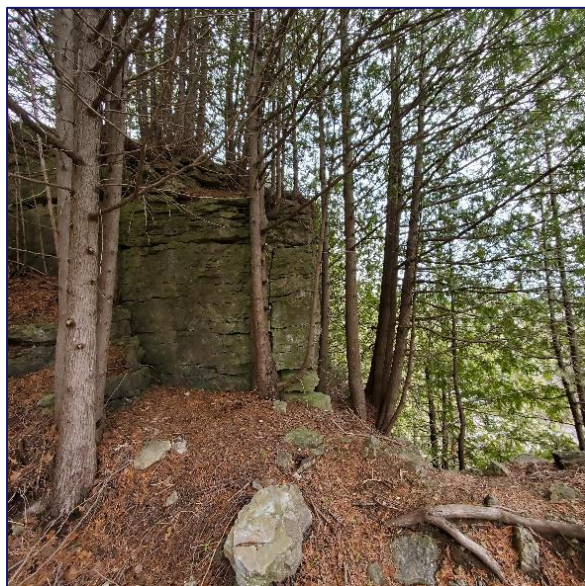
Site analysis – topography

- 35m elevation change
- Western elevated plateau
- Eastern lower elevation



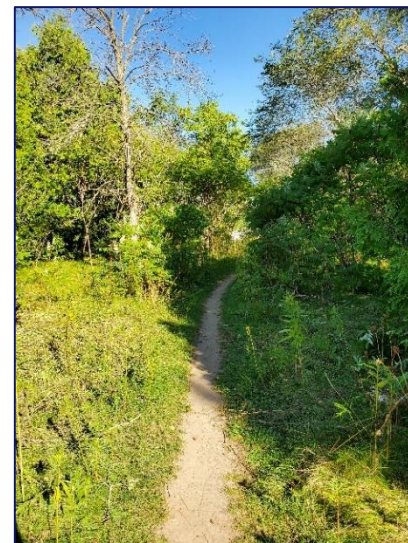
Site analysis – natural environment

- Woodlands
- Wetlands
- Wildlife habitat
- Eramosa River

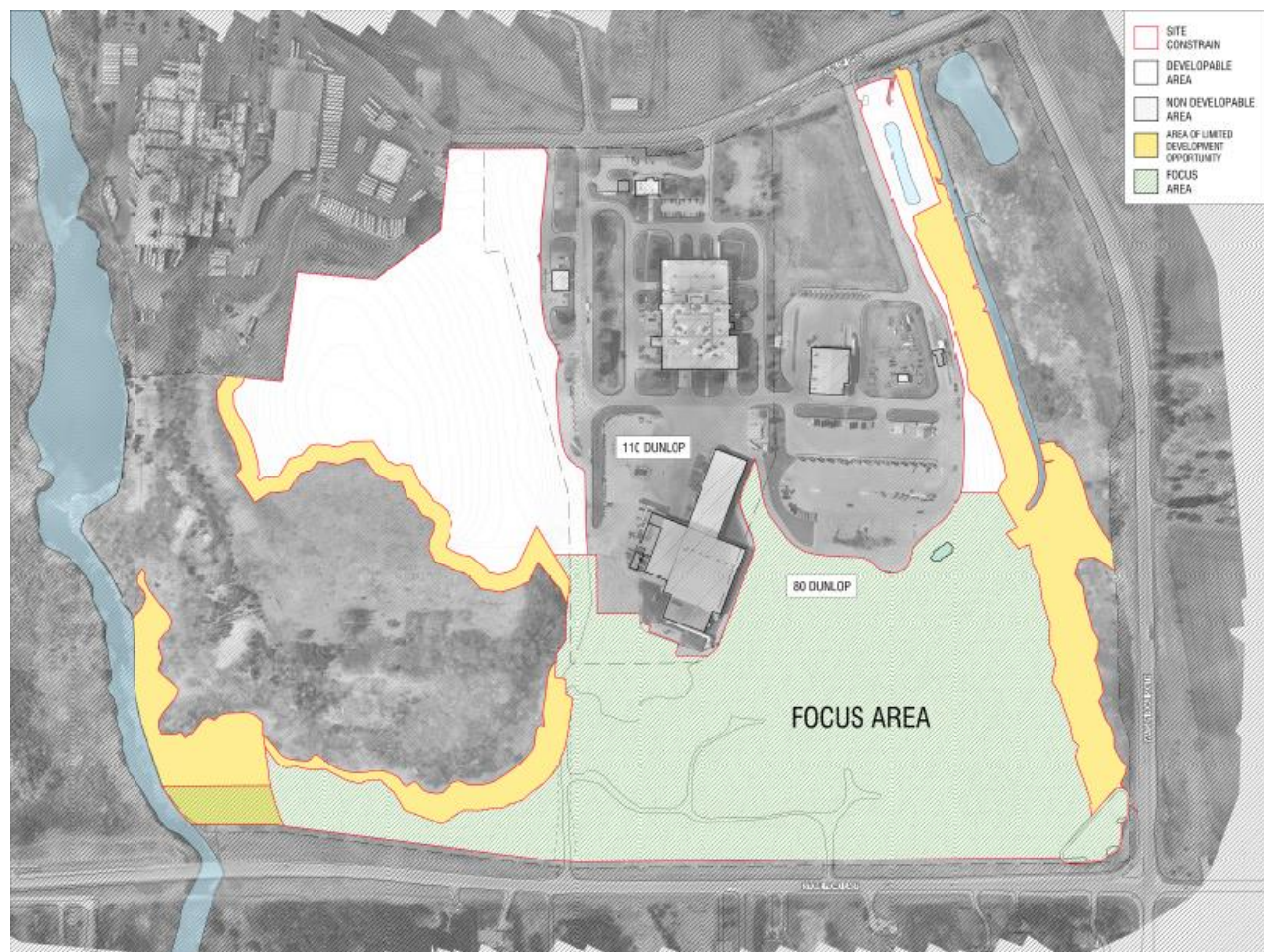


Site analysis – cultural heritage

- O.R. (Ontario Reformatory) Quarry
- Radial Trail Line

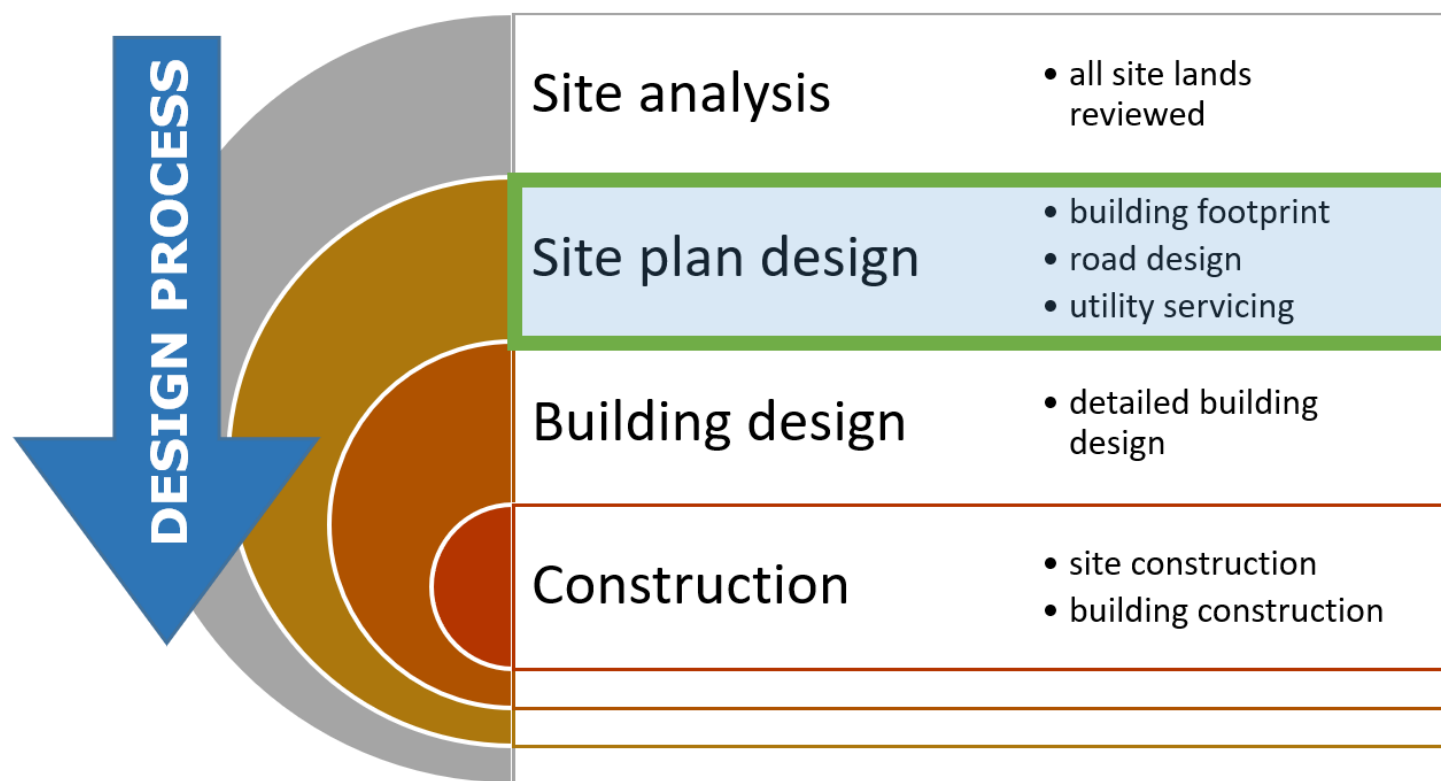


Site design parameters

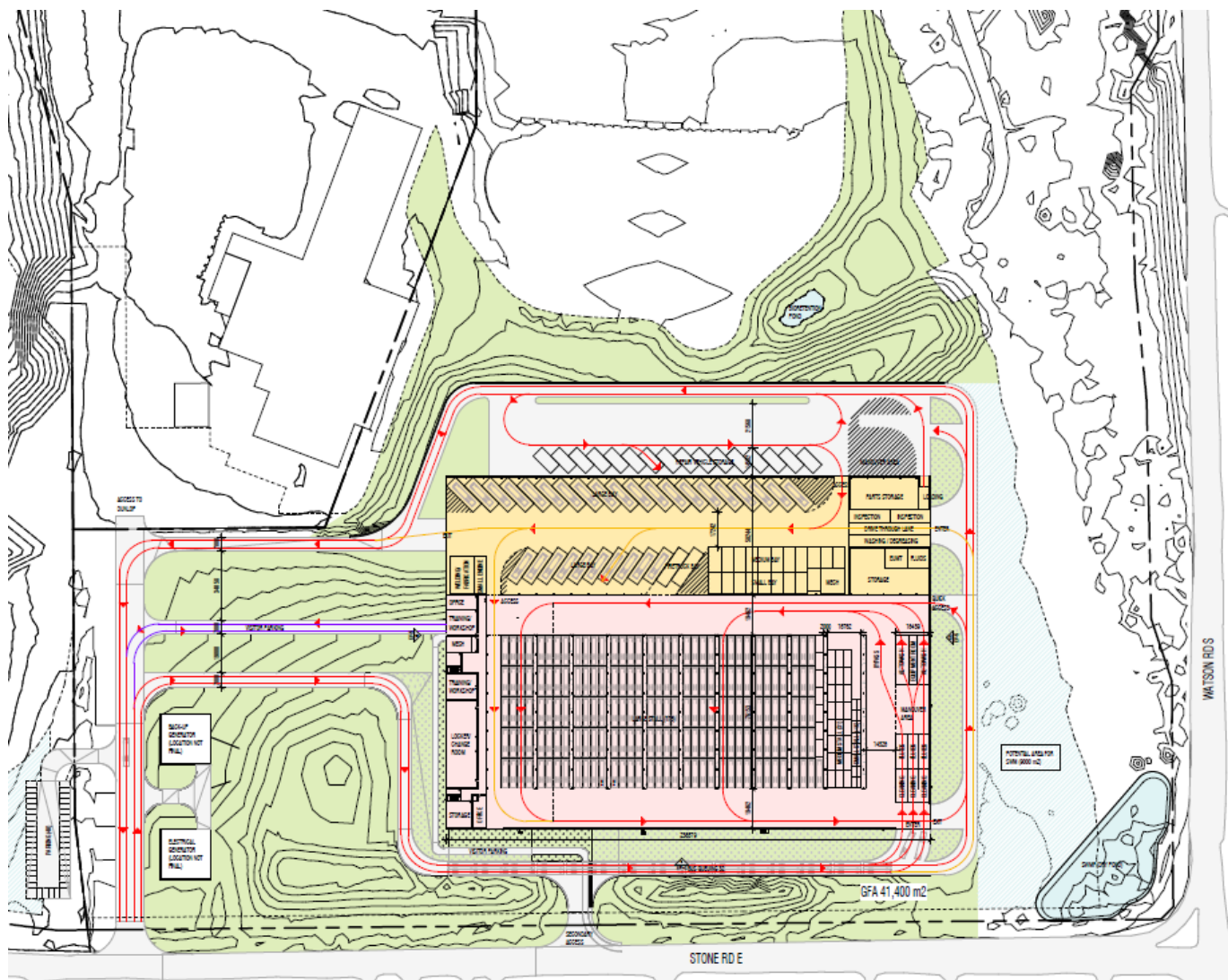


- Buffer zones
- Situate at eastern portion
- Condensed design

Site plan concept design



Site plan concept design



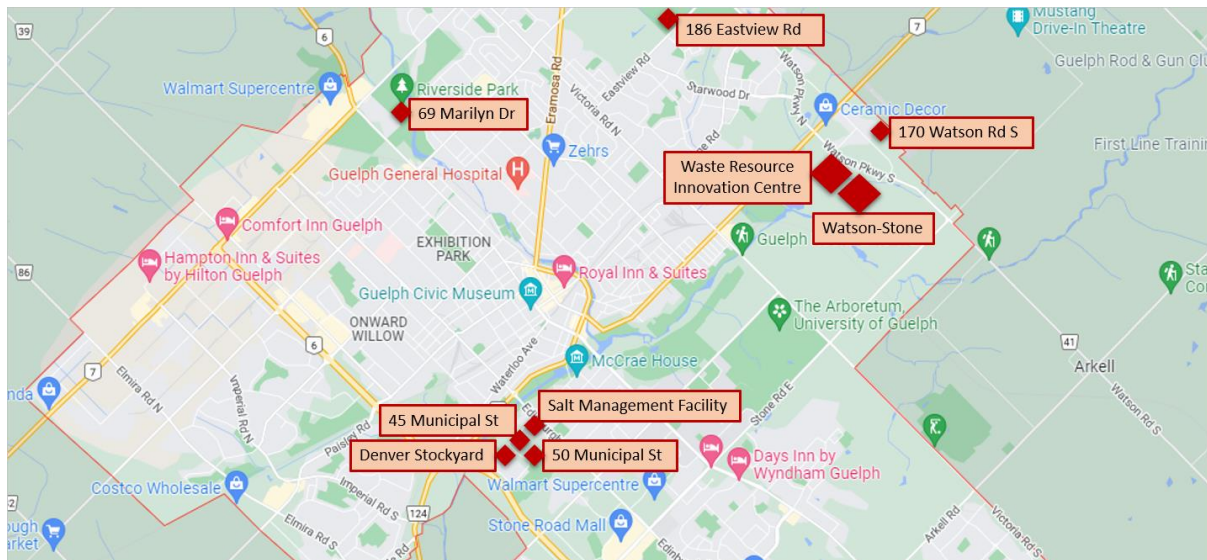
- Guelph Transit & Fleet Services
- 40,000+ sqm
- Reduced environmental & cultural impact
- Topography incorporated
- Electrical infrastructure

Long-term plan



Long-term plan

SW – Solid Waste
CBM – Corporate Building Maintenance
PW – Public Works

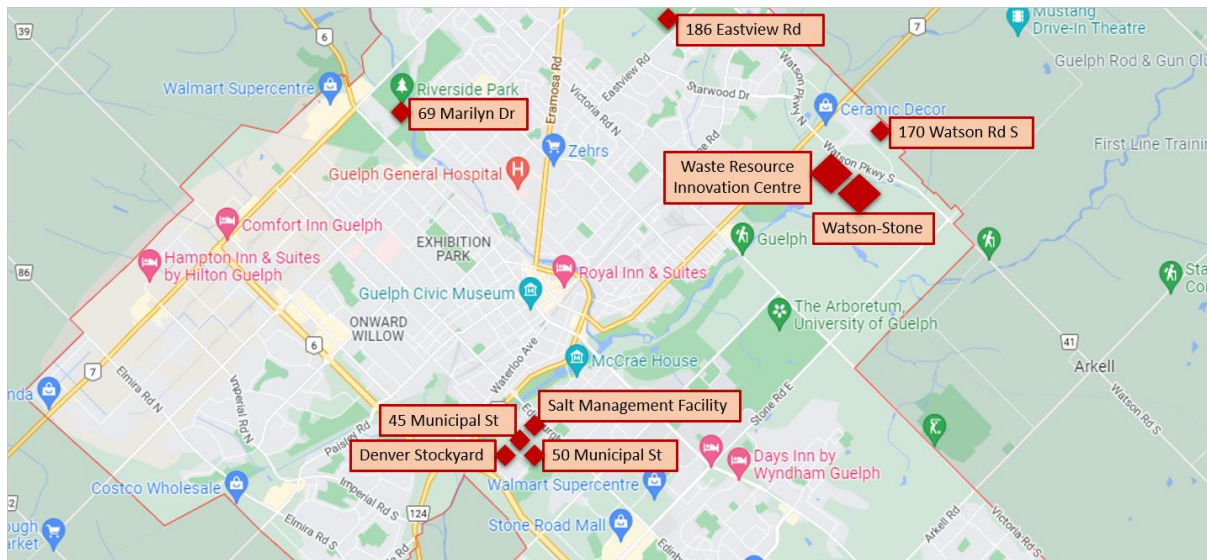


45 Municipal Area

	Watson -Stone	170 Watson	45 Municipal	Salt Storage	75 Denver	50 Municipal	186 Eastview
Existing		<ul style="list-style-type: none"> • Transit • Fleet-Transit 	<ul style="list-style-type: none"> • Fleet-NonTransit • PW-Admin 	<ul style="list-style-type: none"> • Salt 	<ul style="list-style-type: none"> • PW Outdoor Storage 	<ul style="list-style-type: none"> • PW-Vehicles • Parks 	<ul style="list-style-type: none"> • CBM

Long-term plan

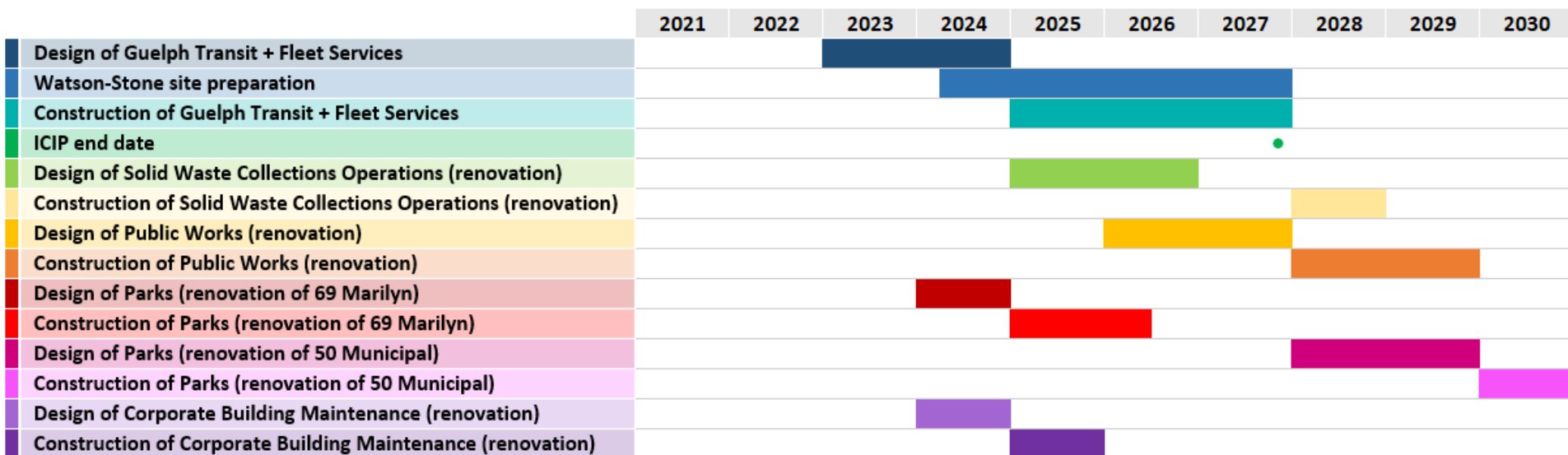
SW – Solid Waste
CBM – Corporate Building Maintenance
PW – Public Works

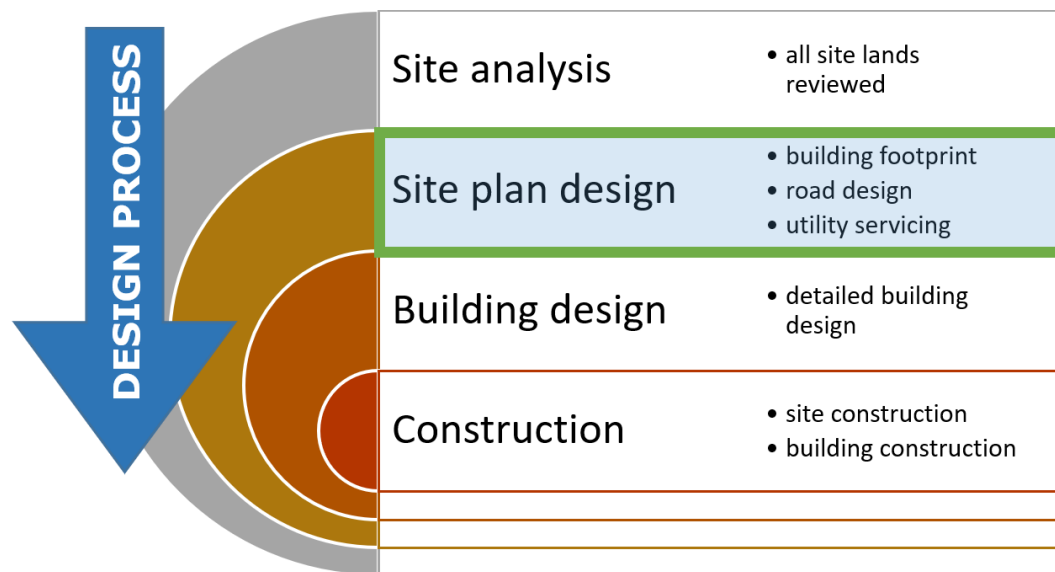


45 Municipal Area

	Watson -Stone	170 Watson	45 Municipal	Salt Storage	75 Denver	50 Municipal	186 Eastview
Existing		<ul style="list-style-type: none"> • Transit • Fleet-Transit 	<ul style="list-style-type: none"> • Fleet-NonTransit • PW-Admin 	<ul style="list-style-type: none"> • Salt 	<ul style="list-style-type: none"> • PW Outdoor Storage 	<ul style="list-style-type: none"> • PW-Vehicles • Parks 	<ul style="list-style-type: none"> • CBM
New Proposed	<ul style="list-style-type: none"> • Transit • Fleet 	<ul style="list-style-type: none"> • SW Collections 	<ul style="list-style-type: none"> • PW 	<ul style="list-style-type: none"> • Salt 	<ul style="list-style-type: none"> • PW Outdoor Storage 	<ul style="list-style-type: none"> • Parks 	<ul style="list-style-type: none"> • CBM

Staging plan





Next steps

- Site plan application
- Utility servicing design
- Building design

Recommendations

1. That staff continue to design a new Guelph Transit and Fleet Services facility at the municipal-owned site located at the northwest corner of Watson Parkway South and Stone Road East.
2. That staff proceed with developing the revised Operations Facilities Long-Term Plan to utilize existing municipal-owned sites 45 Municipal Street, 50 Municipal Street, 170 Watson Road South, 69 Marilyn Drive and 186 Eastview Road for operating services Public Works, Solid Waste Collections, Parks, and Corporate Building Maintenance.
3. That staff proceed with the planning and design of the Operations Facilities Long-Term Plan and be directed to seek Council approval through the multi-year budget process.