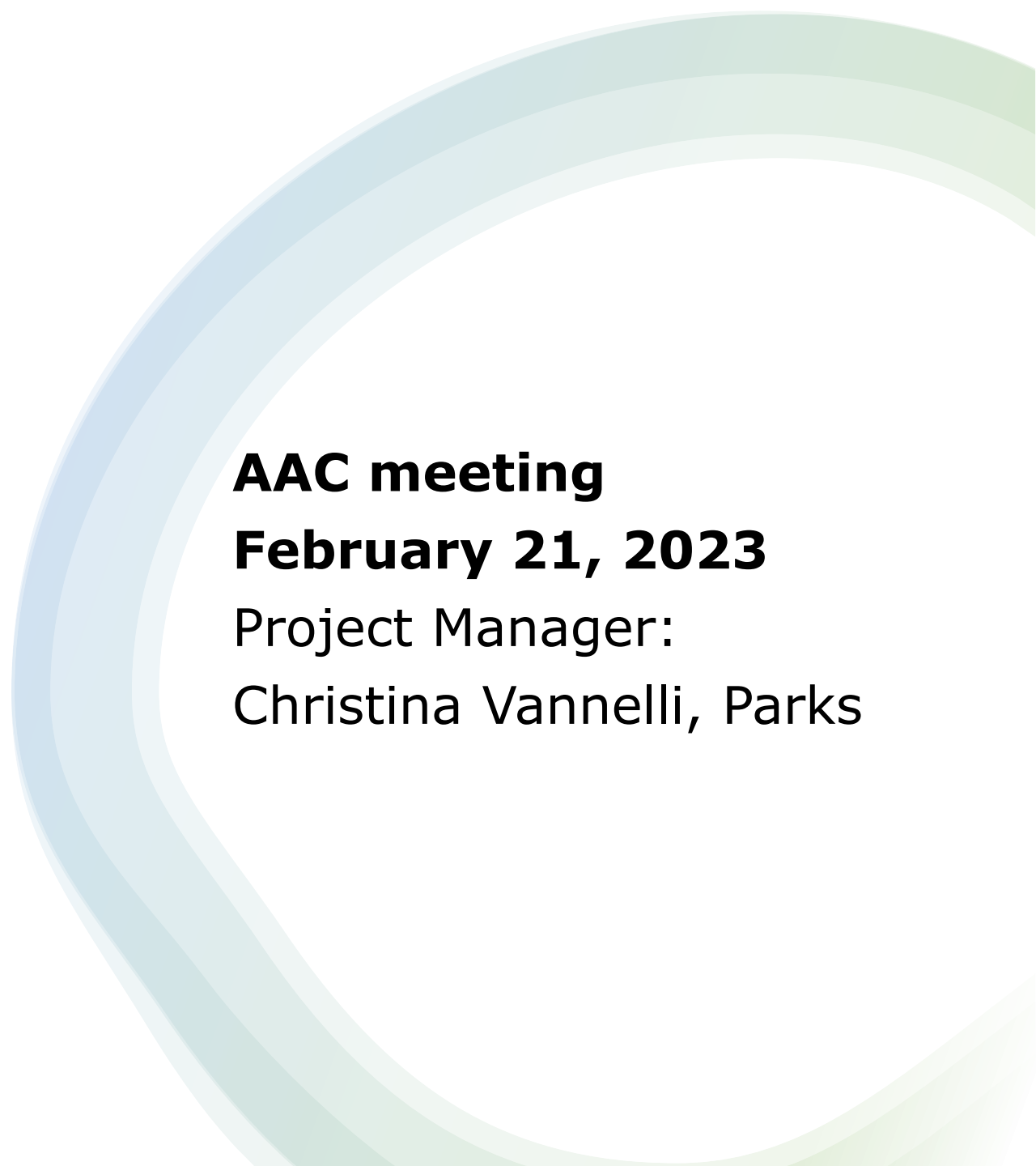




Margaret Greene Park Splash Pad



AAC meeting
February 21, 2023
Project Manager:
Christina Vannelli, Parks

Agenda

1. Background information:

Scope: Splash pad accessibility criteria

2. Accessibility related feedback about:

- Splash pad equipment selection
- Site seating and shade

Looking forward to your questions and comments
at the end of the presentation

Margaret Greene Park

Currently, in the park there is:

- A washroom building with:
 - one accessible washroom
 - water bottle filling station
- Parking lot with three accessible parking spaces
- Accessible seating: benches
- Soccer fields
- Playground – accessible (replacement expected 2026)
- Tennis courts–accessible design
- Accessible walkways



Presentation and discussion scope

We are here to:

- Engage the AAC early in the design process for the splash pad

Your input will be considered:

- In the RFP for splash pad equipment vendor (estimated beginning of March 2023)
- For splash pad equipment selection
- In concept design development
- In addition to feedback received through community engagement

Design Requirements

Design guidelines to be met:

Federal and provincial standards will be met in addition to the AODA and FADM requirements.



Example of Hanlon Creek Splash Pad in Guelph

Design Guidelines:

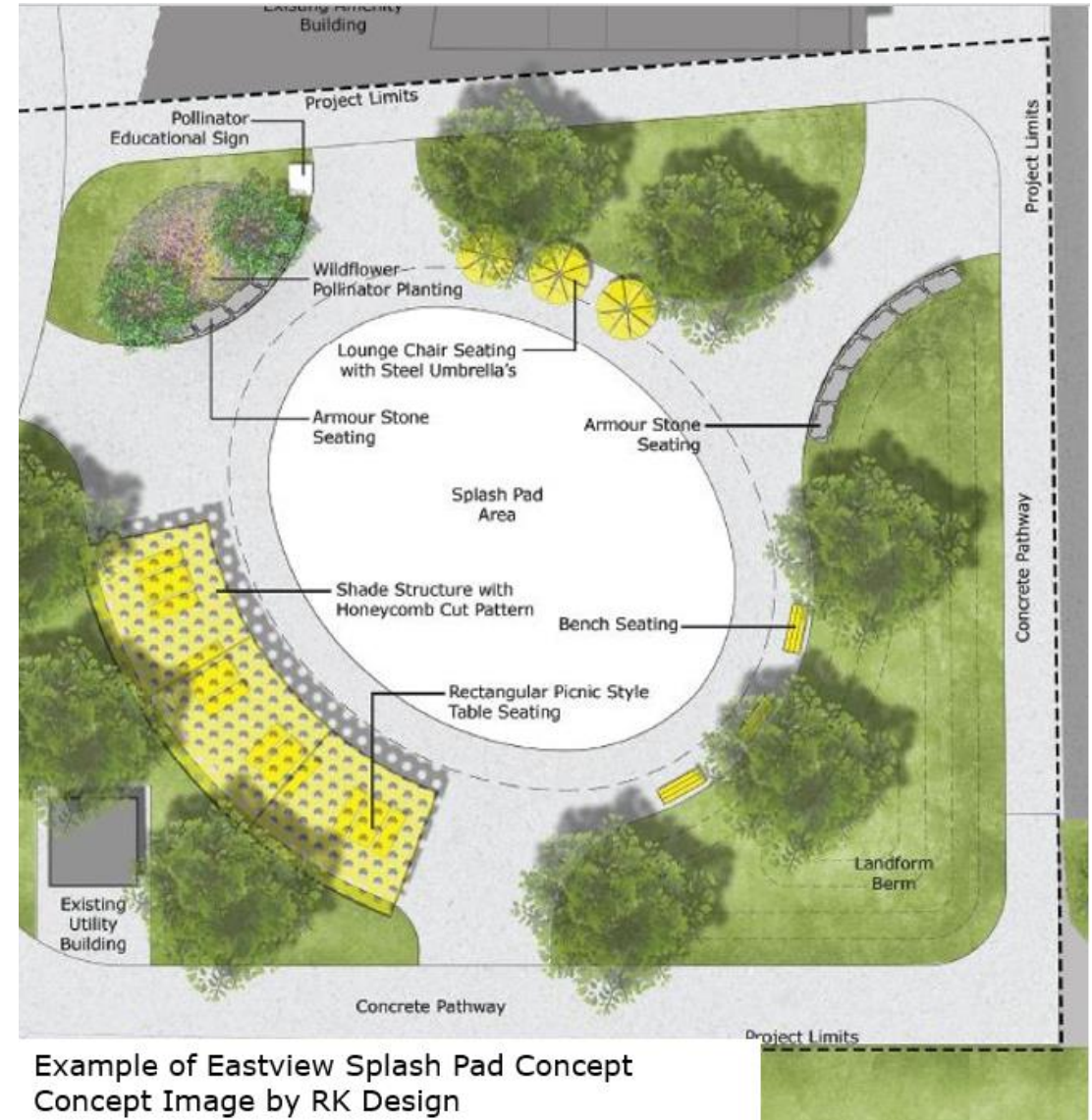
- Splash pad fixtures at a variety of heights and a variety of spray features and locations;
- Play components grouped together by age and skill level;
- Spacing in between fixtures to be FADM compliant;
- FADM space for circulation around the splash pad;
- Provide accessible route from parking to splash pad which meets FADM requirements
- Colour contrast will comply with FADM requirements
- Accessible seating options

Splash Pad Seating and Shade (1 of 2)

Seating and shade structure layout.

- cluster seating,
- picnic tables,
- benches, and
- shade structure

Similar products will be specified during the detailed design of the splash pad. The amount of shade provided will be relative to the size of the splash pad.



Splash Pad Seating and Shade (2 of 2)

Background for your feedback:

- Variety of seating options,
- Benches will include bariatric seating complete with two armrests, and
- Shade structure - filtered shade element, like Eastview and Hanlon Creek splash pads.



Questions for AAC

What is your accessibility-related feedback on:

- Splash pad equipment:
 - Low and ground water features (example: bubblers)
 - Vertical and tall water features (example: tall sprayers, water jets)
- Site seating and shade:
 - Seating (example: cluster, picnic tables, benches)



Next Steps after Feedback in this Meeting:

1. Community Engagement (begins March 28)
2. Opportunity for AAC to engage during Community Engagement – Sarah can provide Have Your Say link when engagement is live
3. Staff will finalize design with Consultant and an internal review will occur (estimated for end of June)
4. Staff will return to the AAC to show how recommendations were implemented in the final design
5. Construction Start (estimated for October)