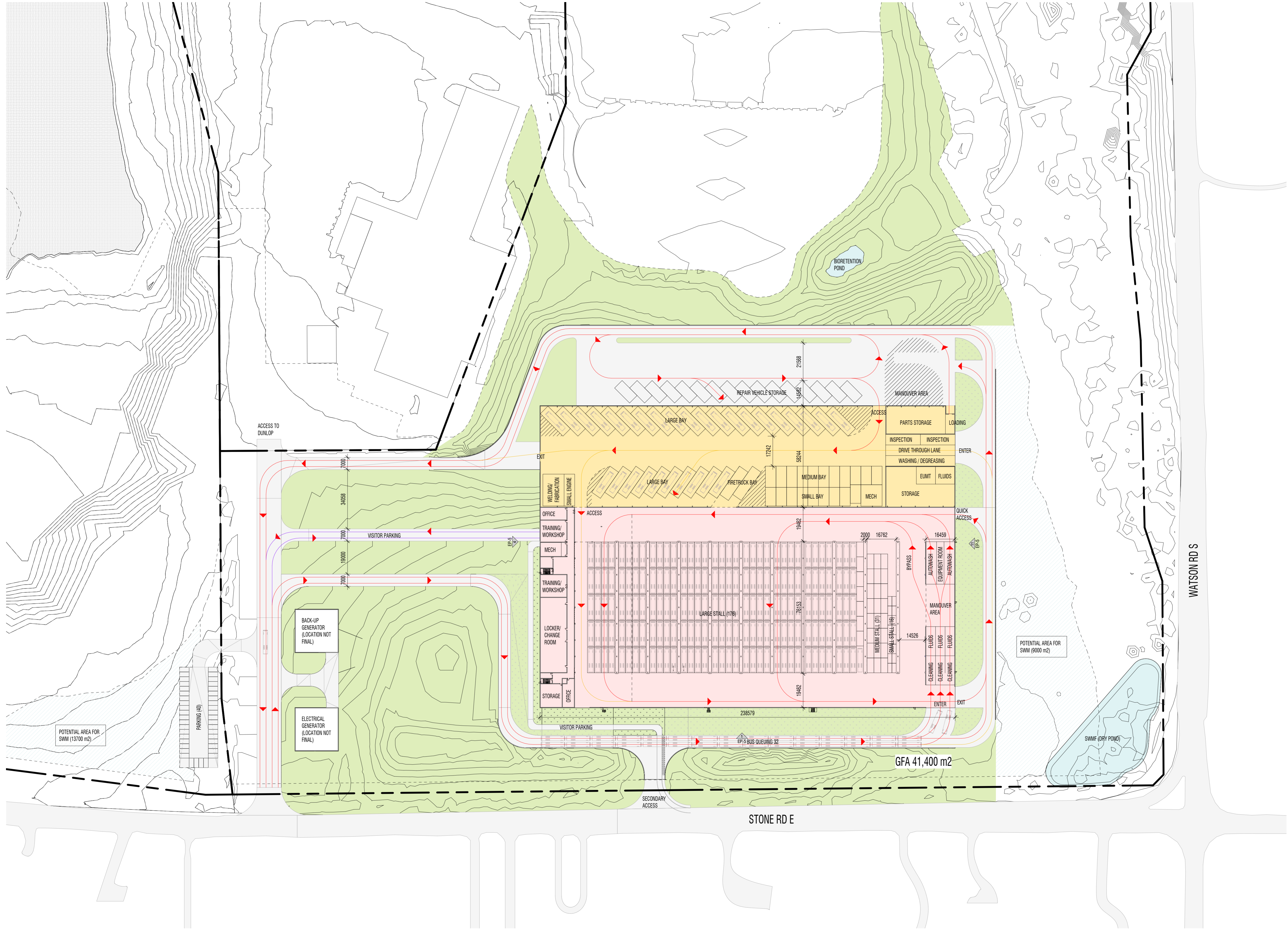


Copyright is that of the Architect.
 Any version of this drawing reproduced by any means from any media without prior written approval of the Architect is to be read for information only.
 The Architect is not liable for any loss or distortion of information resulting from subsequent reproduction of the original drawing.

- GENERAL NOTES:**
1. Drawings are not to be scaled. Contractor will verify all existing conditions and dimensions required to perform the Work and will report any discrepancies with the Contract Documents to the Architect before commencing work.
 2. The Architectural Drawings are to be read in conjunction with all other Contract Documents including the Project Manuals and the Structural, Mechanical and Electrical Drawings. In cases of difference between the Contract Documents with respect to the quantity, sizes or scope of work, the greater shall apply.
 3. Positions of exposed or finished Mechanical or Electrical devices, fittings and fixtures are indicated on the Architectural Drawings. Locations shown on the Architectural Drawings shall govern over Mechanical and Electrical Drawings. Mechanical and Electrical items not clearly located will be located as directed by the Architect.
 4. Dimensions indicated are taken between the faces of finished surfaces unless otherwise noted.
 5. The architect has not been retained for supervision of construction and assumes no responsibility for means, methods and techniques of construction.
 6. These documents are not to be used for construction unless specifically noted for such purpose.



Rev. Date Issued

gh3
 gh3*
 55 OSSINGTON AVE. SUITE 100
 Toronto, ON, Canada M6J 2Y9
 416 915 1791

CITY OF GUELPH
 GUELPH CITY OPS

80 DUNLOP DRIVE, GUELPH, ON.



SCALE 1 : 1000
 PROJECT NO. 202103
 ISSUE DATE January 4th, 2023

OPTION 2B

CONCEPT PLAN