

Heritage Guelph Meeting

April 11, 2023

### **Item 3.1: 785 York Road - Heritage Impact Assessment for Powerhouse, Chimney and Service Tunnel at the Ontario Reformatory**

#### **Delegation**

Presentation: Miranda Brunton and David Addington, (Infrastructure Ontario)

#### **Summary**

A Heritage Impact Assessment is being prepared by Stevens Burgess Architects for Infrastructure Ontario regarding environmental remediation options for the Powerhouse, chimney and service access tunnel within the Ontario Reformatory detention complex at 785 York Road. A delegation from Infrastructure Ontario will provide a presentation for information to the committee.

#### **Location**

The Powerhouse building and its associated chimney stack and service access tunnel are within 785 York Road (Figure 1) a property owned by the Province of Ontario.

#### **Background**

In October 2021 the City of Guelph passed By-Law Number (2021)-20631, under the Ontario Heritage Act to designate portions of the property known municipally as 785 York Road under Part IV of the Ontario Heritage Act. The municipal Statement of Heritage Value used the provincial Statement of Cultural Heritage Value as its basis and the Powerhouse, chimney and service tunnel to the Powerhouse were not identified as heritage attributes protected by the individual property designation.

On June 2022 City Council directed staff to list the Powerhouse, Chimney and Service Tunnel as non-designated built heritage resources on the City's Municipal Register of Cultural Heritage Properties (Figure 1).

The Powerhouse building, its associated chimney stack and service access tunnel are identified as heritage attributes within the Ontario Reformatory Heritage Conservation District boundary (Figure 2). These buildings are within Character Area C and identified as HCD attributes 99 and 96 respectively.

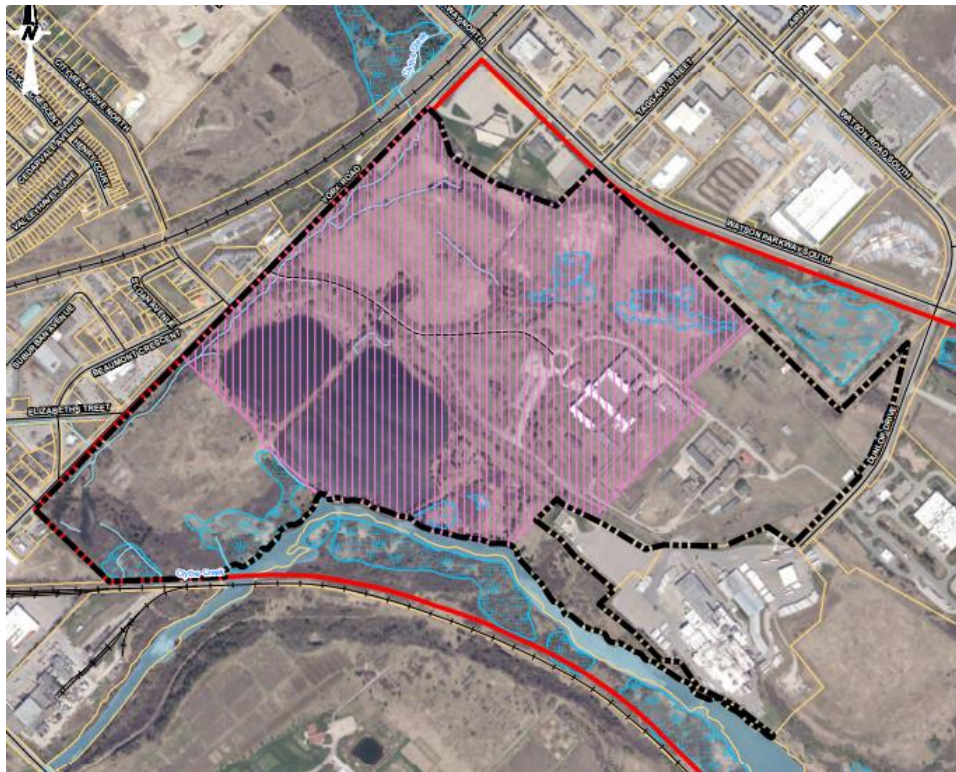
The Powerhouse (Figure 3) is one of the oldest buildings on the reformatory site and was built in 1910-11 with inmate labour. The Powerhouse is described in the Ontario Reformatory HCD Study's property information database as a one-storey,

double-height building with a rectangular footprint and a flat roof. The building is constructed of concrete with brick and terracotta infill clad in rough-cut limestone laid in broken coursing. The building is now clad with corrugated metal panels. Despite the modern cladding, the three-quarter height pilasters are present on all facades, similar to those on the Machine Shop building [HCD attribute 108]. A brick, 100-foot chimney is extant beside the south façade. The Service Tunnel [HCD attribute 96] is located partially above ground and is constructed of cast-in-place-concrete with a flat roof and small rectangular windows with divided-lights and concrete sills.

As the OR HCD designation process is just beginning its second phase the current heritage status of the Powerhouse, chimney and service tunnel remain as listed (non-designated) built heritage resources.

While 785 York Road is owned by the Province, any proposed demolition of a built heritage resource on that property that is listed on the municipal heritage register is not subject to Council approval or restrictions on demolition under Section 27 (9) of the Ontario Heritage Act. According to Infrastructure Ontario's Strategic Conservation Plan for the Guelph Correctional Centre and the Standards and Guidelines for the Conservation of Provincial Heritage Properties under Section 25.2 of the Ontario Heritage Act - should demolition of any building be considered prior to sale of the property only the Minister's Consent is required in advance of demolition activities.

Figure 1 – 785 York Road and (below) record for the Ontario Reformatory Powerhouse building complex in the City of Guelph's Municipal Register of Cultural Heritage Properties.



**785 York Road – Ontario Reformatory Powerhouse building complex**

Built c. 1911

Powerhouse Building  
Chimney Stack  
Services Tunnel near Powerhouse  
Wood Kiln Building  
Planing Mill and Stores  
Woolen Mill Building

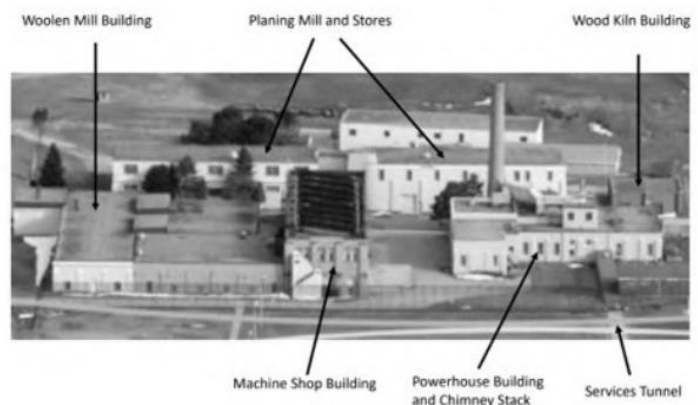




Figure 2 - Ontario Reformatory Heritage Conservation District boundary and detail showing location of Powerhouse. (Images: WSP and City of Guelph)

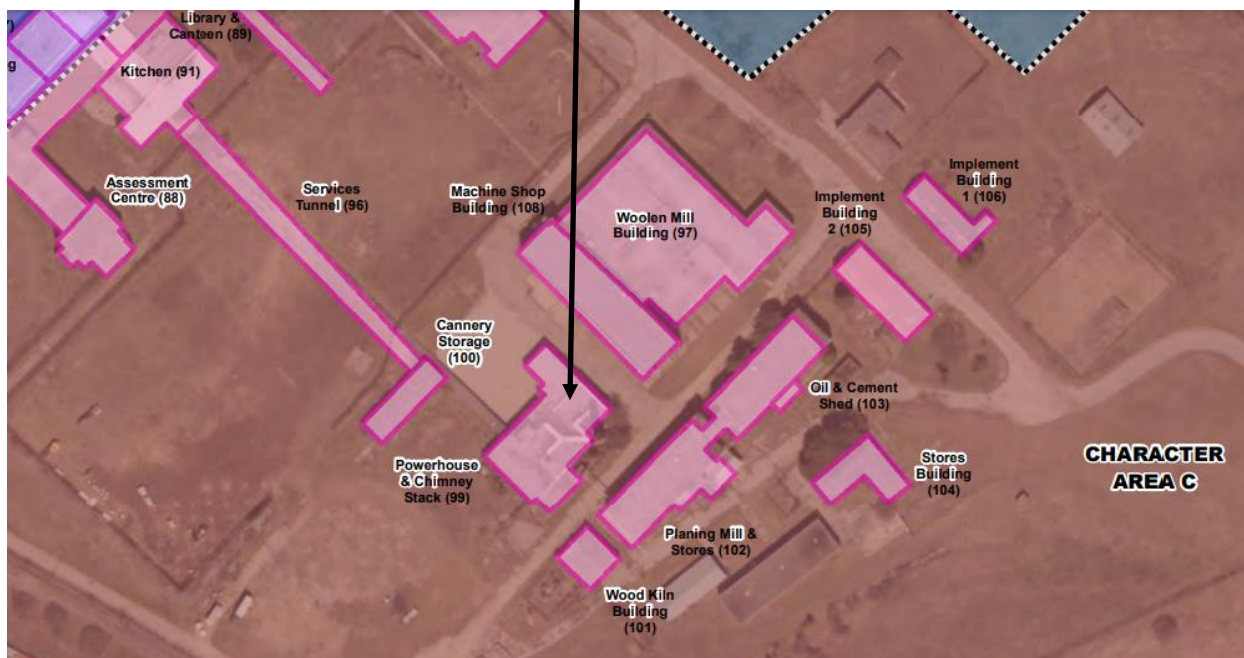
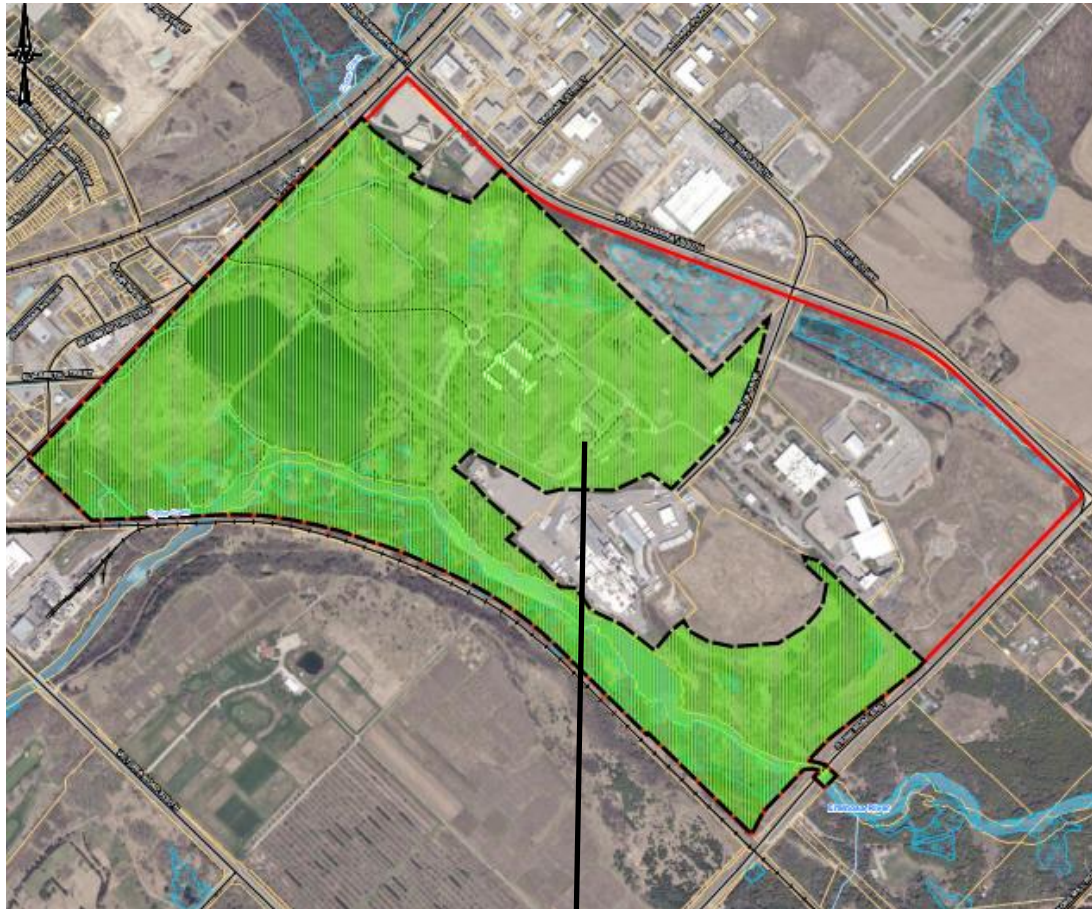




Figure 3 - Current photos of the Powerhouse and associated chimney and service tunnel (Photos: Heritage Planning, City of Guelph)

