

Attachment-2 Historical Images

Figure 1 - Detail from Cooper's Map the Town of Guelph, 1875 showing hospital and "Hospital Grounds" within the Stewart Survey. (Image: Guelph Civic Museum).



Figure 2 - Plan 133 (registered c. 1868, part of the G. M. Stewart Survey)

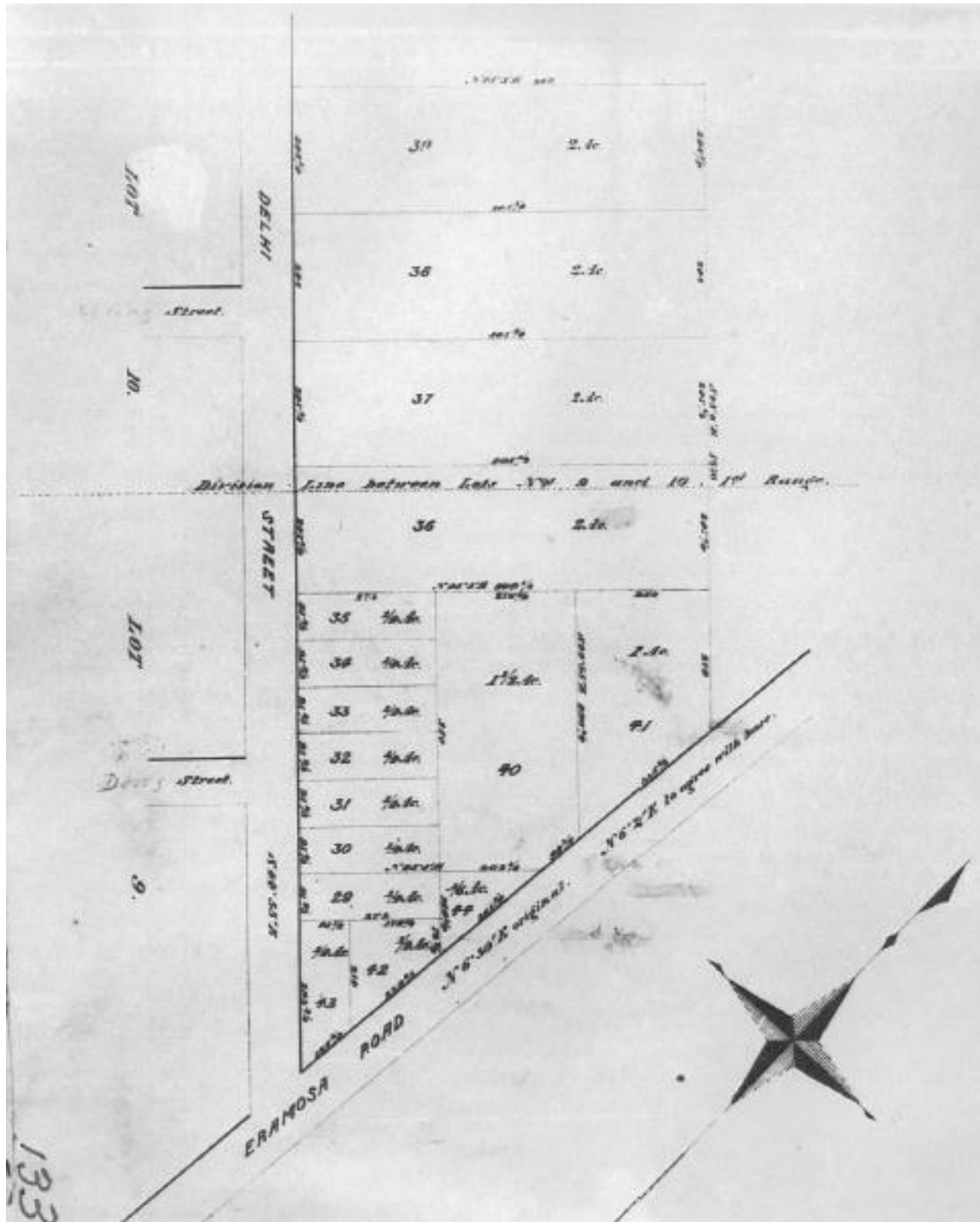


Figure 3 - Detail from Sheet 23 of the Fire Insurance Plan of Guelph, 1897 (revised 1911) (Image: Guelph Civic Museum)

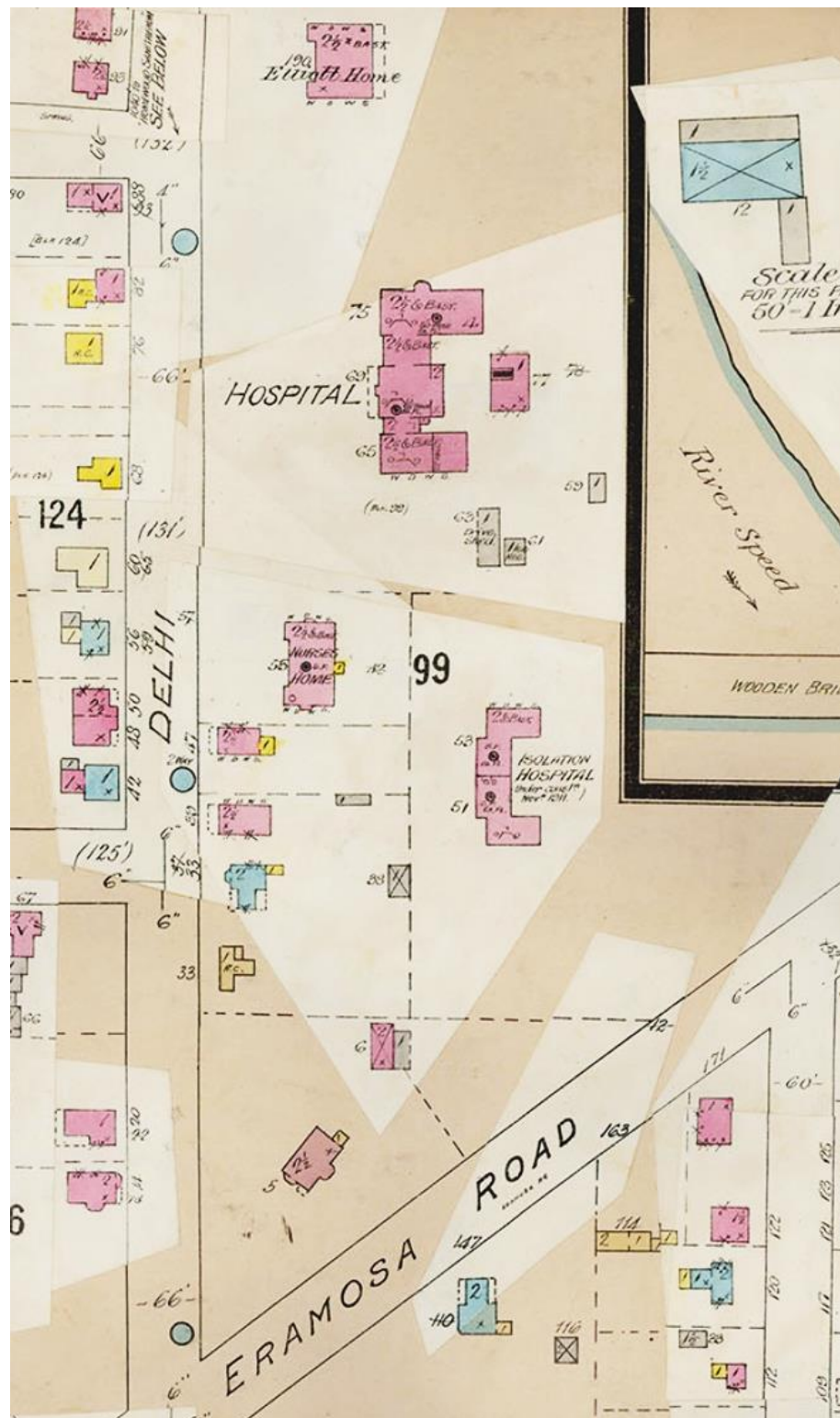


Figure 4 - Postcard image of Guelph Isolation Hospital, c. 1916 (Guelph Civic Museum 1986.18.127)



Figure 5 - Tanner home on Oxford Street, c. 1910 (Guelph Civic Museum 2009.32.4397)



Figure 6 - Tanner home on Oxford St, c. 1915 (Guelph Civic Museum 1980.22.30)



Figure 7 - 31 Oxford St in 2022 (City of Guelph Heritage Planning)



Figure 8 - "W. T. Tanner" carved in paving stone at street curb. (City of Guelph Heritage Planning)



Figure 9 – “Willie” and Sybil Tanner, c.1890 (Guelph Civic Museum 1980.22.19); Mr. W.T. Tanner and his son W.C. (Willie) Tanner, c. 1890 (Guelph Civic Museum 1980.22.21)



Figure 10 - William C. Tanner and Sybil Ester Tanner (children of Mr. and Mrs. W. T. Tanner), December 1901 (Guelph Civic Museum 1980.22.20); Mrs. Tanner c. 1915 (Guelph Civic Museum 1980.22.29)



Figure 11 - Mr. & Mrs. W.T. Tanner in front of O.A.C. Building, c. 1915 (Guelph Civic Museum 1980.22.28)



Figure 12 - Mr. and Mrs. Tanner, c. 1922 (Guelph Civic Museum 1980.22.27); Mrs. Wm. Clarence Tanner, daughter of James Andrew and Harriet Sybil Webster, c. 1925 (Guelph Civic Museum 1980.22.34)



Figure 13 - Offices of Tanner & Tanner located above A. D. Savage Optician on Douglas Street. (Guelph Public Library F38-0-15-0-0-514)



Figure 14 - Business card of Tanner and Tanner Architects (Guelph Civic Museum 1980.22.42)



Figure 15 - 37 Quebec St (Google)

