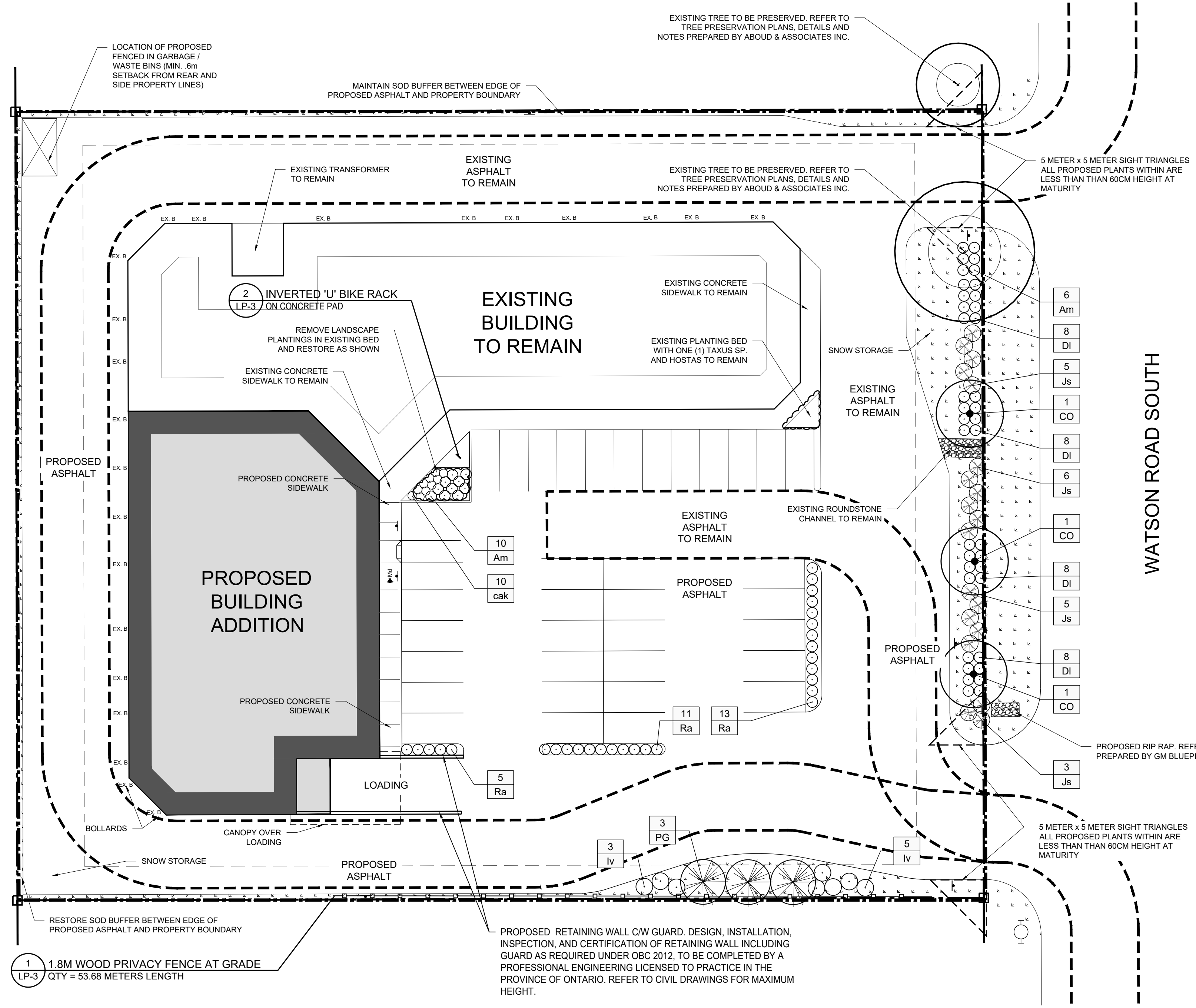


- Base information sources:
 - Site Plan prepared by Tacoma Engineers dated April 4, 2023.
 - Grading and Servicing Plans prepared by GM BluePlan Engineering dated February 2023.
 - Tree inventory and analysis conducted by Aboud & Associates Inc. June 23, 2022.
- All dimensions are in metric unless otherwise noted.
- Do not scale drawings. Dimensions are to be verified on site by Contractor prior to commencement of the work.
- These plans shall be read in conjunction with all details, notes, reports, written specifications, general conditions, any supplemental conditions and agreement which form the contract documents.
- These drawings shall not be used for construction purposes unless noted as "issued for Construction" and signed by the Landscape Architect or Professional Engineer.
- Contractor shall review all drawings and verify actual field conditions to determine the total scope of work and all required coordination prior to submission of bids and commencement of the work. Report any discrepancies to the Landscape Architect, for action to the satisfaction of the Owner.
- Contractor shall locate all underground, at grade and overhead utilities prior to commencement of the work. All utilities not necessarily shown on these drawings. Aboud & Associates assumes no responsibility for the accuracy of any utilities shown in these drawings.
- Contractor shall perform all work in accordance with the most current Ontario Building Code, Occupational Health and Safety Act and its regulations, as well as local municipal codes, regulations, and By-laws.
- Contractor shall identify the location of all internal/external construction access routes, parking and storage of materials in conformance with project erosion and sediment control plans for acceptance by the Owner. Construction, maintenance and removal/restoration of access, parking and storage facilities shall be included in the Contractor's bid price.
- Contractor shall submit shop drawings where indicated in these drawings. Shop drawings shall be certified by a Professional Engineer licensed in Ontario and reviewed by the contractor for dimensional correlation with the drawings and field conditions. Fabrication of elements on shop drawings shall not proceed until drawings have been reviewed and approved by a Professional Engineer and have been accepted for general design conformance by the Landscape Architect in writing. The cost of preparing shop drawings, as well as the services of a Professional Engineer, shall be included in the Contractor's bid price.
- Contractor proposed substitution of materials and products shall be submitted in writing for review by Landscape Architect and acceptance by Owner and Municipality.
- Material quantities on drawings shall take precedence over those in lists and schedules.
- Where traffic control is necessary, Contractor shall use the guideline of the Construction Safety Association of Ontario, municipal by-laws, the Highway Traffic Act and the Ontario Traffic Manual (Book 7). The cost of preparing, obtaining approvals and implementing traffic control plans shall be included in the Contractor's bid price, unless otherwise noted.
- Contractor shall erect temporary barriers, as required, to secure the work area. Contractor shall maintain temporary barriers in good repair and remove at the end of the work.
- Contractor shall provide layout and grade staking, for general review by Landscape Architect and acceptance by Owner.
- Contractor is responsible for protecting and/or reinstating site elements indicated in these drawings.
- Contractor is responsible for restoration of adjacent surfaces and existing site elements damaged by the Contractor in the performance of the work, including but not limited to roads, driveways, utilities, buildings, curbs, sidewalks, retaining walls, fencing, turf, flowers and woody vegetation. Restoration work shall be performed by the Contractor at no cost to the Owner and be completed in conformance with applicable Provincial, Municipal or Agency standards and requirements, to the satisfaction of the Owner/Agency of the damaged element.
- Where new paving or earthwork meets existing, smoothly blend line and grade of existing with new.
- Contractor or Owner to request in writing (email) Project Landscape Architect general review services at substantial performance of landscape work between May 1st and October 31st. Requests for review after October 31st will be carried out after May 1st the following spring.
- All work and materials are to be warranted by the Contractor for twenty-four (24) months from date of initial acceptance of all items by Municipal Staff and Project Landscape Architect.
 - The Contractor shall be retained by the Owner to perform maintenance, as described in these drawings for all the installed trees, shrubs, perennials, turf, and seeding during the warranty period.
 - OR
 - The Owner shall provide maintenance themselves or retain a separate Contractor to perform the maintenance as described in these drawings for all installed trees, shrubs, perennials, turf and seeding during the warranty period.

1 GENERAL LANDSCAPE NOTES

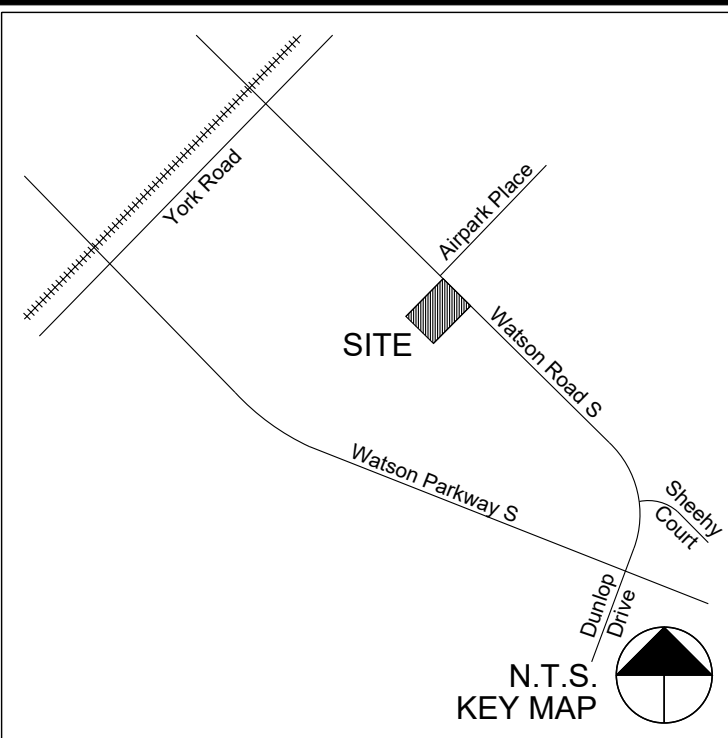
- Perform following maintenance operations from time of planting trees, shrubs, and perennials to end of warranty period two (2) years following substantial performance of the work.
 - Water to maintain soil moisture conditions for optimum establishment, growth and health of plant material without causing erosion. In a typical loam soil, optimum soil moisture in planting beds at root depth is 65% of field capacity. Guidelines during a typical growing season are as follows:
 - Deep root water newly planted plants once per week for the first three weeks, such that the water penetrates to a minimum depth of 300mm.
 - Deep root or surface water trees and shrubs a minimum of every ten (10) days between May 15 and September 15.
 - Deep root or surface water trees and shrubs a minimum of every twenty-one (21) days between September 15 and freeze up.
 - Water evergreen plants thoroughly in late fall prior to freeze-up to saturate soil around root system.
 - Soil moisture to be monitored throughout the growing season:
 - Watering schedule to be increased when plant materials are reaching the permanent wilting point.
 - Watering schedule to be reduced when a sufficient volume of rainfall has penetrated the soil fully as required.
 - Replace or respread damaged, missing or disturbed mulch.
 - If required to control insects, fungus and disease, use appropriate control methods in accordance with Federal, Provincial and Municipal regulations. Obtain product approval from Consultant prior to application.
 - Control outbreaks of perennial weeds as directed by Consultant, and annual weeds by mechanical or chemical means utilizing acceptable integrated pest management practices to meet acceptance/success targets.
 - If chemical means are used, comply with all municipal, provincial, and federal legislation and regulations.
 - Remove dead or broken branches from plant material using clean sharp horticultural tools using current arboricultural practices.
 - Keep trunk protection and guy wires in proper repair and adjustment.
 - Provide adequate protection from winter, wind and rodent damage.
 - Remove and replace dead plants and plants not in healthy growing condition. Make replacements in same manner as specified for original plantings, unless otherwise directed by Consultant.
 - Remove trunk protection, tree supports and level watering saucers at end of warranty period, unless otherwise directed by Consultant.
- After establishment period is complete and sod is accepted, the Owner shall retain the installing Landscape Contractor, a third-party Landscape Maintenance Contractor, or perform the following maintenance work to end of warranty period two (2) years following substantial performance of the work:
 - Maintenance Level 3 "Moderate" in accordance with the Canadian Landscape Standard. The main objective is a generally neat, moderately groomed appearance, with some tolerance for the effects of "wear and tear", moderate traffic and natural processes.
 - Mow turf to a height of 75-100mm (3"-4"). Mowing should be performed as necessary to avoid the removal of any more than one third of the grass blade length at any one time.
 - Supplemental watering shall be carried out when required and with sufficient quantities of water to prevent turf and underlying soil from drying out.
 - If required to control insects, fungus and disease, use appropriate control methods in accordance with Federal, Provincial and Municipal regulations. Obtain product approval from Consultant prior to application.
 - Control outbreaks of perennial weeds and annual weeds by mechanical or chemical means utilizing acceptable integrated pest management practices to meet acceptance/success targets.
 - If chemical means are used, comply with all municipal, provincial, and federal legislation and regulations.
 - Submit monthly written reports in during the growing season (April - September) to Consultant identifying:
 - Maintenance work carried out.
 - Watering method, quantity of water used, water source.
 - General development and condition of plant material.
 - Preventative or corrective measures required which are outside Contractor's responsibility.

2 GENERAL LANDSCAPE MAINTENANCE NOTES



PLANT LIST

KEY	QTY	BOTANICAL NAME	COMMON NAME	SIZE	TYPE	REMARKS
TREES						
CO	3	Celtis occidentalis	Common Hackberry	60 mm Caliper	Wire Basket	11 Meters On Center Spacing
PG	3	Picea glauca	White Spruce	180 cm Height	Wire Basket	4 Meters On Center Spacing
	6	TOTAL TREES				
SHRUBS						
Am	16	Aronia melanocarpa 'Lowscape Mound'	Lowscape Black Chokeberry	50 cm Height	3 Gallon Potted	0.6 Meters On Center Spacing
DI	32	Diervilla lonicera	Bush Honeysuckle	50 cm Height	3 Gallon Potted	1.0 Meter On Center Spacing
Iv	8	Ilex verticillata	Winterberry	50 cm Height	3 Gallon Potted	1.5 Meters On Center Spacing 6 Female & 2 Male Plants
Js	19	Juniperus sabina	Savin Juniper	50 cm Spread	5 Gallon Potted	1.0 Meter On Center Spacing
Ra	29	Rhus aromatica 'Gro-low'	Gro-low Fragrant Sumac	50 cm Height	3 Gallon Potted	1.0 Meter On Center Spacing
	104	TOTAL SHRUBS				
ORNAMENTAL GRASSES AND PERENNIALS						
cak	10	Calamagrostis 'Karl Forester'	Feather Reed Grass	-	3 Gallon Potted	0.6 Meters On Center Spacing
	10	TOTAL ORNAMENTAL GRASSES AND PERENNIALS				



LEGEND:

- EXISTING TREE TO REMAIN: ILLUSTRATES APPROXIMATE POTENTIAL ROOTING AREA (PRA) LOCATIONS AND TREE DATA COLLECTED BY AN ABOUD & ASSOCIATES ISA CERTIFIED ARBORIST ON JUNE 22, 2022. REFER TO DRAWING TP-1 FOR TREE INVENTORY, PROTECTION AND MITIGATION MEASURES REQUIRED TO BE COMPLETED BY CONTRACTOR.
- PROPOSED DECIDUOUS TREES IN CONTINUOUSLY MULCHED BEDS
- PROPOSED CONIFEROUS TREES IN CONTINUOUSLY MULCHED BEDS
- PROPOSED DECIDUOUS SHRUBS IN CONTINUOUSLY MULCHED BEDS
- PROPOSED CONIFEROUS SHRUBS IN CONTINUOUSLY MULCHED BEDS
- PROPOSED ORNAMENTAL GRASSES IN CONTINUOUSLY MULCHED BEDS
- PROPOSED SOD: BLUEGRASS/FINE FESCUE MIX NO.3 NURSERY SOD COMPLETE WITH 15MM DEPTH TOPSOIL
- PROPOSED WOOD PRIVACY FENCE
- PROPERTY BOUNDARY
- PLANT KEY: QTY, SPE

RESTORE DISTURBED SOILS IN MUNICIPAL RIGHT OF WAY WITH BLUEGRASS/FINE FESCUE MIX NO. 1 NURSERY SOD (SP-74, OPSS.MUNI 803) C/W 150MM DEPTH TOPSOIL (SS-20, SP-73, OPSS.MUNI 802) IN ACCORDANCE WITH APPLICABLE CITY OF GUELPH AND ONTARIO PROVINCIAL STANDARDS

GRADING AND SERVICING SHOWN ON THIS PLAN FOR COORDINATION ONLY. DO NOT USE THIS PLAN FOR CONSTRUCTION OF GRADING AND SERVICING ITEMS.

No.	Description	By	Date
3	REISSUED FOR SITE PLAN APPROVAL	MGN	14 APR-23
2	REISSUED FOR SITE PLAN APPROVAL	MGN	21 FEB-23
1	ISSUED FOR SITE PLAN APPROVAL	MGN	29 JUN-22
0	ISSUED FOR COORDINATION	MGN	22 JUN-22

REVISIONS: All previous issues of this drawing are superseded.

ABOUD & ASSOCIATES INC.
 Consulting Arborists • Ecologists • Landscape Architects
 3-8 Edinburgh Road South, Guelph, Ontario, N1H 5N8 • 519.822.6839 • www.aboudandco.com

LANDSCAPE PLAN

Project:
INDUSTRIAL MALL ADDITION
 111 WATSON ROAD SOUTH, GUELPH
 KRANER ELECTRICAL LTD.

Date: JUNE 2022 Designer: JL
 Project: A22-127A Drawn: JL
 Scale: 1:250 Checked: MGN

City Site Plan No. **SP** Drawing No. **LP-1**

E:\DATA\15-044_P\PROJECT\2022\A22-127A_111 WATSON ROAD SOUTH\15-044_P\2022\06-23-23\15-044_P-23-06-23.dwg
 PLOT DATE: 2023-06-23 10:12 AM
 PLOT BY: MGN

- Plant Characteristics, Rootballs, Rootball Standards including minimum rootball diameters specified on these plans are to be in accordance with the Canadian Nursery Landscape Association Canadian Standards for Nursery Stock, current edition.
- Planting shall only be performed when weather and soil conditions are suitable for planting the materials specified in accordance with locally accepted practice. Install plant materials during the planting time as described below unless otherwise approved in writing by Landscape Architect. In the event that the Contractor request planting outside the dates of the planting season, approval of the request does not change the requirements of the warranty.
 - Deciduous Trees: April 1 - June 30 and September 1 - November 15
 - Deciduous Shrubs: April 1 - June 30 and September 1 - November 15
 - Perennials and Groundcover: April 1 - June 30 and September 1 - November 15
 - Evergreen Trees and Shrubs: March 15 - June 30 and September 1 - November 15
- Transportation of plants should be restricted to closed vans or trucks covered with mesh tarpaulin or, similar material, to protect the leaves or needles from windburn or desiccation. This may be supplemented by spraying the foliage with an antidesiccant prior to shipping.
- Plant material shall not be dropped or handled roughly.
- Protect plant material from frost, excessive heat, wind and sun following delivery.
- Immediately store and protect plant material, which will not be installed within 1 hour after arrival at site in storage location, approved by the Landscape Architect.
- Protect stored plant material from frost, wind and sun and as follows: For pots and containers, maintain moisture level in containers.
- For balled and burlapped and wire basket root balls, place to protect branches from damage. Maintain moisture level in root zones.
- Topsail or plantings shall not be placed or installed when in a frozen condition, under adverse field conditions such as high wind, frozen soil or soil covered with snow, ice, or standing water.
- The Landscape Architect and Municipal Staff has the right to reject any and all plant material that does not conform to the requirements of this specification at any time regardless of any previous approval.
- When a plant has been rejected, immediately remove it from the area of the Work and replace it with a plant of the required species, size and quality at the earliest planting period consistent with these specifications. Replacement plant material shall meet all the requirements of this specification. Rejected plants shall be replaced at no cost to the Owner.
- Acceptance shall not be given for the planting Work until all plants rejected during the course of the Work are replaced.
- Any plant that has the following characteristics shall be cause for rejection:
 - Only nursery grown plants will be accepted.
 - Any plant that has a canopy with 25% or more dead or removed limbs.
 - Evidence of damage to plant material, which diminishes the aesthetic character/form, biological integrity, or structural integrity of the plant or group of plants.
 - Evidence of improper digging; inadequate protection following digging; carelessness while in transit; evidence of desiccation or wind-related damage; cold damage; improper handling or storage; root zones that have dried to the point of leaf wilt; cracked, loose, damaged or distorted root balls.
 - Plants with undersized root balls or containers, kinked or girdling roots, matted roots on the top, and edges of the container, excessive surface adventitious roots, root balls and containers with no structural roots in the top 75mm of the soil.
 - Plants balled with synthetic, treated or non-biodegradable fabrics.
 - Any tree that is of a species that characteristically has a dominant central leader, and if the leader is dead or removed, the tree will not have a form consistent with the species.
 - Any tree that has open wounds (not completely healed over) that penetrates the cambium into the wood on trunks or major limbs the removal of which would result in the loss of 25% or more of the structure and form of the tree
- Topsail shall be loose, friable, fertile loamy material that is free from subsoil, weeds, roots, vegetation and other deleterious material greater than 25mm diameter in the greatest dimension. The topsail shall also be certified by an OMAFRA Accredited Soil Testing Laboratory in Ontario to meet the following requirements:
 - Topsail texture shall be loam, sandy loam to wit:
 - Sand content between 20-75%
 - Silt content between 5-30%
 - Clay content between 5-30%
 - Herbicides - No detectable levels
 - Organic Matter content between 4-15%
 - Phosphorus 10-60 (ppm)
 - Potassium 80-259 (ppm)
 - Calcium 1000-4000 (ppm)
 - Magnesium 100-300 (ppm)
 - Chloride <100 (ppm)
 - Sodium <200 (ppm)
 - Sodium Adsorption Ratio <15
 - Shall not have contaminants that adversely affect plant growth.
 - The cost to amend existing on-site topsail to be reused shall be paid for by the Owner.
 - The cost to amend imported topsail supplied by the Contractor to meet Agronomist written recommendations shall be paid for by the Contractor.
- Water shall not have contaminants or impurities that would adversely affect the germination and growth of vegetation. Proposed plants which come over or under any utility shall be relocated by the Contractor for review by the Landscape Architect, to the satisfaction of the utility provider.
- Mulch shall be shredded hardwood or softwood as specified in the planting details. Free from roots, leaves, twigs, debris, stones, fungus, crabgrass rhizomes, or any material detrimental to plant growth. Material shall be mulching grade, uniform in size and foreign matter. Mulch that has become saturated with water and presents an anaerobic odor shall be rejected.
- Anti-Desiccant (if used) shall be emulsion type, film-forming agent similar to Dowax by Dow Chemical Company, or Wilt-Pruf by Nursery Specialty Products, Inc., Croton Falls, New York, designed to permit transpiration but retard excessive loss of moisture from plants. Deliver in manufacturer's fully identified containers and use in accordance with manufacturer's instructions. Submit manufacturer's product data for approval.
- Contractor to examine the surface grades and soil conditions for any circumstances that might be detrimental to plant growth, such as deposits of construction-related waste or soil contamination, storage of material or equipment, soil compaction or poor drainage. Contractor to examine the grading, verify all elevations, and notify the Landscape Architect in writing of any unsatisfactory conditions.
- Contractor to inspect each plant after delivery and prior to installation for damage of other characteristics that may cause rejection of the plant.
- Excavate pits, beds, and trenches with vertical sides and with bottom of excavation slightly raised at center to provide proper drainage. When conditions detrimental to plant growth are encountered, such as rubble fill, adverse drainage conditions, or obstructions, notify the Consultant before planting. Dispose of subsoil removed from planting excavations. Do not mix with planting soil or use as backfill. Plants to be planted in prepared planting soil may utilize the soil removed from the planting hole as backfill around the root ball.
- Set edge of the root ball at the elevation of the proposed finish. Consult the grading plan and utilize a builder's level or transit to determine the grade at the tree grade. For trees on sloped surfaces, set the edge of the root ball at the average grade around the tree. Set the plant plumb and in the location indicated on the plan. The root flare and tree graft, if applicable, shall be visible at the top of the root ball, above the grade. Do not place soil on top of the root ball and remove soil pushed above root flare by mechanical potting/balled & burlapping process during transplantation by the nursery.
- When set, brace root ball by tamping backfilled soil around the lower portion of the root ball. Place additional backfill around base and sides of ball in 150mm lifts. Work each lift to settle backfill and eliminate voids and air pockets. When excavation is approximately two-thirds full, water thoroughly before placing remainder of backfill. Ropes or strings on top of ball shall be cut and removed. Burlap or cloth wrapping shall be cut and removed from the top of the root ball. The top horizontal ring of support wire baskets shall be cut in four places and the top half of the wire basket folded down into the soil.
- Where staking is required, calliper trees shall be supported by wooden stakes driven outside the ball in line with the direction of the prevailing wind. Tree tie type and installation method to be per planting detail. Stakes shall be 50mm x 50mm hardwood stakes free of knots and of lengths appropriate to the size plant required for to adequately support the plant.
- Tree Guard type and installation per planting detail.
- Maintain all trees and shrubs in a plumb position throughout the warranty period. Straighten all trees including those not staked. Plants to be straightened shall be excavated and the root ball moved to a plumb position, and then re-backfilled. Do not straighten plants by pulling the trunk with guys.
- Do not apply any fertilizer to plantings during the first year after transplanting, unless soil tests determine that fertilizer or other chemical additives are required. If required, fertilizers shall be applied according to the manufacturer's instructions and standard horticultural practices.
- Pruning shall be done with clean, sharp, rust-free tools. Cuts shall be made flush, leaving no stubs as per ANSI A 300 - current edition. No tree paint or sealants shall be used.
- Dead wood, suckers, and broken and badly bruised branches shall be removed. Do not prune plant material that has been severely damaged due to transit or handling until viewed by the Landscape Architect.
- Pruning of broken or dead branches shall be done after planting. Form-corrective pruning may occur when tree has hardened until bud-break in the spring. If corrective pruning dates fall outside the construction schedule, it shall remain a punch list (warranty) item. The Contractor shall be responsible for completing this off-season punch list (warranty) item.
- Mulch top of root balls and planting beds, covering the entire planting bed area. Leaving a mulch free zone at stem/trunk as indicated in planting details.
- Water each plant on the day of installation to saturate the soil around the roots and wash the soil into the root zone. After the soil has drained, reset any settled plants or grades around the plant, adding soil if required.

1 TREE, SHRUB, AND PERENNIAL INSTALLATION NOTES

LP-2

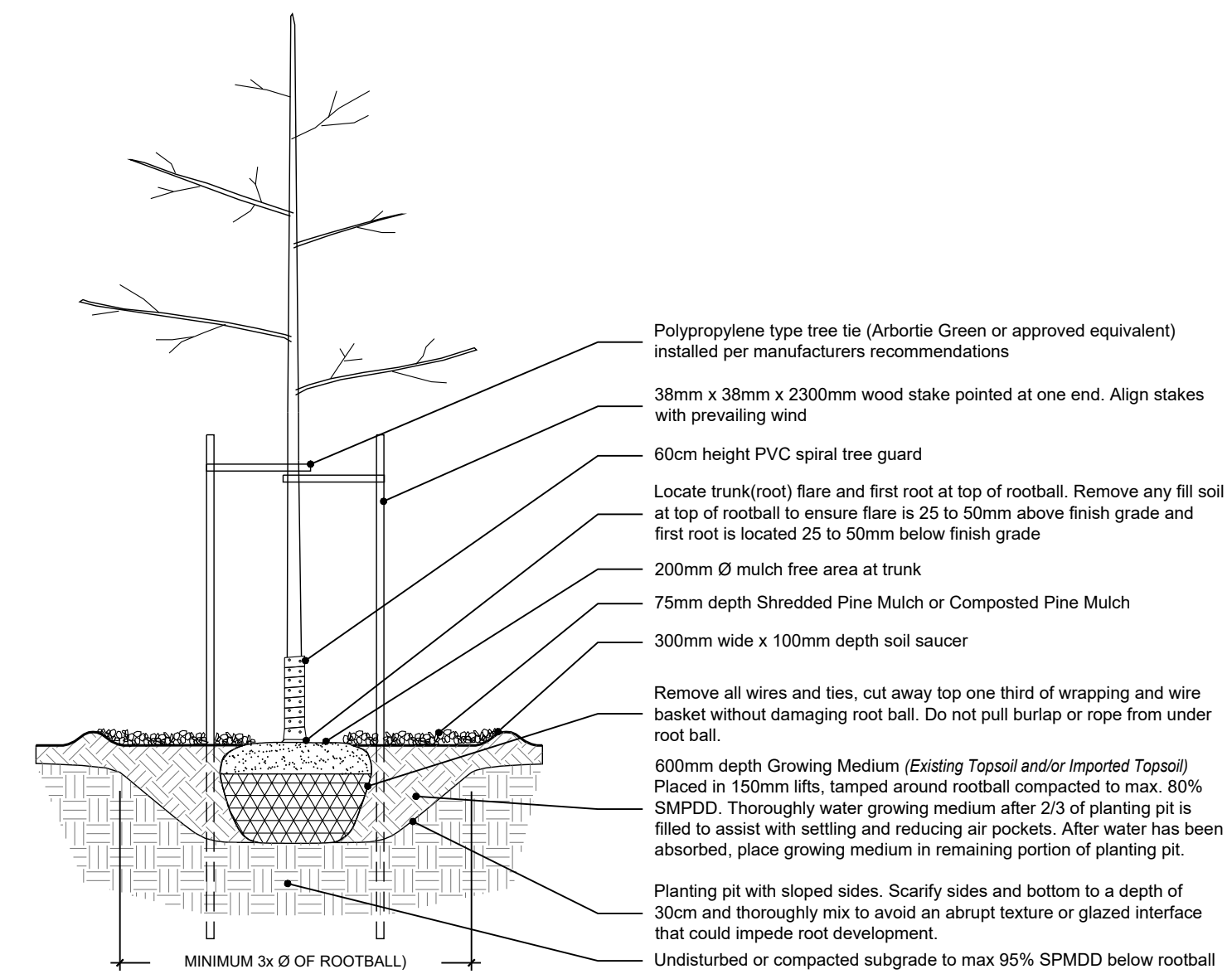
2 SOD INSTALLATION AND ESTABLISHMENT NOTES

LP-2

- Sod shall be a No. 3 Commercial Grade Turfgrass Nursery Sod, Kentucky Bluegrass/Fine Fescue according to the Classifications and Use of Turfgrass Sod for Ontario.
- Sod shall be seeded and established in nursery sod fields as a turfgrass sod.
 - Sod shall be uniform in texture, and in good healthy condition with no sign of decay.
 - There shall be no more than 5 broadleaf weeds per 40 m² of sod and up to 20% non-specified grass seed.
 - Sod shall be of sufficient density that no surface soil is visible. The grass height shall be 30 mm minimum and 70 mm maximum.
- The soil portion of the sod shall be a good mineral type soil with a thickness of 10 mm minimum and 15 mm maximum.
- Each sod piece shall be well permeated with roots. Individual sod pieces shall be in such condition so that each may be lifted, rolled, transported, and placed without breaking or tearing and without loss of soil under normal handling conditions.
- Sod shall contain sufficient moisture to maintain its vitality during transportation and placement.
- Topsail shall be loose, friable, fertile loamy material that is free from subsoil, weeds, roots, vegetation and other deleterious material greater than 25mm diameter in the greatest dimension. The topsail shall also be certified by an OMAFRA Accredited Soil Testing Laboratory in Ontario to meet the following requirements:
 - Topsail texture shall be loam, sandy loam to wit:
 - Sand content between 20-75%
 - Silt content between 5-30%
 - Clay content between 5-30%
 - Herbicides - No detectable levels
 - Organic Matter content between 4-15%
 - Phosphorus 10-60 (ppm)
 - Potassium 80-259 (ppm)
 - Calcium 1000-4000 (ppm)
 - Magnesium 100-300 (ppm)
 - Chloride <100 (ppm)
 - Sodium <200 (ppm)
 - Sodium Adsorption Ratio <15
 - Shall not have contaminants that adversely affect plant growth.
 - The cost to amend existing on-site topsail to be reused shall be paid for by the Owner.
 - The cost to amend imported topsail supplied by the Contractor to meet Agronomist written recommendations shall be paid for by the Contractor.
- Water shall not have contaminants or impurities that would adversely affect the germination and growth of vegetation.
- Sod shall not be separated from its mineral soil base and not damaged during transportation, handling, and placement.
- Surface litter and debris shall be removed immediately prior to topsail or sod placement.
- Topsail or sod shall not be placed when in a frozen condition, under adverse field conditions such as high wind, frozen soil or soil covered with snow, ice, or standing water.
- Topsail shall be placed, spread and leveled as required to match grades as indicated in the grading drawings prepared by the Project Civil Engineer and to allow for positive drainage away from pathways and structures.
- Minimum consistent depth for topsail in areas to be sodded after settlement shall be 200mm deep.
- At the time of sodding, all surface areas designated for sodding shall be free of erosion and shall have a fine graded uniform surface. The surface shall be uniformly cultivated to a minimum depth of 50 mm and shall not have surface materials greater than 25 mm in size, such as stones and clods and weeds or other unwanted vegetation.
- Sod shall be placed in locations and as specified in the landscape drawings.
 - VOIDS shall not be left between the soil portion of the sod and the underlying ground surface.
 - Sod shall be securely placed lengthwise across the face of slopes and parallel to the centreline of ditches.
 - End joints of adjacent sod pieces shall be staggered.
 - The edges of adjacent sod pieces shall be placed tightly against one another without overlapping.
 - Sod shall be countersunk to existing grade level at all edges.
 - Butt joints will be used where new sod blends with existing grass; lap joints will not be permitted.
 - Joints shall be tamped to a uniform surface.
 - Where required, sod should be staked to the grade to avoid movement.
- Sod shall be maintained by the Contractor as part of base price during the establishment period (30 Days) following completion of placement. During this period, the placed sod shall be kept healthy, actively growing, and green in colour. This requirement shall be suspended during the winter dormant period defined as November 15 to April 15 inclusive. During the establishment period the Contractor will:
 - Install temporary barriers or signage to be maintained where required to protect newly established sod.
 - Water to maintain soil moisture conditions for optimum establishment, growth and health of plant material without causing erosion. In a typical loam soil, optimum soil moisture in planting beds at root depth is 65% of field capacity.
 - Mow to a height of 60mm (2.5") when turf reaches height of 60mm (3") at least twice during the establishment period.
 - If required to control insects, fungus and disease, use appropriate control methods in accordance with Federal, Provincial and Municipal regulations. Obtain product approval from Consultant prior to application.
 - Control outbreaks of perennial weeds and annual weeds by mechanical or chemical means utilizing acceptable integrated pest management practices to meet acceptance/success targets.
 - If chemical means are used, comply with all municipal, provincial, and federal legislation and regulations.

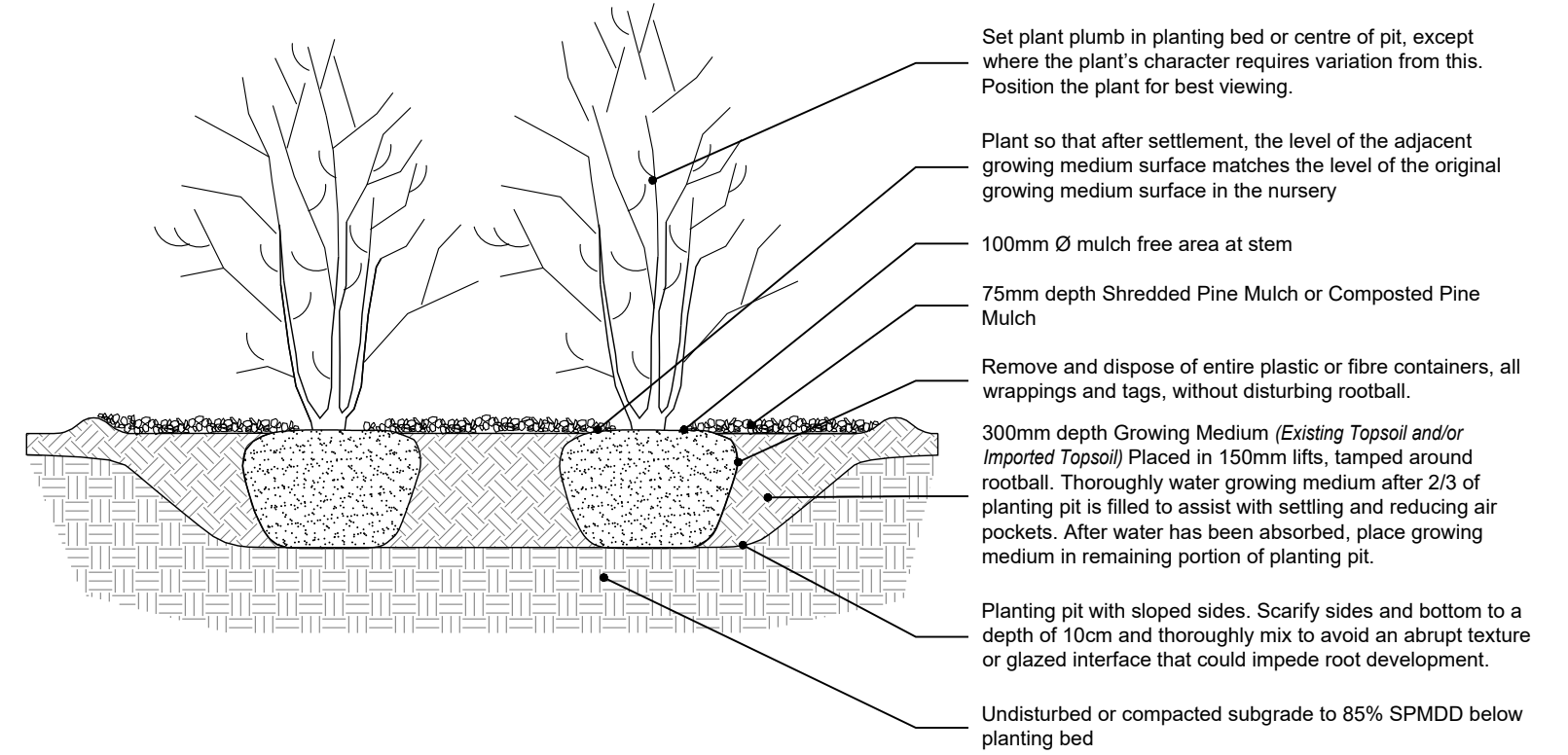
3 TYPICAL DECIDUOUS TREE PLANTING DETAIL

LP-2 N.T.S.



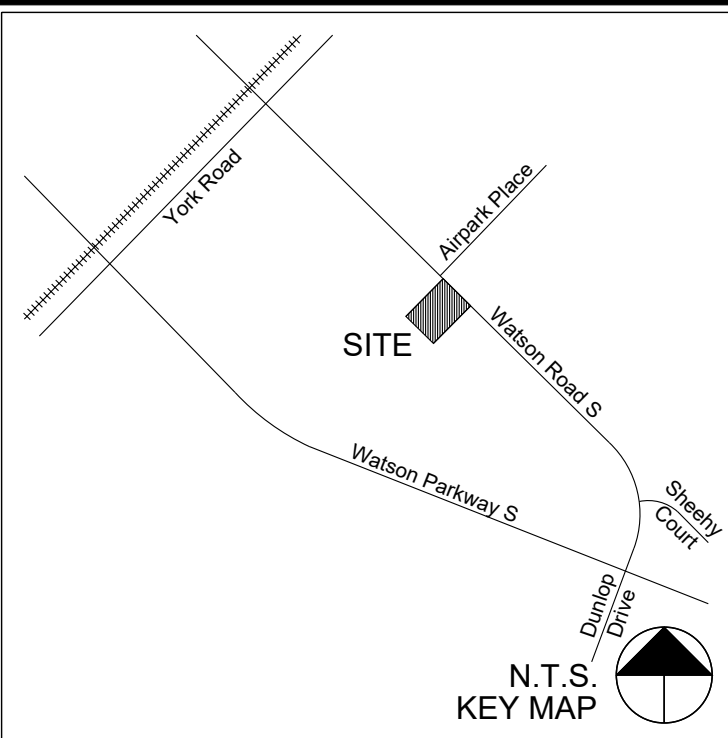
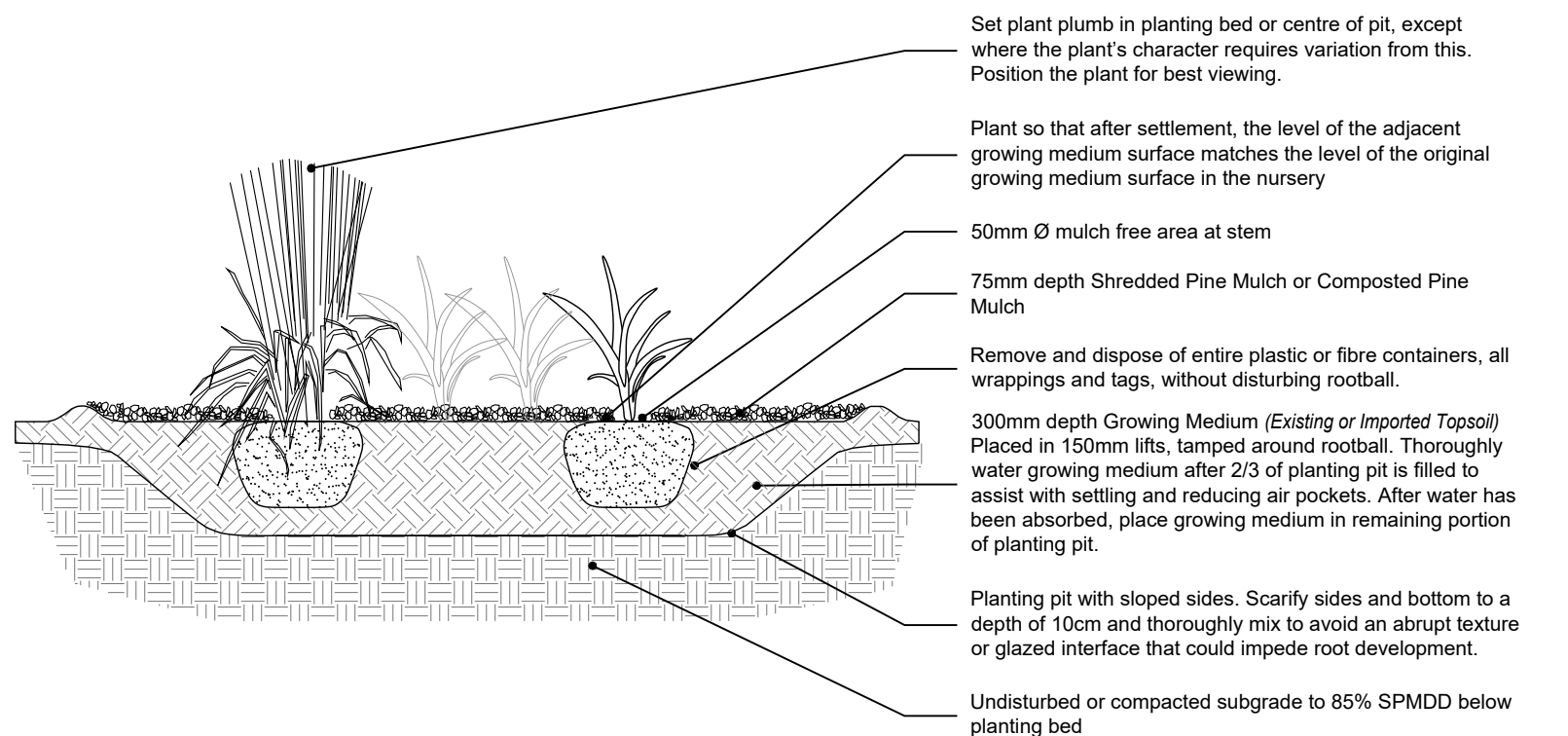
4 TYPICAL SHRUB PLANTING DETAIL - CONTINUOUS BED

LP-2 N.T.S.



5 TYPICAL PERENNIAL PLANTING DETAIL - CONTINUOUS BED

LP-2 N.T.S.



N.T.S. KEY MAP

LEGEND:

No.	Description	By	Date
3	REISSUED FOR SITE PLAN APPROVAL	MGN	14 APR-23
2	REISSUED FOR SITE PLAN APPROVAL	MGN	21 FEB-23
1	ISSUED FOR SITE PLAN APPROVAL	MGN	29 JUN-22
0	ISSUED FOR COORDINATION	MGN	22 JUN-22

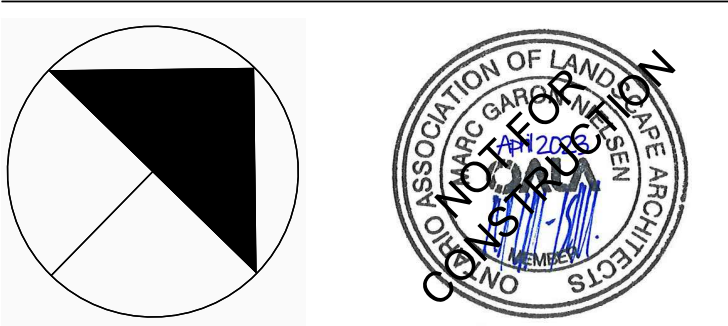
REVISIONS: All previous issues of this drawing are superseded

ABOUT & ASSOCIATES INC.
 Consulting Arborists • Ecologists • Landscape Architects
 3-3 Edinburg Road South, Guelph, Ontario, N1H 5N8 • 519 822 6839 • www.aboutandg.com

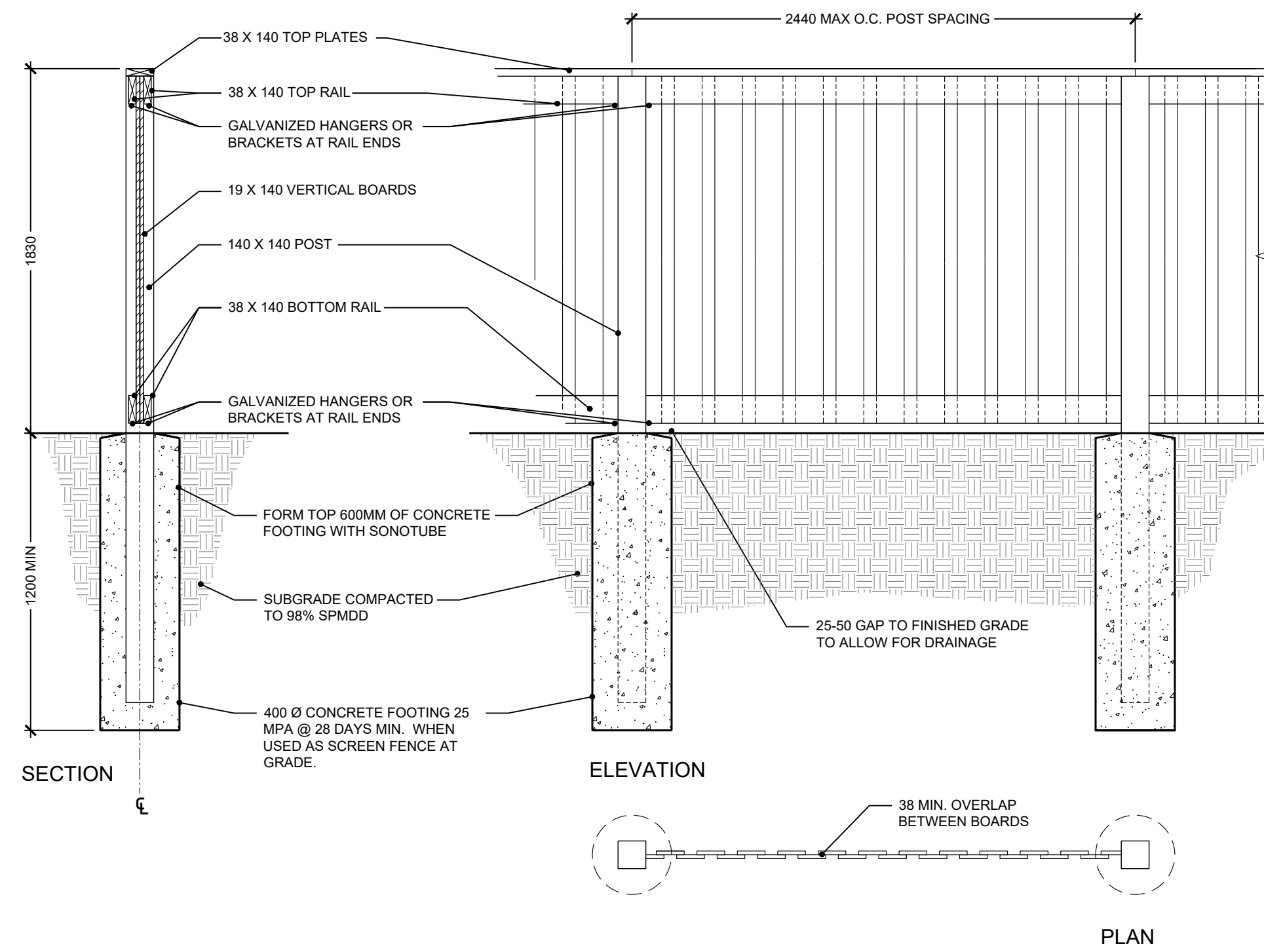
LANDSCAPE DETAILS & NOTES I

Project:
INDUSTRIAL MALL ADDITION
 111 WATSON ROAD SOUTH . GUELPH
 KRANER ELECTRICAL LTD.

Date: JUNE 2022 Designer: JL
 Project: AA22-127A Drawn: JL
 Scale: AS SHOWN Checked: MGN

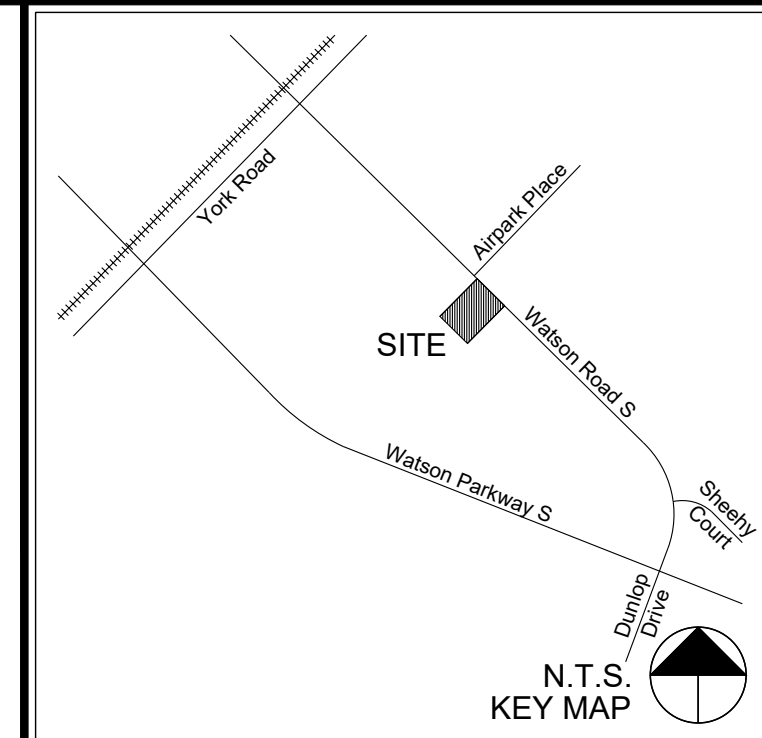


City Site Plan No. **SP** Drawing No. **LP-2**



- NOTES:
- STEP FENCING PANELS 50mm MIN AND 150mm MAX AT POSTS AS REQUIRED BY GRADE CONDITIONS.
 - ALL MATERIALS, COMPONENTS AND WORKMANSHIP TO CONFORM TO OBC AND LOCAL BY-LAWS.
 - ALL LUMBER SIZES ARE ACTUAL RATHER THAN NOMINAL.
 - ALL WOOD SHALL BEAR GRADING STAMP OF C.L.S. CERTIFIED AGENCY.
 - WARRANTY: THE FENCE SHALL BE GUARANTEED FOR THREE YEARS AS FOLLOWS: 5MM ON PLUMB OF POSTS AND LEVEL OF VERTICAL BOARDS. GAPS BETWEEN VERTICAL BOARDS SHALL NOT EXCEED 6MM. VERTICAL BOARDS SHALL BE TIGHT AND FREE OF RATTLING.
 - WOOD:
 - ALL WOOD SHALL BE PRESSURE TREATED SELECTED FOR GOOD APPEARANCE AND FREE OF WANE AND BARK POCKETS.
 - ALL TORN GRAIN AND SURFACE STAIN SHALL BE ELIMINATED BY SANDING OR PLANING
 - MEMBERS WITH HEAVY KNOTS AND/OR SAP STAIN SHALL BE WELL DISTRIBUTED THROUGHOUT THE INSTALLATION
 - MOISTURE CONTENT OF WOOD SHALL NOT EXCEED 20% AT TIME OF CONSTRUCTION
 - VERTICAL/HORIZONTAL BOARDS:
 - TO NLGA 204A OR BETTER "SELECT KNOTTY" GRADE
 - POSTS
 - TO NLGA 131B#1 STRUCTURAL POST AND TIMBER
 - SHALL BE PLUMB WITHIN 5MM ABOVE GRADE
 - FASTENERS
 - ALL FASTENERS INCLUDING ARDOX NAILS, SCREWS, BOLTS, NUTS, WASHERS AND BRACKETS SHALL BE HOT DIPPED GALVANIZED IN ACCORDANCE TO CSA STANDARD G164. SCREWS AND BOLTS SHALL CONFORM TO ASTM A307
 - COUNTER-SINK ALL LAG SCREWS AND BOLTS AND DRIVE ALL NAIL HEADS BELOW SURFACE OF WOOD.
 - ALL ARDOX NAILS OR SCREWS TO BE EVENLY SPACED AND SET NOT LESS THAN 25MM FROM EDGE OF ANY WOOD MEMBER.
 - UNLESS OTHERWISE INDICATED, NAILING REQUIREMENTS SHALL CONFORM TO ONTARIO BUILDING CODE DIVISION B PART 9 TABLE 9.23.3.4.

1 1.8M WOOD PRIVACY FENCE AT GRADE
LP-3 N.T.S.



LEGEND:

No.	Description	By	Date
3	REISSUED FOR SITE PLAN APPROVAL	MGN	14 APR-23
2	REISSUED FOR SITE PLAN APPROVAL	MGN	21 FEB-23
1	ISSUED FOR SITE PLAN APPROVAL	MGN	29 JUN-22
0	ISSUED FOR COORDINATION	MGN	22 JUN-22

REVISIONS: All previous issues of this drawing are superseded

500 SERIES

MBR500-S

Contractor to anchor bike rack to concrete slab with tamper proof stainless steel hardware.

MATERIALS: All parts are made from H.S. steel tube.
 FINISH: All steel components are protected with E-Coat rust proofing. The Maglin Powdercoat System provides a durable finish on all metal surfaces.
 INSTALLATION: The bike rack is delivered pre-assembled. It is available with either a surface mount or direct burial installation option.
 TO SPECIFY: Select MBR500-S
 Choose:
 - Powdercoat Color
 - Galvanized Finish
 - Surface Mount (MBR500-S-G)

DIMENSIONS:
 Height: 35" (889mm)
 Length: 19 1/4" (489mm)
 Weight: 13.27lbs (6.0kg)

T 800-718-9500
 F 977-280-9383
 WWW.MAGLIN.COM
 MAIL@MAGLIN.COM

All drawings, specifications, design and details on this page remain the property of Maglin Site Furniture Inc. and may not be used without Maglin authorization. Details and specifications may vary due to continuing improvements of our products.

2 TYPICAL BIKE RACK DETAIL
LP-3 N.T.S.

ABOUD & ASSOCIATES INC.
 Consulting Arborists • Ecologists • Landscape Architects
 3-5 Edinburgh Road South • Guelph • Ontario • N1H 5N8 • 519.822.6839 • www.aboudatg.com

Title:
LANDSCAPE DETAILS & NOTES II

Project:
INDUSTRIAL MALL ADDITION
 111 WATSON ROAD SOUTH • GUELPH
 KRANER ELECTRICAL LTD.

Date: JUNE 2022 Designer: JL
 Project: AA22-127A Drawn: JL
 Scale: AS SHOWN Checked: MGN

