

Attachment-2 Historical Images of the Albion Hotel

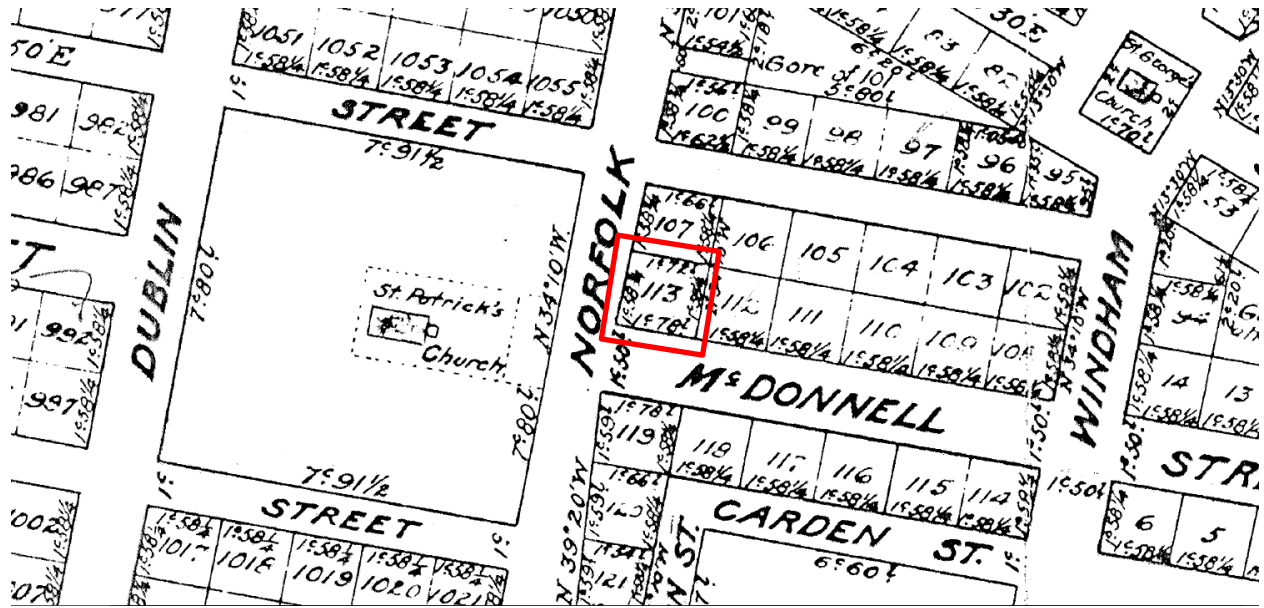


Figure 1 - Plan 8 showing Lot 113 (registered c. 1855, John McDonald – Provincial Survey)

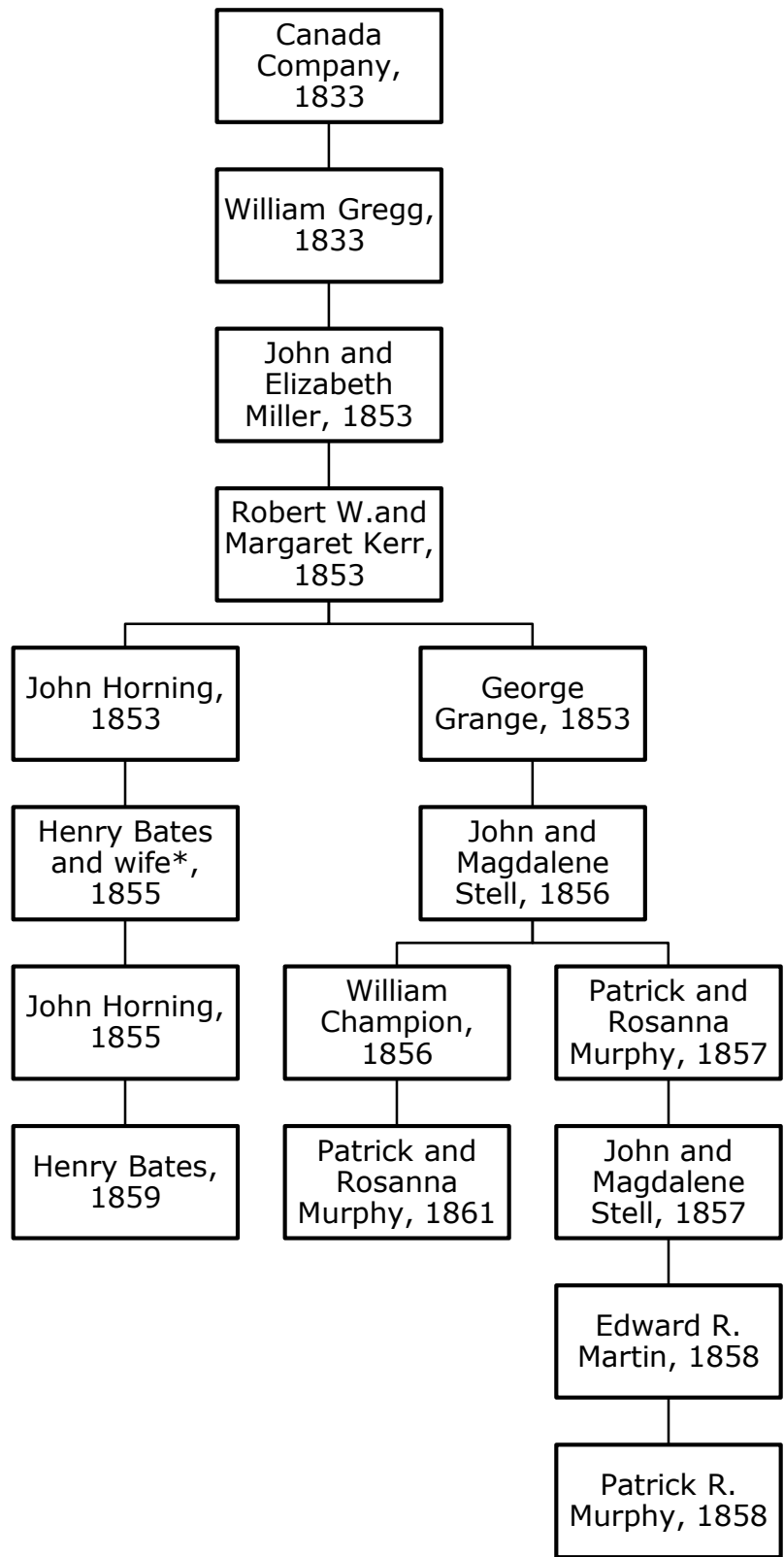


Figure 2 – Flow chart detailing the multiple owners of Lot 113 between 1833-1861, *the name of the wife of Henry Bates could not be ascertained with certainty.



Figure 4 – Bird's Eye View of 1872 Downtown Guelph illustrating the Albion Hotel (Guelph Civic Museum)



Figure 5 - Detail of Thomas W. Cooper's 1875 map of the Town of Guelph, the subject property indicated with a red polygon (Guelph Civic Museum)

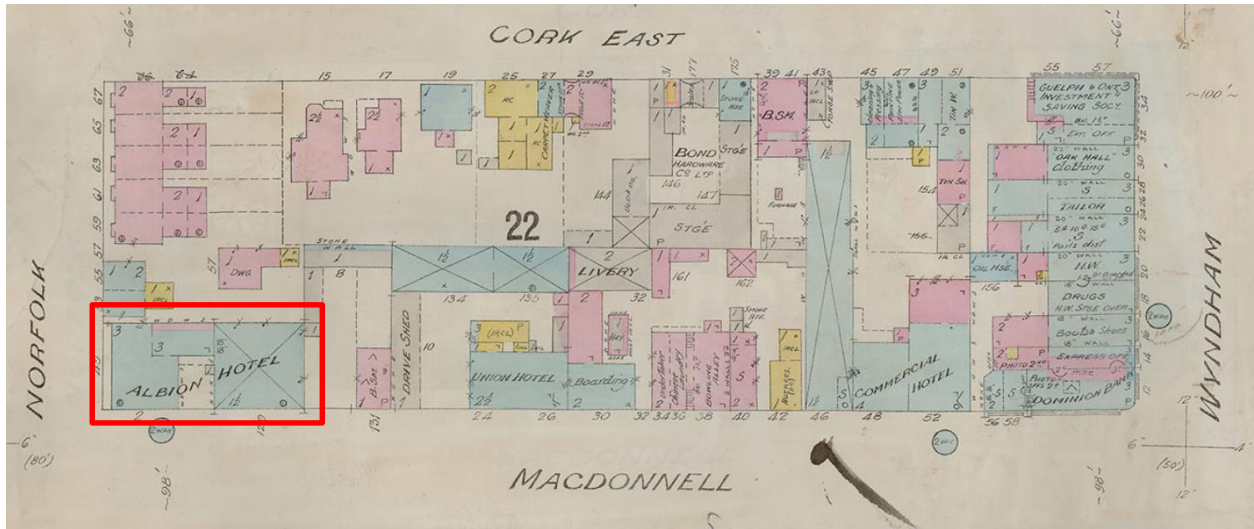


Figure 6 - Detail from Sheet 22 of the Fire Insurance Plan of Guelph, 1897 (revised 1916) (Guelph Civic Museum)

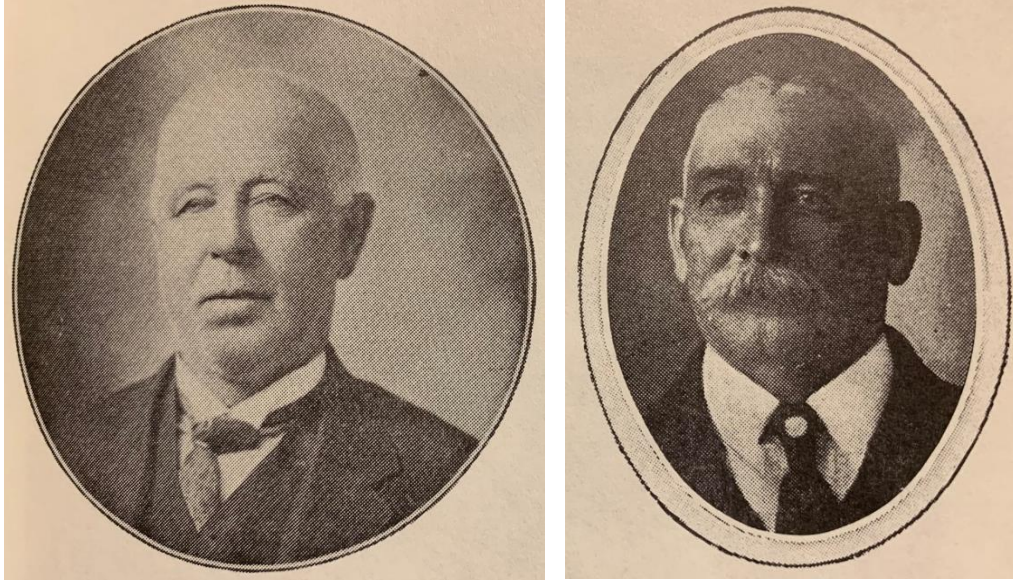


Figure 7 – Pictures of past proprietors of the Albion Hotel, Hugh Malone (left) and John McAteer (right) (DuCharme 1985)



Figure 8 – Picture of past owner and proprietor Mrs. Mary Thompson (DuCharme 1985)



Figure 9 – Black and white slide of group of men standing in front of the Albion Hotel, c. 1895 (Guelph Civic Museum 2009.32.2163)



Figure 10 – Black and white photo of the interior of the bar at the Albion Hotel, c. 1900 (Guelph Civic Museum 2014.84.342)



Figure 11 – Black and white slide of the Albion Hotel with striped awnings over each of the windows and a sign on the corner, c. 1917 (Guelph Civic Museum 2009.32.2161)



Figure 12 – Photo of Albion Hotel from around 1889, while Hugh Malone was proprietor (DuCharme 1985)



Figure 13 – Image of Simon Fagel, manager of the Albion Hotel, in front of the Albion Hotel with his horse "Albion Hal" (DuCharme 1985)

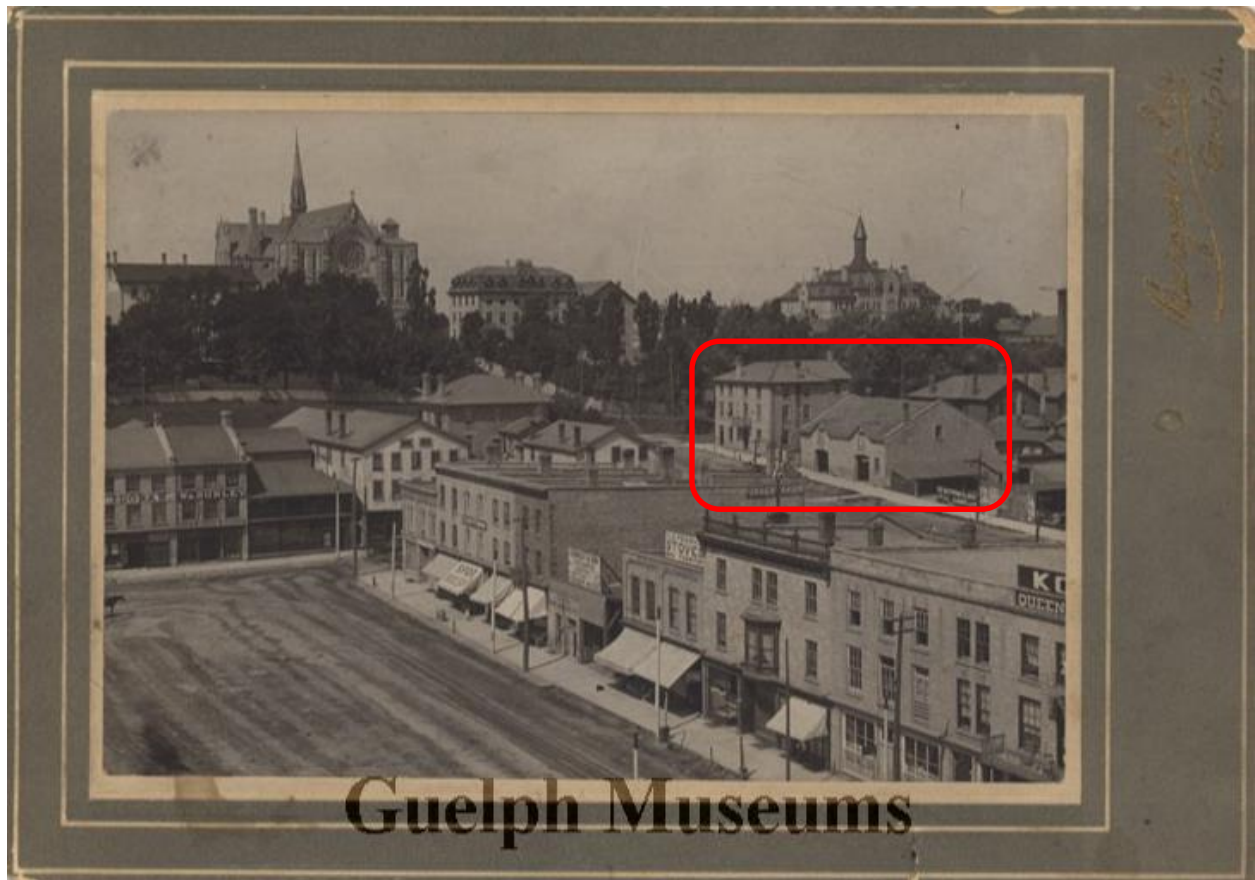


Figure 14 – View of Carden Street, facing northwest, showcasing the Albion Hotel with its associated horse stables, c. 1905 (Guelph Civic Museum 1980.114.37)

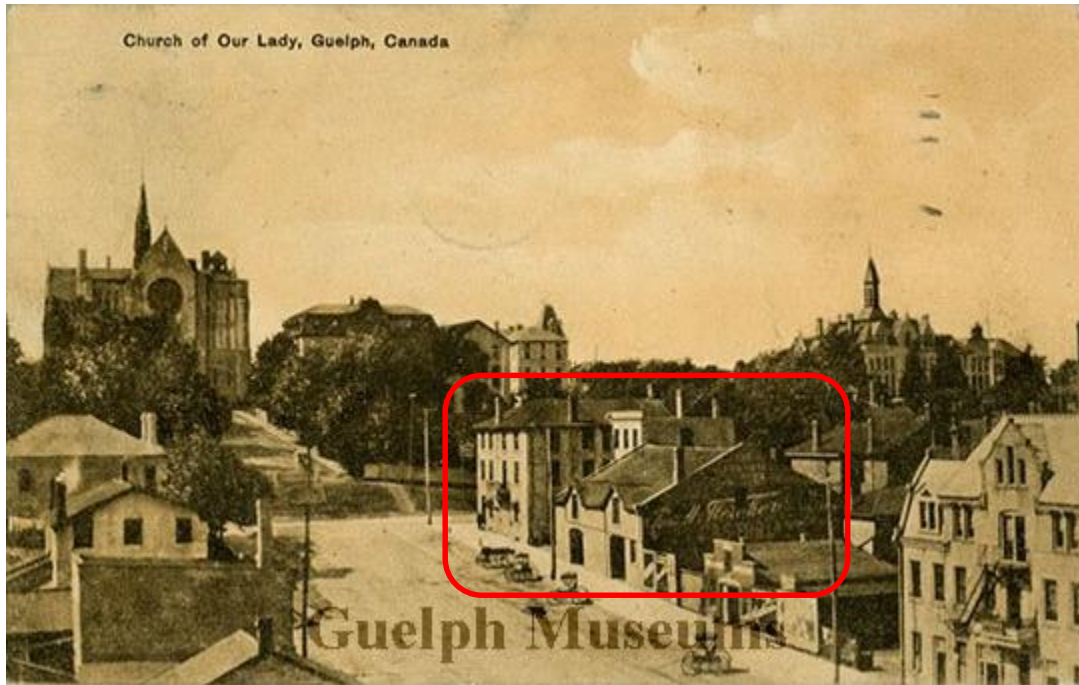


Figure 15 – Postcard of view of Macdonell Street showing the Basilica of Our Lady and the Albion Hotel, c. 1911 (Guelph Civic Museum 2020.45.1)

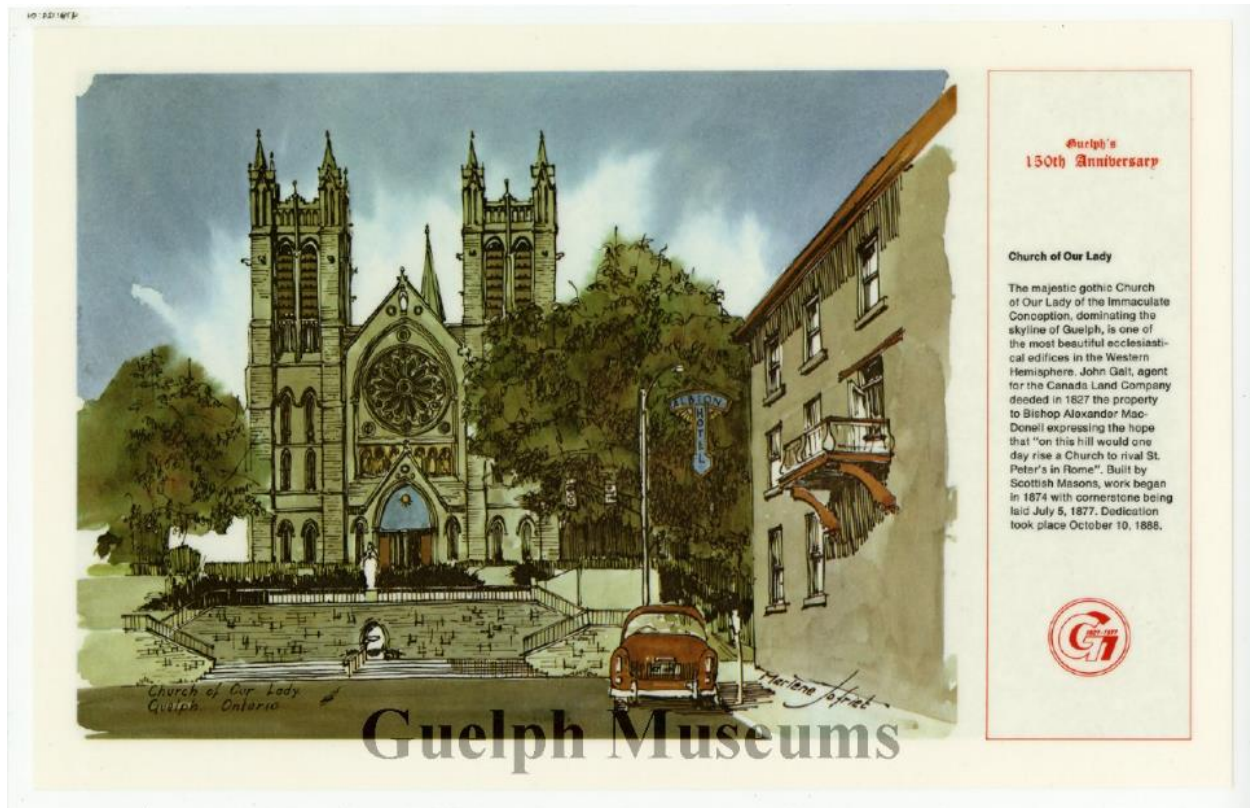


Figure 16 – Placemat illustrating view of Basilica of Our Lady with the Albion Hotel, including the sign on the corner, c. 1977 (Guelph Civic Museum 1978.129.1)



Figure 17 – Image of the Albion Hotel facing northwest with a banner celebrating its 140-year history, c. 1996 (Guelph Civic Museum 1980.22.24)