

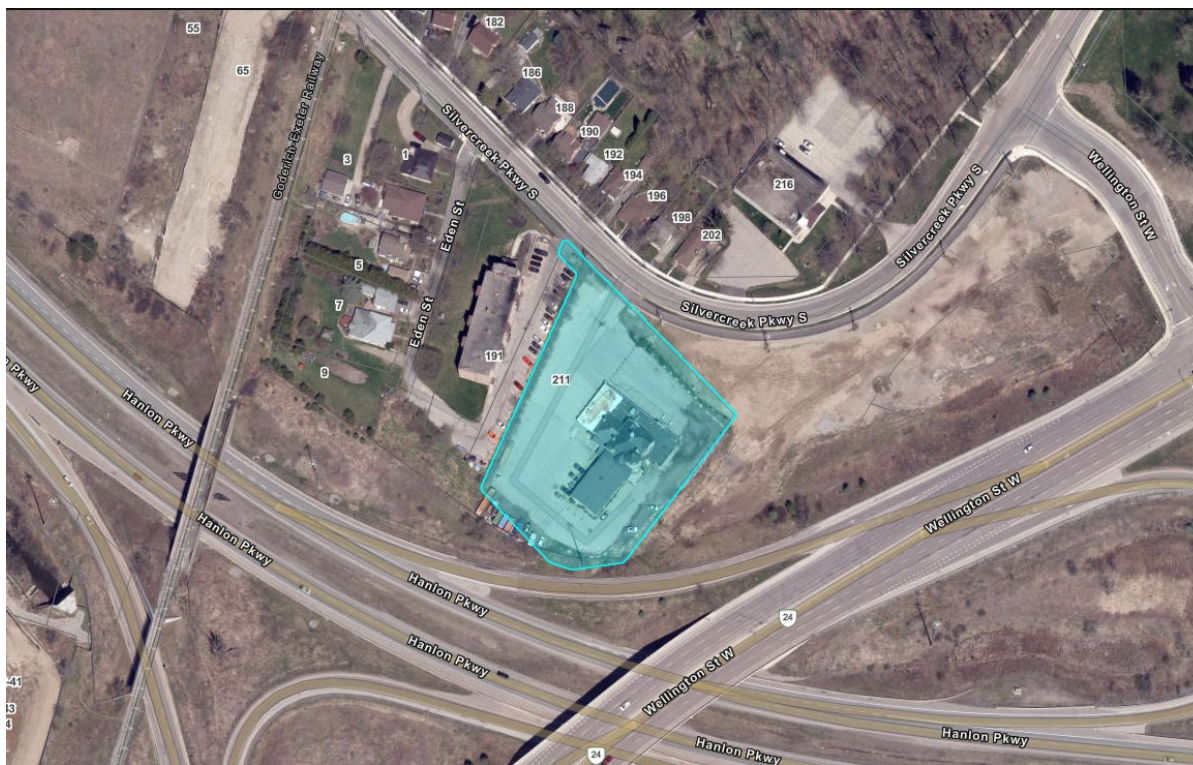
211 Silvercreek Parkway South: The Sleeman House

Cultural Heritage Evaluation Report

July 10, 2023

Presentation Outline

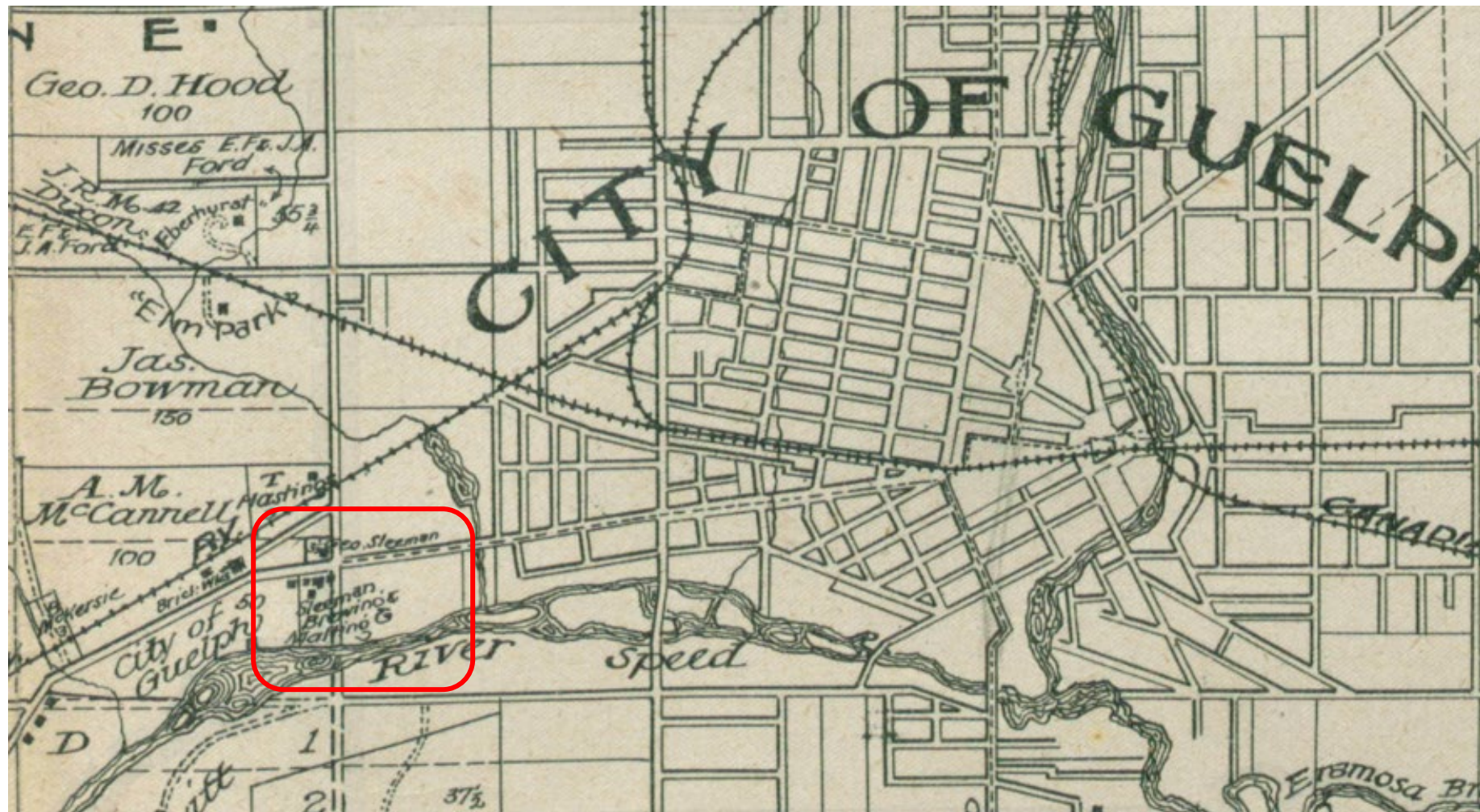
1. Results of Background Research
2. Statement of Significance
3. Next Steps
4. Questions



Township of Guelph Map, 1877

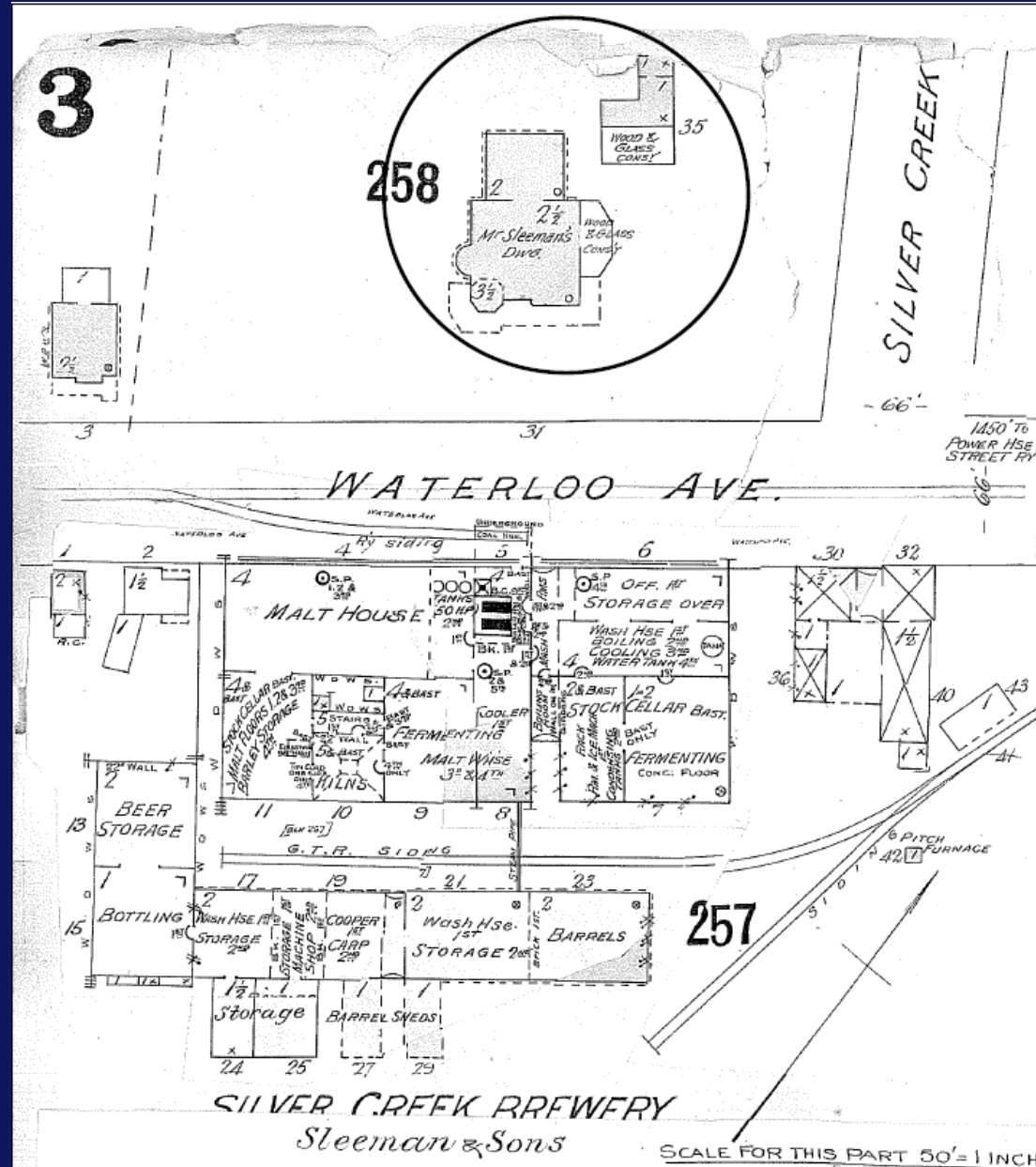


County of Wellington Historical Atlas, Guelph 1906



Fire Insurance Plan, 1897 (revised 1907)

Sheet 3



The Sleeman Family

George Sleeman, c. 1880

John W. Sleeman, c. 1995



Guelph Civic Museum 2009.32.951



Guelph Civic Museum 2013.37.13

The Sleeman Family (cont)

c. 1800



Wellington County Museum & Archives, 1952.312.3C

c. 1900



Wellington County Museum & Archives, A1952.312.3B

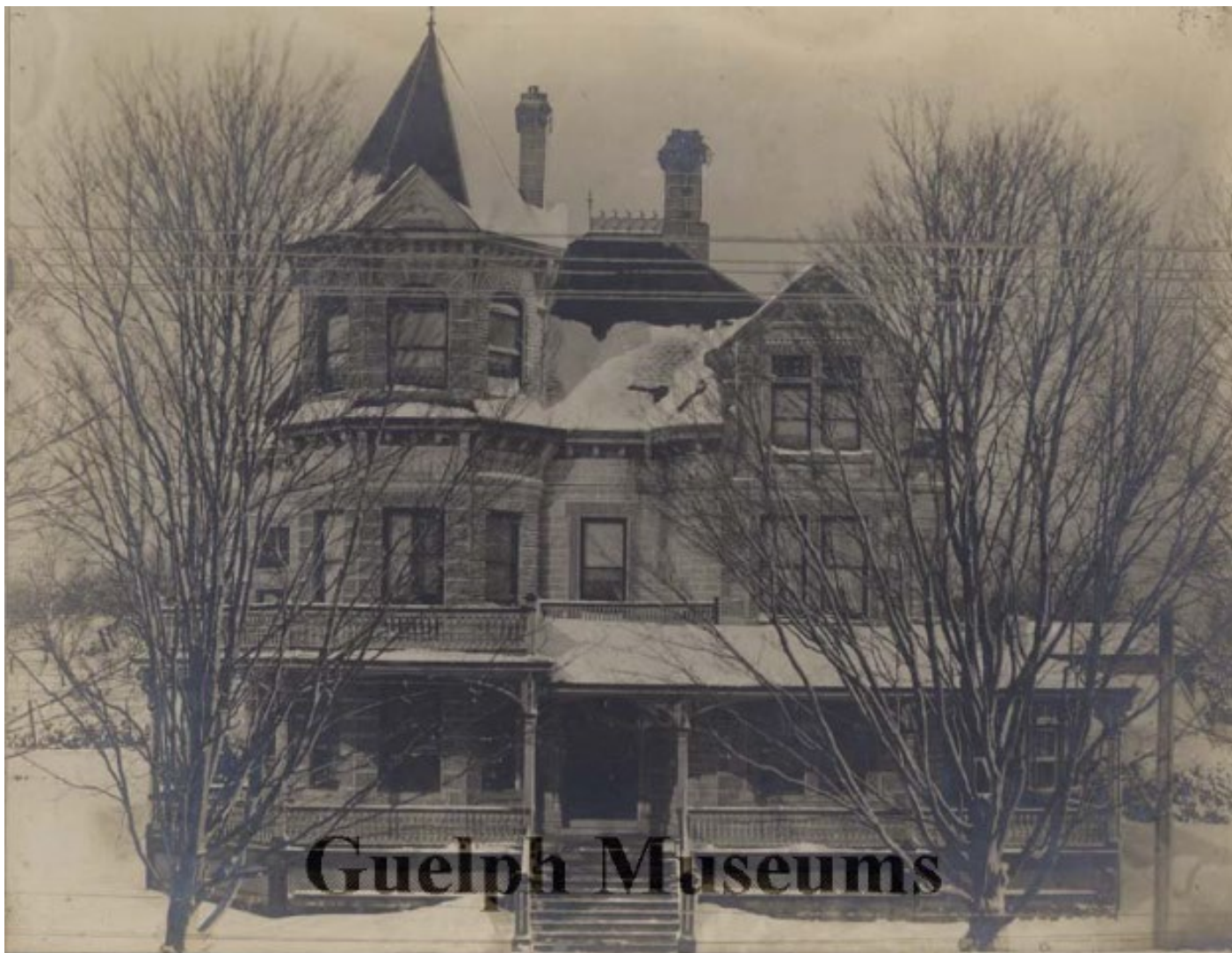
The Sleeman House, c. 1895



The Sleeman House, c. 1908



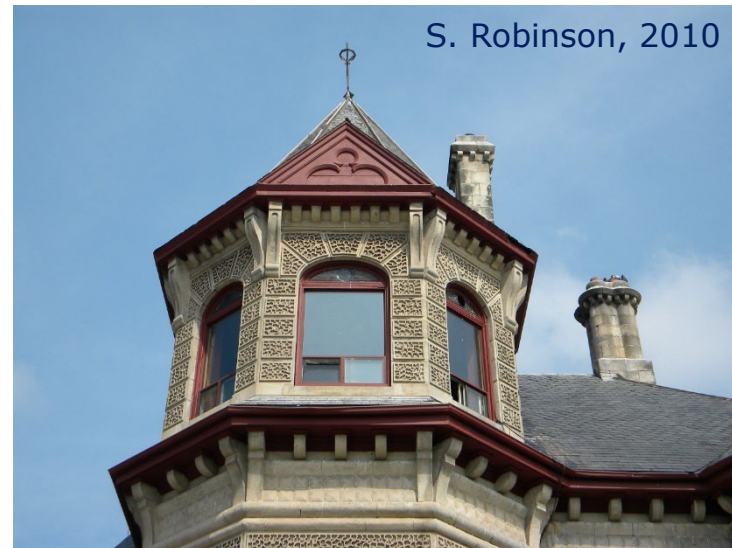
The Sleeman House, c. 1905-1915



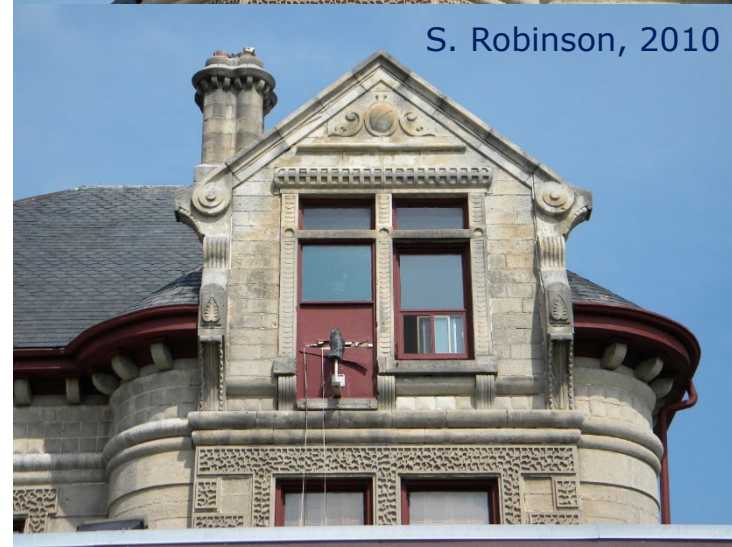
Current Photos of The Sleeman House



V. Nagy, 2023



S. Robinson, 2010



S. Robinson, 2010

Statement of Significance

211 Silvercreek Parkway South is worthy of designation under Part IV, Section 29 of the Ontario Heritage Act because it meets five of the prescribed criteria for determining cultural heritage value or interest, according to Ontario Regulation 9/06 as amended by Ontario Regulation 569/22. The heritage attributes of 211 Silvercreek Parkway South display: design or physical, historical or associative, and contextual value.

Design/Physical Value

211 Silvercreek Parkway South meets Criterion 1 of Ontario Regulation 9.06, as amended by Ontario Regulation 569/22, being of design or physical value as it is an excellent and representative example of late-19th century Queen Anne revival style in the City of Guelph. In fact, it was one of the first homes with electricity in the City of Guelph and was the most ornate home at time of construction.

211 Silvercreek Parkway South meets Criterion 2 of Ontario Regulation 9.06, as amended by Ontario Regulation 569/22, being of design or physical value as it demonstrated a high degree of mason craftsmanship in the hand carved vermicular stone cutting and deep stone cornice on the front façade of the three-storey tower. The same degree of stone masonry is rarely seen elsewhere in the City of Guelph.

Historical/Associative Value

211 Silvercreek Parkway South meets Criterion 4 of Ontario Regulation 9.06, as amended by Ontario Regulation 569/22, being of historical or associative value as it has significant historically association with George Sleeman, the City of Guelph's first mayor, successful brewer and philanthropist. George Sleeman was an integral figure in the growing Guelph community during his life and Sleeman Breweries Ltd. continues to be a prominent employer of Guelph labour.

211 Silvercreek Parkway South meets Criterion 6 of Ontario Regulation 9.06, as amended by Ontario Regulation 569/22, being of historical or associative value because the Sleeman House reflects the work and ideas of both George Sleeman, an important innovator, and John Day, a successful local architect who designed the Petrie-Kelly building, portions of the Silver Creek Brewery and multiple other commercial properties and residences in Guelph.

Contextual Value

211 Silvercreek Parkway South meets Criterion 9 of Ontario Regulation 9/06, as amended by Ontario Regulation 569/22, being of contextual value as the property is a visible landmark for the Guelph community. The three-storey Queen Anne structure is easily spotted from the Hanlon Parkway and Wellington Street West and marks the beginning of the older Guelph developments heading east on Wellington Street West into downtown Guelph.

Next Steps

1. Collect feedback from Heritage Guelph members and complete additional research if necessary
2. Identify Heritage Attributes and Designation Recommendation for September 11th, 2023
3. Bring Notice of Intention to Designate to Council late 2023 or early 2024

Questions?