

Objectives and Guiding Principles for the Ontario Reformatory Heritage Conservation District Plan and Guidelines

Workshop Presentation to
Heritage Guelph

August 14, 2023

Presentation Outline

1. ORHCD Study and boundary
2. Existing context and current heritage status
3. Purpose of the ORHCD Plan and Guidelines
4. ORHCD Statement of Objectives
5. ORHCD Guiding Principles
6. Discussion – what input we are looking for in this workshop?
7. Questions

1. ORCHD Study and boundary



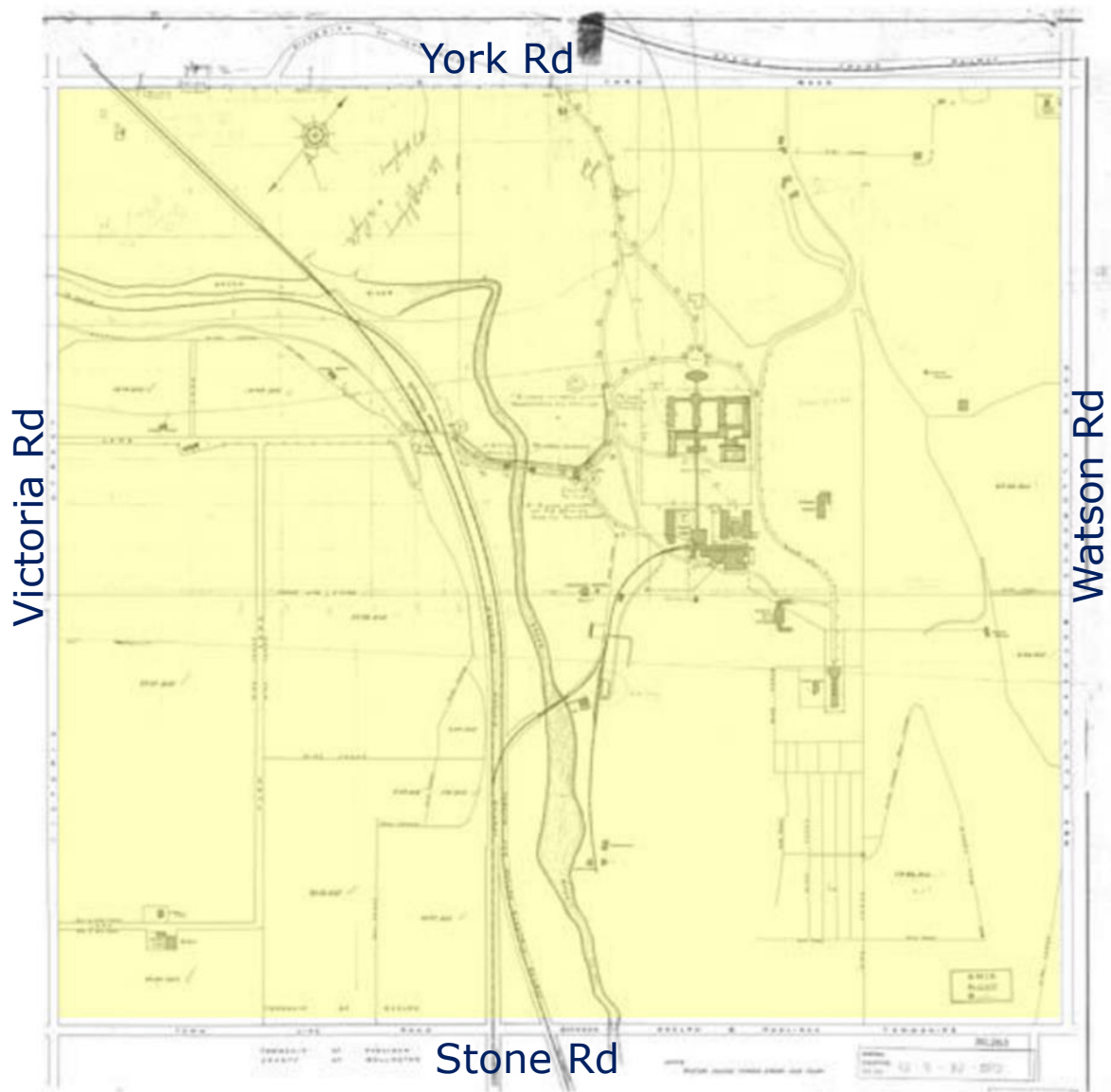
Ontario Reformatory
HCD boundary
approved with
ORHCD Study
in March 2023

2. Existing context

“Ontario Reformatory lands”

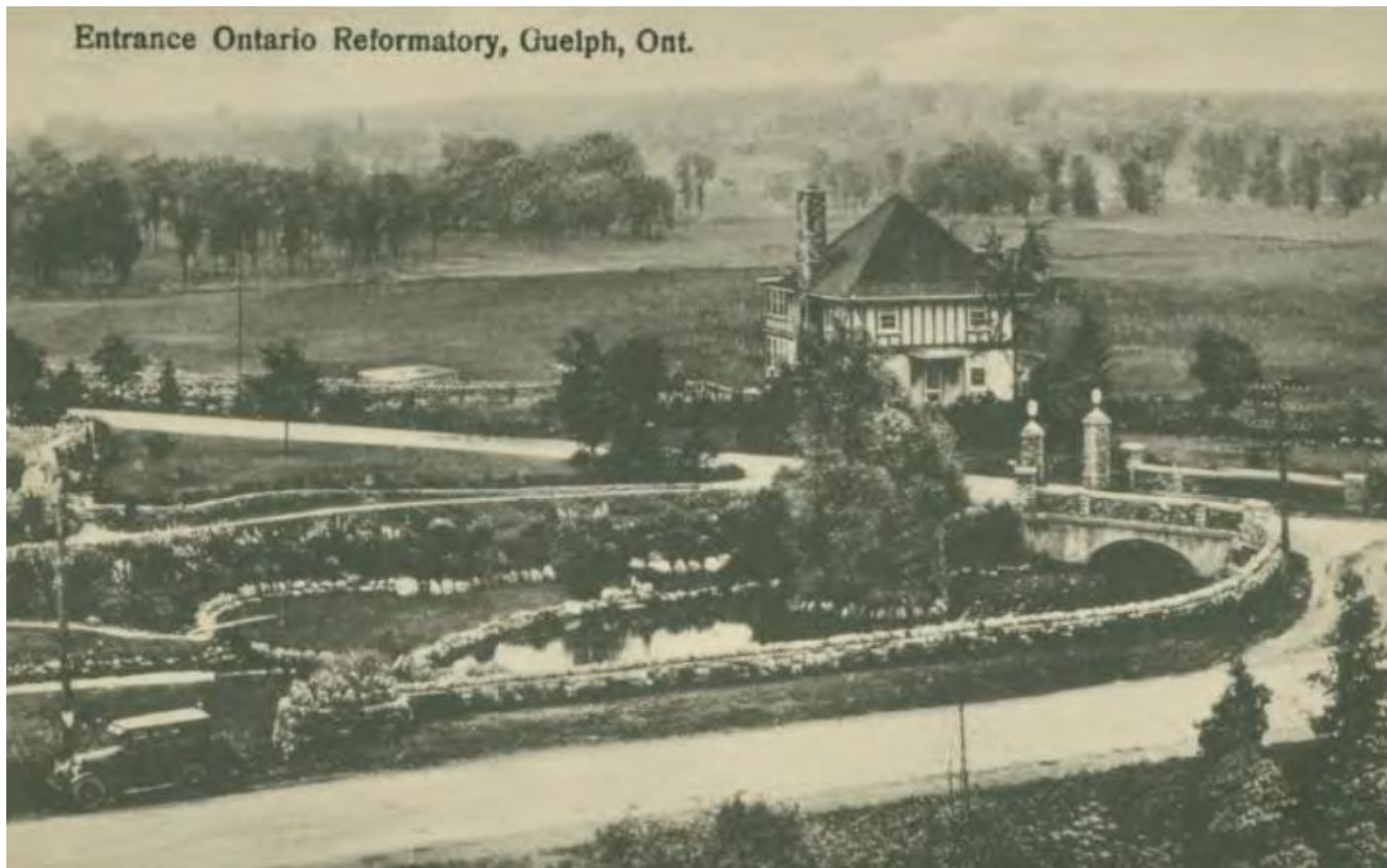
The lands purchased in 1910 by the Province of Ontario for the Ontario Reformatory at Guelph consisted of the entire block bounded by what is now York Road, Watson Road South, Stone Road East and Victoria Road South. “Ontario Reformatory lands” refers to this original block of land.

The approved boundary for the ORHCD represents the portion of the original Ontario Reformatory lands that have cultural heritage value.



Original extent of the Ontario Reformatory lands purchased by the Province in 1910

1920s photo of York Road entrance with stone wing wall



Current heritage status

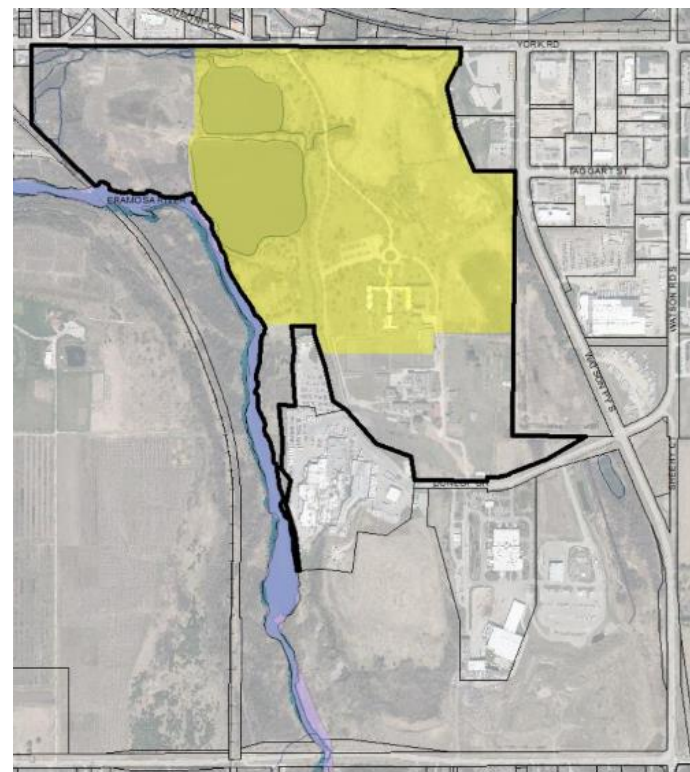
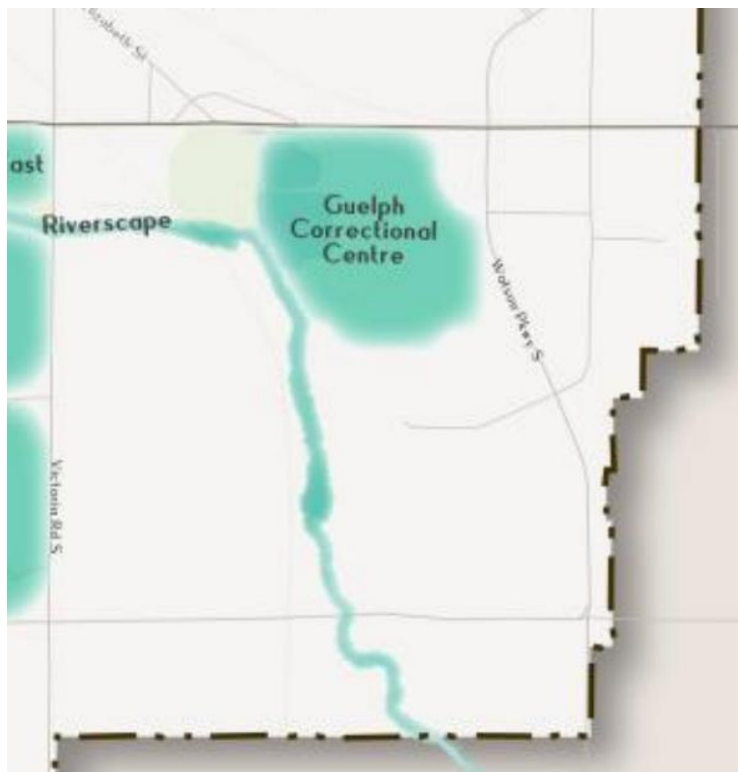
In 2008 the Province of Ontario identified a portion of the property at 785 York Road as a Provincial Heritage Property of Provincial Significance.

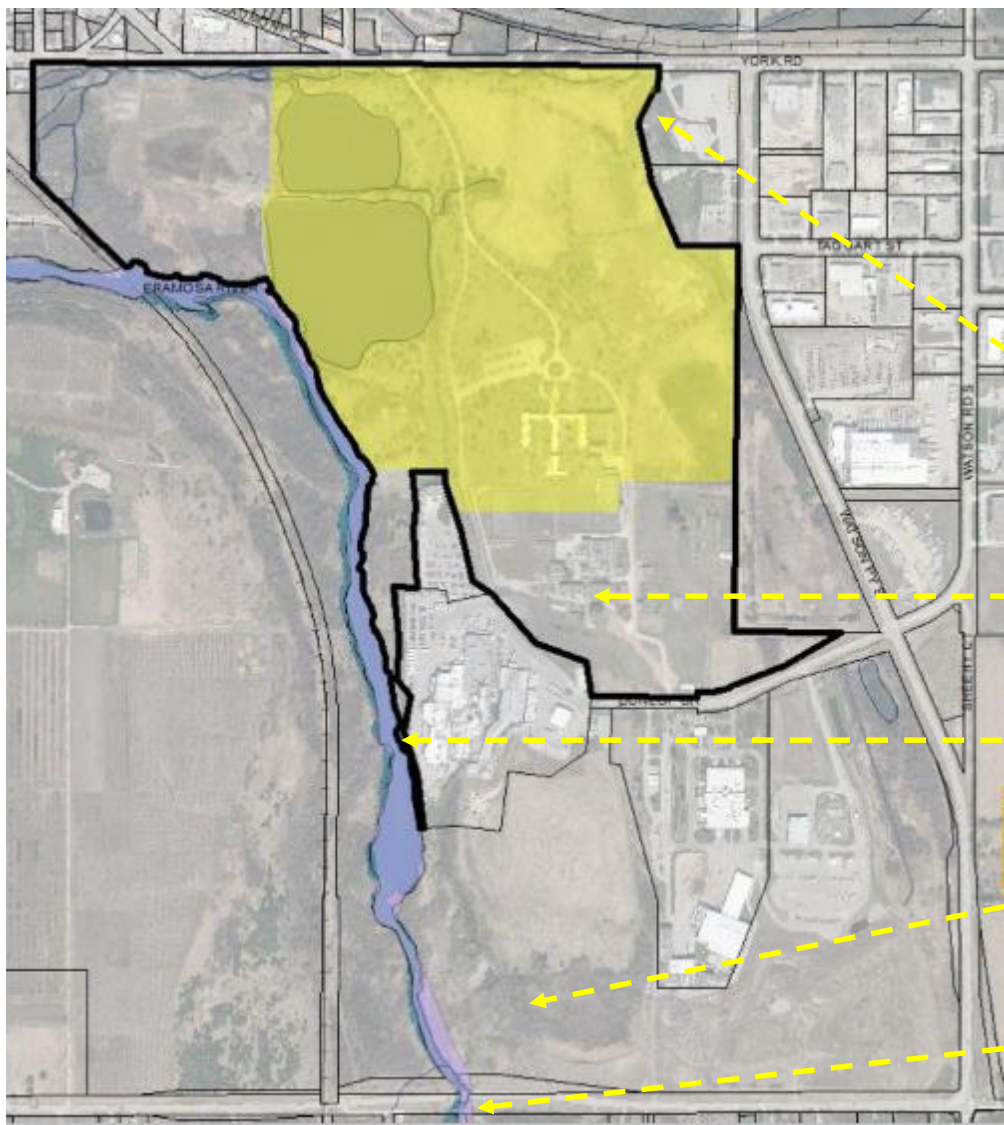
A portion of the Ontario Reformatory lands still owned by the Province was identified as a candidate cultural heritage landscape in the City of Guelph's Cultural Heritage Action Plan (CHAP) in June 2021.

Its significance was also recognized by the City of Guelph, which designated the property at 785 York Road under Part IV of the Ontario Heritage Act in October 2021.

The cultural heritage landscape of Provincial significance was indicated as the “Guelph Correctional Centre” CHL in the City of Guelph’s Cultural Action Plan (June 2021).

785 York Road (black outline) designated individually through By-law (2021)-20631 in October 2021 which contains the cultural heritage landscape (CHL) of Provincial significance (yellow area).





- 785 York Road (black outline) designated individually through By-law (2021)-20631
- Cultural heritage landscape (CHL) of Provincial significance (yellow area)
- 919 York Rd – North Gate, Matthews Farmhouse and stone shed (Intention to designate under appeal)
- Chapel, workshop buildings, powerhouse and chimney listed on heritage register
- Wooden tressle bridge (part of 785 York Rd) listed on heritage register
- 80 Dunlop Dr – Reformatory Quarry CHL area listed on heritage register
- McQuillan's Bridge designated individually through By-law (2004)-17357A



Ontario Reformatory
HCD boundary
approved with
ORHCD Study
in March 2023

3. Purpose of the ORHCD Plan and Guidelines

The purpose of the Ontario Reformatory Heritage Conservation District Plan and Guidelines (ORHCD Plan) is to ensure the cultural heritage value of the Ontario Reformatory lands are protected, managed, maintained, and enhanced over time.

It provides the City of Guelph, future owners, and tenants of the property with guidance on managing change, restoration, and alteration activities involving cultural heritage resources.

The ORHCD plan and guidelines will provide guidance to assist Council, Heritage Guelph, and staff in reviewing and making decisions on planning and heritage permit applications proposed within the HCD.

ORHCD Plan purpose

The ORHCD Plan and Guidelines will:

- Confirm the HCD boundary as identified in Phase 1: HCD Study;
- Describe the HCD cultural heritage value and significance including the statement of objectives for the HCD Plan; and
- Provide guidelines founded on the statement of objectives and the recommendations of the Study that will provide a consistent approach to managing change, alterations, and maintenance of the Ontario Reformatory's cultural heritage attributes.

4. Statement of Objectives

The main objective of the ORHCD Plan and Guidelines is the long-term protection, conservation, and management of the HCD's cultural heritage landscapes and built heritage resources.

Statement of Objectives ...

Specific objectives include:

1. Conserve (as defined in the City of Guelph Official Plan and the Provincial Policy Statement), the cultural heritage value of the HCD and its heritage attributes;
2. Conserve the cultural heritage landscape attributes in alignment with the City's natural heritage policies and objectives;
3. Conserve the physical road pattern and layout as described in Part IV and Part V designation;
4. Conserve, recognize, and attribute the presence of the Indigenous, settler, and reformatory periods throughout the ORHCD;
5. Conserve the physical form, scale, architectural features, and heritage attributes of the built heritage resources;

Statement of Objectives

6. Conserve the scale and form depicted in each character area through the guidelines, the Guelph Innovation District Secondary Plan and Block Plan process;
7. Ensure that proposed alterations to contributing cultural heritage attributes are informed by the guidelines of this HCD Plan;
8. Recommend a heritage permit process for the ORHCD;
9. Ensure new development conserves, maintains, and enhances the cultural heritage value of the HCD;
10. Ensure the ORHCD Plan is referenced by professional archaeologists when archaeological assessments are carried out within the HCD;
11. Encourage high-quality design in new development, additions, and alterations that are complementary and compatible with the HCDs cultural heritage value;

Statement of Objectives

12. Encourage development and alterations adjacent to the ORHCD to consider the ORHCD Plan and Guidelines to minimize negative visual impacts.
13. Ensure the City of Guelph's social, cultural, diversity and inclusivity, and community values are reflected in the HCD;
14. Commemorate the HCD's Indigenous heritage;
15. Conserve, maintain, and enhance the public realm; and,
16. Conserve, maintain, and enhance the recreational aspects and public amenities of the HCD.

5. Guiding Principles

The OR HCD Plan and Guidelines will be based on the accepted principles in Parks Canada's Standards and Guidelines for the Conservation of Historic Places in Canada and include the principles developed from the Ontario Reformatory Heritage Conservation District Study.

Guiding Principles ...

- Protect and maintain the cultural heritage landscape associated with watercourses while seeking a balance with natural heritage system objectives and ecological restoration initiatives;
- The major features that form a cohesive landscape, including watercourses, circulation routes, and built features, that together form a recognizable whole, shall be conserved in accordance with the City's natural heritage plans and policies;
- Ensure the various historic periods, the peoples who came through the site, and the sense of time and place, are depicted and felt by experiencing the built form, landscape design, and interpretation throughout the OR HCD;
- The OR HCD shall be conserved and clearly differentiated from the contemporary adjacent developments through transitions in landscape and/or architectural design;

Guiding Principles ...

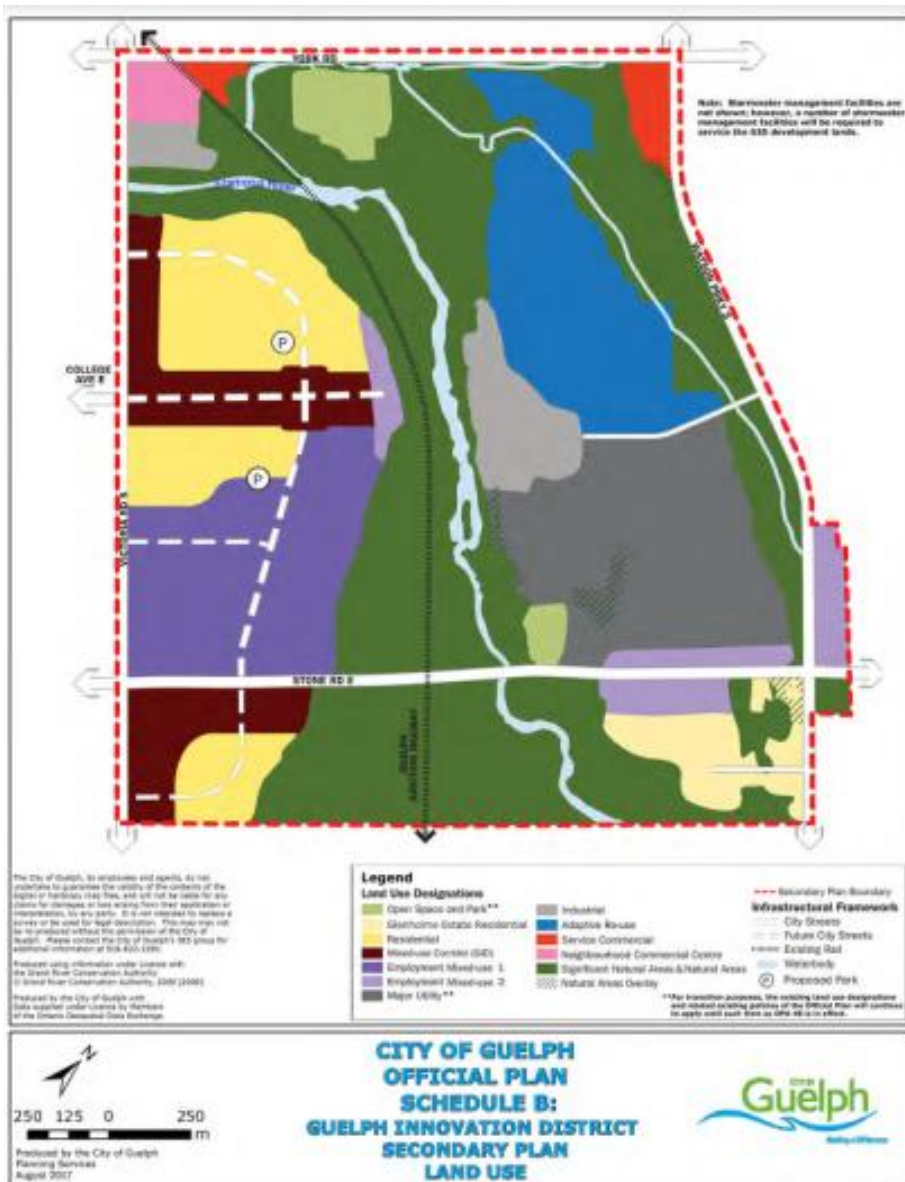
- Ensure that alterations to cultural heritage landscapes, and to institutional and residential built cultural heritage resources reflect the City Beautiful movement, wherever possible;
- Changes during the course of restorations, rehabilitations, and alterations will be documented concerning the cultural heritage and historical context of the OR HCD, as outlined in the Study;
- The cultural heritage character of the OR HCD will be preserved by discouraging false representations of history and design;
- Repair rather than replace cultural heritage resources through ongoing maintenance and conservation. Where repair is not feasible and replacement is necessary, replacement features should match the form and detail of original materials;

Guiding Principles

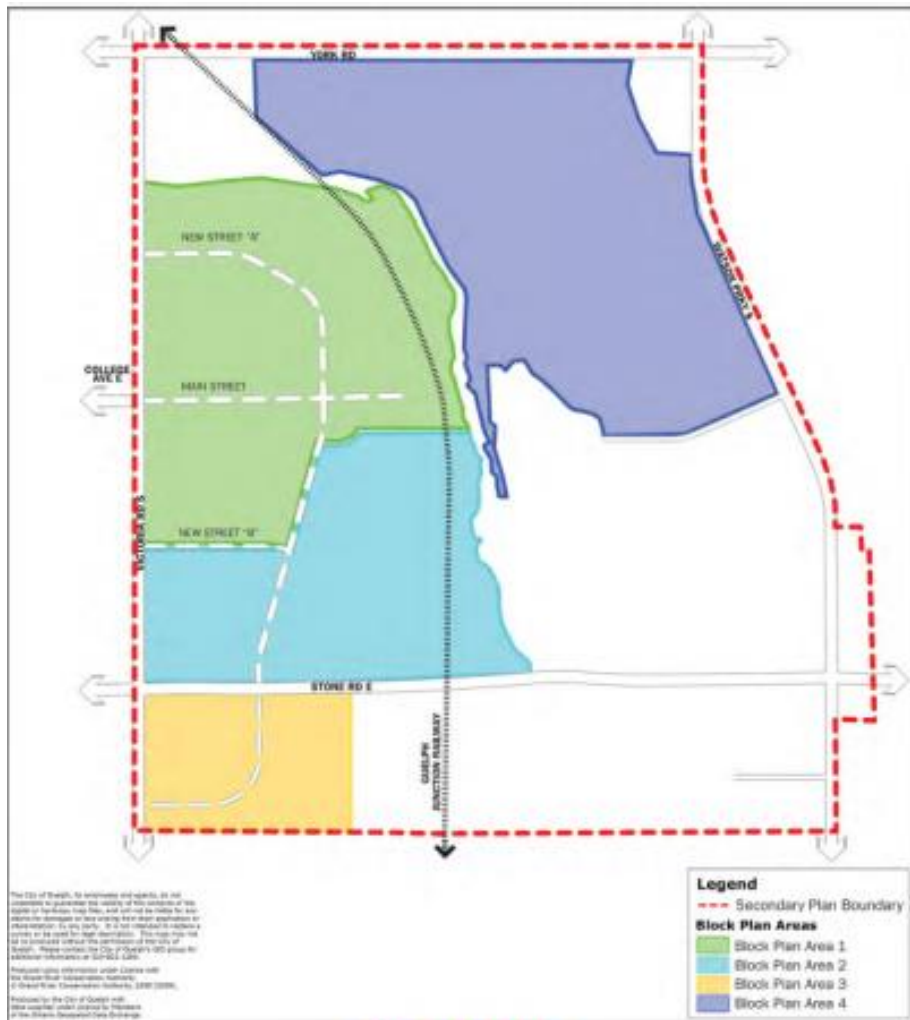
- Cultural heritage features that have deteriorated to a level that is beyond practical restoration or rehabilitation will be assessed and future options will be outlined;
- The continued function of built-form heritage resources is encouraged through adaptive reuse; and
- Building alterations for additions and other interventions should be undertaken in a manner that respects and enhances the cultural heritage resource and the OR HCD.

Future planning and heritage conservation

- Other land use planning tools that will guide development in the ORHCD are the Guelph Innovation District Secondary Plan and Block Plan Area 4
- It is important to understand that land use will not be defined or changed in the HCD Plan as the GID Secondary Plan sets out the land use
- Potentially recommendations for OP policy and Zoning regulations may result from the HCD Plan and Guidelines.



GID Secondary Plan Land Use



Block Plans within GID Secondary Plan Area

250 125 0 250 m

**CITY OF GUELPH
OFFICIAL PLAN
SCHEDULE D:
GUELPH INNOVATION DISTRICT
SECONDARY PLAN
BLOCK PLAN AREAS**

Produced by the City of Guelph Planning Services, May 2014

Discussion – what input are we looking for in this workshop?

What input are we looking for in this workshop? ...

- Do you feel the stated objectives and guiding principles are appropriate?
 - What would you change?

What input are we looking for in this workshop?

- Do you feel the stated objectives and guiding principles are appropriate?
 - What would you change?
- Do you think the guiding principles provide a balance between preservation and managing change? Should they be stronger or more permissive? What would you remove or add?

What input are we looking for in this workshop?

- Do you feel the stated objectives and guiding principles are appropriate?
 - What would you change?
- Do you think the guiding principles provide a balance between preservation and managing change? Should they be stronger or more permissive? What would you remove or add?
- What do you think will be the positive impacts of the HCD? What are your concerns?

Questions?