

# South End Community Centre (SECC): Recreational Trail and Design Update

AAC Meeting, August 15, 2023

Presented by:

Ian Scott, Manager, Facility Design and Construction,  
Facilities and Energy Management

# Agenda

## 1. Background Information

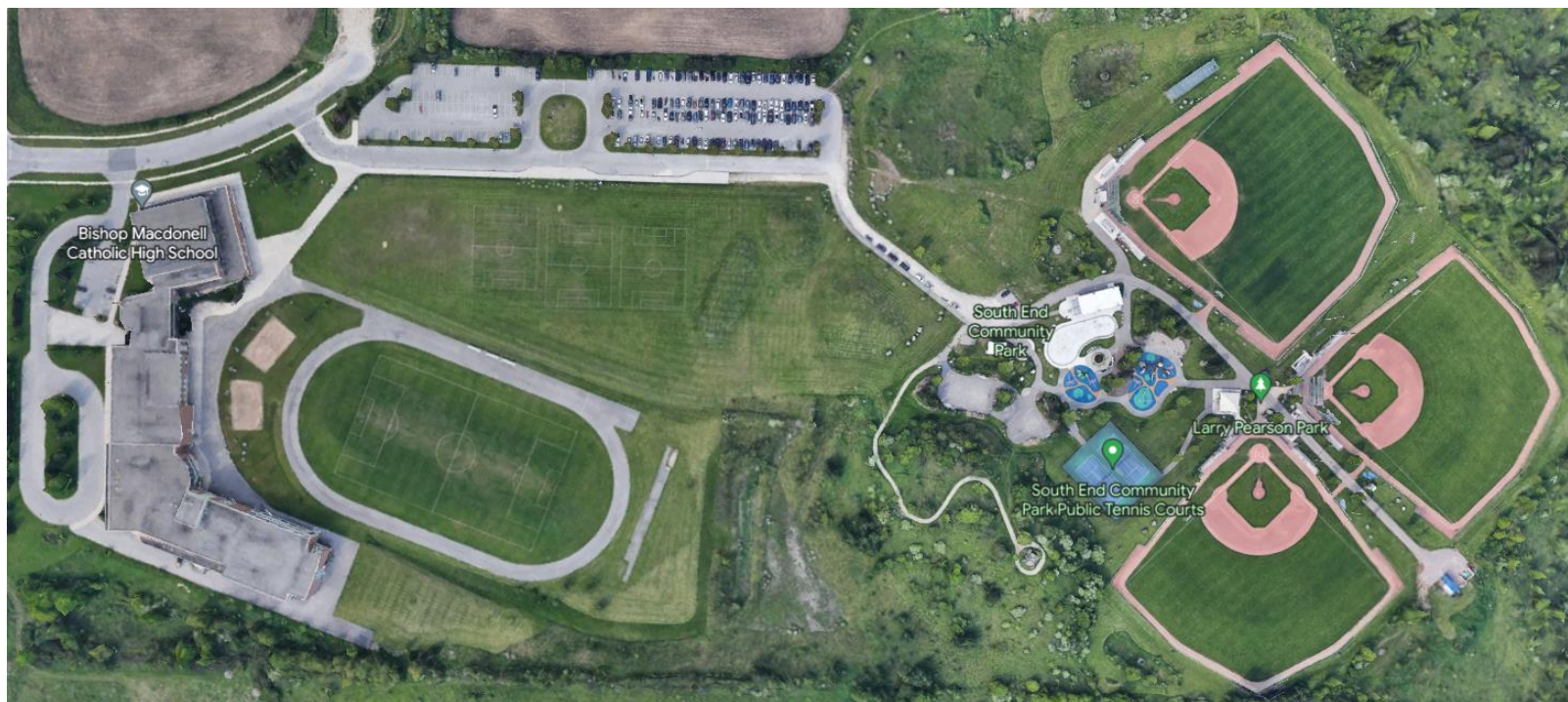
- SECC Information
- Scope: Accessibility criteria

## 2. Feedback

- Recreation trail
- Trail design and rest areas

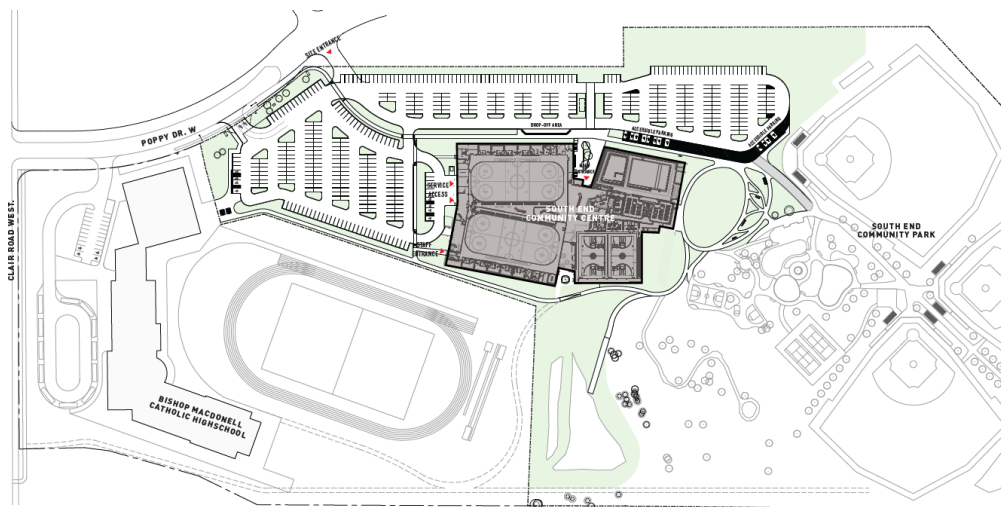
Looking forward to your questions and comments at the end of the presentation.

# Existing Lands



# South End Campus

- Overall campus includes Bishop Macdonnell Catholic High School
- Campus amenities:
  - Dragonfly Playground and Splashpad
  - Three (3) Larry Pearson Ball Diamonds
  - Two (2) Tennis Courts
  - One (1) full Basketball Court, and two (2) additional nets
  - Trails
  - Sports Fields
  - Picnic Shelter (covered)

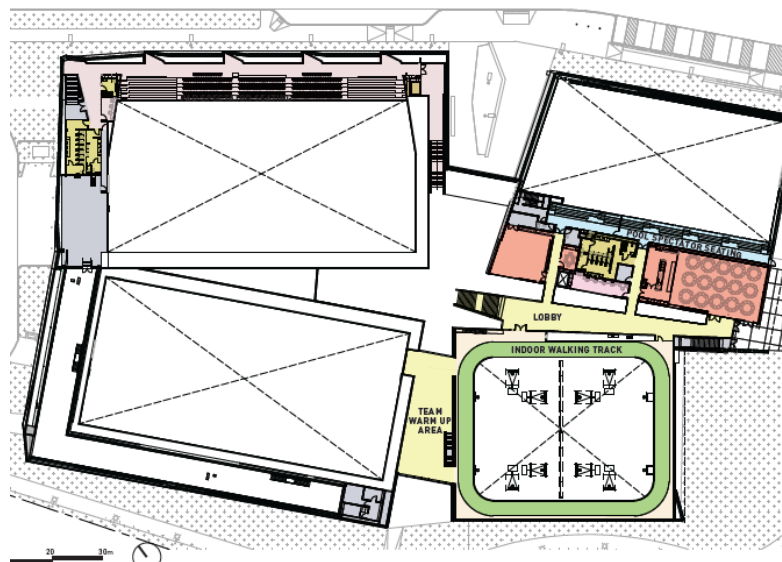
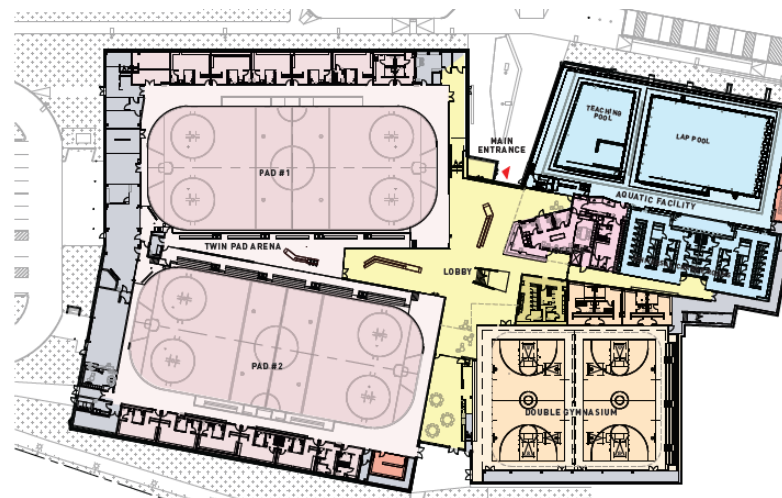


# SECC Facility Amenities

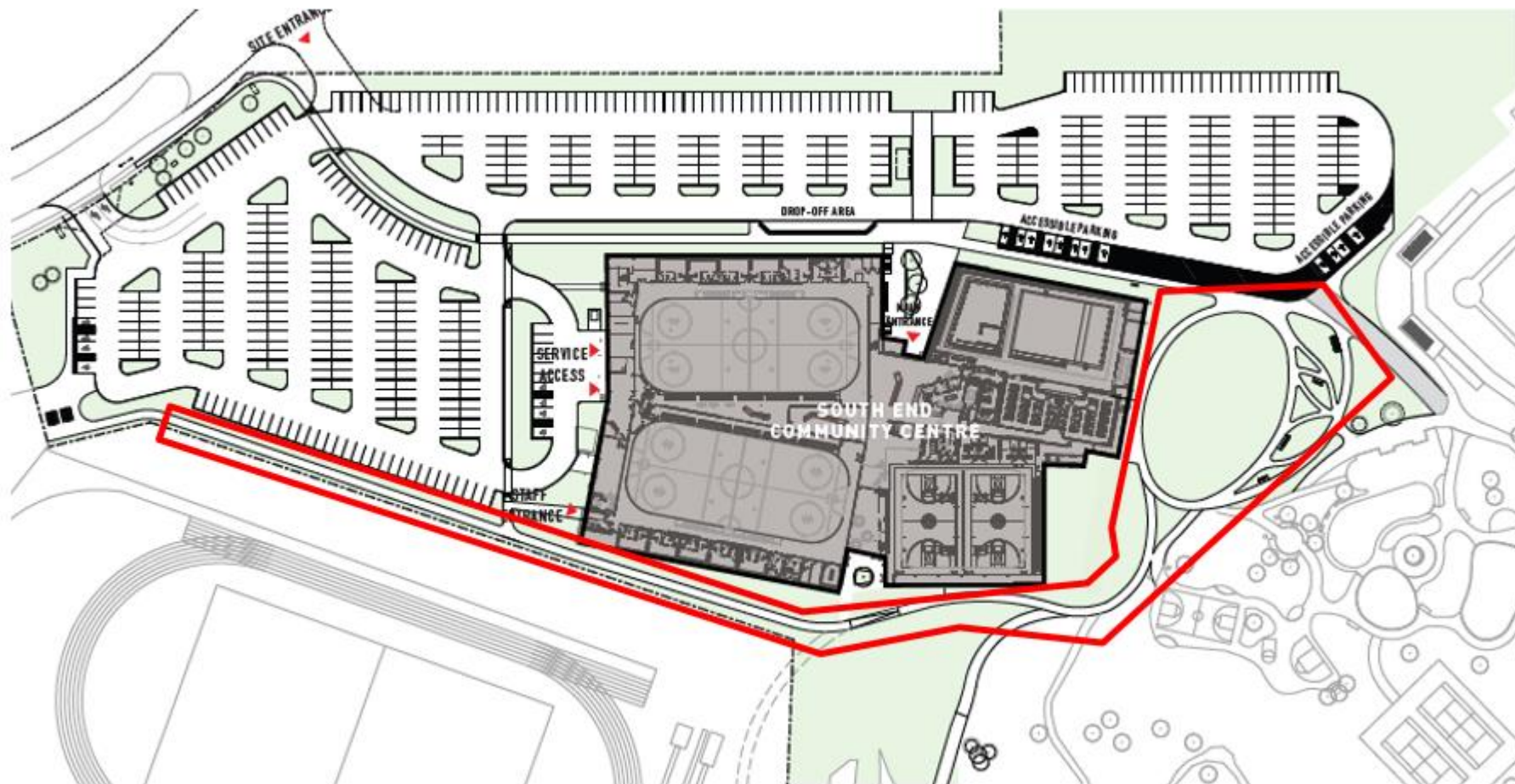
Accessible:

- Twin ice pads
- 25 metre eight lane lap pool
- Teaching pool
- Double gymnasium
- Indoor walking track
- Multi-use program and meeting space

Meets the City's energy goals of Net Zero Carbon



# AAC Reviewed Site Plan



# Project Details

- Trail design meets the City's FADM, which includes:
  - Slopes and surface material,
  - Trail width (3 meters wide) with rest areas at the grass oval in the park, and rear courtyard of the SECC,
  - Accessible wheelchair seating; and
  - Night-time lighting.
- Project Next Steps
  - Construction of the SECC will start in 2026.
  - Final site works and SECC facility opening 2026.

# AAC Feedback

## Questions for the AAC:

- Are there additional trail amenities that the City should consider?
- Are there adequate rest areas?
- Do you have wayfinding and/or signage recommendations?

## Recommended Motion:

That the AAC reviewed the multi-use trail design, and:

- supports the design, or
- has no comments on the design, or
- recommend that \_\_\_\_\_ amenities be considered as part of the design.