

Attachment-1 Property location and photos taken by Heritage Planning staff

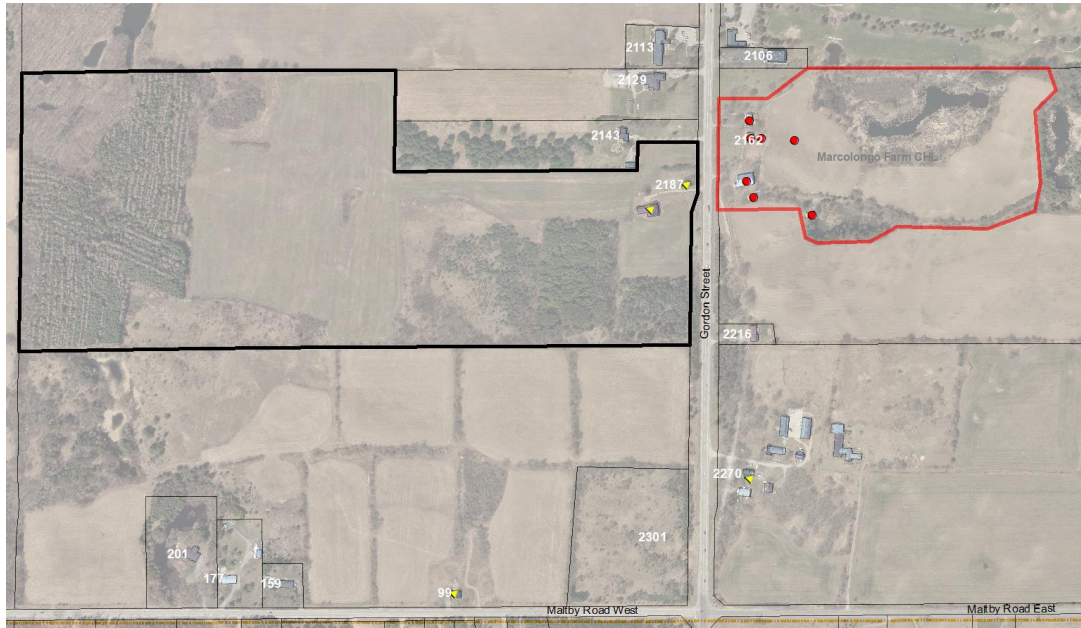


Figure 1 - Subject property identified in black outline (City of Guelph GIS).

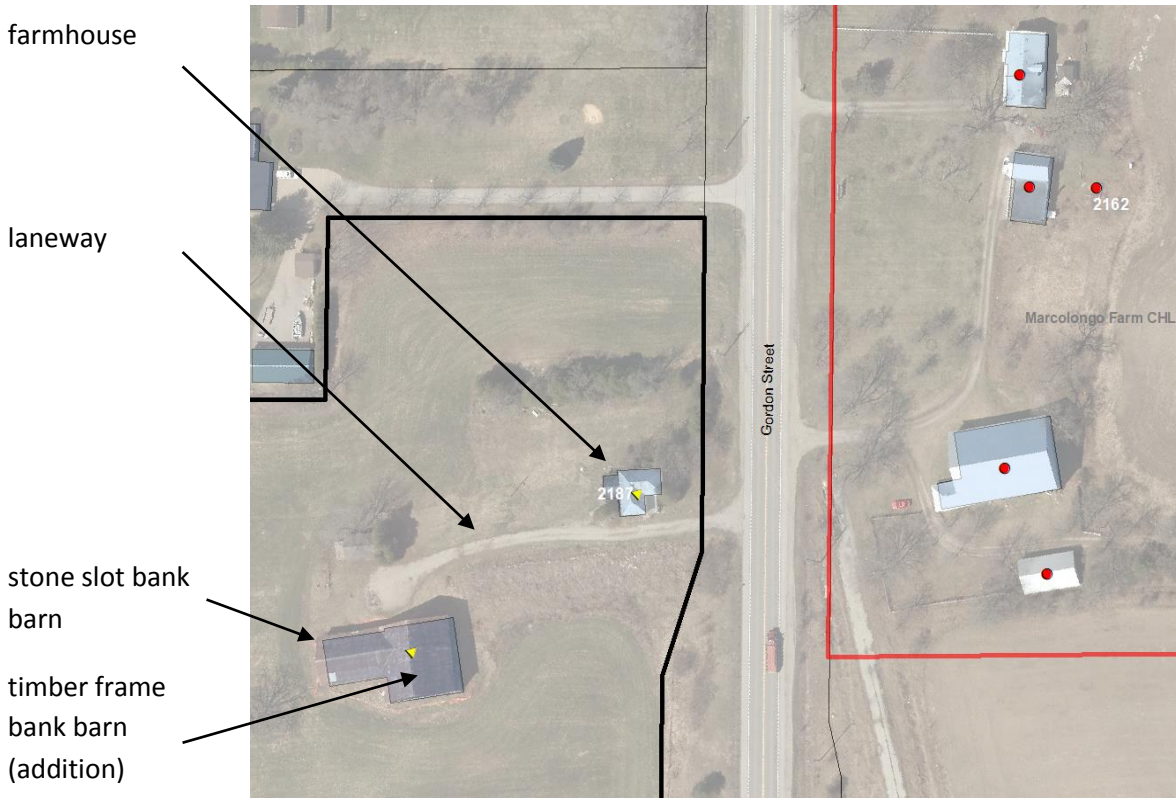


Figure 2 - Location of subject buildings. (City of Guelph GIS).

Figure 3 - Plan of Survey showing 61R-21631 (Van Harten Surveying, 2019)

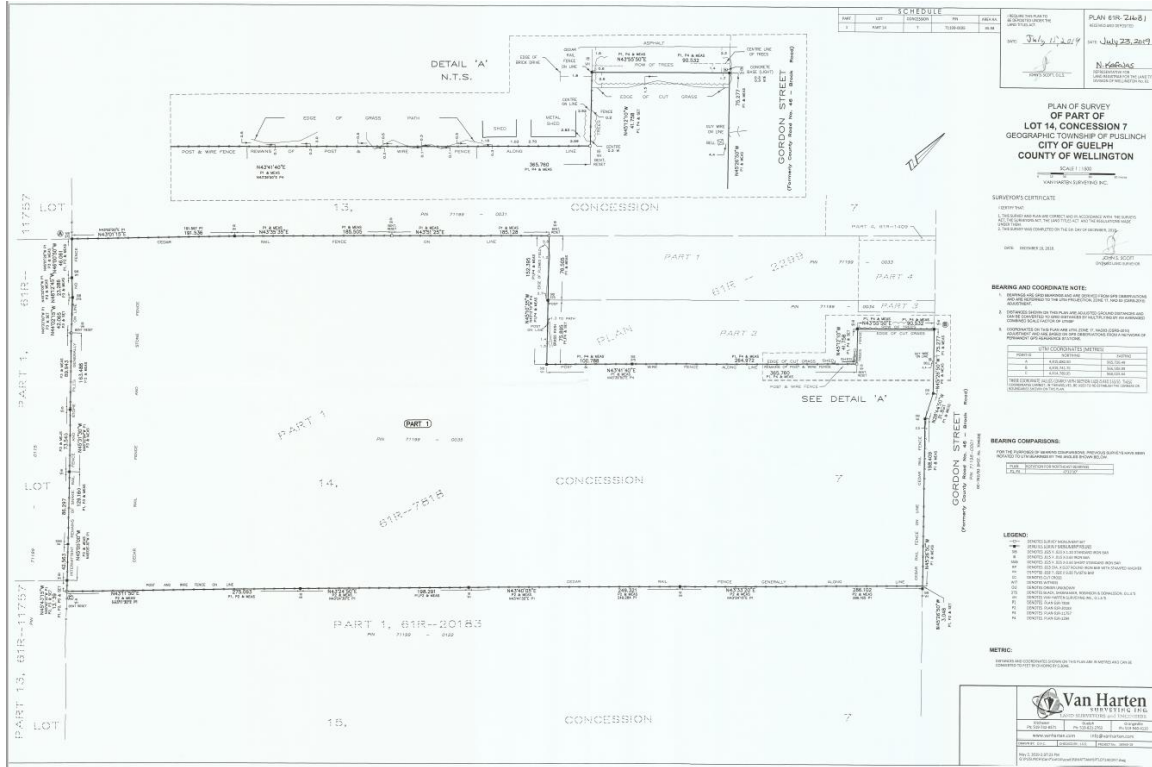


Figure 4 - View west from Gordon Street. (Photo: S. Robinson of Heritage Planning taken July 26, 2023)



2023 July 27 – Photos taken by S. Robinson of Heritage Planning during site visit with Property Standards staff.



Figure 5: Photo of barn exterior. Taken July 27, 2023, by S. Robinson.



Figure 6: Photo of barn exterior. Taken July 27, 2023, by S. Robinson.



Figure 7: Photo of collapsed barn wall. Taken July 27, 2023, by S. Robinson.



Figure 8: Photo of collapsed barn wall. Taken July 27, 2023, by S. Robinson.



Figure 9: Photo of collapsed barn wall. Taken July 27, 2023, by S. Robinson.



Figure 10: Photo of collapsed barn wall. Taken July 27, 2023, by S. Robinson.



Figure 11: Photo of collapsed barn wall and compromised connecting corner. Taken July 27, 2023, by S. Robinson.



Figure 12: Photo of collapsed barn wall and interior of barn. Taken July 27, 2023, by S. Robinson.



Figure 13: Photo of collapsed barn wall and barn interior. Taken July 27, 2023, by S. Robinson.



Figure 14: Photo of collapsed barn wall and interior. Taken July 27, 2023, by S. Robinson.



Figure 15: Photo of collapsed barn wall and interior with rubble in the foreground. Taken July 27, 2023, by S. Robinson.

2023 July 27 – Photos taken by S. Robinson of Heritage Planning



Figure 16: Photo of the barn's wooden addition. Taken April 25, 2023, by S. Robinson.



Figure 17: Photo of the barn's wooden addition. Taken April 25, 2023, by S. Robinson.



Figure 18: Photo of the barn's wooden addition. Taken April 25, 2023, by S. Robinson.



Figure 19: Photo of the barn's wooden addition. Taken April 25, 2023, by S. Robinson.



Figure 20: Photo of stone slot barn and wooden addition. Taken April 25, 2023, by S. Robinson.



Figure 21: Photo of the barn's entrance and side wall. Taken April 25, 2023, by S. Robinson.



Figure 22: Photo of the barn entrance. Taken April 25, 2023, by S. Robinson.



Figure 23: Photo of the barn entrance and temporary barrier. Taken April 25, 2023, by S. Robinson.



Figure 24: Photo of a crack the barn's exterior corner. Taken April 25, 2023, by S. Robinson.



Figure 25: Photo of the barn's exterior. Taken June 17, 2019, by S. Robinson.



Figure 26: Photo of the barn's exterior. Taken June 17, 2019, by S. Robinson.



Figure 27: Photo of the barn's main door and failed foundation. Taken June 17, 2019, by S. Robinson.



Figure 28: Photo of the barn's main door and failed foundation. Taken June 17, 2019, by S. Robinson.



Figure 29: Photo of a hole in the roof above the main door. Taken June 17, 2019, by S. Robinson.



Figure 30: Photo of an internal crack in the exterior wall. Taken June 17, 2019, by S. Robinson.



Figure 31: Photo of the barn's interior and the metal roof. A crack can be seen in the upper left corner. Taken June 17, 2019, by S. Robinson.



Figure 32: Photo of the barn's interior and pedestrian door. Taken June 17, 2019, by S. Robinson.



Figure 33: Photo of the stone barn's interior. Four people stand on either side of a large crack in the internal stone wall next to the internal doorway. Taken June 17, 2019, by S. Robinson.



Figure 34: Photo of the barn's interior wall and doorway. Taken June 17, 2019, by S. Robinson.



Figure 35: Photo of the section removed from the barn's interior wall. The ceiling of the wooden addition is visible through the space, and a crack is visible down the wall to the right. Taken June 17, 2019, by S. Robinson.



Figure 36: Photo of one of the barn's slots from the interior. Taken June 17, 2019, by S. Robinson.



Figure 37: Photo of one of the barn's slots taken from the interior, looking out to the field in the west of the property. Taken June 17, 2019, by S. Robinson.



Figure 38: Photo of the barn's stone exterior. Taken June 17, 2019, by S. Robinson.



Figure 39: Photo of the barn's exterior. Taken June 17, 2019, by S. Robinson.



Figure 40: Photo of the barn's exterior. Taken June 17, 2019, by S. Robinson.



Figure 41: Photo of the basement of the stone barn taken from an external doorway. Taken June 17, 2019, by S. Robinson.



Figure 42: Photo of the basement stalls of the stone barn. Taken June 17, 2019, by S. Robinson.



Figure 43: Photo of the basement root cellar and the ladder leading outside. Taken June 17, 2019, by S. Robinson.



Figure 44: Photo of the root cellar and partially collapsed foundation. Taken June 17, 2019, by S. Robinson.



Figure 45: Photo of stone rubble in the basement of the stone barn. Taken June 17, 2019, by S. Robinson.



Figure 46: Photo of root cellar, showing the collapsed section of foundation. Taken June 17, 2019, by S. Robinson.



Figure 47: Photo of internal wood framing. Taken June 17, 2019, by S. Robinson.

2011 August 15 – Photos taken by S. Robinson of Heritage Planning during site visit with owner (Barbara Zuccala)



Figure 48: Photo of the

barn exterior. Taken August 15, 2011, by S. Robinson.



Figure 49:

Photo of the wood extension exterior. Taken August 15, 2011, by S. Robinson.



Figure 50: Photo of the stone barn main door. Taken August 15, 2011, by S. Robinson.

Figure 51: Photo of the stone barn exterior. Taken August 15, 2011, by S.



Robinson.

Figure 52: Photo of the stone barn exterior featuring an external slot. Taken August 15, 2011, by S. Robinson.



Figure 53: Photo of the stone barn exterior highlighting a compromised corner. Taken August 15, 2011, by S. Robinson.



Figure 54: Photo of the stone barn exterior featuring a stone slot. Taken August 15, 2011, by S. Robinson.



Figure 55: Photo of the stone barn exterior featuring a stone slot. Taken August 15, 2011, by S. Robinson.



Figure 56: Photo of the stone barn exterior featuring two slots and a window entry. Taken August 15, 2011, by S. Robinson.



Figure 57: Photo of the stone barn rear exterior. Taken August 15, 2011, by S. Robinson.



Figure 58: Photo of the stone barn exterior rear. Taken August 15, 2011, by S. Robinson.



Figure 59: Photo of the stone barn and wooden addition rear exterior. Taken August 15, 2011, by S. Robinson



Figure 60: Photo of corner of the stone barn exterior. Taken August 15, 2011, by S. Robinson.



Figure 61: Photo of the wooden addition rear exterior. Taken August 15, 2011, by S. Robinson.



Figure 62: Photo of the wooden extension exterior. Taken August 15, 2011, by S. Robinson.



Figure 63: Photo of the stone barn interior facing the main door. Taken August 15, 2011, by S. Robinson.



Figure 64: Photo of the stone barn interior. Taken August 15, 2011, by S. Robinson.



Figure 65: Photo of the stone barn interior facing internal doorway. Taken August 15, 2011, by S. Robinson.



Figure 66: Photo of the wooden barn addition the interior door. Taken August 15, 2011, by S. Robinson.



Figure 67: Photo of the stone basement interior facing out exterior doors. Taken August 15, 2011, by S. Robinson.



Figure 68: Photo of scarf joint in stone barn basement framing. Taken August 15, 2011, by S. Robinson.



Figure 69: Photo of the stone barn root cellar entrance. Taken August 15, 2011, by S. Robinson.



Figure 70: Photo of the Kidd barn from City of Guelph Inventory of Heritage Structures, 2003.



Figure 71: Stone slot barn at 6103 Wellington Rd 7, Centre Wellington. (Image: Google Street View)



Figure 72: Slit barn at the rare ECO Centre on Blair Road, Cambridge. (Image: Google Street View)

Blair farmhouse

2019 January 24 - Photos taken by S. Robinson of Heritage Planning staff during site visit with By-law Enforcement



Figure 73: Image of front exterior of the poured-concrete farmhouse. Taken January 24, 2019, by S. Robinson.



Figure 74: Image of rear exterior extension of the poured-concrete farmhouse. Taken January 24, 2019, by S. Robinson.

Blair farmhouse

2019 June 17 – Photos taken by S. Robinson of Heritage Planning staff during site visit with owner (Mattamy Homes)



Figure 75: Photo of interior of poured-concrete farmhouse. Taken June 17, 2019, by S. Robinson.



Figure 76: Photo of interior of poured-concrete farmhouse. Taken June 17, 2019, by S. Robinson.



Figure 77: Photo of exterior of the front of the farmhouse. Taken April 25, 2023, by S. Robinson.



Figure 78: Photo of exterior of the front of the farmhouse. Taken April 25, 2023, by S. Robinson



Figure 79: Photo of exterior of the rear extension of the farmhouse. Taken April 25, 2023, by S. Robinson.



Figure 80: Photo of failing façade on exterior the farmhouse. Taken April 25, 2023, by S. Robinson.



Figure 81: Photo of interior of wooden extension on rear of farmhouse. Taken April 25, 2023, by S. Robinson.



Figure 82: Photo of exterior of the farmhouse and extension. Taken April 25, 2023, by S. Robinson.



Figure 83: Photo of exterior of the farmhouse and extension. Taken April 25, 2023, by S. Robinson.



Figure 84: Photo of the Blair farmhouse from City of Guelph Inventory of Heritage Structures, 2003.