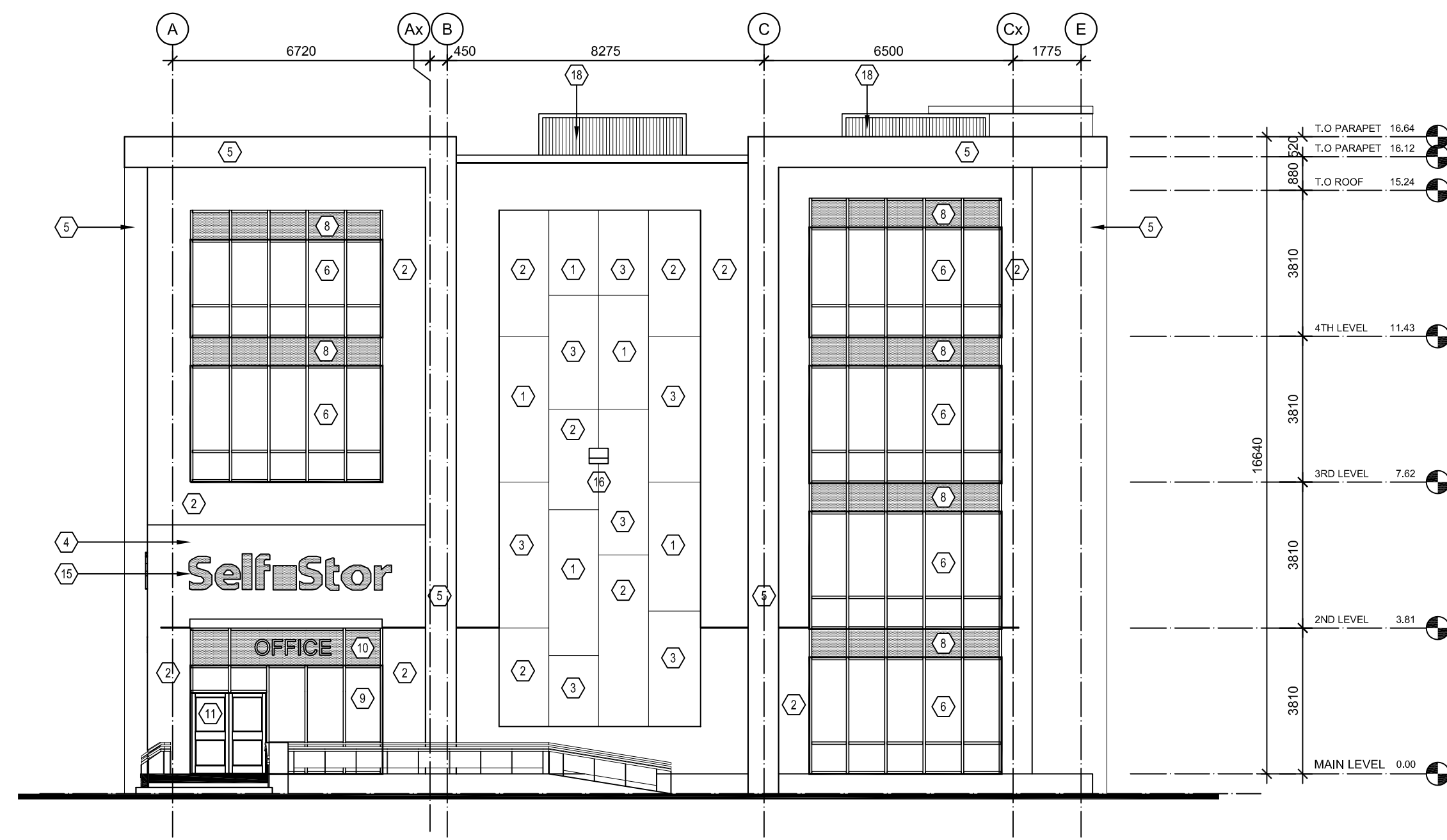
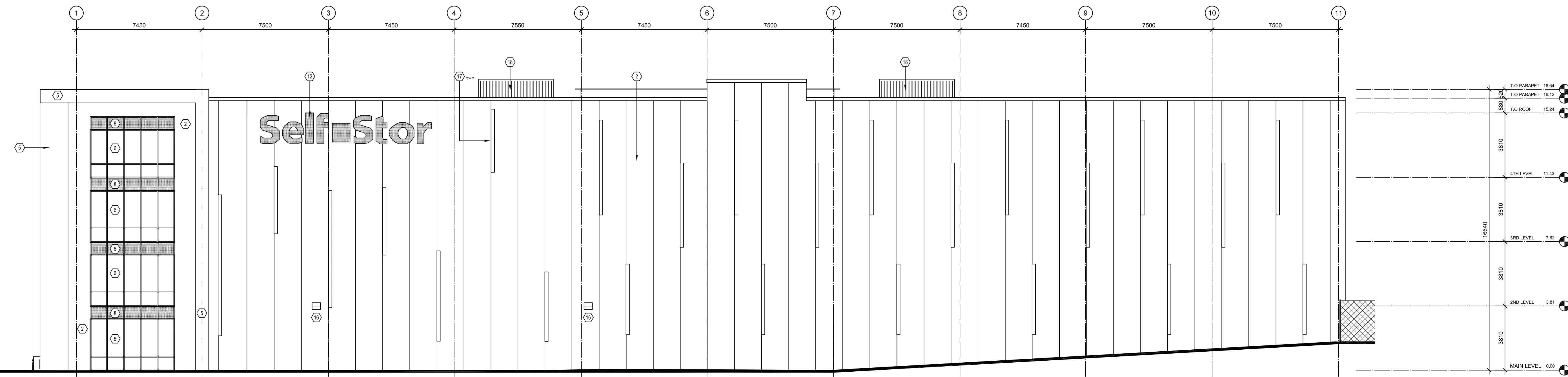


4 EAST ELEVATION
SCALE: 1:125

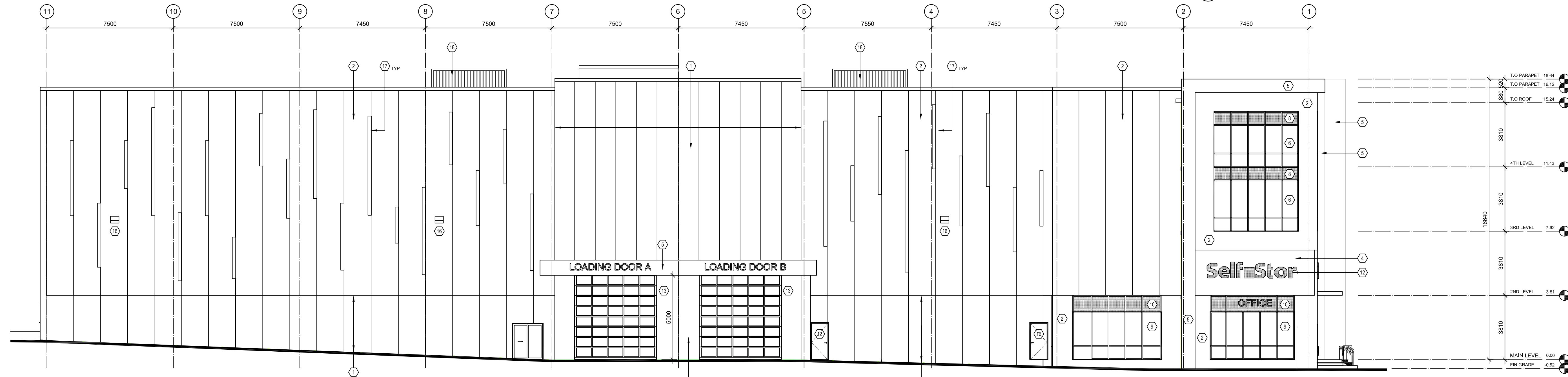


3 WEST ELEVATION
SCALE: 1:125

No.	MATERIAL FINISH
1	INSULATED METAL WALL PANEL SYSTEM - LIGHT GREY
2	INSULATED METAL WALL PANEL SYSTEM - MEDIUM GREY
3	INSULATED METAL WALL PANEL SYSTEM - DARK GREY
4	PREFINISHED METAL PANEL - WHITE
5	PREFINISHED METAL PANEL - DARK GREY
6	CLEAR ANODIZED ALUMINUM THERMALLY BROKEN CURTAINWALL FRAMING w/ INSULATED CLEAR VISION GLASS
7	CLEAR ANODIZED ALUMINUM THERMALLY BROKEN CURTAINWALL FRAMING w/ MEDIUM GREY SPANDREL PANEL
8	CLEAR ANODIZED ALUMINUM THERMALLY BROKEN CURTAINWALL FRAMING w/ LIGHT GREY SPANDREL PANEL
9	CLEAR ANODIZED ALUMINUM THERMALLY BROKEN ENTRANCE FRAMING w/ INSULATED CLEAR VISION GLASS
10	CLEAR ANODIZED ALUMINUM THERMALLY BROKEN ENTRANCE FRAMING w/ LIGHT GREY SPANDREL PANEL
11	CLEAR ANODIZED ALUMINUM SLIDING GLASS ENTRANCE SYSTEM
12	INSULATED HOLLOW METAL DOOR - PAINT FINISH
13	PREFINISHED INSULATED OVERHEAD DOOR
14	PREFINISHED ROOF TOP MECHANICAL SCREENS - CONSIGNATED LIGHT GREY
15	ILLUMINATED SKIMAE
16	EXTERIOR LIGHT FIXTURE - REFER TO SITE LIGHTING DWG
17	FLAT BOX ACCENT FINIS - LIGHT GREY
18	SPINNAKER RTU SCREEN SYSTEM



2 SOUTH ELEVATION
SCALE: 1:125



1 NORTH ELEVATION
SCALE: 1:125

no.	revisions	date	init.
2	RE-ISSUED FOR SPA	2023-09-01	RG.
1	RE-ISSUED FOR SPA	2022-11-16	RG.
0	ISSUED FOR SPA	2022-06-23	RG.

GENERAL NOTE:
THESE DRAWINGS ARE COPYRIGHT AND THE PROPERTY OF REINDERS + LAW LTD. THE DRAWINGS MAY NOT BE USED FOR CONSTRUCTION WITHOUT THE PERMISSION OF REINDERS + LAW LTD. AND UNLESS SEALED AND SIGNED BY THE ARCHITECT/ENGINEER REPRODUCTION OF THESE DRAWINGS WITHOUT THE CONSENT OF REINDERS + LAW LTD. IS STRICTLY PROHIBITED.
DO NOT SCALE THESE DRAWINGS. ANY ERROR OR DISCREPANCY IS TO BE REPORTED IMMEDIATELY TO: REINDERS + LAW LTD.

cad file: 21046_A200
date plotted: 2023-09-01



drawn	HA
designed	KR
reviewed	KR
date	2023-09-01
scale	1:125

project
SELF STOR
595 ELMIRA RD. N.
GUELPH, ONT.

drawing
BUILDING ELEVATIONS

REINDERS + LAW
ARCHITECTURE . ENGINEERING
REINDERS + LAW LTD.
ARCHITECTURE . ENGINEERING
64 ONTARIO STREET NORTH
MILTON, ON L9T 2T1
T. 905.457.1618 F. 905.457.8852
EMAIL@REINDERS.GA WWW.REINDERS.GA

drawing no.	rev. no.
21046_A200	2