

Attachment-1 Property Location and Photos Taken by Heritage Planning staff

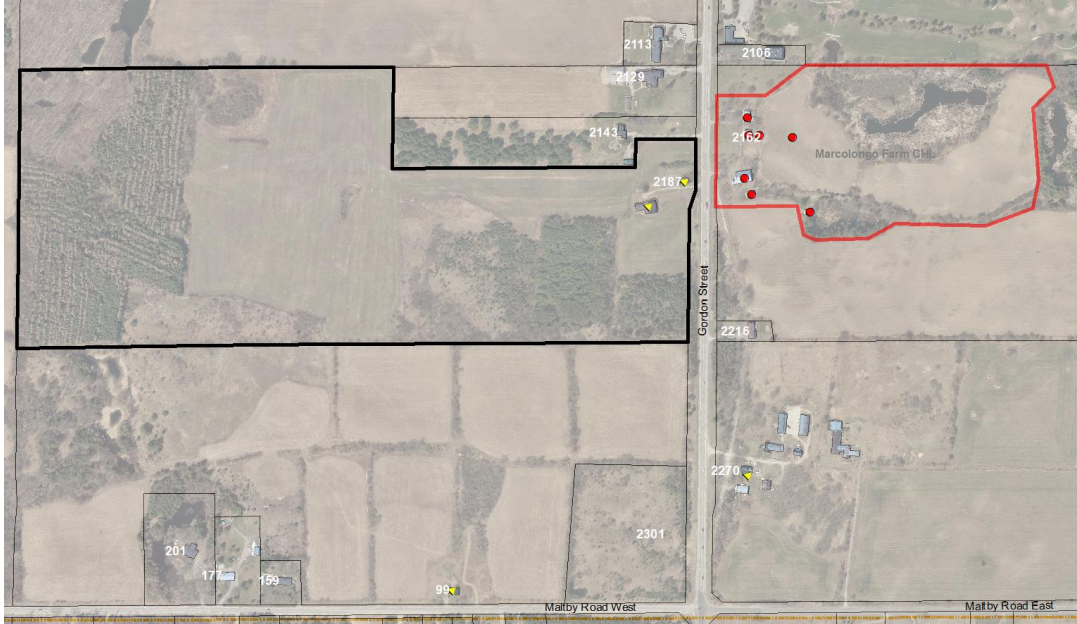


Figure 1 - Subject property identified in black outline (City of Guelph GIS).

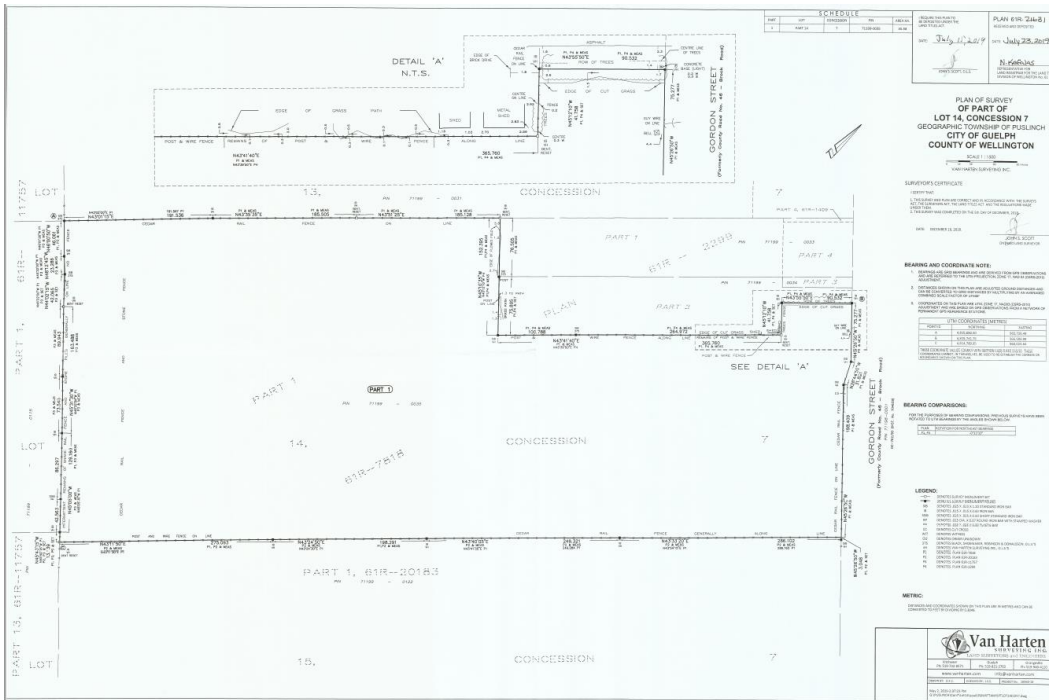


Figure 2 - Plan of Survey showing 61R-21631 (Van Harten Surveying, 2019)



Figure 3 - Location of subject buildings. (City of Guelph GIS).



Figure 4 - View west from Gordon Street. (Photo: S. Robinson of Heritage Planning taken July 26, 2023)



Figure 5: Photo of barn exterior. Taken July 27, 2023, by S. Robinson.



Figure 6: Photo of collapsed north stone wall. Taken July 27, 2023, by S. Robinson.

2019 June 17 – Photos taken by S. Robinson of Heritage Planning during site visit with owner (Mattamy Homes).



Figure 7: Photo of the barn's exterior. Taken June 17, 2019, by S. Robinson.



Figure 8: Photo of the barn's exterior. Taken June 17, 2019, by S. Robinson.



Figure 9: Photo of interior corner of north and east stone walls. Taken June 17, 2019, by S. Robinson.



Figure 10: Photo of the upper section removed from the barn's east interior wall. The ceiling of the wooden addition is visible through the space. Taken June 17, 2019, by S. Robinson.



Figure 11: Photo of one of the barn's slots from the interior and looking out to the field in the west of the property. Taken June 17, 2019, by S. Robinson.



Figure 12: Photo of the barn's exterior – southwest corner. Taken June 17, 2019, by S. Robinson.



Figure 13: Photo of the stone barn's southern, 2-storey exterior. Taken June 17, 2019, by S. Robinson.



Figure 14: Photo of the basement stalls of the stone barn. Taken June 17, 2019, by S. Robinson.



Figure 15: Photo of the James Kidd barn from City of Guelph Inventory of Heritage Structures, 2003.

Blair farmhouse



Figure 16: Image of front exterior of the poured-concrete farmhouse. Taken January 24, 2019, by S. Robinson.



Figure 17: Image of rear exterior extension of the poured-concrete farmhouse. Taken January 24, 2019, by S. Robinson.



Figure 9: Photo of the Blair farmhouse from City of Guelph Inventory of Heritage Structures, 2003.