

# Attachment-2 Historic Images and Documents of 167 Suffolk Street West



Figure 1 – Plan 8 of the Town of Guelph, approximate location of 167 Suffolk Street West indicated in red.



Figure 2 – Map of the Town of Guelph, Thomas W. Cooper (1862) with 167 Suffolk Street West indicated in red.

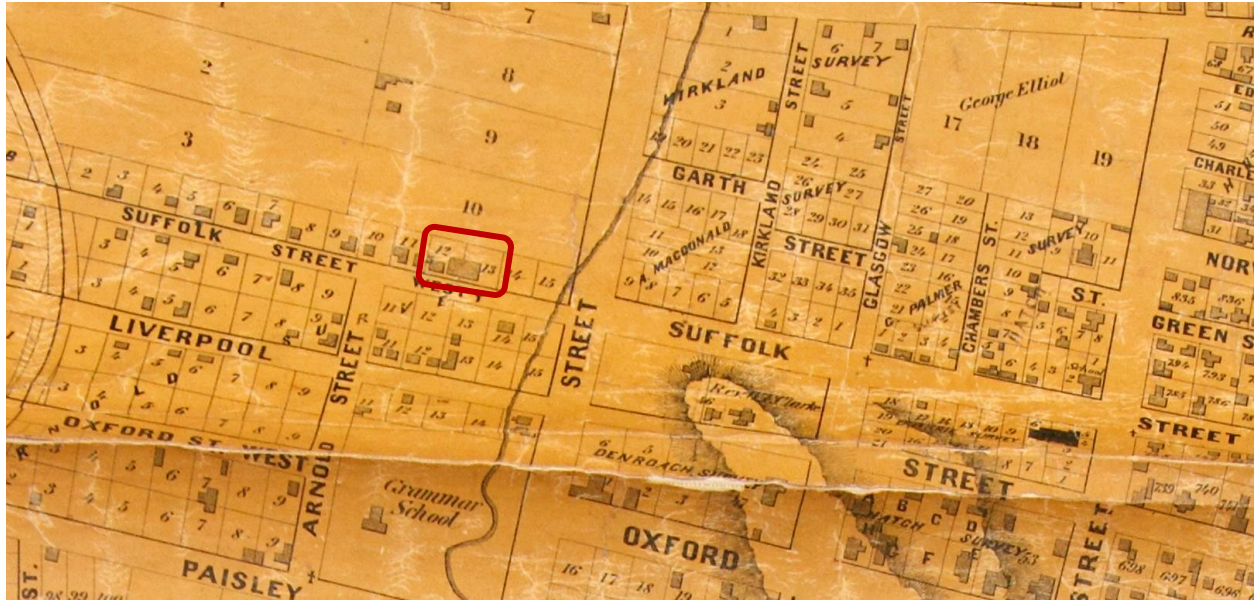
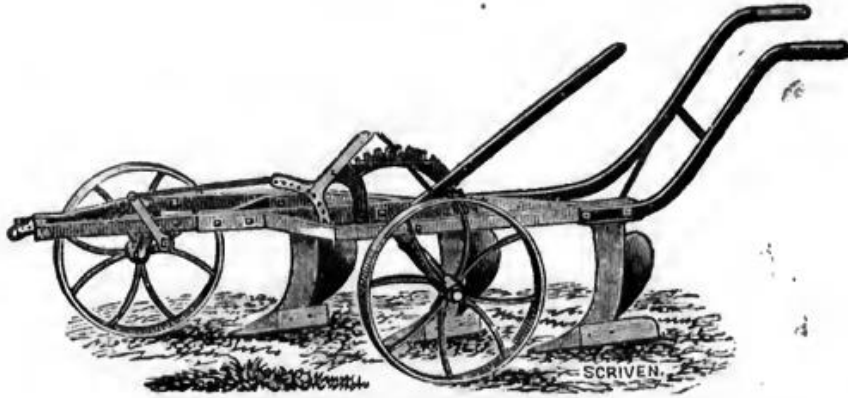


Figure 3 – Map of the Town of Guelph, T.W. Cooper (1877), the factory is show on Lots 12 and 13.

**COSSITT'S  
AGRICULTURAL IMPLEMENT WORKS  
GUELPH, ONT.**



Buy only the genuine FARMER'S FRIEND GANG PLOW, patented  
March 1875. Send for circular and terms.

**L. COSSITT,**

Manufacturer of Gang Plows, Fanning Mills, Horse Turnip Seed Drills,  
Horse and Hand Power Feed Cutters, Lawn Mowers, Horse Pokes, &c.

Figure 4 – Advertisement for Cossitt's Agricultural Implement Works from 1875 (The Annals of the Town of Guelph 1827-1877, pg. 166).



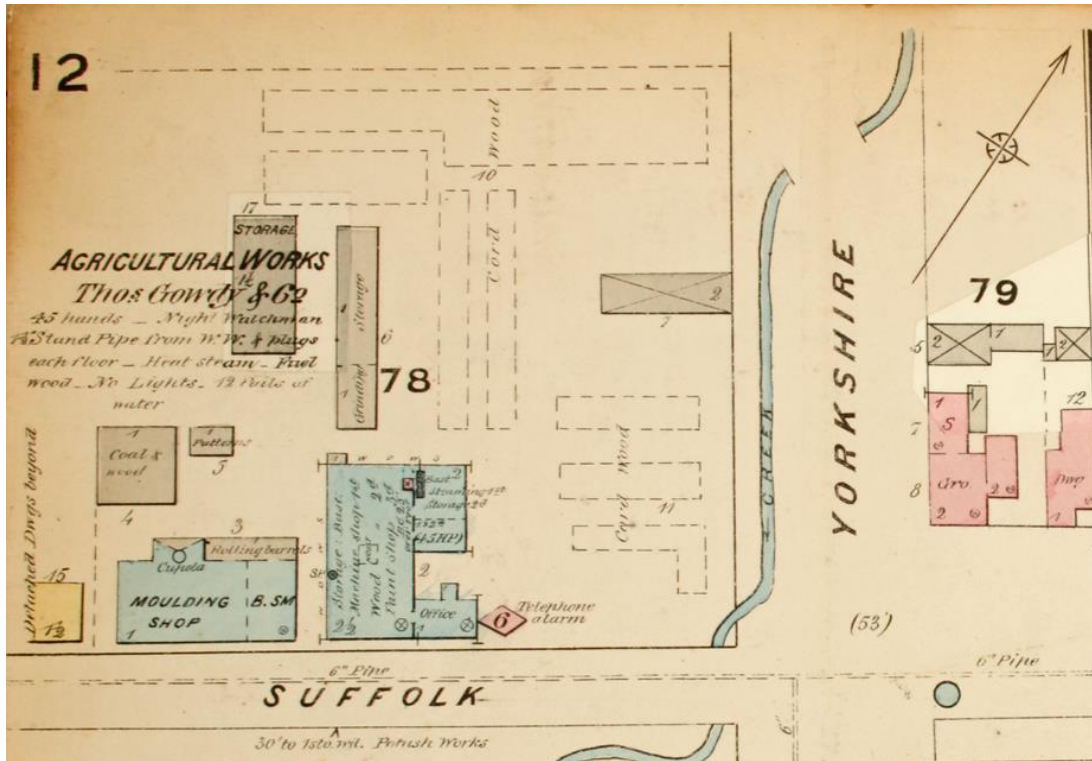


Figure 5 - Fire Insurance Plan showing 167 Suffolk Street West and the Gowdy Agricultural Works, 1881 revised 1892(Guelph Civic Museum)

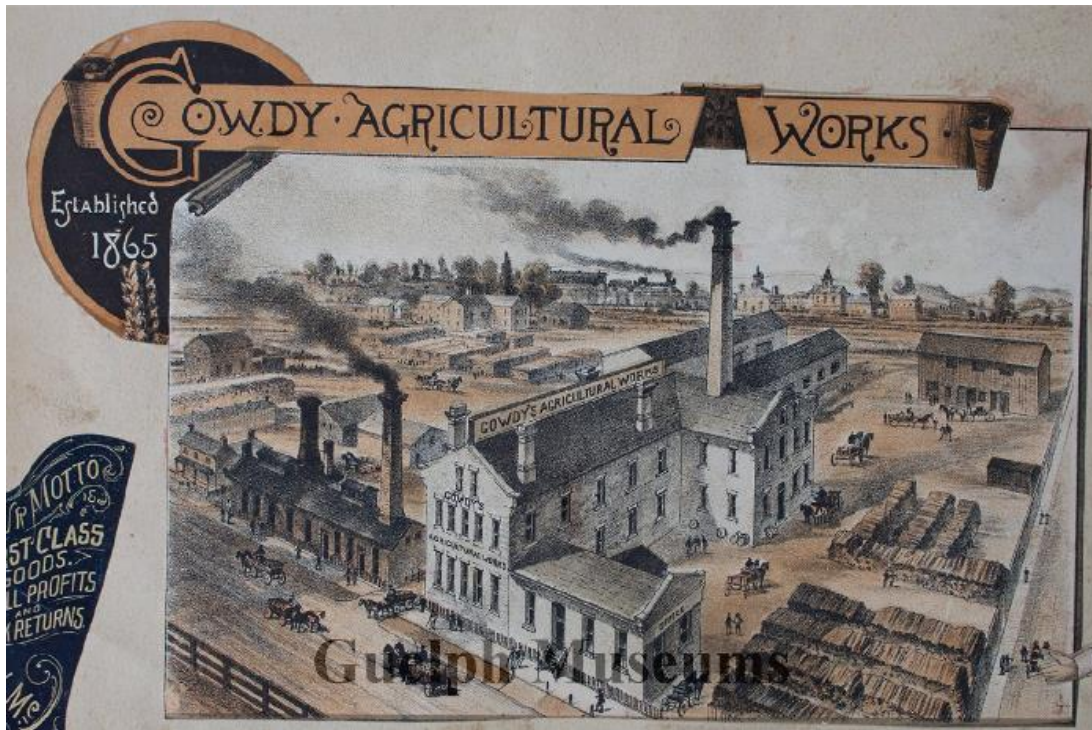


Figure 6 - Image of the Gowdy Agricultural Works located at 167 Suffolk Street (Guelph Civic Museum 2016.24.3)

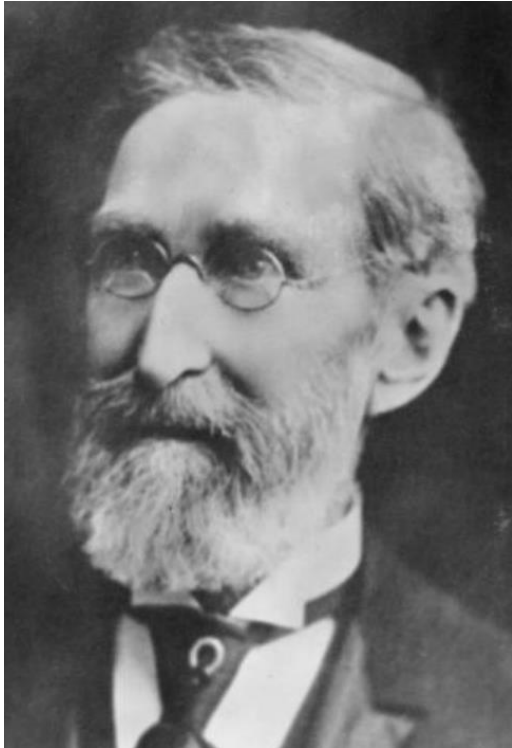


Figure 7 – Image of Thomas Gowdy, Mayor of Guelph from 1899-1890 (Guelph Public Library, F38-0-4-0-0-6 - Thomas Gowdy)

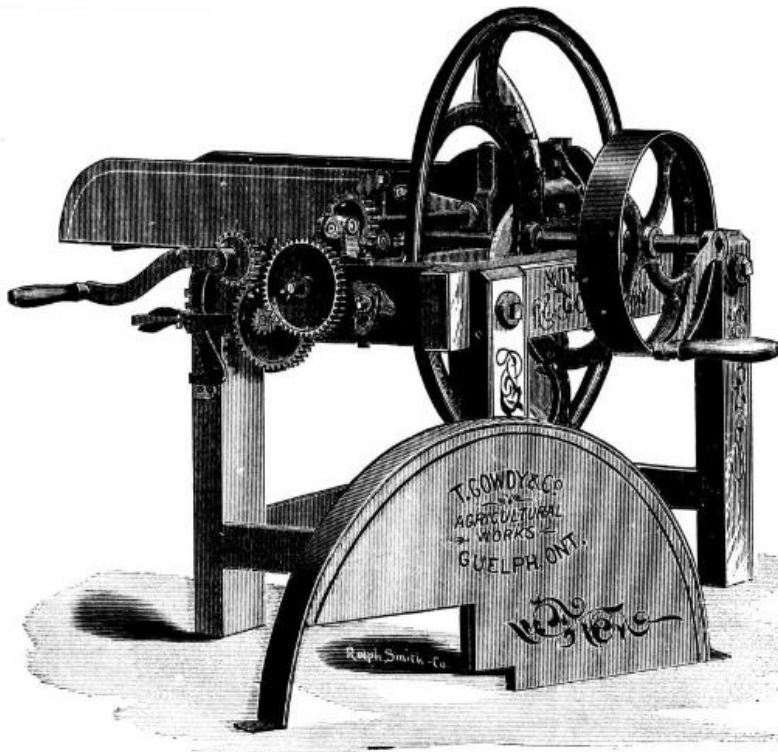


Figure 8 – Image of a piece of Gowdy Agricultural Works equipment (Industries of Canada, 1886, pg. 108)



Figure 9 – Image of Guelph Bay, cottage country of Guelph’s industrial elite, 1910 (Toronto Public Library PCR-917)

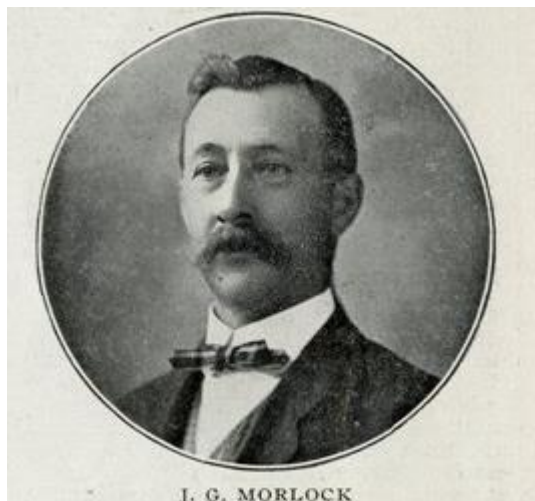


Figure 10 – Image of John G. Morlock, owner of Morlock Bros Company, who operated out of 167 Suffolk Street West in the early 20<sup>th</sup> century (Guelph Public Library 1974.15.7, pg. 47).





Figure 11 - Image of William Morlock, owner of Morlock Bros Company, who operated out of 167 Suffolk Street West in the early 20<sup>th</sup> century (Guelph Public Library 1974.15.7, pg. 47).

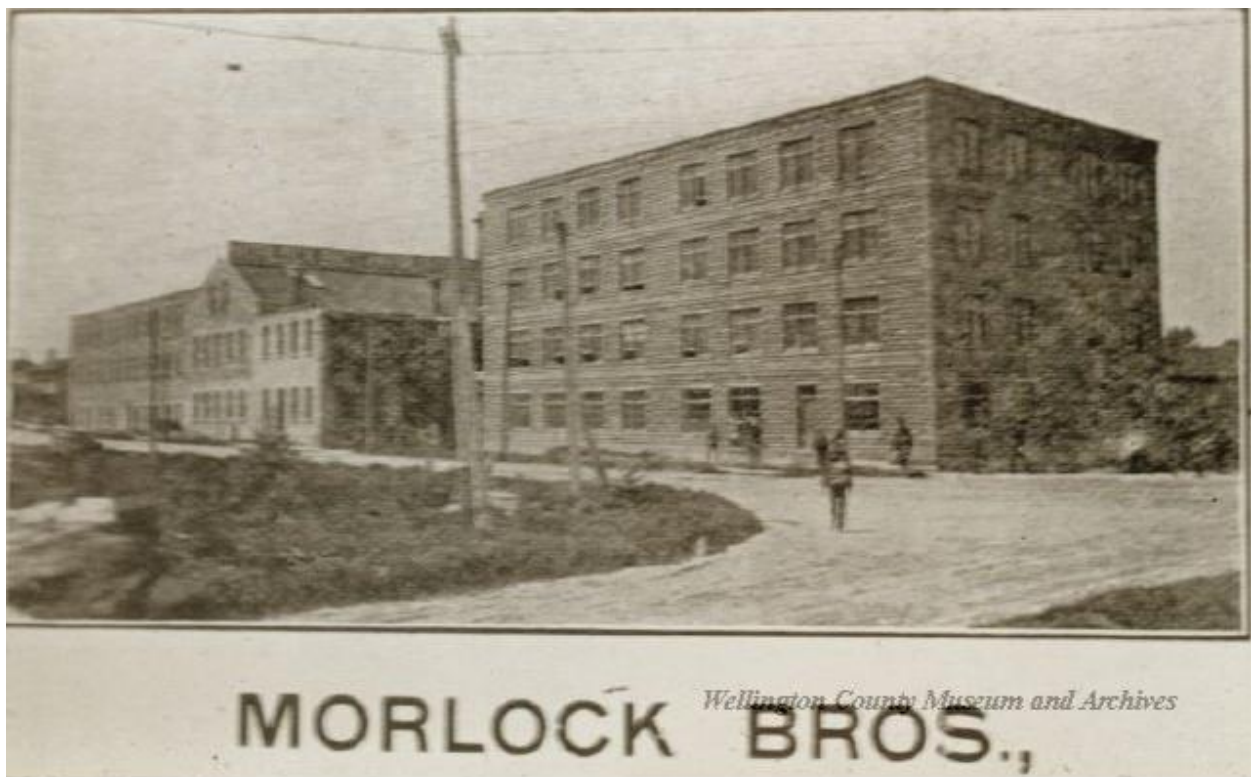


Figure 12 - Image of the Morlock Bros. factory at 167 Suffolk Street West, including the western addition, in 1908 (Wellington County Archives A1985.110)





Figure 15 – Image of 167 Suffolk Street from 1977 with the Holman Luggage insignia on the limestone façade (Wellington County Archives A1985.110)