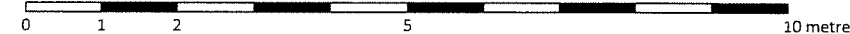


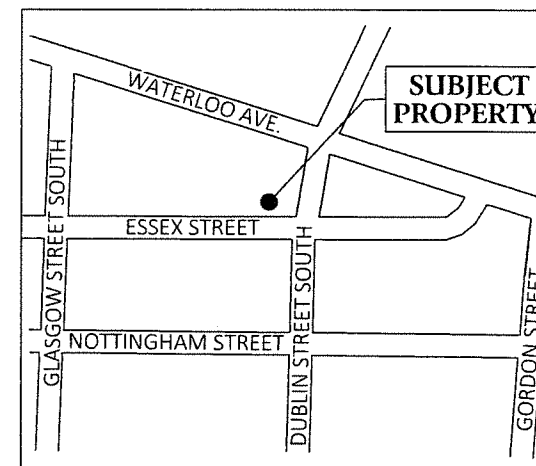
**EASEMENT SKETCH  
PART OF LOT 385,  
REGISTERED PLAN 8  
CITY OF GUELPH  
COUNTY OF WELLINGTON**

SCALE 1 : 100



VAN HARTEN SURVEYING INC.

KEYMAP:



NOTES:

1. THIS IS NOT A PLAN OF SURVEY AND SHOULD NOT BE USED FOR REAL ESTATE TRANSFERS OR MORTGAGES.
2. SUBJECT LANDS ARE ZONED RESIDENTIAL RL.1 and R.1B.
3. SUBJECT LANDS HAVE AN OFFICIAL PLAN DESIGNATION OF LOW DENSITY RESIDENTIAL.
4. DISTANCES ON THIS PLAN ARE SHOWN IN METRES AND CAN BE CONVERTED TO FEET BY DIVIDING BY 0.3048.
5. DIMENSIONS ON THIS SKETCH ARE APPROXIMATE AND HAVE NOT BEEN VERIFIED BY SURVEY.

**SURVEYOR'S CERTIFICATE:**  
THIS SKETCH WAS PREPARED  
ON THE 5th DAY OF OCTOBER, 2023

*Jeffrey E. Buisman*  
**JEFFREY E. BUISMAN**  
ONTARIO LAND SURVEYOR



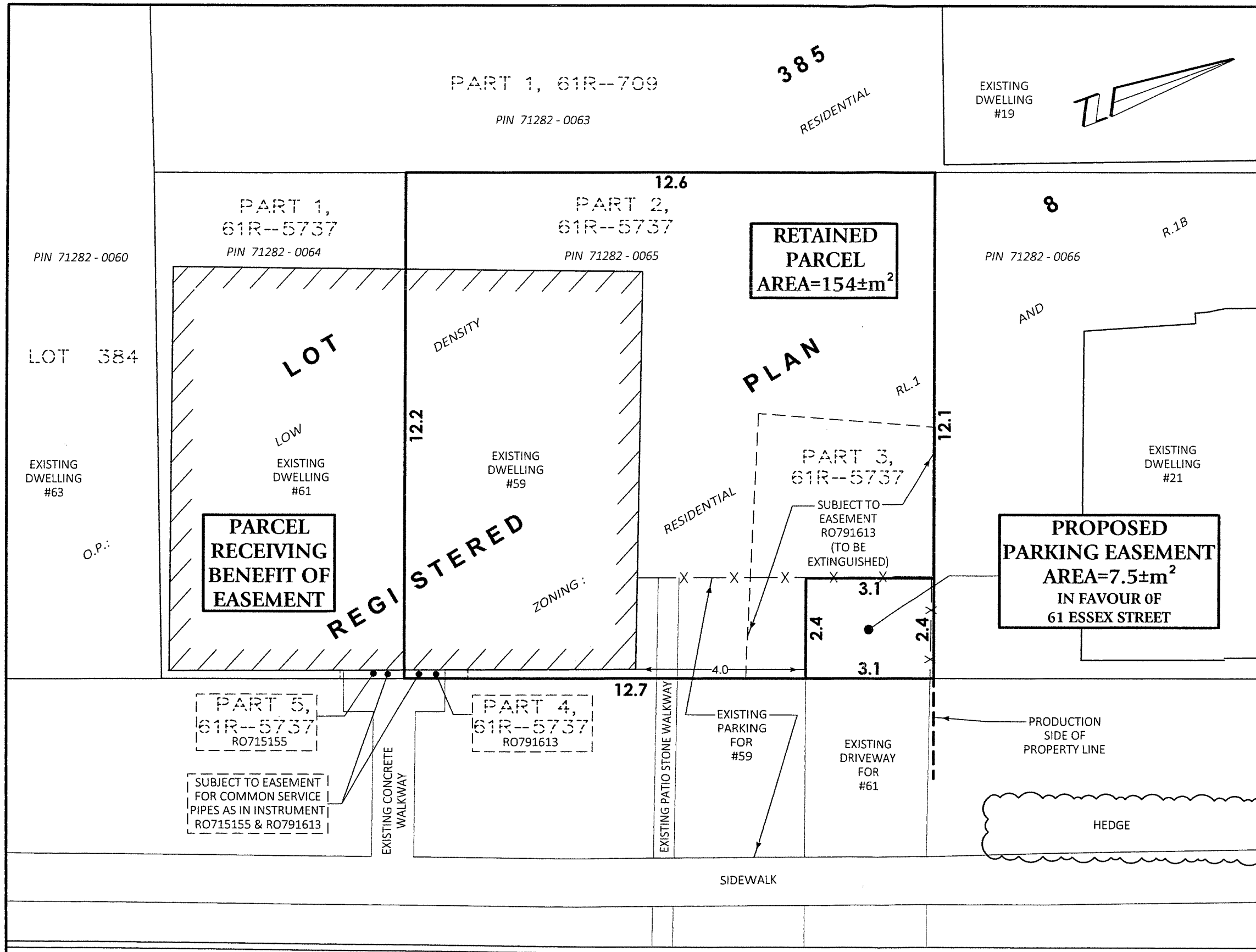
Kitchener/Waterloo Ph: 519-742-8371	Guelph Ph: 519-821-2763	Orangeville Ph: 519-940-4110
--	----------------------------	---------------------------------

www.vanharten.com info@vanharten.com

DRAWN BY: AN CHECKED BY: JEB PROJECT No. 32778-23

Oct 5, 2023-9:14:34 AM  
G:\GUELPH\008\379-390\Acad\SKETCH LOT 385 (SHOOK) UTM 2010.dwg

© 2023 THIS SKETCH IS PROTECTED BY COPYRIGHT



**ESSEX STREET**

ESTABLISHED BY REGISTERED PLAN 8  
PIN 71282-0163  
20.12m WIDE