



Clair-Maltby

Open Space System Strategy

Committee of the Whole

March 2, 2020

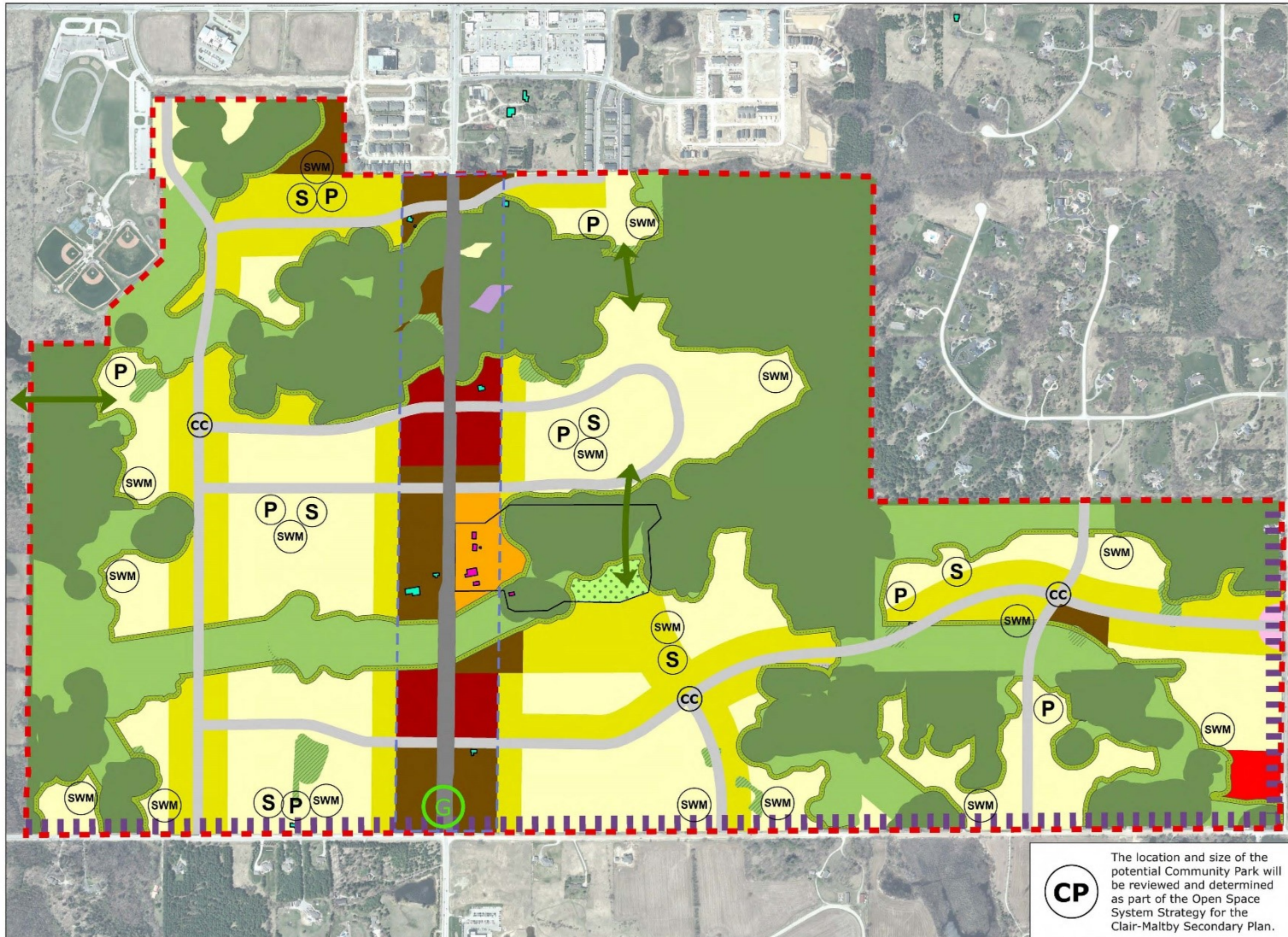


Recommendation

- That Council approve the CMSP Open Space System Strategy as the basis for the preparation of the draft secondary plan
- Available at:
guelph.ca/clair-maltby
>documents

PREFERRED COMMUNITY STRUCTURE:

Council Endorsed May 13, 2019



Legend

- Clair-Maltby Secondary Plan Boundary
- Cultural Heritage Landscape (designated)
- Heritage Buildings (designated)
- Heritage Buildings (listed)
- Gordon Street Corridor
- Urban-Rural Transition Zone

Streets and Trails

- Existing Street Network
- Proposed Street and Cycling Network

Parks, Schools, and Features

- Potential Neighbourhood Parks
- Potential Community Park (location to be determined)
- Potential Stormwater Management Areas
- Potential Elementary Schools
- Convenience Commercial Area Gateway
- Gateway
- Proposed Moraine Ribbon
- Potential Active Transportation Link

Refined Natural Heritage System

- Does Not Permit Essential Transportation Infrastructure
- May Permit Essential Transportation Infrastructure
- Natural Areas Overlay (May Permit Essential Transportation Infrastructure)
- Restoration Area (Does Not Permit Essential Transportation Infrastructure)

Land Use

- Low Density (Residential)
- Medium Density (Residential)
- High Density (Residential)
- Mixed-use
- Neighbourhood Commercial
- Service Commercial
- Mixed Office / Commercial
- Open Space

The location and size of the potential Community Park will be reviewed and determined as part of the Open Space System Strategy for the Clair-Maltby Secondary Plan.



What is the open space system?

The City's open space system is comprised of trails, parks and other open spaces that accommodate a variety of recreational pursuits

Clair-Maltby's Recommended Open Space System:

Community Park
Neighbourhood Parks
Moraine Ribbon
Trails



Assumptions

- NHS is not a component of the open space system
- Detailed park programming and trail mapping is not being developed at this time



Assumptions (continued)

- Open space planning was not influenced by existing or potential future property lines or plans for development
- The financial feasibility still needs to be explored and may impact any final recommendations



Community Engagement

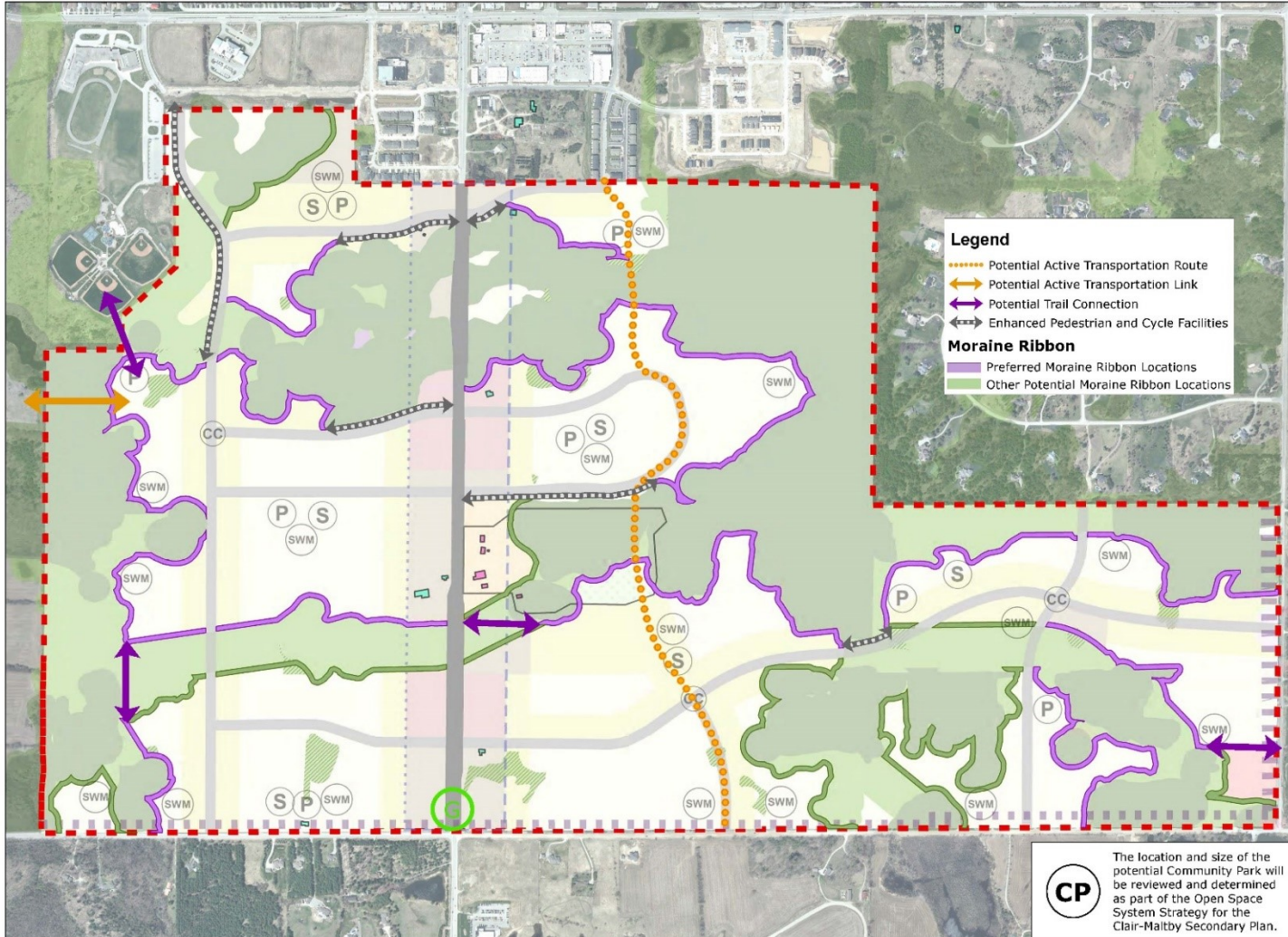
Round 1	<p>Workshops: September 25, 2019 Online: September 30 – October 14</p> <ul style="list-style-type: none">-Feedback on the size, function and location of the potential community park-Feedback on the proposed moraine ribbon
Round 2	<p>Workshops: November 19, 2019 Online: November 21 – December 5</p> <ul style="list-style-type: none">-Presented summary of feedback from Round 1-Feedback on the pros and cons of the short list of community park options-Feedback on the prioritized locations for the moraine ribbon



Youth Workshops

Nov. 14, 2019	Centennial Collegiate Vocational Institute 4 workshops 159 students
Nov. 21, 2019	Bishop Macdonell Catholic High School 2 workshops 58 students

Preferred Moraine Ribbon Locations



Legend

- Clair-Malby Secondary Plan Boundary
- Cultural Heritage Landscape (designated)
- Heritage Buildings (designated)
- Heritage Buildings (listed)
- Gordon Street Corridor
- Urban-Rural Transition Zone

Streets and Trails

- Existing Street Network
- Proposed Street and Cycling Network

Parks, Schools, and Features

- P Potential Neighbourhood Parks
- CP Potential Community Park (location to be determined)
- SWM Potential Stormwater Management Areas
- S Potential Elementary Schools
- CC Convenience Commercial Area
- G Gateway

Refined Natural Heritage System

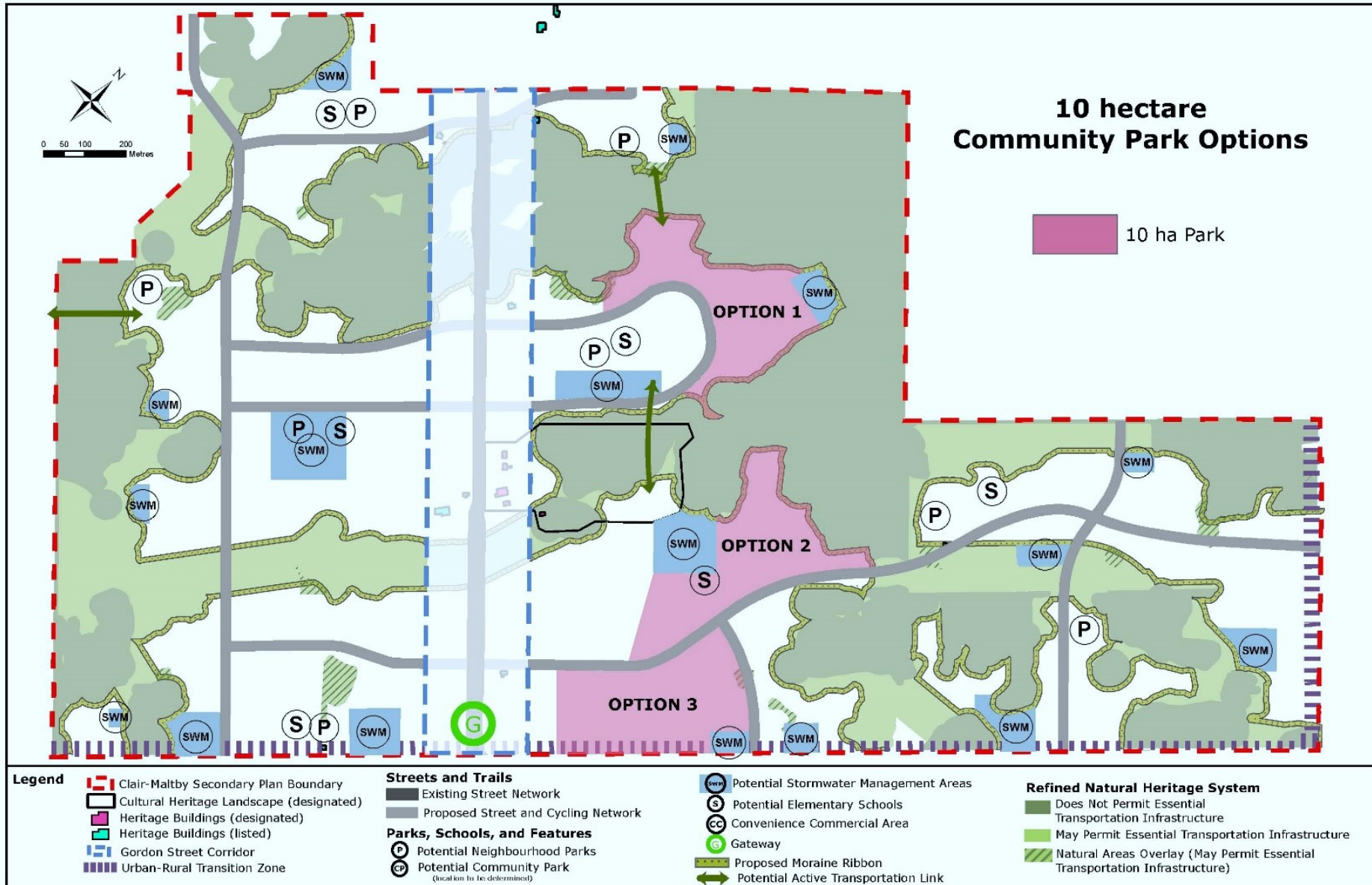
- Does Not Permit Essential Transportation Infrastructure
- May Permit Essential Transportation Infrastructure
- Natural Areas Overlay (May Permit Essential Transportation Infrastructure)
- Restoration Area (Does Not Permit Essential Transportation Infrastructure)

Land Use

- Low Density (Residential)
- Medium Density (Residential)
- High Density (Residential)
- Mixed-use
- Neighbourhood Commercial
- Service Commercial
- Mixed Office / Commercial
- Open Space

CP The location and size of the potential Community Park will be reviewed and determined as part of the Open Space System Strategy for the Clair-Malby Secondary Plan.

Community Park Process



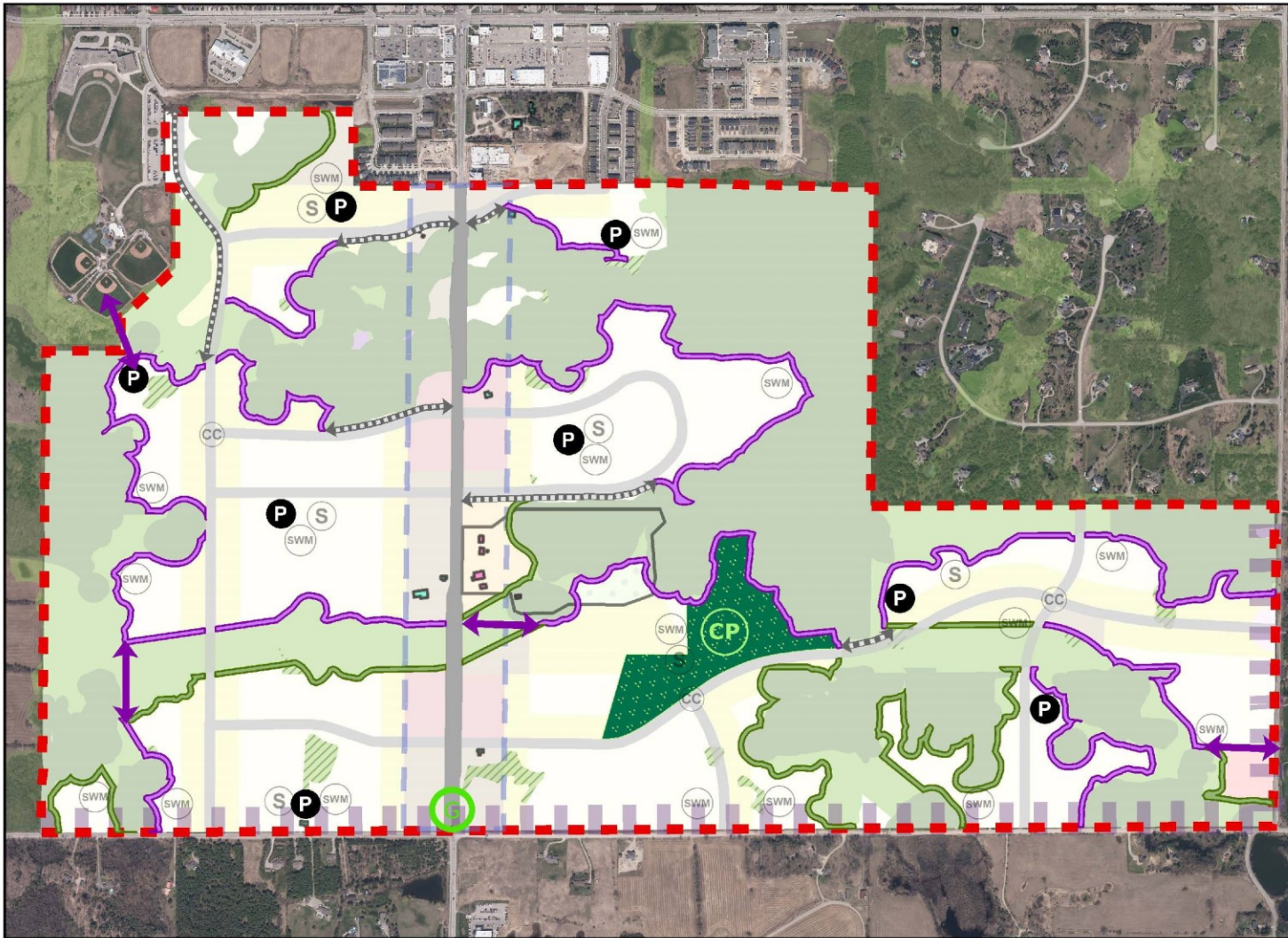


Technical review of shortlist

Other considerations involved in identifying a preferred community park location:

- Will the size accommodate the intended community park function including active and passive uses?
- Is it a centralized and walkable location?
- Is the location accessible by all modes of transportation?
- Does the location abut the NHS?
- Can the existing topography accommodate the community park?

COMPONENTS OF RECOMMENDED OPEN SPACE SYSTEM



Legend


- - - Clair-Maltby Secondary Plan Boundary

Open Space System Components

- CP Community Park
- P Potential Neighbourhood Parks
- Preferred Moraine Ribbon Locations
- Other Potential Moraine Ribbon Locations
- ↔ Potential Trail Connection
- ↔ Enhanced Pedestrian & Cycle Facilities

Note:

Other elements of the preferred Community Concept Plan endorsed by Council in May 2019 are shown underlying the Open Space System components for context only.



Open Space System Strategy Directions

The directions document will inform the final secondary plan and focuses on the following key components:

1. Community Park
2. Neighbourhood Parks
3. Moraine Ribbon
4. Trails



Financial considerations

- The appropriate option for acquisition of lands will be determined at the time of development and/or acquisition
- The estimated cost of the Open Space System will be included in the Financial Impact Assessment to be completed for the CMSP in its entirety. The financial feasibility may impact any final recommendations



Recommendation

That Council approve the **Policy Directions for the Clair-Maltby Open Space System Strategy** as the basis for the preparation of the draft secondary plan