

Attachment-2 Historical Maps, Documents and Photographs



Figure 1 - Detail from Plan 99 (Fergusson's Survey) registered in 1858.



Figure 2 - Detail from Cooper's Map of the Town of Guelph (1862) showing a building footprint at the northwest corner of Eramosa Road and Perth St. (Guelph Civic Museum)



Figure 3 - Detail from Bird's Eye Map of Guelph, 1872 (Guelph Civic Museum)



Figure 4 - Detail from Cooper's Map of the Town of Guelph (1875) indicating "Fergusson Survey" and showing a building footprint at the northwest corner of Eramosa Road and Perth St. (Guelph Civic Museum)

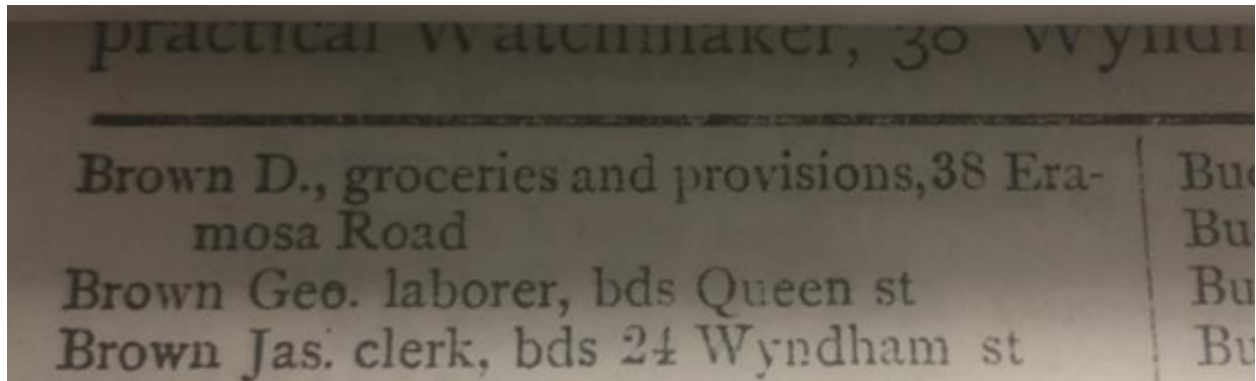


Figure 5: Hacking Directory (1873) indicates David Brown, groceries and provisions

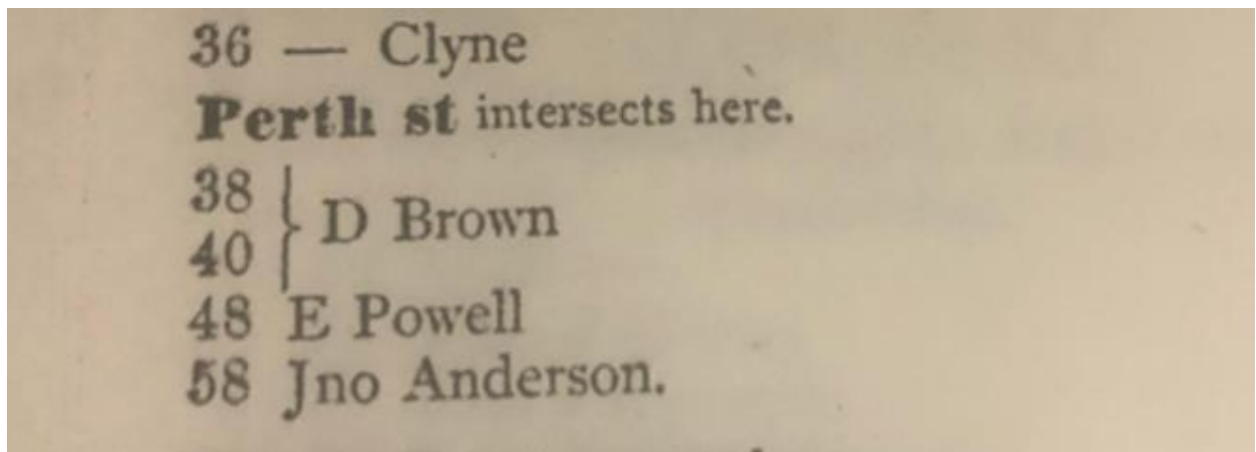


Figure 6: Hacking Directory (1873) David Brown indicated as owner and resident of the single building at 38 and 40 Eramosa Road.

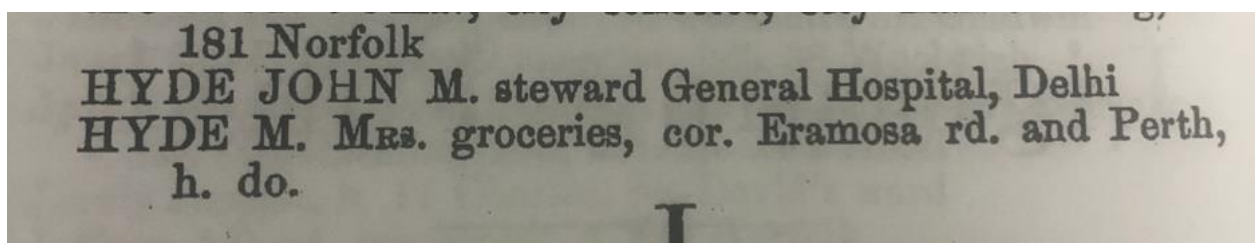


Figure 7: 1882 City Directory, Mrs. M. Hyde Grocer and resident

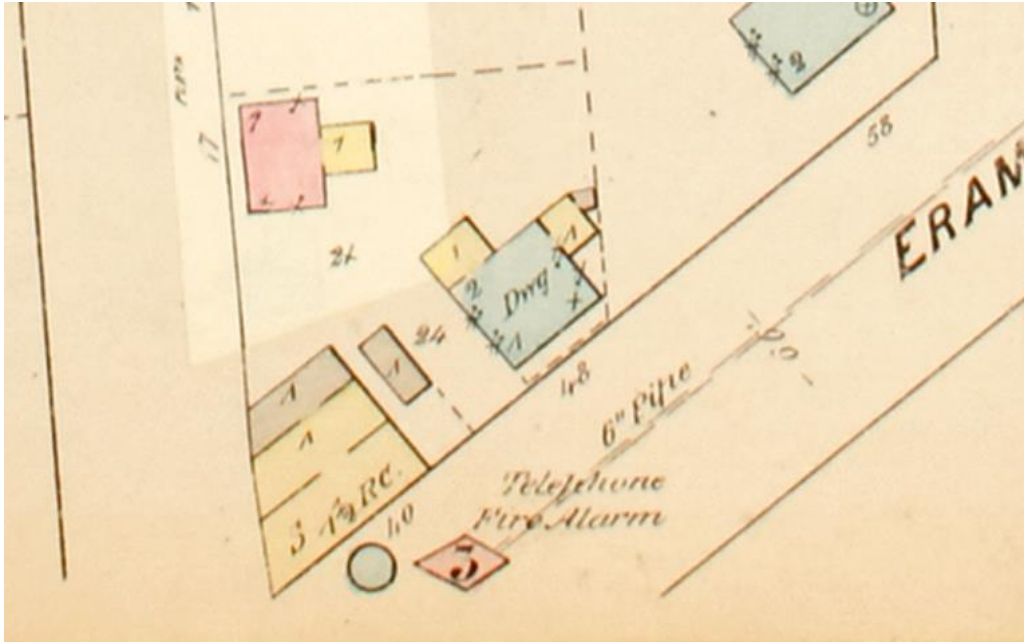


Figure 8 - Detail from 1881 (revised 1892) Fire Insurance Plan. (Guelph Civic Museum)

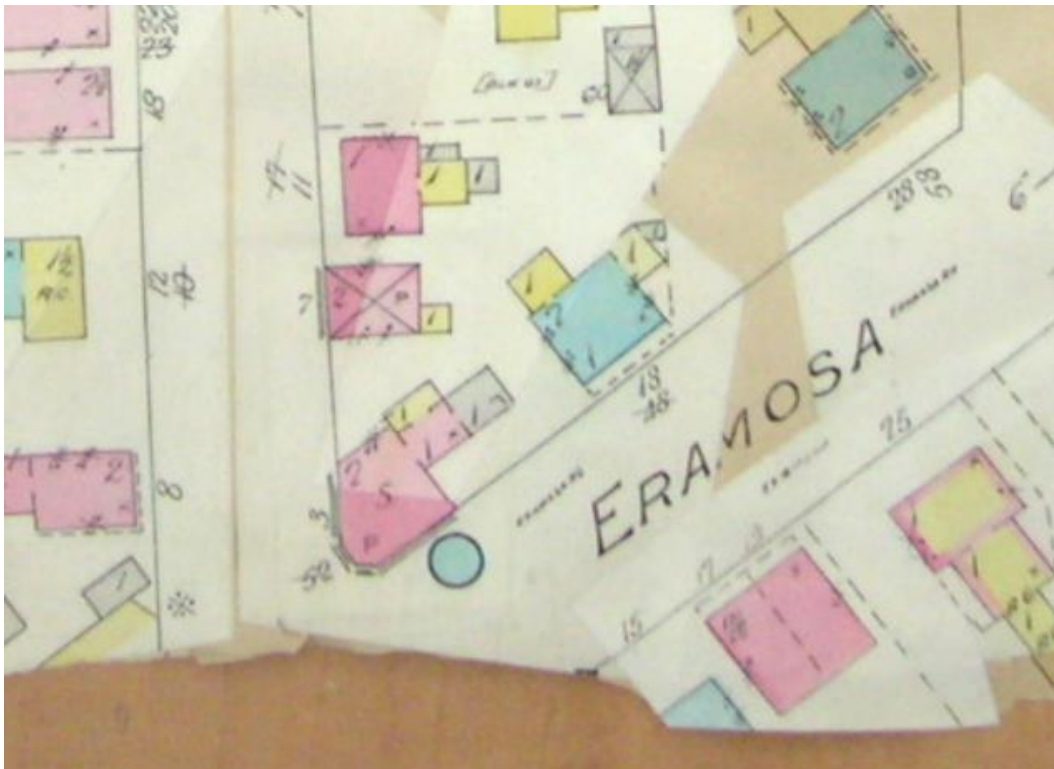


Figure 9 - Detail from 1897 (revised 1907) Fire Insurance Plan. (Guelph Civic Museum)



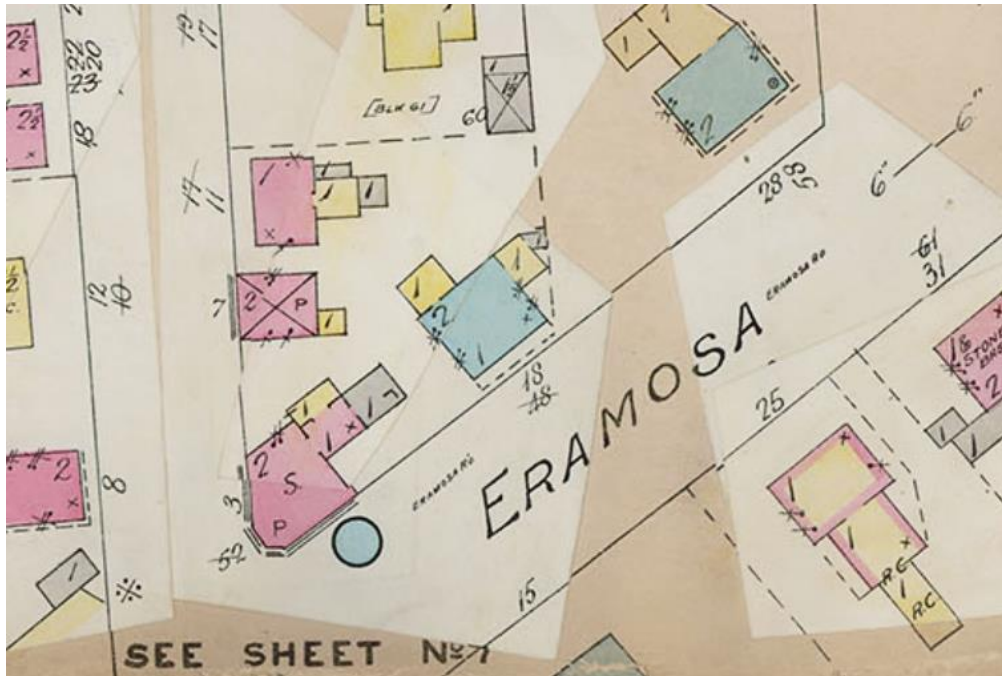


Figure 10 - Detail from 1897 (revised 1911) Fire Insurance Plan. (Guelph Civic Museum)

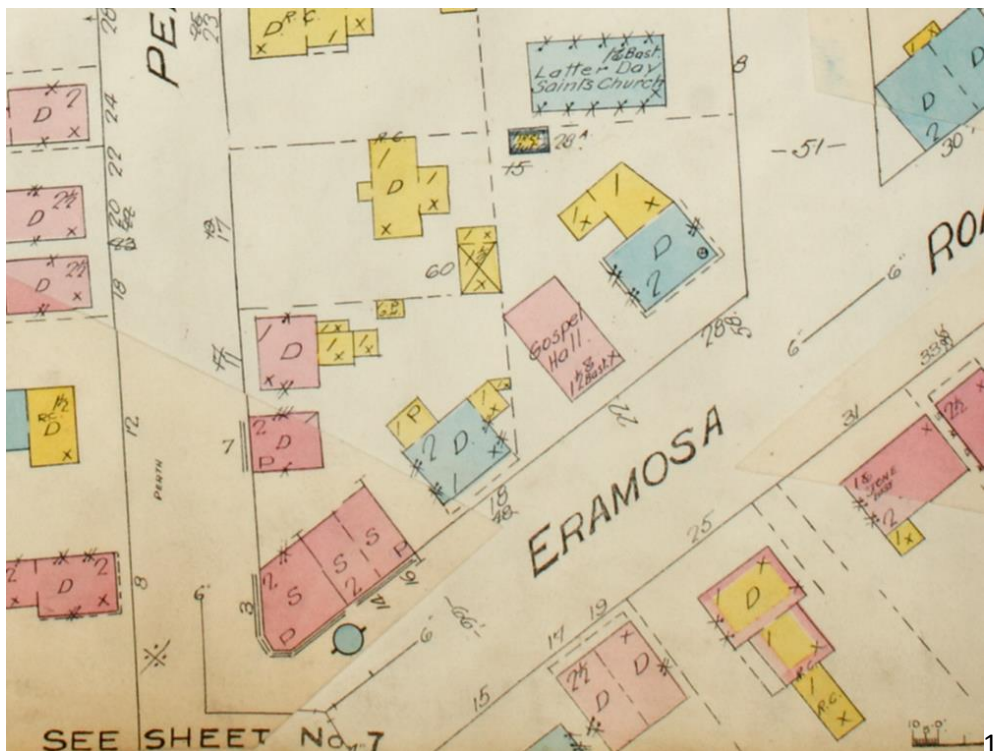


Figure 11 - Detail from 1922 (revised 1929) Fire Insurance Plan. (Guelph Civic Museum)

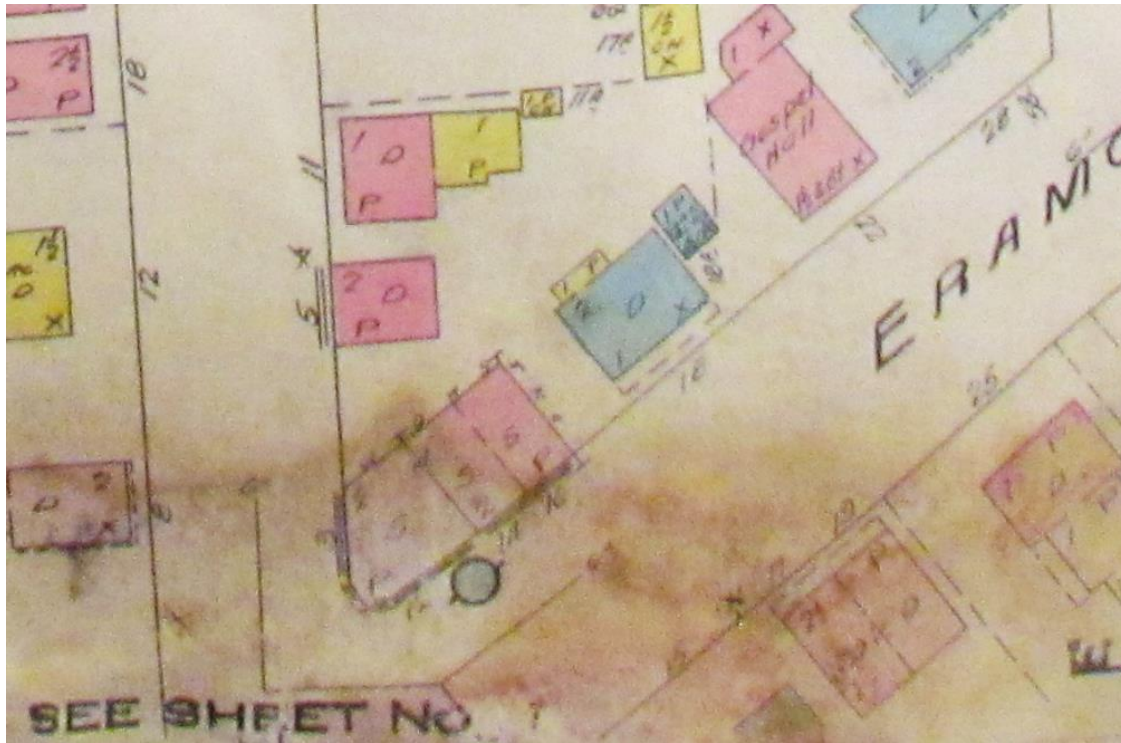


Figure 12 - Detail from 1946 Fire Insurance Plan. (Guelph Civic Museum)

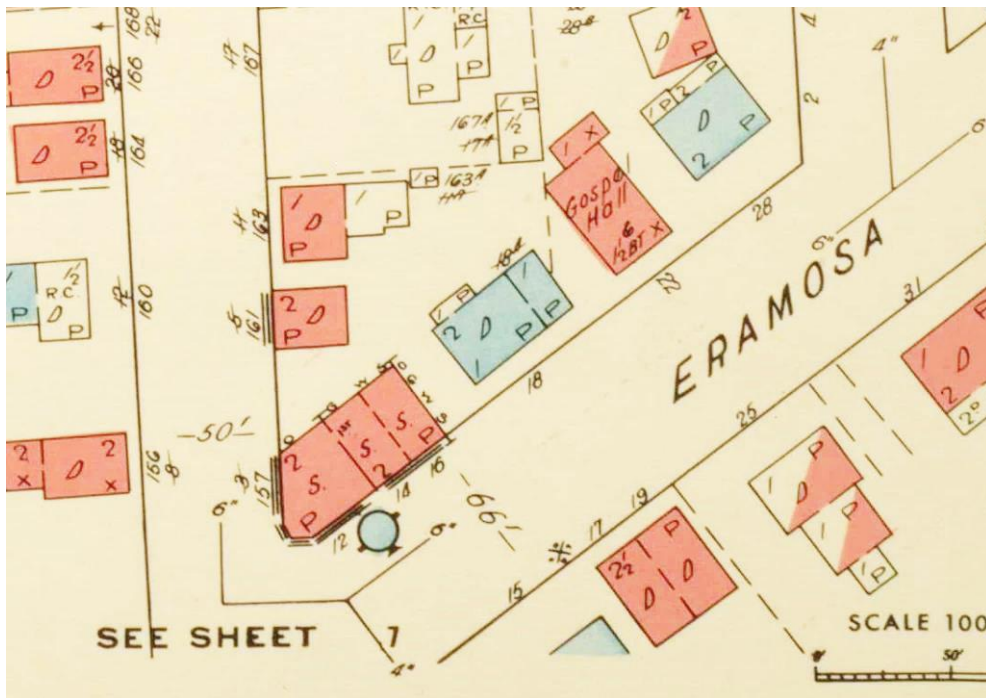


Figure 13 - Detail from 1960 Fire Insurance Plan. (Guelph Civic Museum)



Figure 14 - Photo of property in 1974. (Couling Architectural Inventory)



Figure 15 - Photo of property in 1975. (Couling Architectural Inventory)





Figure 16 - Photo of property in 1974. (Couling Architectural Inventory)



Figure 17 - Stable building facing Arthur St N before black paint applied. (Photo: S. Robinson, 2014)