

# Advisory Committee of Council Staff Report



---

To Accessibility Advisory Committee  
Date Monday, December 4, 2023  
Subject **Silvercreek Park Washroom Renovations & Pavilion Replacement**

---

## Recommendation

1. That the Accessibility Advisory Committee supports renovations to the existing Silvercreek Park washrooms, the replacement of the pavilion, the new trail design, new fixed seating, the new accessible parking spot and supports the overall design.
- 

## Executive Summary

### Purpose of Report

The public washrooms at Silvercreek Park, located at 142 Edinburgh Road South, and the surrounding site are being renovated in 2024 and staff are looking for the support of the Accessibility Advisory Committee when it comes to the overall design.

### Key Findings

An area of Silvercreek Park is being upgraded in 2024 and this includes FADM compliant renovations to the existing washrooms which will now also be heated/open year-round. Additional work includes the replacement of the existing pavilion, an accessible parking spot, a trail connecting the parking lot/washroom/pavilion and new fixed accessible seating.

### Strategic Plan Alignment

Grow and care for our community spaces and places – Attract more people to our parks and programs by making them easier to access and enjoy.

### Financial Implications

The renovations to the washrooms/site are being funded from PO0034 and the pavilion replacement is being funded from PO0025.

---

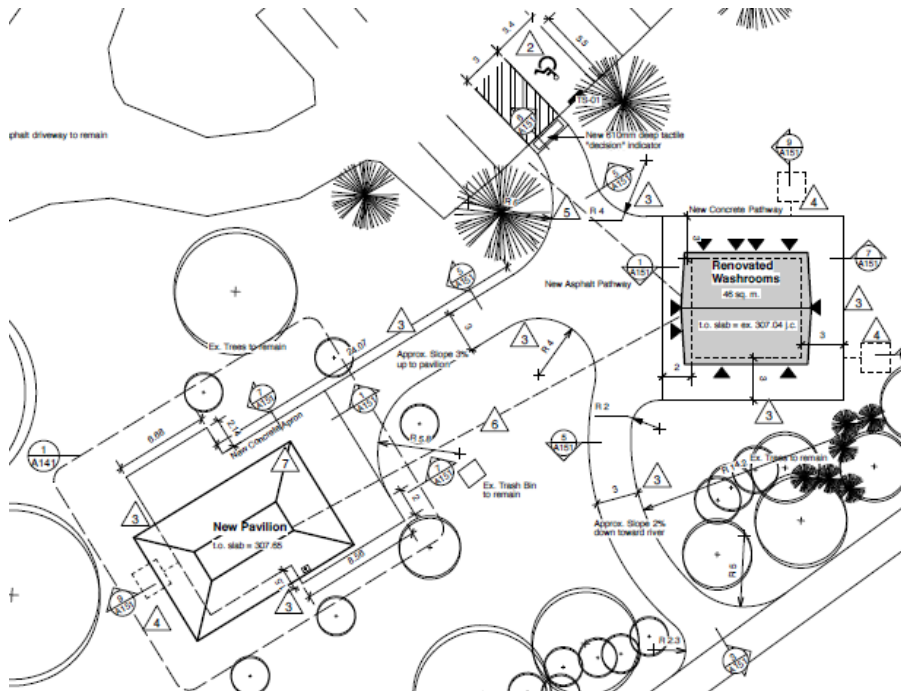
## Report

The public washrooms at Silvercreek Park, located at 142 Edinburgh Road South, and the surrounding site are being renovated in 2024. The current washrooms/site has reached the end of its useful life/isn't FADM compliant and the existing trail only goes from the parking lot to the washroom building. It currently doesn't connect to the existing pavilion or the trail that runs along the river. See image below for existing site conditions.

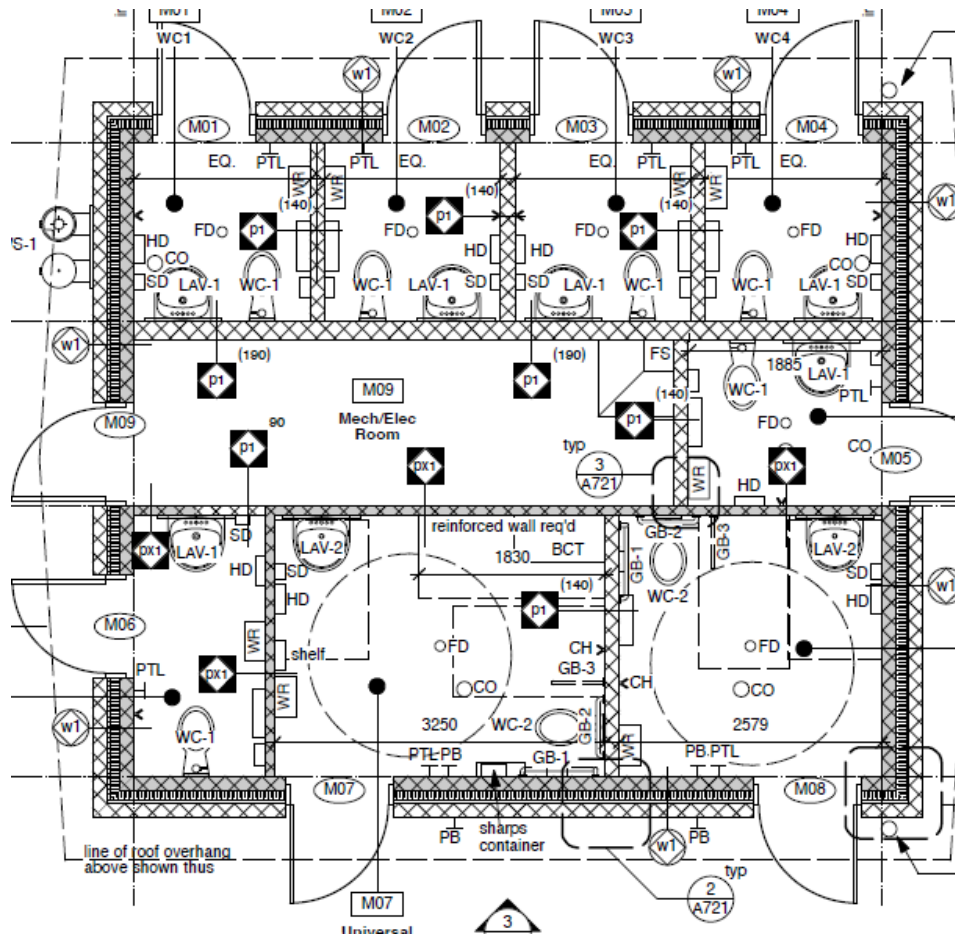


The upcoming scope of work includes FADM compliant renovations to the existing washrooms which will now also be heated/open year-round, an accessible parking spot, trail improvements/connections, a replacement pavilion and accessible seating. Out of scope includes site work outside the project area mentioned above and other park amenities (garbage cans, signage, etc.).

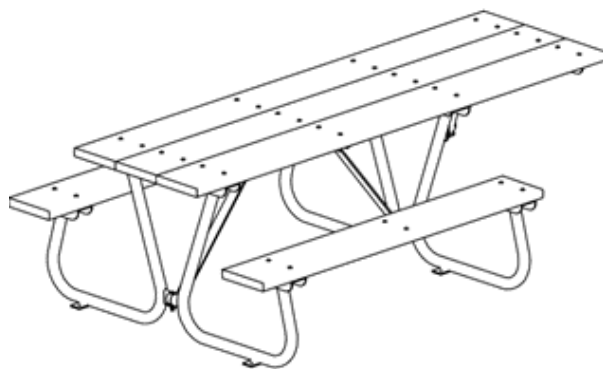
In the image below you can see the one new accessible parking spot and 3m wide asphalt trail connecting the parking lot to the washrooms, the pavilion and the existing riverside trail. The new trails are durable, ensure proper water drainage and have slopes up to 3%.



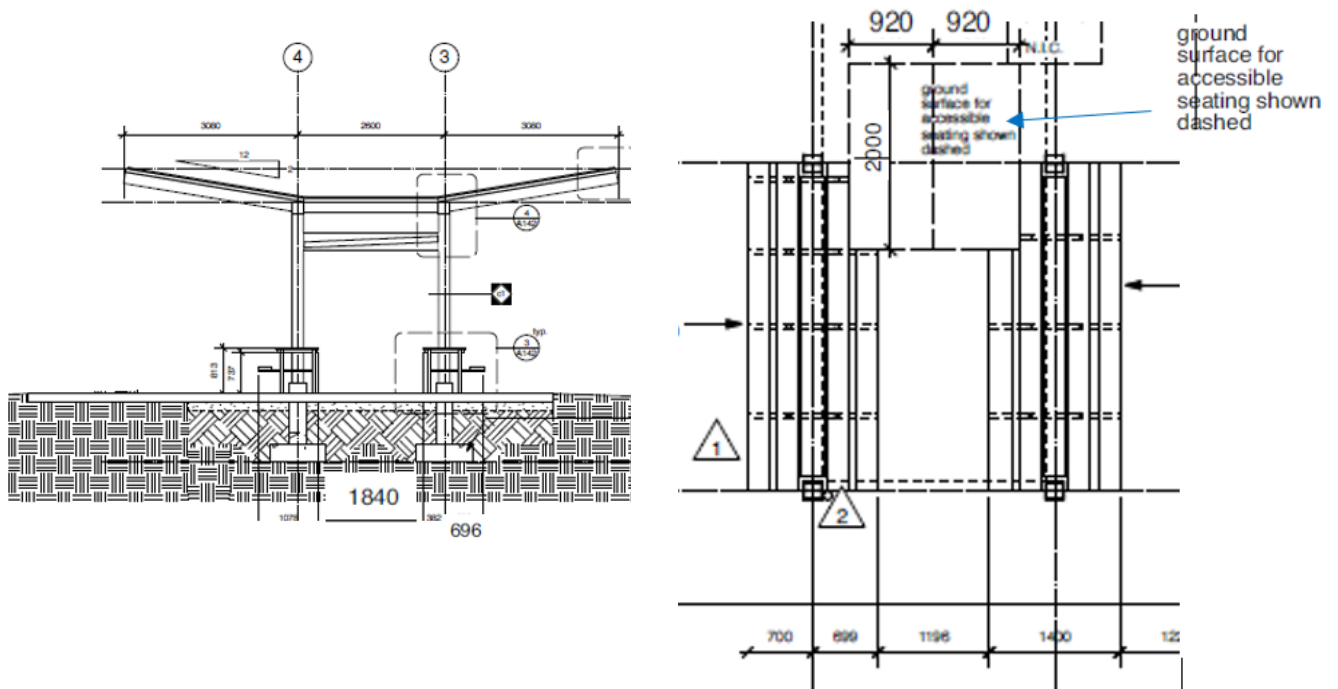
In the image below we see the new washroom floor plan, that is both FADM compliant and gender neutral, with one universal washroom, one barrier free washroom and six individual washrooms.



The existing shade pavilion will be replaced and fixed accessible seating will be placed both under the pavilion and just outside on the concrete pad. See images below for accessible seating options. Currently we are looking at offering two fixed picnic tables under the pavilion roof with the potential for fold up bench seating in mid-span. To the north of the pavilion, we are looking to add two uncovered square tables with fixed seating on the concrete pad.



Below is a section and floor plan of the fixed picnic tables below the new pavilion roof.



## Financial Implications

The renovations to the washrooms/site are being funded from PO0034 and the pavilion replacement is being funded from PO0025.

## Consultations

Stakeholders are as identified in the project charter. Any recommendations from the Accessibility Advisory Committee will be taken into consideration before the project is tendered.

## Attachments

Attachment-Silvercreek Washroom Renovations power point presentation

## Departmental Approval

Ian Scott, Manager, Facility Design & Construction, Facilities and Energy Management,

## Report Author

Jean Starchuk, Project Manager, Facilities & Energy Management