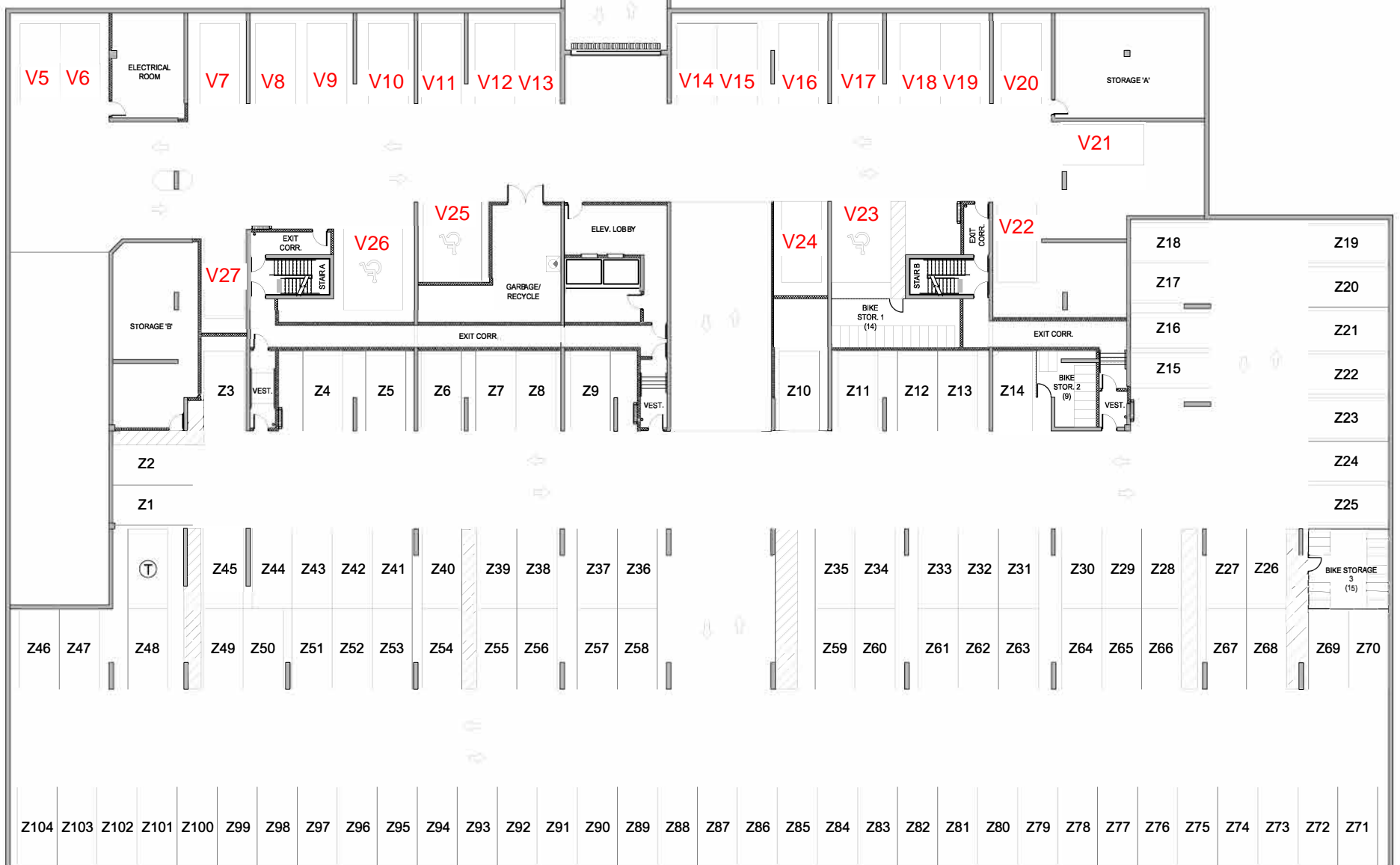


UNDERGROUND FLOOR PLAN - LEVEL 2

LEVEL 1 NOTE:
 NEW PARKING SPACES:
 V VISITOR PARKING
 5 SPACES
 C COMMERCIAL PARKING:
 18 SPACES

visitor stalls = 27
 standard stalls
 (tandems counted as 1 stall)
 = 228



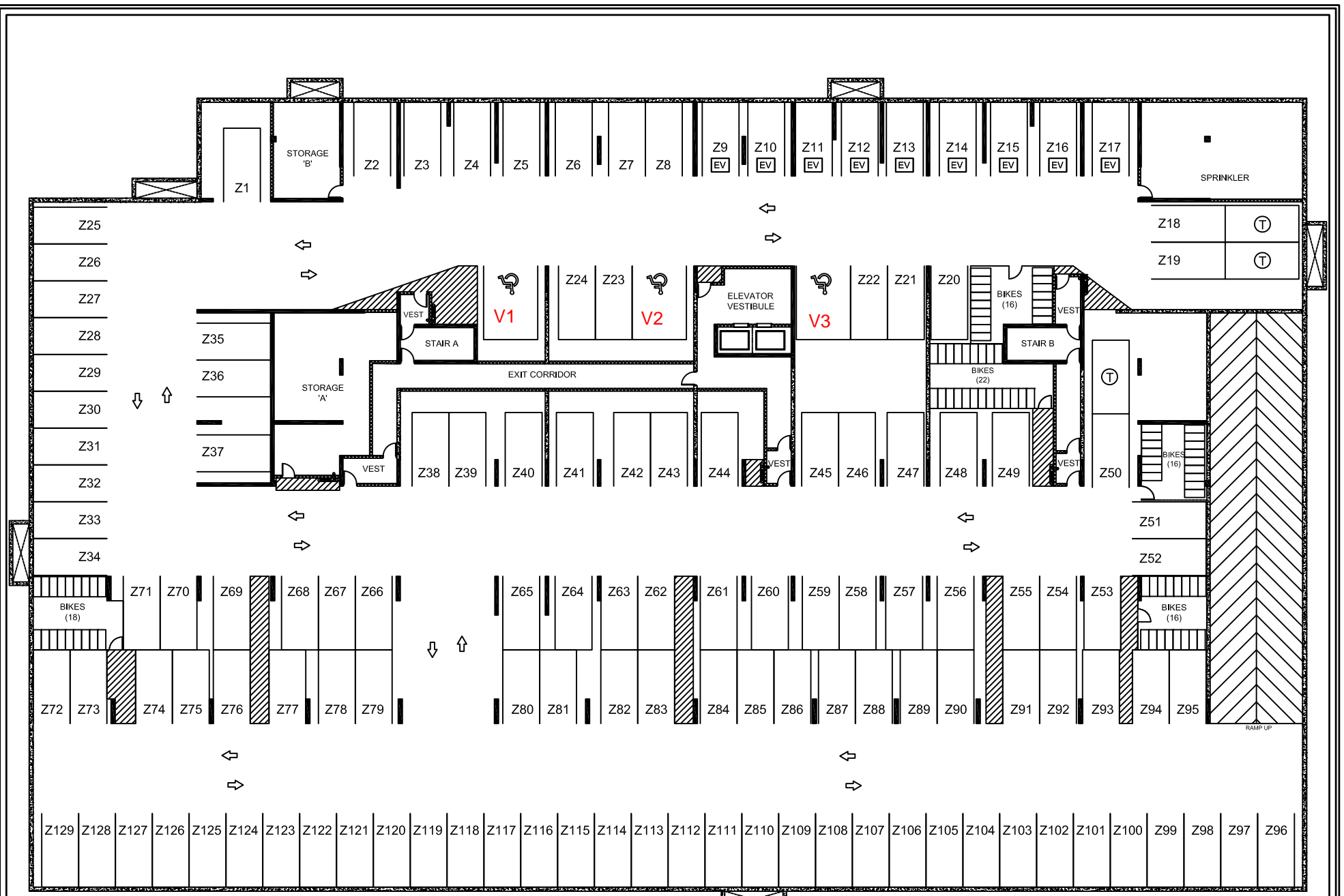
UNDERGROUND FLOOR PLAN - LEVEL 1

| DATE: | REV. NO. | NOTES |
|------------|----------|-------|
| 2020 11 18 | 1 | |
| 2018 11 06 | 0 | |

ALL FLOOR PLANS ARE APPROXIMATE DIMENSIONS AND SUBJECT TO CHANGE.
 ACTUAL USABLE FLOOR SPACE MAY VARY FROM STATED FLOOR AREAS.
 E. & O.E. © THE TRICAR GROUP.

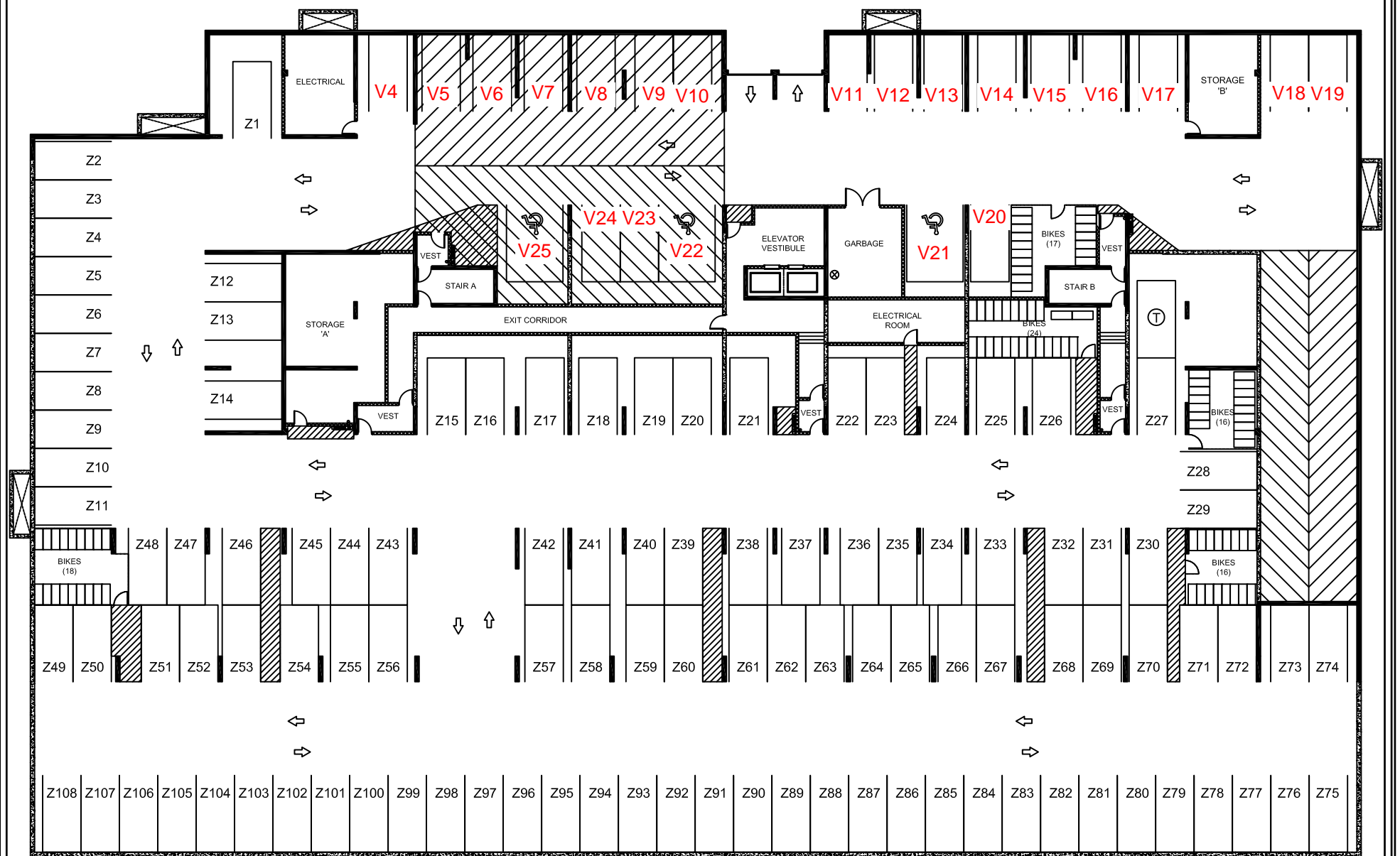
**LOWER LEVEL 1 & 2
 PARKING PLANS**
 1886 GORDON ST. GUELPH, ONTARIO





LOWER LEVEL 2

visitor stalls = 25 standard stalls = 237



LOWER LEVEL 1

| DATE: | REV. NO. | NOTES |
|--|----------|-------|
| 2020 09 17 | 0 | |
| <small>ALL FLOOR PLANS ARE APPROXIMATE DIMENSIONS AND SUBJECT TO CHANGE. ACTUAL USABLE FLOOR SPACE MAY VARY FROM STATED FLOOR AREAS. E. & O.E. © THE TRICAR GROUP.</small> | | |

PARKING PLANS
LL2 & LL1
1880 GORDON ST. GUELPH, ONTARIO
TOWER #2

TRICAR
THE HEIGHT OF LIVING



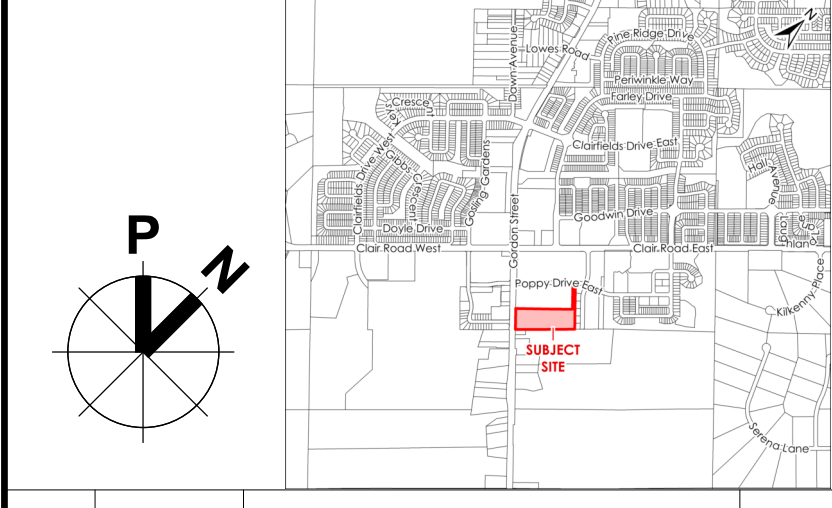
APPROVED FOR DEVELOPMENT
Subject to revisions and conditions indicated hereon
in accordance with Section 41 of the Planning Act,
R.S.O. 1990 c. P.13 as amended

KW
General Manager, Planning & Building Services

May 31, 2021
Date

| BICYCLE PARKING - RES 3 | |
|--------------------------------------|-------|
| Level | Count |
| A-GORDON-Res3-180271-V17 | |
| PARKING LEVEL 1 (R3) | 132 |
| PARKING LEVEL 2 (R3) | 129 |
| Total Bicycle Parking in Masterplan: | 261 |

| PARKING SCHEDULE - RES 3_Updated | |
|----------------------------------|-------|
| Family | Count |
| A-GORDON-Res3-180271-V17 | |
| PARKING LEVEL 1 (R3) | |
| Commercial | |
| M_Parking Space | 10 |
| | 10 |
| Regular | |
| M_Parking Space | 61 |
| M_Parking Space_tandem | 6 |
| | 67 |
| Visitor | |
| M_Parking Space | 54 |
| M_Parking Space_HC | 3 |
| | 57 |
| PARKING LEVEL 1 (R3) | 134 |
| PARKING LEVEL 2 (R3) | |
| Regular | |
| M_Parking Space | 126 |
| M_Parking Space_HC | 5 |
| M_Parking Space_tandem | 6 |
| | 137 |
| PARKING LEVEL 2 (R3) | 137 |
| Total Parking in Res 3: | 271 |



| REV | YYYY-MM-DD | REVISION / DRAWING ISSUE | REVIEW |
|-----|------------|------------------------------|--------|
| 10 | 2021-05-07 | ISSUED FOR SPA RESUBMISSION | |
| 9 | 2021-02-05 | ISSUED FOR SPA RESUBMISSION | |
| 8 | 2020-11-13 | ISSUED FOR SPA RESUBMISSION | |
| 7 | 2020-08-21 | ISSUED FOR SPA RESUBMISSION | |
| 6 | 2020-06-09 | ISSUED FOR SPA RESUBMISSION | |
| 5 | 2018-12-19 | ISSUED FOR SPA RESUBMISSION | |
| 4 | 2018-09-19 | ISSUED FOR SPA RE-SUBMISSION | |
| 3 | 2018-08-07 | ISSUED FOR SPA RESUBMISSION | |
| 2 | 2018-06-15 | ISSUED FOR SPA RESUBMISSION | |
| 1 | 2018-04-16 | ISSUED FOR SPA RESUBMISSION | |

CONSULTANT

PERMIT STAMP

SEAL



THIS DRAWING, AS AN INSTRUMENT OF SERVICE, IS THE PROPERTY OF KASIAN ARCHITECTURE ONTARIO INCORPORATED. THE COPYRIGHT IN THE SAME BEING RESERVED TO THEM. NO REPRODUCTION IS ALLOWED WITHOUT THE PERMISSION OF KASIAN ARCHITECTURE ONTARIO INCORPORATED AND WHEN MADE MUST BEAR ITS NAME.

THIS DRAWING IS NOT TO BE SCALED. THE CONTRACTOR IS TO VERIFY DIMENSIONS AND DATA NOTED HEREIN WITH THE CONDITIONS ON SITE AND IS RESPONSIBLE FOR REPORTING ANY DISCREPANCY TO KASIAN ARCHITECTURE ONTARIO INCORPORATED FOR ADJUSTMENT.

PROJECT

SP20-015- 1888 Gordon Street
Guelph, Ontario

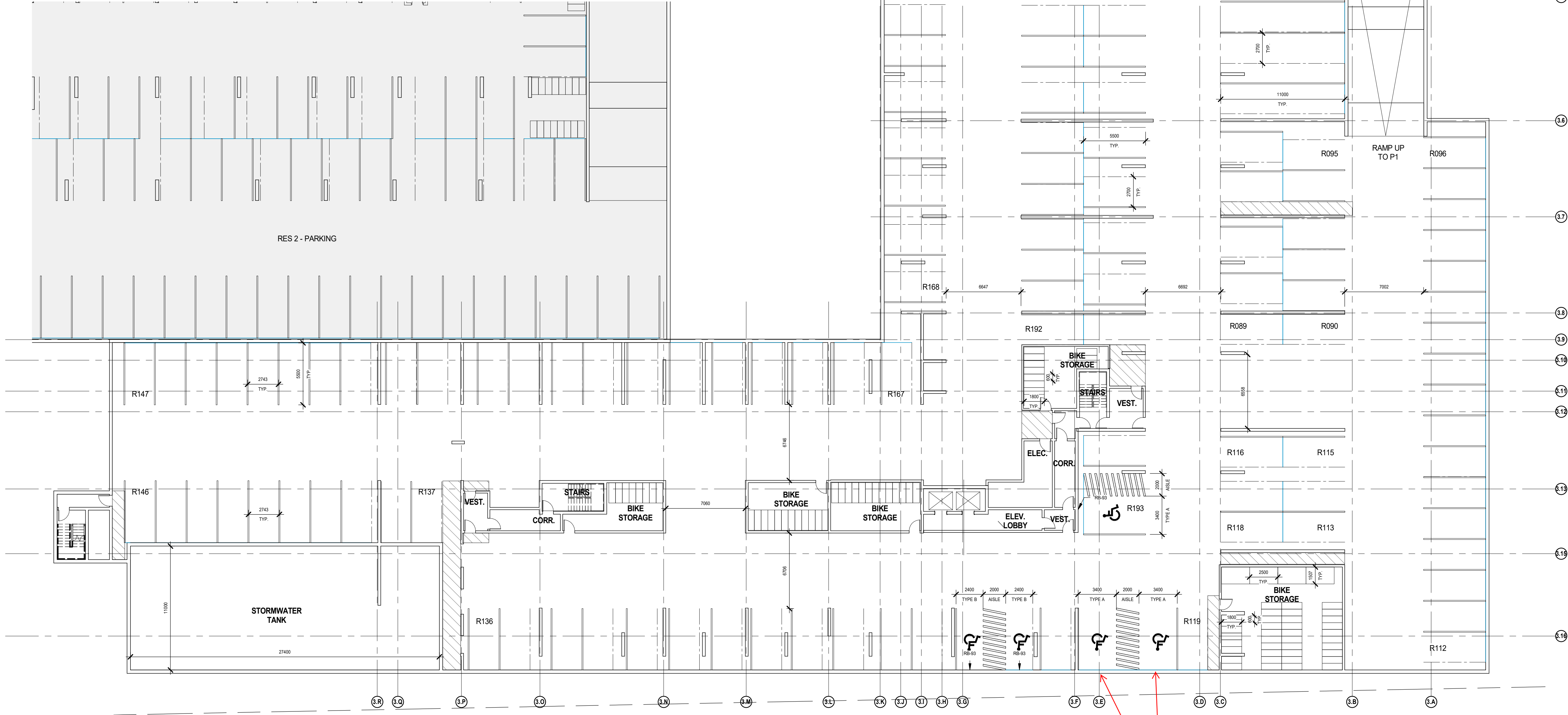
DRAWING TITLE

RES 3 - LOWER PARKING P2 LEVEL PLAN

DRAWING ISSUE

ISSUED FOR SPA RESUBMISSION

| PROJECT NO. | PLOT DATE | DRAWN | AUTHOR |
|-------------|------------|----------|---------|
| 180271 | 2021-05-07 | | |
| DRAWING NO. | SCALE | REVIEWED | CHECKER |
| EP-09 | 1 : 200 | | |
| | | | 10 |



APPROVED AS AMENDED IN RED



APPROVED FOR DEVELOPMENT
Subject to revisions and conditions indicated hereon
in accordance with Section 41 of the Planning Act,
R.S.O. 1990 c. P.13 as amended

KW May 31, 2021
General Manager, Planning & Building Services Date

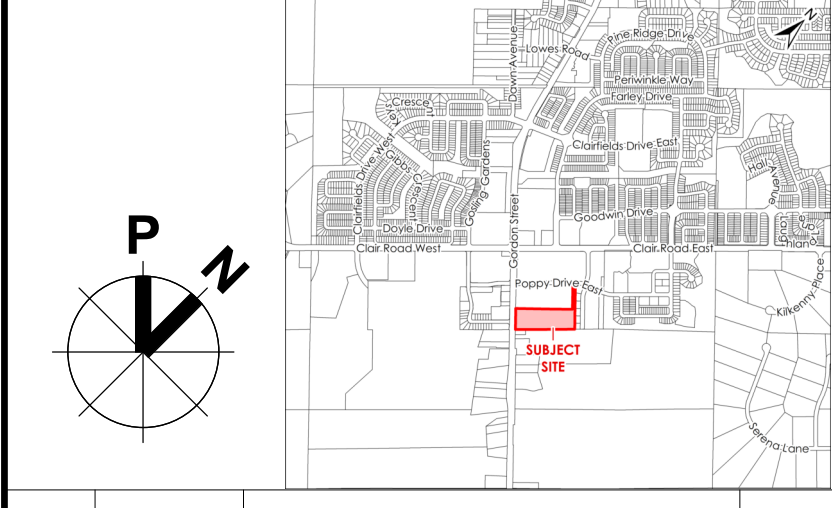
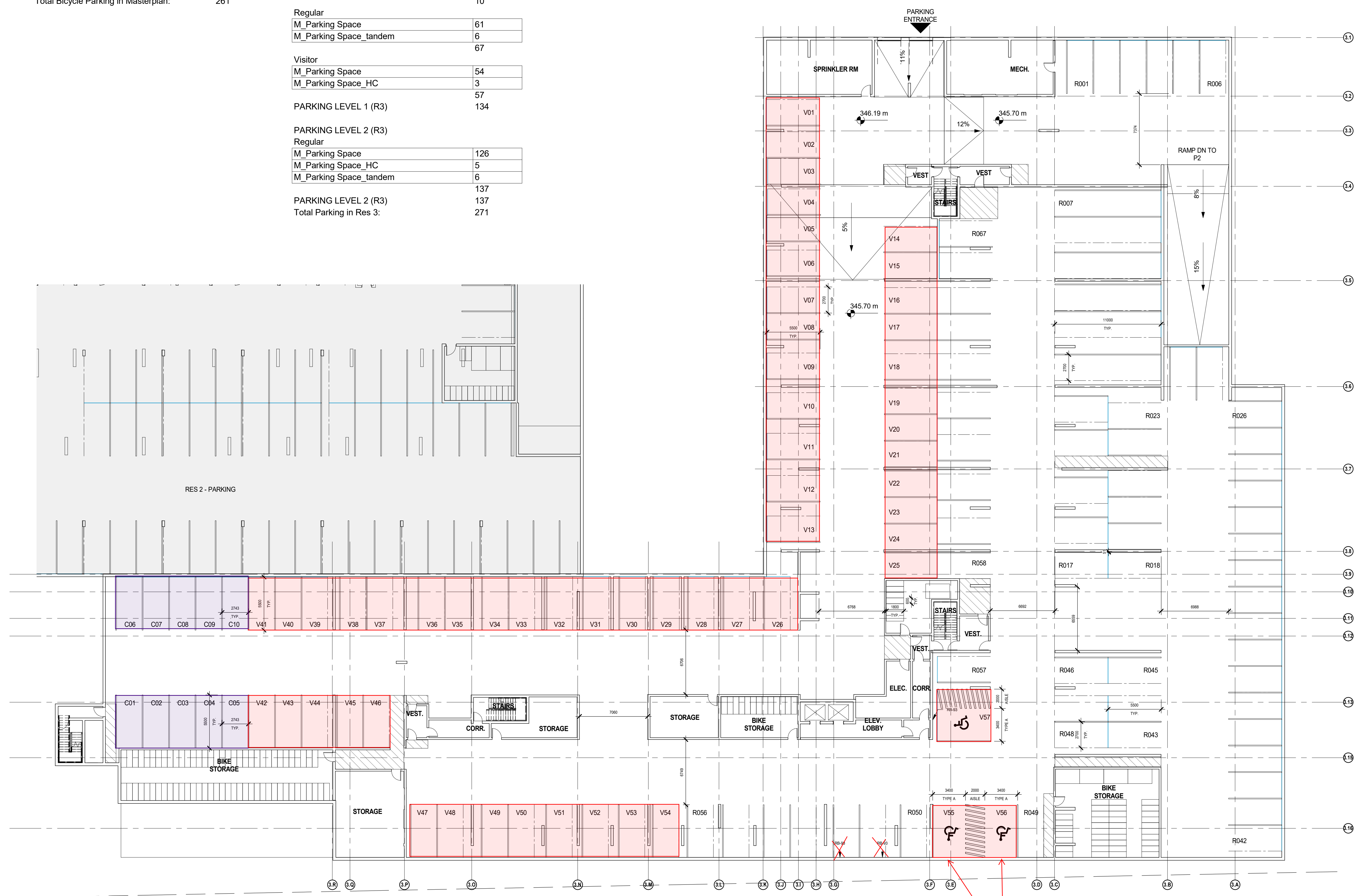
Kasian Architecture 85 Hanna Avenue, Suite 300
Ontario Incorporated Toronto, ON Canada M8K 3S3
T 416 583 3800 F 416 583 3810
www.kasian.com

| BICYCLE PARKING - RES 3 | |
|-------------------------|-------|
| Level | Count |

| | |
|--------------------------------------|-----|
| A-GORDON-Res3-180271-V17 | |
| PARKING LEVEL 1 (R3) | 132 |
| PARKING LEVEL 2 (R3) | 129 |
| | 261 |
| Total Bicycle Parking in Masterplan: | 261 |

| PARKING SCHEDULE - RES 3_Updated | |
|----------------------------------|-------|
| Family | Count |

| | |
|--------------------------|-----|
| A-GORDON-Res3-180271-V17 | |
| PARKING LEVEL 1 (R3) | |
| Commercial | |
| M_Parking Space | 10 |
| | 10 |
| Regular | |
| M_Parking Space | 61 |
| M_Parking Space_tandem | 6 |
| | 67 |
| Visitor | |
| M_Parking Space | 54 |
| M_Parking Space_HC | 3 |
| | 57 |
| PARKING LEVEL 1 (R3) | 134 |
| PARKING LEVEL 2 (R3) | |
| Regular | |
| M_Parking Space | 126 |
| M_Parking Space_HC | 5 |
| M_Parking Space_tandem | 6 |
| | 137 |
| PARKING LEVEL 2 (R3) | 137 |
| Total Parking in Res 3: | 271 |



| | | | |
|-----|------------|-----------------------------|--------|
| 10 | 2021-05-07 | ISSUED FOR SPA RESUBMISSION | |
| 9 | 2021-02-05 | ISSUED FOR SPA RESUBMISSION | |
| 8 | 2020-11-13 | ISSUED FOR SPA RESUBMISSION | |
| 7 | 2020-08-21 | ISSUED FOR SPA RESUBMISSION | |
| 6 | 2020-06-09 | ISSUED FOR SPA RESUBMISSION | |
| 5 | 2018-12-19 | ISSUED FOR SPA RESUBMISSION | |
| 4 | 2018-09-19 | ISSUED FOR SPA RESUBMISSION | |
| 3 | 2018-08-07 | ISSUED FOR SPA RESUBMISSION | |
| 2 | 2018-06-15 | ISSUED FOR SPA RESUBMISSION | |
| 1 | 2018-04-16 | ISSUED FOR SPA RESUBMISSION | |
| REV | YYYY-MM-DD | REVISION / DRAWING ISSUE | REVIEW |

CONSULTANT

PERMIT STAMP



THIS DRAWING, AS AN INSTRUMENT OF SERVICE, IS THE PROPERTY OF KASIAN ARCHITECTURE ONTARIO INCORPORATED. THE COPYRIGHT IN THE SAME BEING RESERVED TO THEM. NO REPRODUCTION IS ALLOWED WITHOUT THE PERMISSION OF KASIAN ARCHITECTURE ONTARIO INCORPORATED AND WHEN MADE MUST BEAR ITS NAME.

THIS DRAWING IS NOT TO BE SCALED. THE CONTRACTOR IS TO VERIFY DIMENSIONS AND DATA NOTED HEREIN WITH THE CONDITIONS ON SITE AND IS RESPONSIBLE FOR REPORTING ANY DISCREPANCY TO KASIAN ARCHITECTURE ONTARIO INCORPORATED FOR ADJUSTMENT.

PROJECT

SP20-015- 1888 Gordon Street
Guelph, Ontario

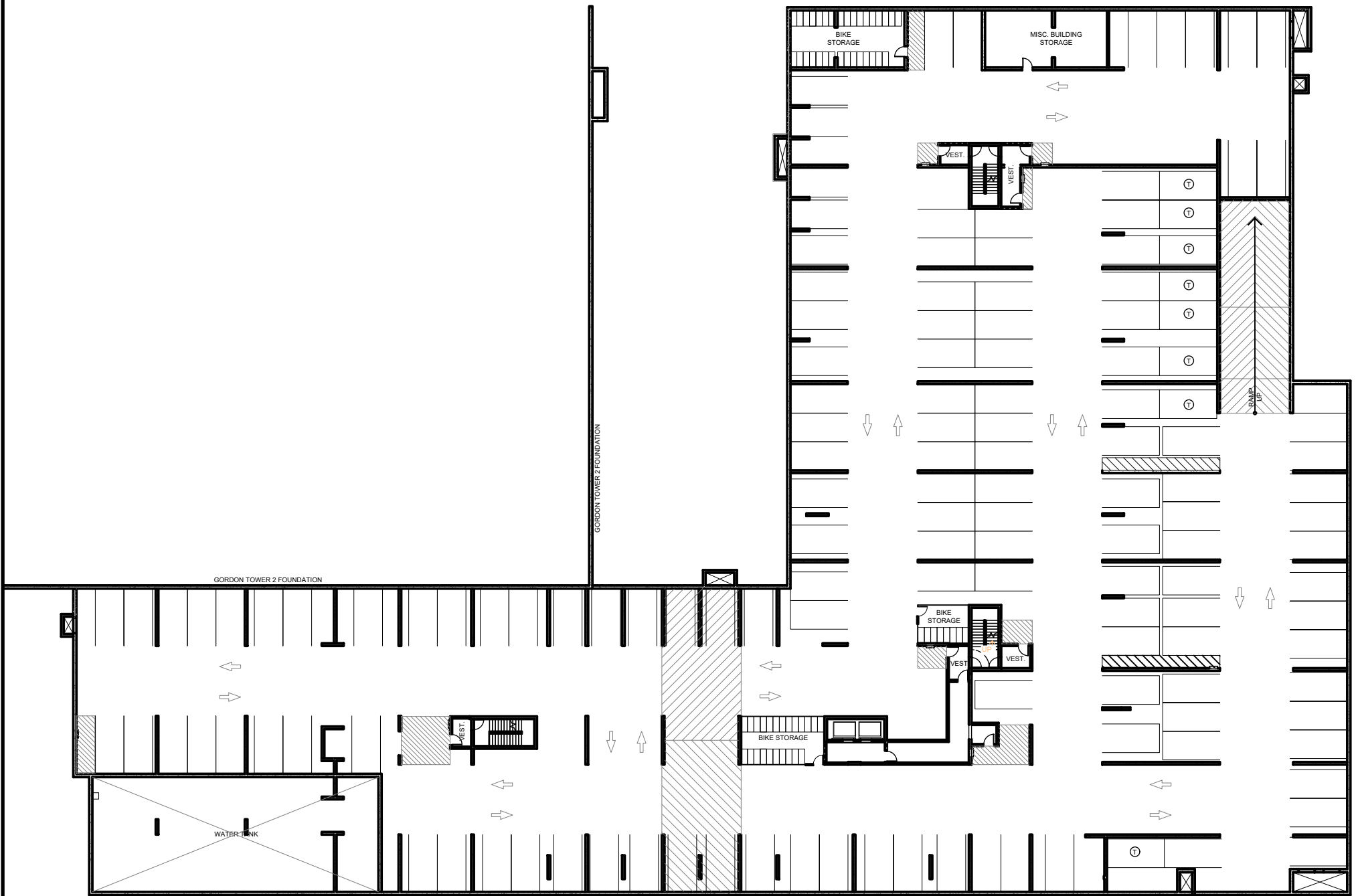
DRAWING TITLE

RES 3 - LOWER PARKING P1
LEVEL PLAN

DRAWING ISSUE

ISSUED FOR SPA RESUBMISSION

| | | | | | |
|-------------|--------|-----------|------------|----------|----------|
| PROJECT NO. | 180271 | PLOT DATE | 2021-05-07 | DRAWN | Author |
| DRAWING NO. | EP-10 | SCALE | 1 : 200 | REVIEWED | Checker |
| | | | | | REVISION |
| | | | | | 10 |



P2 PLAN



visitor stalls = 20
 standard stalls = 240

P1 PLAN

| DATE: | REV. NO. | NOTES |
|------------|----------|-------------|
| 2023 06 02 | 01 | 8TH FLR REV |
| 2023 05 19 | 0 | |

ALL FLOOR PLANS ARE APPROXIMATE DIMENSIONS AND SUBJECT TO CHANGE.
 ACTUAL USABLE FLOOR SPACE MAY VARY FROM STATED FLOOR AREAS.
 E. & O.E. © THE TRICAR GROUP.

LL2 & LL1 PARKING PLANS

1882 GORDON ST. TOWER 3 GUELPH, ONTARIO

