

Attachment-2 Historical Images

Figure 1 - 108 Queen St in 1960 as Bedford House. (Guelph Public Library, C6-0-0-0-0-232)



Figure 2 - 108 Queen St in 1960 as Bedford House. (Guelph Public Library, C6-0-0-0-0-502)



Figure 3 - 108 Queen St in 1960 as Bedford House. (Guelph Public Library, C6-0-0-0-0-513)



Figure 4 - 108 Queen St in 1961 as Bedford House. (Guelph Public Library, C6-0-0-0-0-852)



Figure 5 - 108 Queen St in 1965. (Photo: Gordon Couling, Wellington County Archives)



Figure 6 - Map of the Town of Guelph, from Recent Surveys and Original Maps, 1855. Drawn by F. J. Chadwick. Detail shows Lot 9, located beside the Eramosa Road, just outside the town limits at that time. (Image created by Libby Percival. Map source: Archives of Ontario)

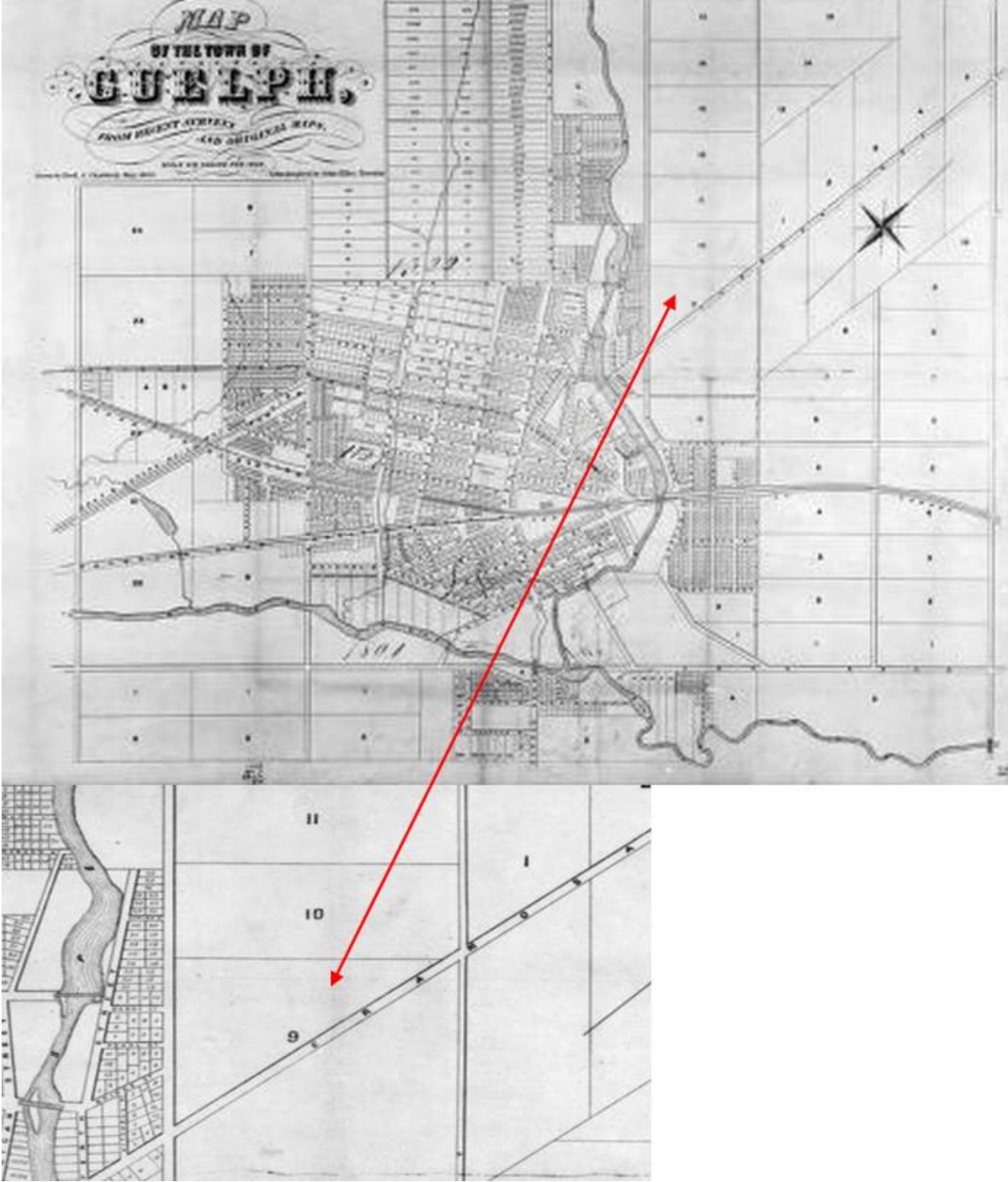


Figure 8 - Details from Thomas Cooper's Maps of the Town of Guelph (1862 and 1875) showing the buildings on John Mitchell's property. (Source: Guelph Civic Museum)

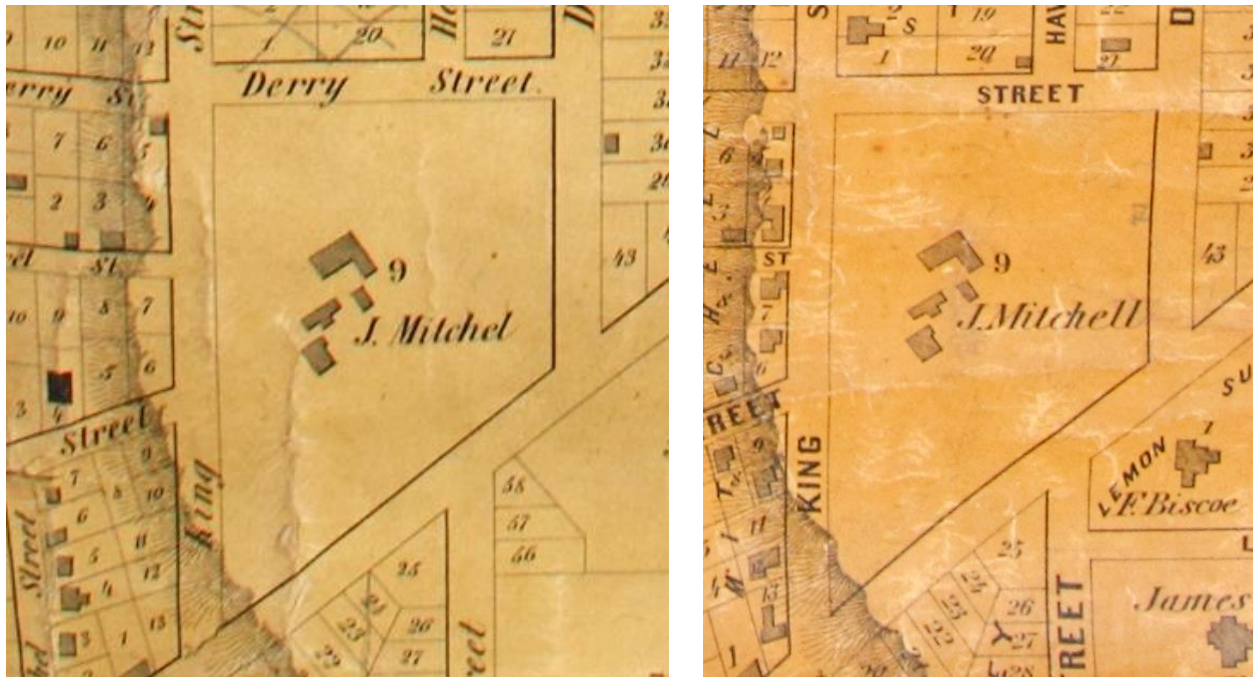


Figure 9 - Detail of panoramic view of Guelph circa 1872, drawn by H. Brosius. (Source: Guelph Civic Museum)

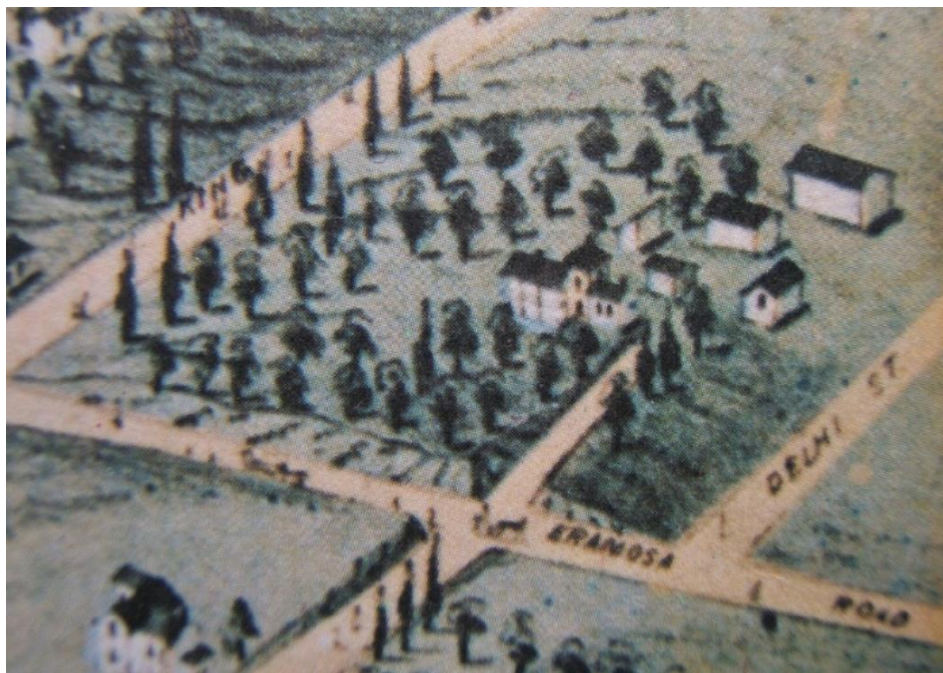


Figure 10 - Detail of Map of the Town of Guelph in 1877 by Alfred T. Cotterell, in the Illustrated Atlas of County of Wellington. (Source: Guelph Public Library)



Figure 11 - Detail of Map of the City of Guelph in the Province of Ontario, 1891 by the Late F. J. Chadwick (copy by W. Hill Tout, 1892). (Source: University of Guelph Library Archives)

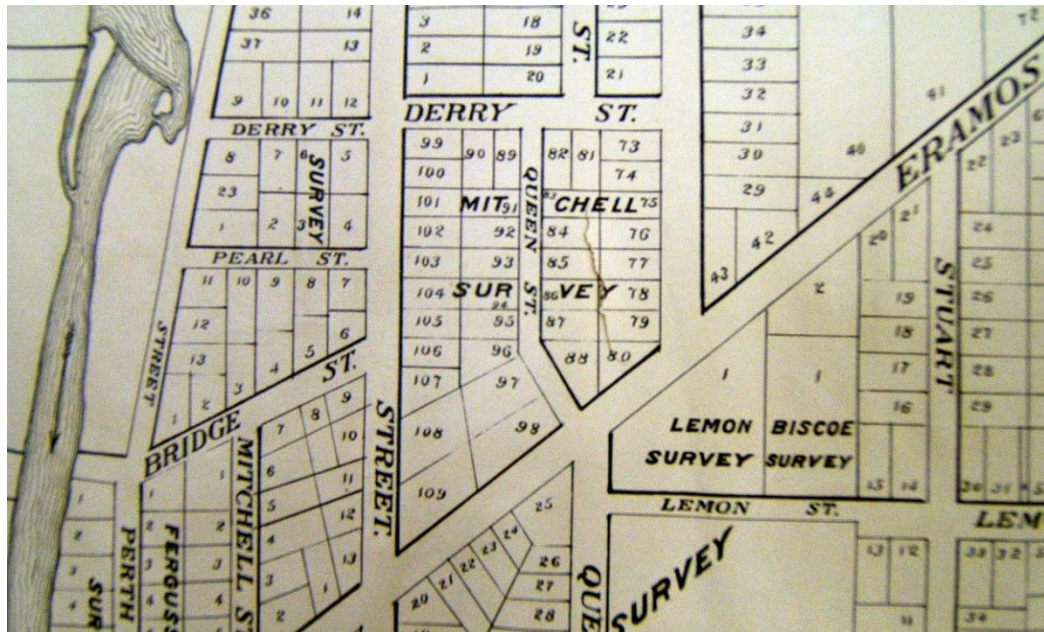


Figure 12 - Detail of Registered Plan 243, 1876. "Plan Shewing the Subdivision of Part of Lot Number 9 in the First Range of Division F, Formerly in the Township, Now in the Town of Guelph, Estate of the Late John Mitchell". (Source: City of Guelph)

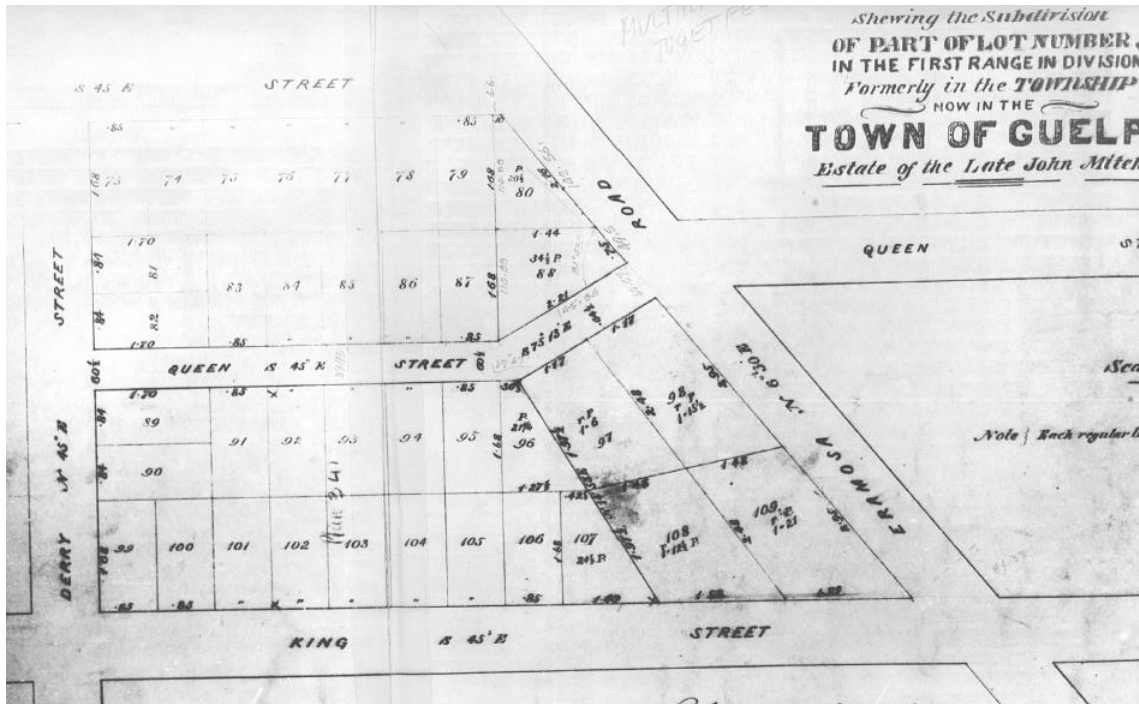


Figure 13 - Detail of Registered Plan 341, 1911. Plan of a Re-Subdivision of Lots 92, 93, 94, 95, 96, 102, 103, 104, 105, 106, & 107, of Registered Plan No. 243 in the City of Guelph. The building is located on Lots 3, 4 and 5. (Source: City of Guelph)

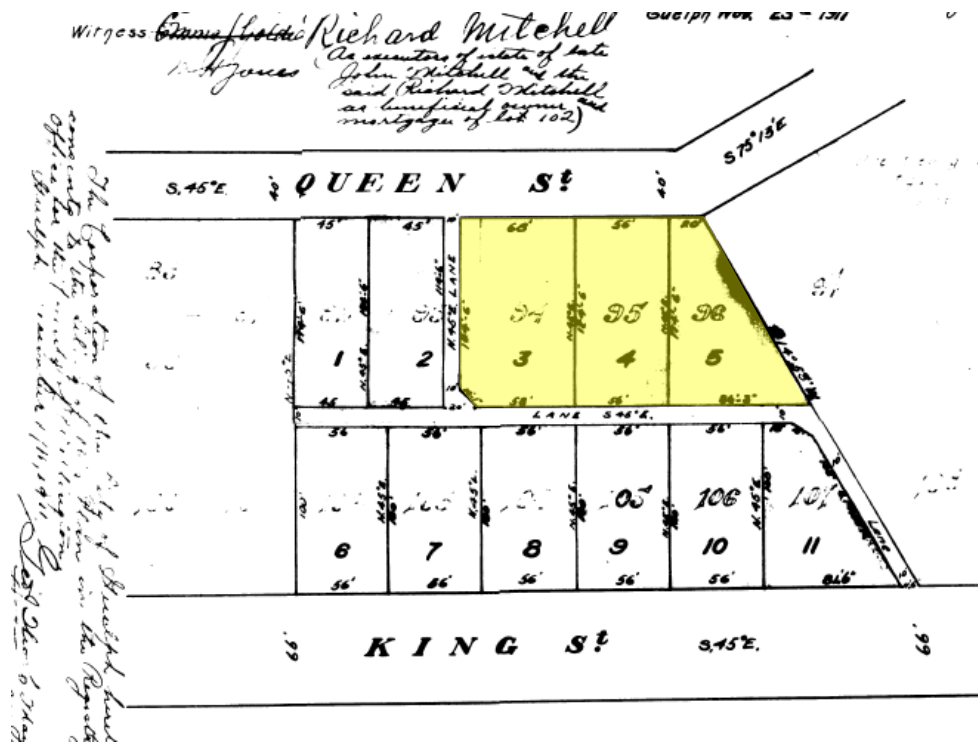


Figure 14 - Detail of Fire Insurance Plan of the Town of Guelph, February 1897 (revised November 1907 and 1911). Charles E. Goad. (Source: Guelph Civic Museum)

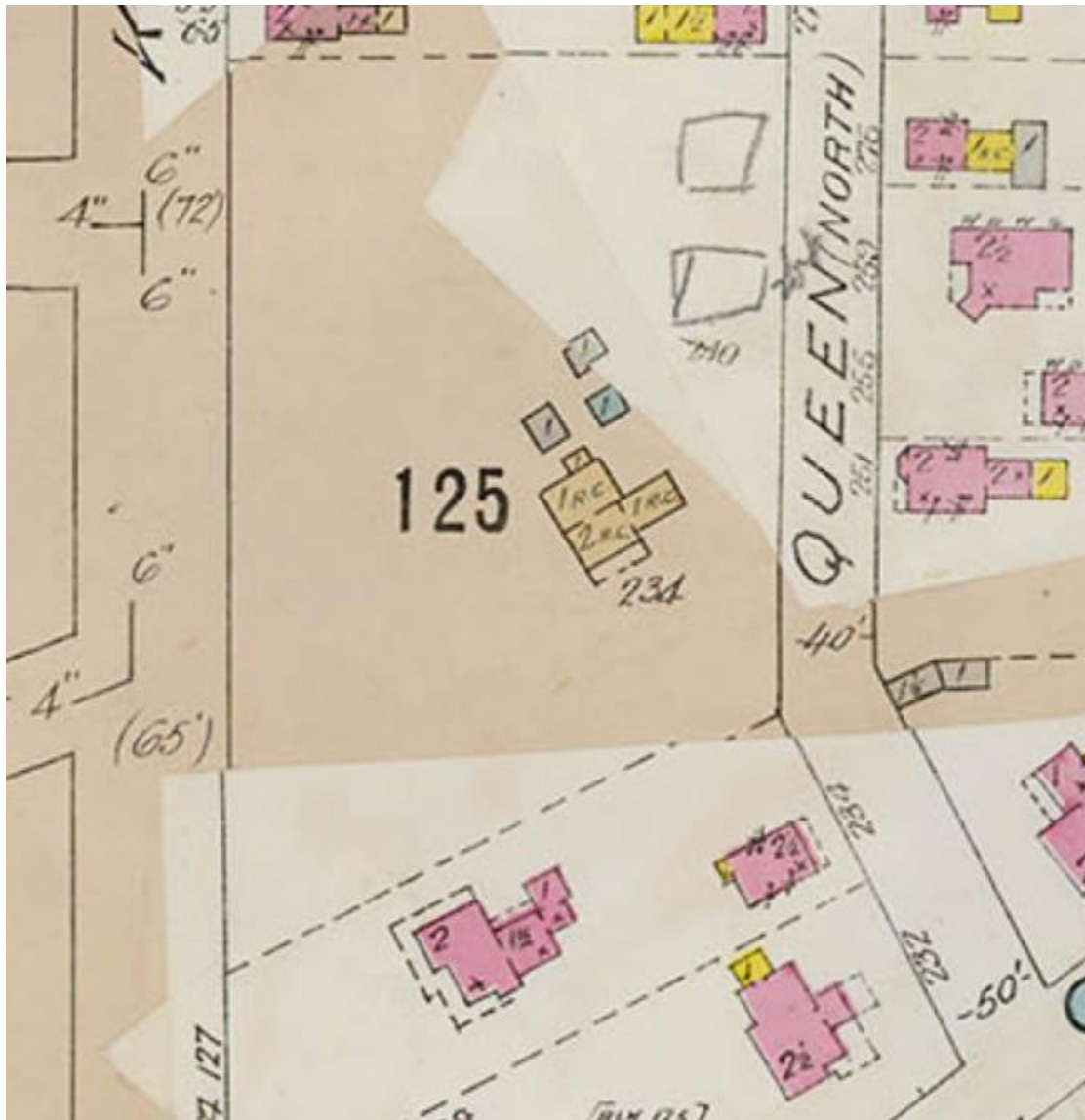


Figure 15 - Detail of Fire Insurance Plan of the City of Guelph, March 1922 (revised October 1929). Underwriter's Survey Bureau Limited. (Source: Guelph Civic Museum)

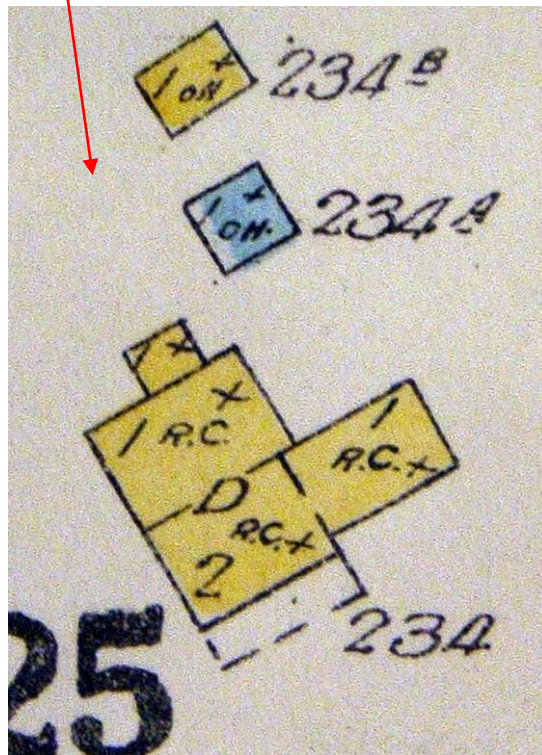
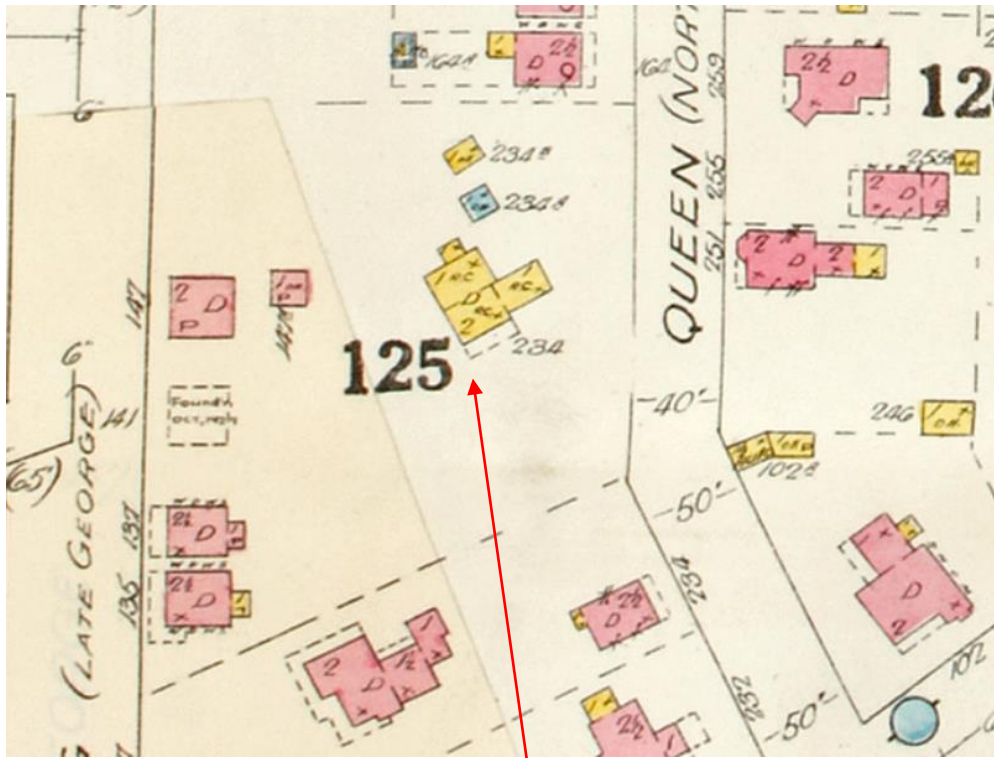


Figure 16 - Detail of Fire Insurance Plan of the City of Guelph, March 1922 (revised 1946). Underwriter's Survey Bureau Limited. (Source: Guelph Civic Museum)

