

Attachment-1 Property Location and Current Photos

Figure 1 - Subject property at 106 Carden Street. (City of Guelph GIS)



Figure 2 - 106 Carden Street with yellow dashed line showing portion of building having cultural heritage value. (City of Guelph GIS)

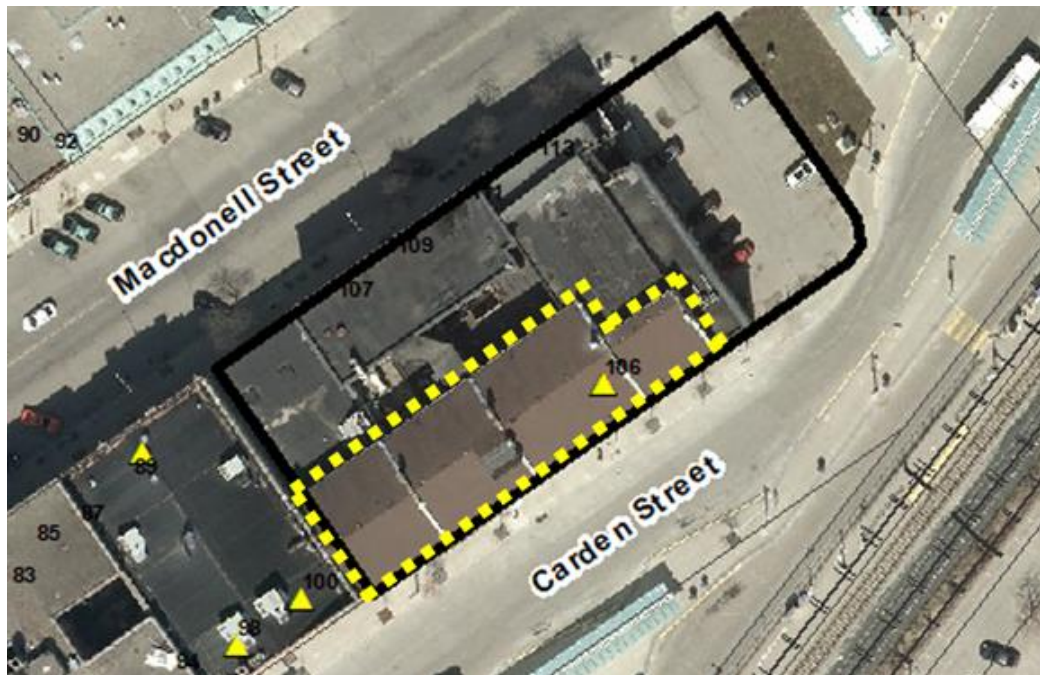


Figure 3 - 106 Carden Street from south. (Photo: S. Robinson, Heritage Planning)



Figure 4 - 106 Carden Street from east. (Photo: S. Robinson, Heritage Planning)



Figure 5 – Macdonell Street façade from north. (Photo: S. Robinson, Heritage Planning)



Figure 6 - View of Carden Street streetwall from railway track. (Photo: S. Robinson, Heritage Planning)



Figure 7 - Wooden lintel on main floor, possibly from the 1840's stable building. The opening is similar in size to the ones visible in the photographs from the 1880s. (Photo: S. Robinson, Heritage Planning)

