

### Attachment-3 Historic Images

Figure 1 – Plan 8 of the Town of Guelph, approximate location of 167 Suffolk Street West indicated in by a rectangle in red.



Figure 2 – Map of the Town of Guelph, Thomas W. Cooper (1862) with 167 Suffolk Street West indicated by a square in red.

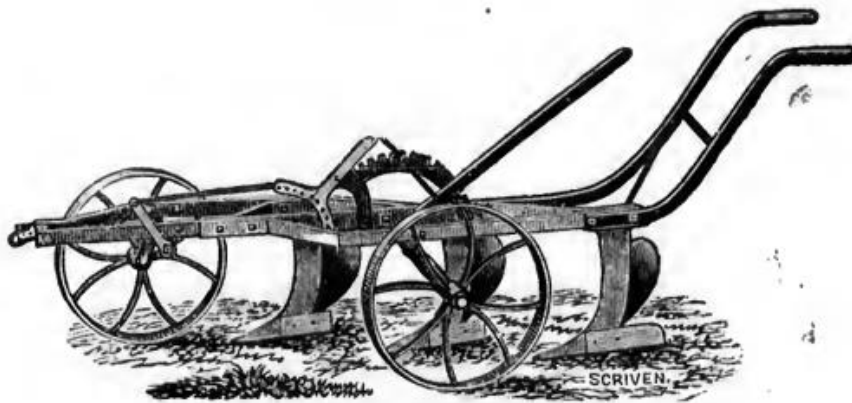


Figure 3 – Map of the Town of Guelph, T.W. Cooper (1877), the factory is show on Lots 12 and 13.



Figure 4 – Advertisement for Cossitt's Agricultural Implement Works from 1875 (The Annals of the Town of Guelph 1827-1877, pg. 166).

**COSSITT'S  
AGRICULTURAL IMPLEMENT WORKS  
GUELPH, ONT.**



Buy only the genuine FARMER'S FRIEND GANG PLOW, patented March 1875. Send for circular and terms.

**L. COSSITT,**

Manufacturer of Gang Plows, Fanning Mills, Horse Turnip Seed Drills, Horse and Hand Power Feed Cutters, Lawn Mowers, Horse Pokes, &c.



Figure 5 – Fire Insurance Plan from 1881 (revised 1892) showing 167 Suffolk Street West and the Gowdy Agricultural Works (Guelph Civic Museum)

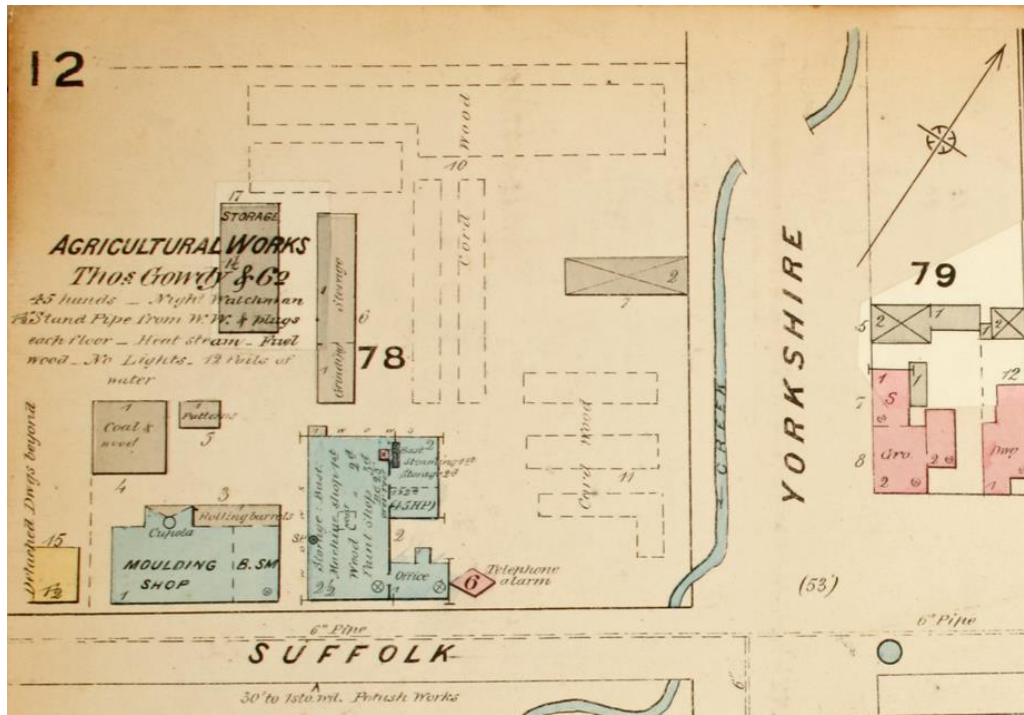


Figure 6 – Image of the Gowdy Agricultural Works on Suffolk Street (Guelph Civic Museum 2016.24.3)

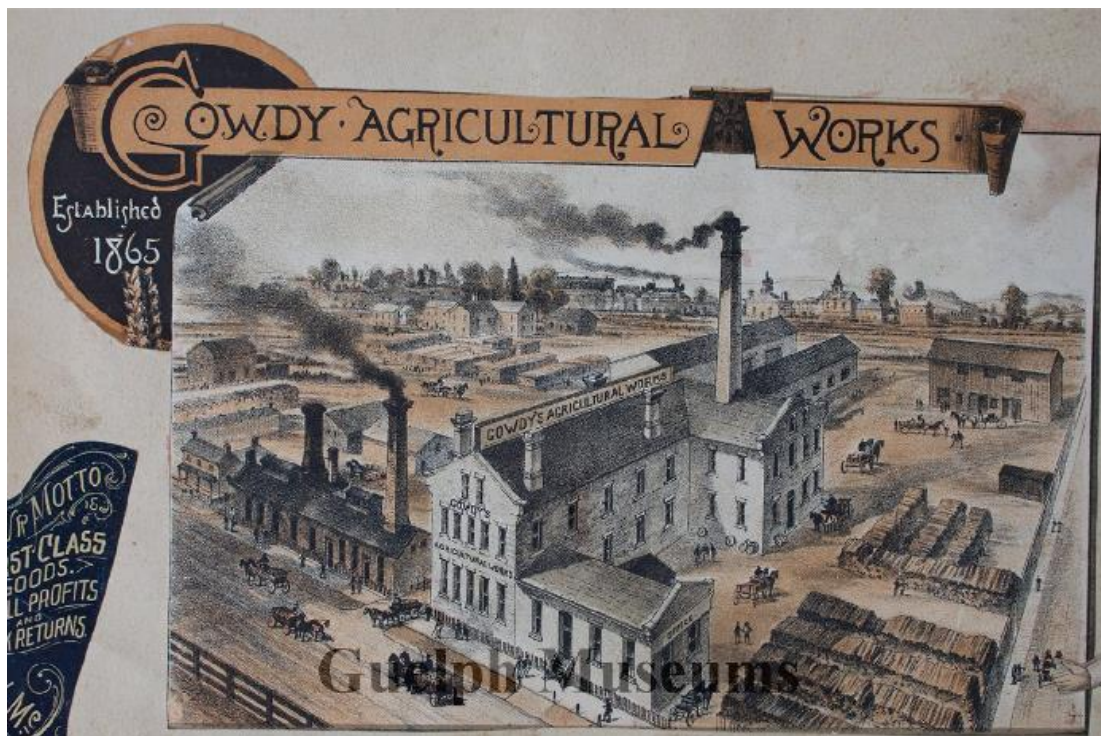


Figure 7 – Image of Thomas Gowdy, Mayor of Guelph from 1899-1890 (Guelph Public Library, F38-0-4-0-0-6 - Thomas Gowdy).

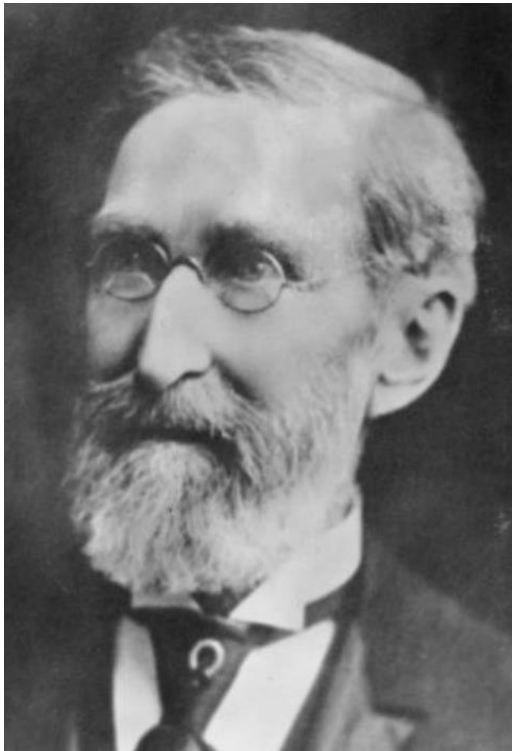


Figure 8 – Image of a piece of Gowdy Agricultural Works equipment (Industries of Canada, 1886, pg. 108)

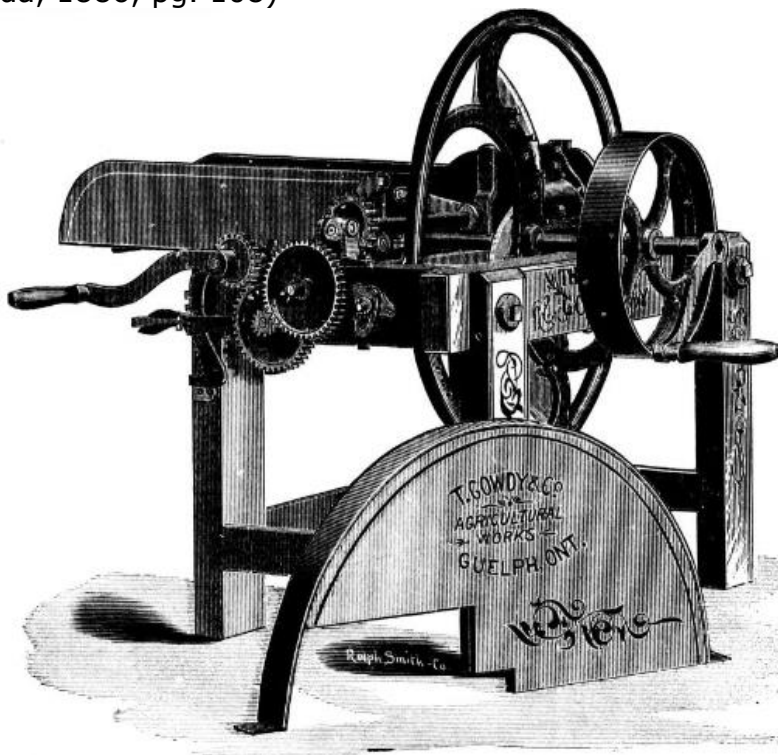


Figure 9 – Image of John G. Morlock, owner of Morlock Bros Company, who operated out of 167 Suffolk Street West in the early 20<sup>th</sup> century (Guelph Public Library 1974.15.7, pg. 47).

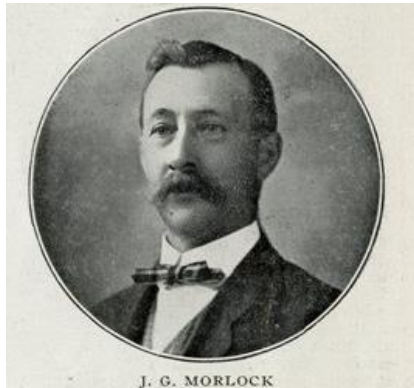


Figure 10 - Image of William Morlock, owner of Morlock Bros Company, who operated out of 167 Suffolk Street West in the early 20<sup>th</sup> century (Guelph Public Library 1974.15.7, pg. 47).



Figure 11 – Image of the Morlock Bros. factory at 167 Suffolk Street West, including its western addition, in 1908 (Wellington County Archives A1985.110)

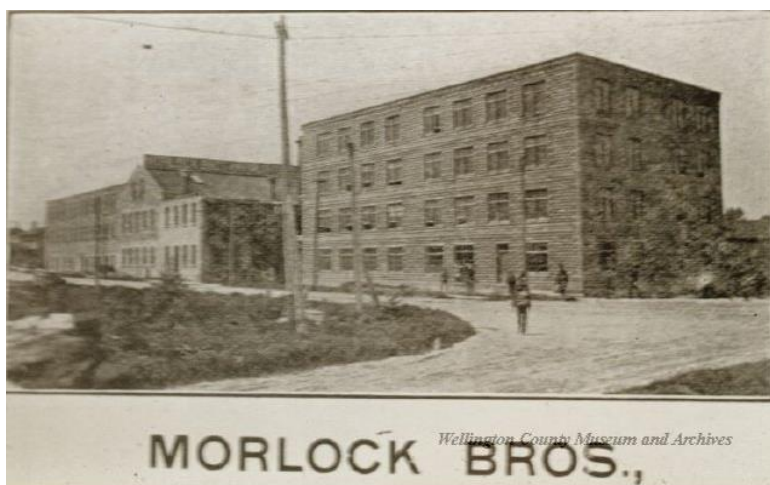




Figure 12 – Fire Insurance Plan showing 167 Suffolk Street West from 1922, revised 1946 (Opta Information Intelligence)

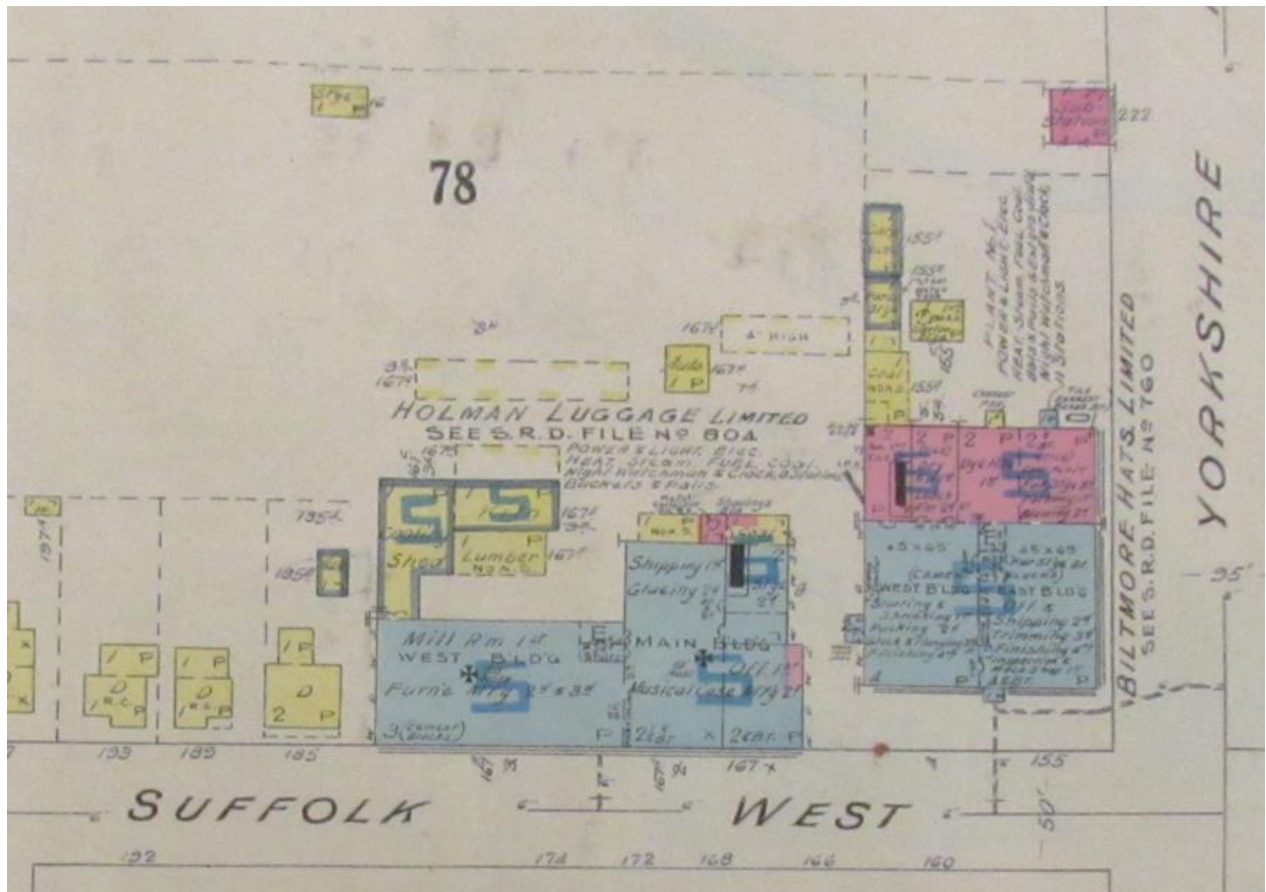


Figure 13 – Image of five rows of employees of Holman Luggage Ltd., 1951 (Guelph Civic Museum 1996.15.1)



Figure 14 – Image of 167 Suffolk Street from 1977. (Wellington County Archives A1985.110)

