

## Attachment 2: Historic Documents

Figure 1: McDonald's 1828 Plan for Guelph.

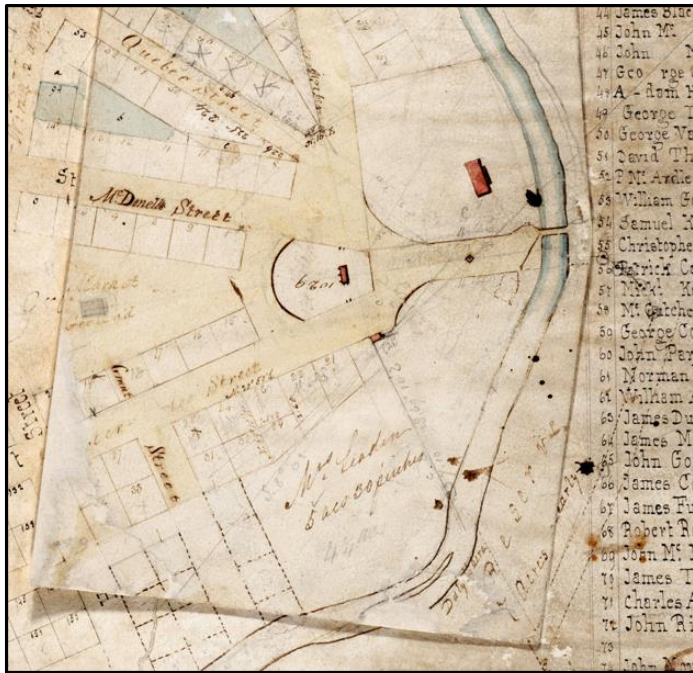


Figure 2: John Galt's 1827 Plan of the Town of Guelph.

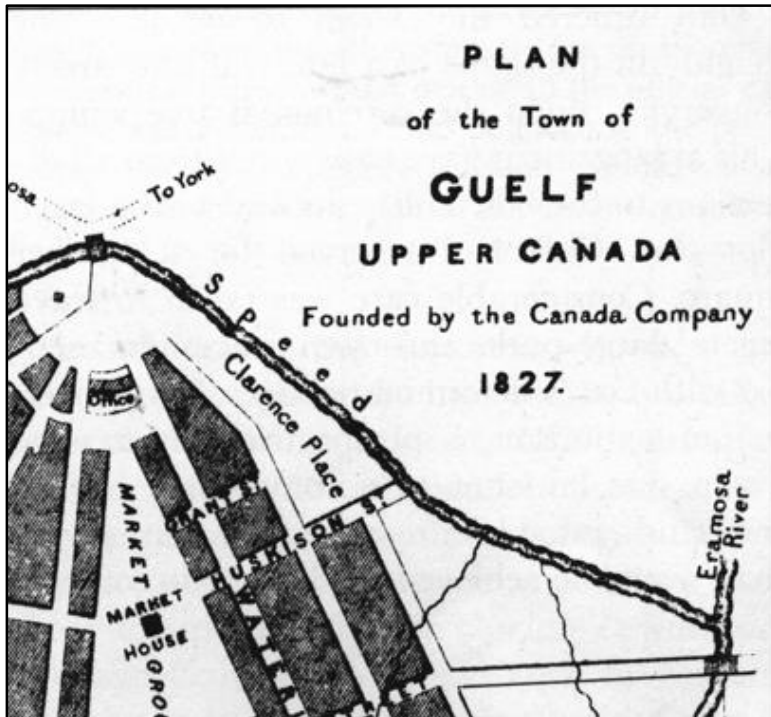


Figure 3: McDonald's 1847 map.

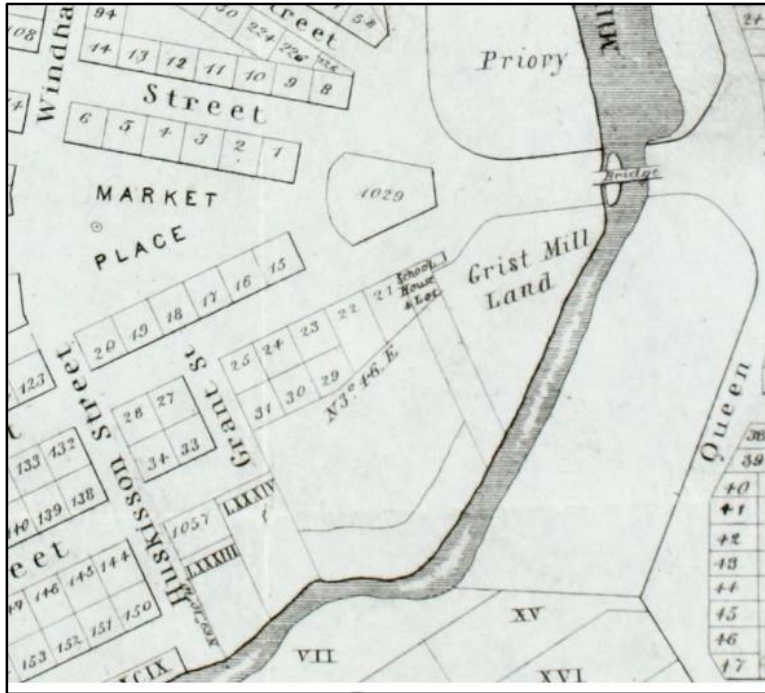


Figure 4: Plan 33 from Allan Neeve's survey, circa 1855.

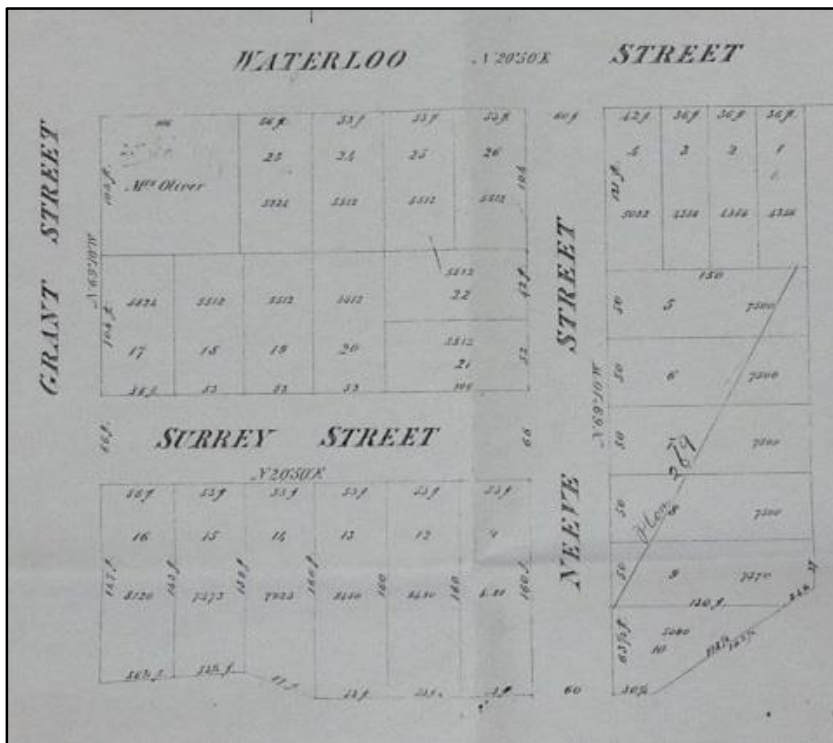


Figure 5: J. Smith map, 1855.



Figure 6: 1862 Plan of Guelph.

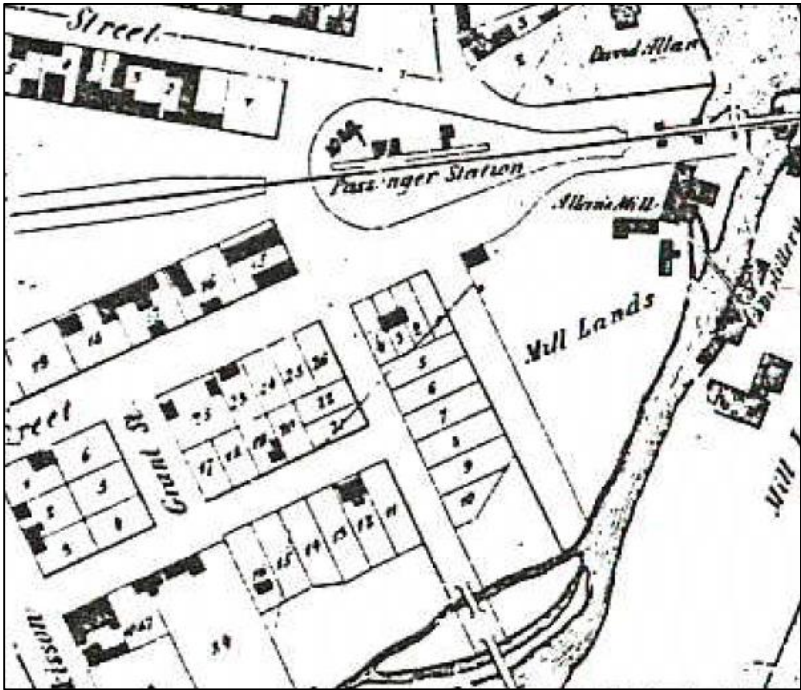


Figure 7: Cooper's Map, c. 1862



Figure 8: Brosius Bird's Eye, 1872

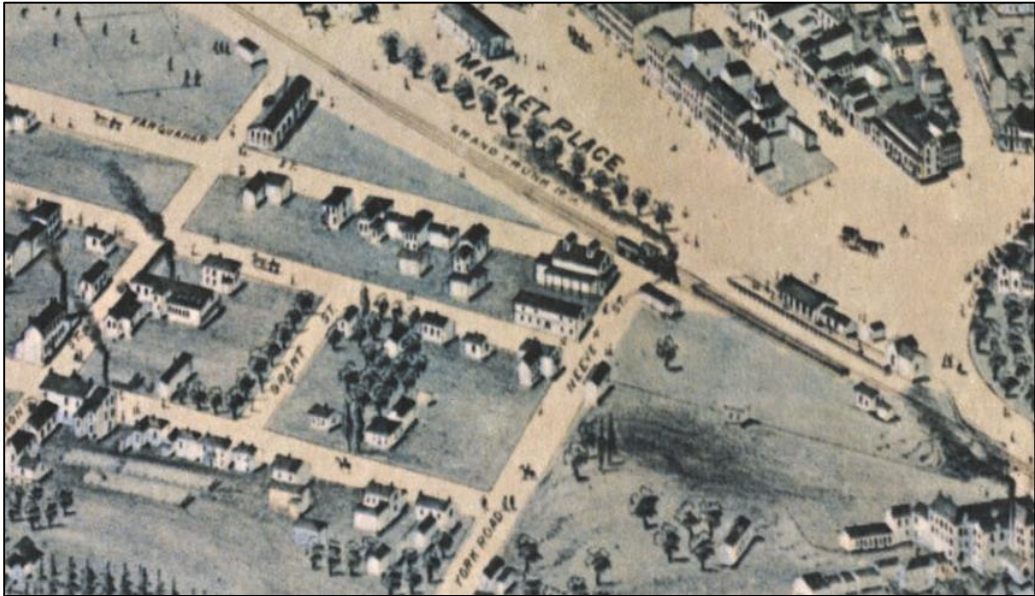


Figure 9: Cotterell's map, circa 1877.



Figure 10: Plan 269 of 14 Neeve Street, from Cooper's Survey circa 1877

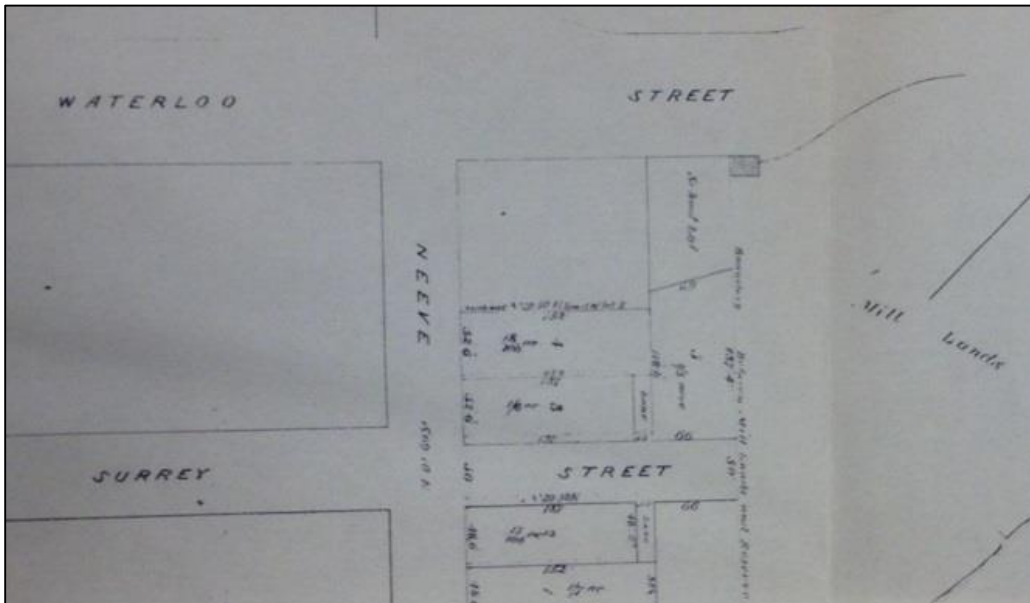


Figure 11: Fire Insurance Plan, 1878 (Revised 1878).



Figure 12: Fire Insurance Plan 1881 (Revised 1892), Sheet 3.

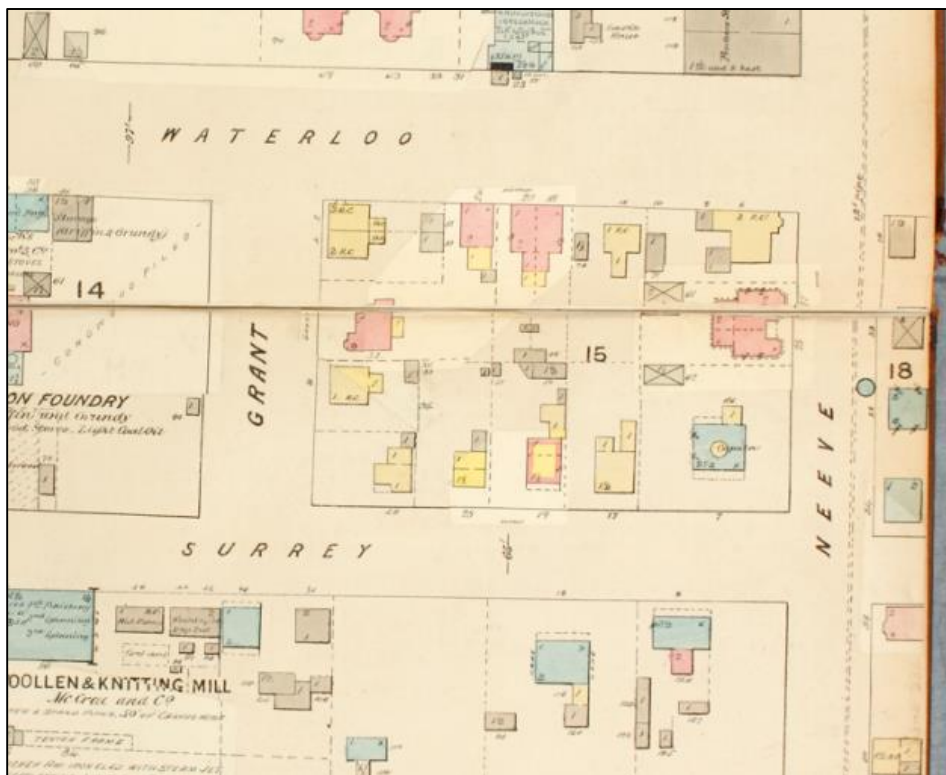


Figure 13: Fire Insurance Plan 1897 (revised 1911), Sheet 2A.

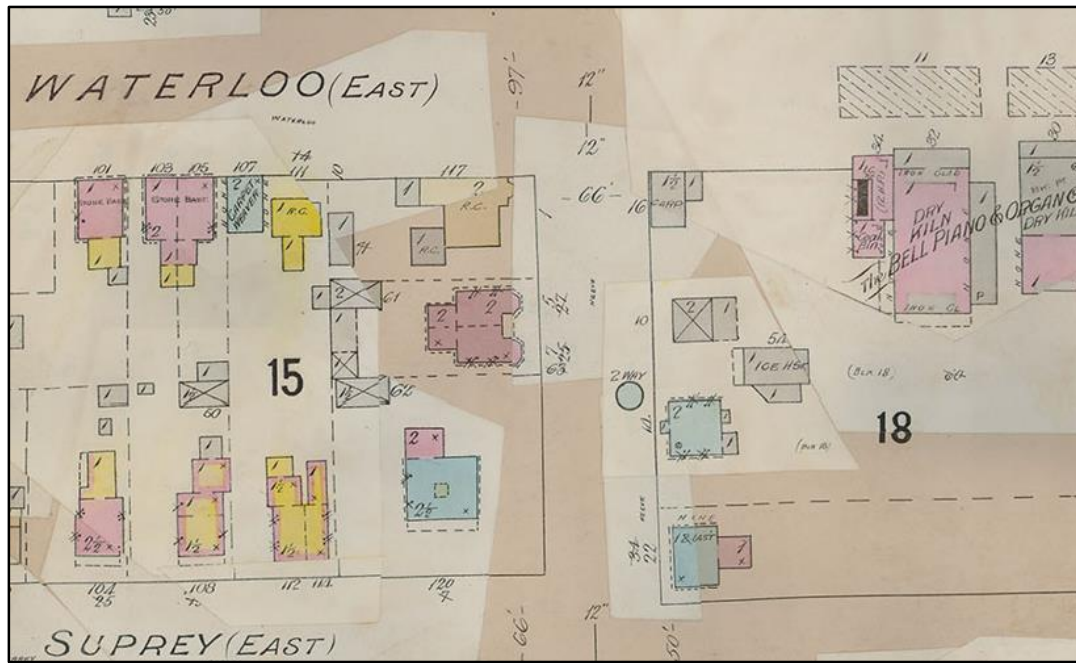


Figure 14: Fire Insurance Plan 1922 (Revised 1929), Sheet 20.

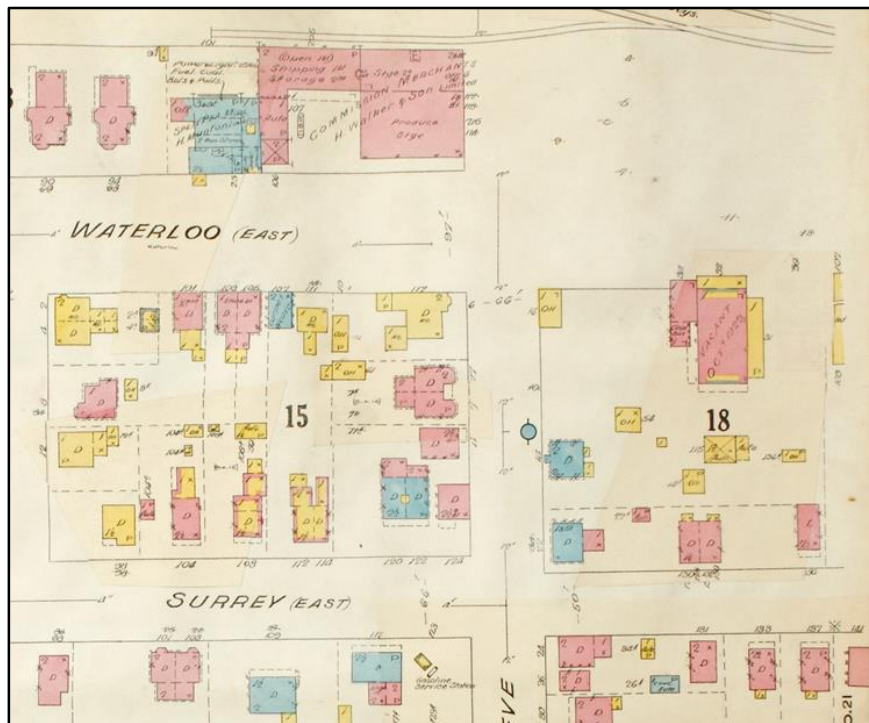


Figure 15: Fire Insurance Plan 1922 (Revised 1946), Sheet 20a.

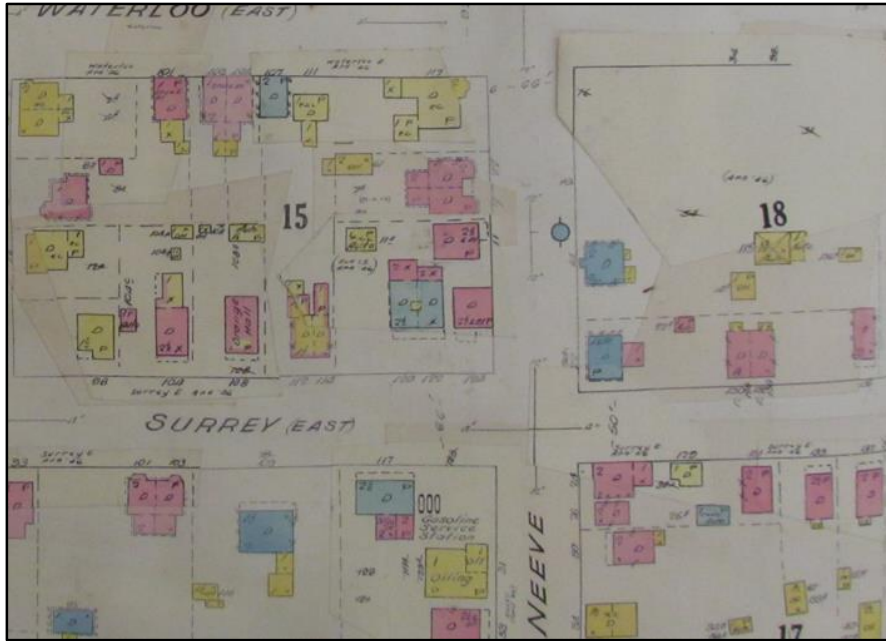


Figure 16: Fire Insurance Plan 1960, Sheet 20.

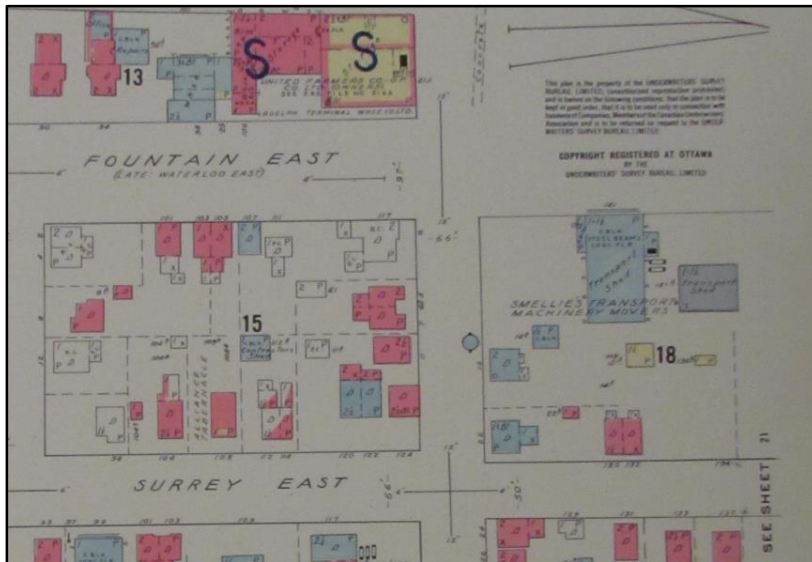




Figure 17: Scan of Gordon Couling's Inventory Page for 14 Neeve Street, circa 1975.

<u>ARCHITECTURAL INVENTORY</u>	BLOCK No.	PAGE
	ITEM.	
<u>LOCATION</u>	14 Neeve	
<u>ARCHITECT</u>		
<u>CONTRACTOR</u>		
<u>ORIGINAL OWNER</u>	Francis Law	
<u>ORIGINAL USE</u>	single family dwelling	
<u>DATE OF CONSTRUCTION</u>	1875-1880	
<u>BUILDING MATERIAL</u>	local limestone	
<u>SIGNIFICANCE</u>	Stone construction, age, character.	


  


PHOTO DATE: 2-1-75