

# Attachment 1 – Historical Documentation

**Legal description:** Book 10A, Lot A, Plan 302.

## Ownership History from Land Registers

Table 1 Land Title Abstracts

<b>No. Inst.</b>	<b>Instrument</b>	<b>Its Date</b>	<b>Date</b>	<b>Grantor</b>	<b>Grantee</b>	<b>Qty of Land</b>	<b>Value</b>
202	BoS	20 June 1900	24 June 1900	Christian Kloepfer (Widow)	Rev. McCarron	All	300
4528	BoS	12 Nov 1906	16 Nov 1906	Christian Kloepfer and Wife	John Moore	Part	40
4792	BoS	12 Nov 1906	15 May 1907	John Moore	Alfred Hales	Part	68
6234	BoS	8 Nov 1908	24 Nov 1908	Alfred Hales and Wife	Joseph J. Checkley	Part	105
6637	BoS	22 May 1909	22 May 1909	John Moore and Wife	William. R. Johnson	Part	60
6796	BoS	21 June 1909	19 July 1909	Joseph J. Checkley	Edward Hill and Elizabeth Hill	Part	100
7849	BoS	3 Aug 1910	13 Aug 1910	Edward Hill and Wife	Joseph J. Checkley	Part	100
8103	BoS	31 Dec 1910	3 Jan 1911	Joseph J. Chuckley	Annie Bowman	Part	150
10035	BoS	10 Aug 1912	19 Aug 1912	William R. Johnson	Edward J. Burcombe	Part	110
11529	BoS	9 April 1913	12 April 1913	Robert McCarron (Widow)	The Toronto Suburban Railway Company	Part	3572
11823	BoS	1 Dec 1913	9 Dec 1913	Edward Hill	[...] [...] [...] Company Limited	Part	650
11824	BoS	1 Dec 1913	9 Dec 1913	Annie Bowman	[...] [...] [...] Company Limited	Part	700

No. Inst.	Instrument	Its Date	Date	Grantor	Grantee	Qty of Land	Value
11938	BoS	12 Jan 1914	18 Jan 1914	Edward J. Burcombe	[...] [...] [...] Company Limited	Part	250
12108	BoS	18 May 1914	19 May 1918	John Moore and Wife	[...] [...] [...] Company Limited	Part	300
26175	Q. claim	20 June 1913	9 May 1925	Robert McCarron (Widow)	[...] [...] [...] Company Limited	Part	1.00
29663	Q. claim	28 Feb 1925	6 Mar 1925	[...] [...] [...] Company Limited	The Toronto Suburban Railway Company	Part	2.00
26693	Grant	1 June 1932	13 Sep 1932	The Toronto Suburban Railway Company	Canadian National Electric Railway	Part	12.00
35749	Q. claim	10 July 1932	4 Sep 1935	Canadian National Electric Railway	Joseph Wolfond	Part	2,000
55139	Grant	18 June 1951	12 Aug 1951	Joseph Wolfond and Wife	Clarence Redwood and Irene Redwood	Part	

Table 2: Lot A Land Title Abstract P. 1

Inst. No.	Instrument	Date	Grantor	Grantee	Qty of Land	Value	Remarks
<b>Lot A-</b>							
6-1	201	12 Jan 1914	Edward J. Burcombe	[...] [...] [...] Company Limited	Part	250	
6-6	4228	18 May 1914	John Moore and Wife	[...] [...] [...] Company Limited	Part	300	
6-7	4741	20 Jun 1913	Robert McCarron (Widow)	[...] [...] [...] Company Limited	Part	1.00	
6-8	5220	28 Feb 1925	[...] [...] [...] Company Limited	The Toronto Suburban Railway Company	Part	2.00	
6-9	5237	28 Feb 1925	[...] [...] [...] Company Limited	The Toronto Suburban Railway Company	Part	2.00	
6-10	5246	28 Feb 1925	[...] [...] [...] Company Limited	The Toronto Suburban Railway Company	Part	2.00	
6-11	7149	1 Jun 1932	The Toronto Suburban Railway Company	Canadian National Electric Railway	Part	12.00	
6-12	7163	1 Jun 1932	The Toronto Suburban Railway Company	Canadian National Electric Railway	Part	12.00	
6-13	10081	10 Jul 1932	Canadian National Electric Railway	Joseph Wolfond	Part	2,000	
6-14	11758	18 Jun 1951	Joseph Wolfond and Wife	Clarence Redwood and Irene Redwood	Part		

Table 3: Lot A Land Title Abstract P. 2

6-11	7149	1 Jun 1932	The Toronto Suburban Railway Company	Canadian National Electric Railway	Part	12.00	
6-12	7163	1 Jun 1932	The Toronto Suburban Railway Company	Canadian National Electric Railway	Part	12.00	
6-13	10081	10 Jul 1932	Canadian National Electric Railway	Joseph Wolfond	Part	2,000	
6-14	11758	18 Jun 1951	Joseph Wolfond and Wife	Clarence Redwood and Irene Redwood	Part		

## Occupancy History from City Directories

Table 4 City Directories

Directory Year	Address	Name(s)	Occupation
1882/1883	North Side Bay St	Vacant Lots	
1917	n s Bay	Transformer Station	
1922	n s Bay	TSR car barns	
1930	20 Bay	Can National Electric Car Barns	
1953	w s Bay	Redwood Apartments	
1959	22 James East	Redwood Apartments	A Redwood, C B Gibner, Bruce C Currie, W D Goodall, R
1961	22 James East	Redwood Apartments	A Redwood, C B Elliott, Ross C Comars, Allan D Yearsley, Irene
1966	22 James East	Redwood Apartments	A Redwood, C B Farrell, Wayne C MacMillan, D D Harde, Jos E McIntyre, Janet
1970	22 James East	Redwood Apartments	A Redwood, C B Laughland, A C Farrell, Wayne D Hopper, Chas W E Emberson, Lee E
1975	22 James East	Redwood Apartments	A Redwood, I B Griffiths, D C Trenton, R D Hayward, E E Bell, B E Smith, P
1980	22 James East	Redwood Apartments	A Redwood, C B Connor, D C Leadston, C D McDaid, M E No Return
1985	22 James East	Redwood Apartments	A Redwood, C B Tilt, G C Redwood, J D McDaid, M E Bartlett, D

# Fire Insurance Plans

Figure 1: Fire Insurance Plan 1897, Revised 1907

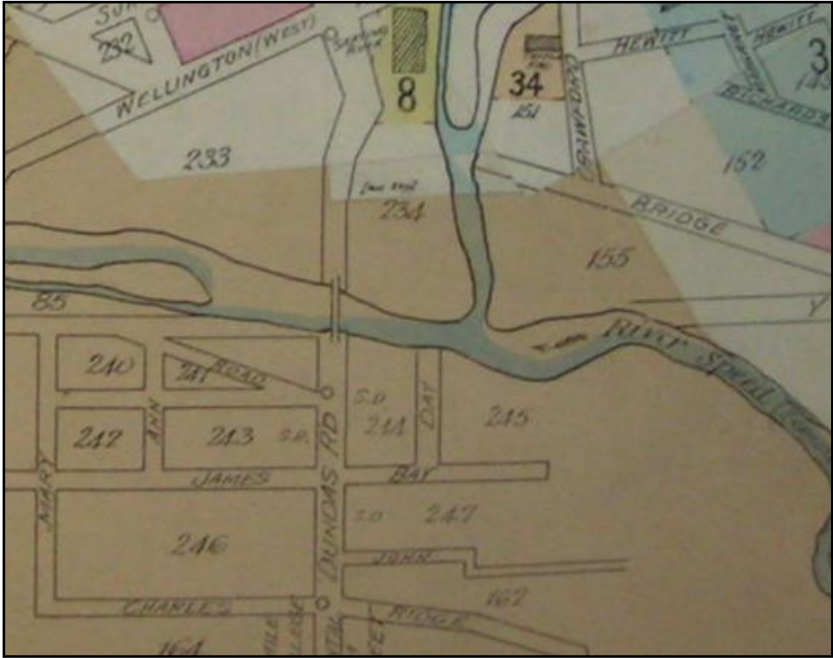
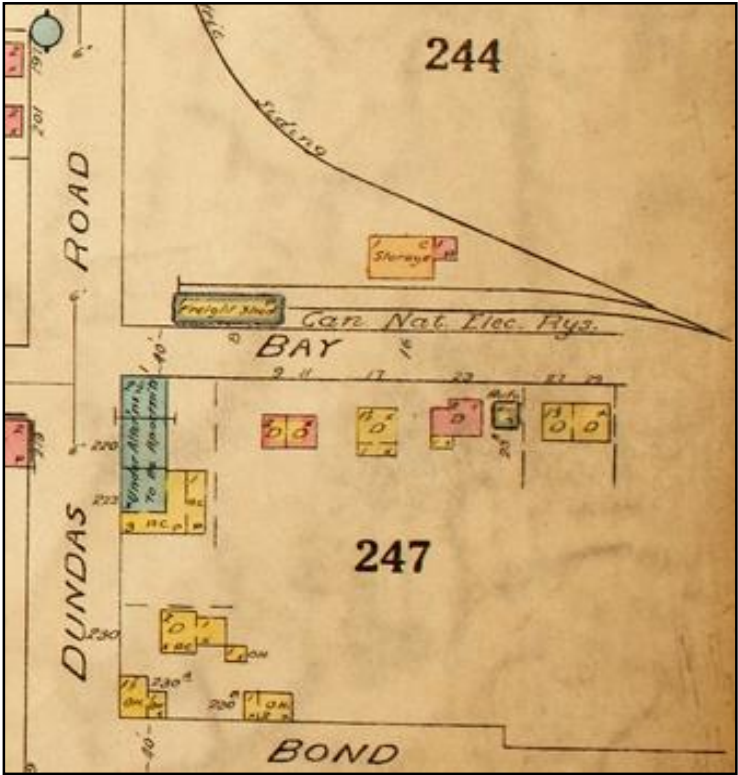


Figure 2: Fire Insurance Plan 1922 (revised 1929)



## Historical Photographs

Figure 3: TSR car on Carden St. Guelph Public Library, F38-0-15-0-0-267.

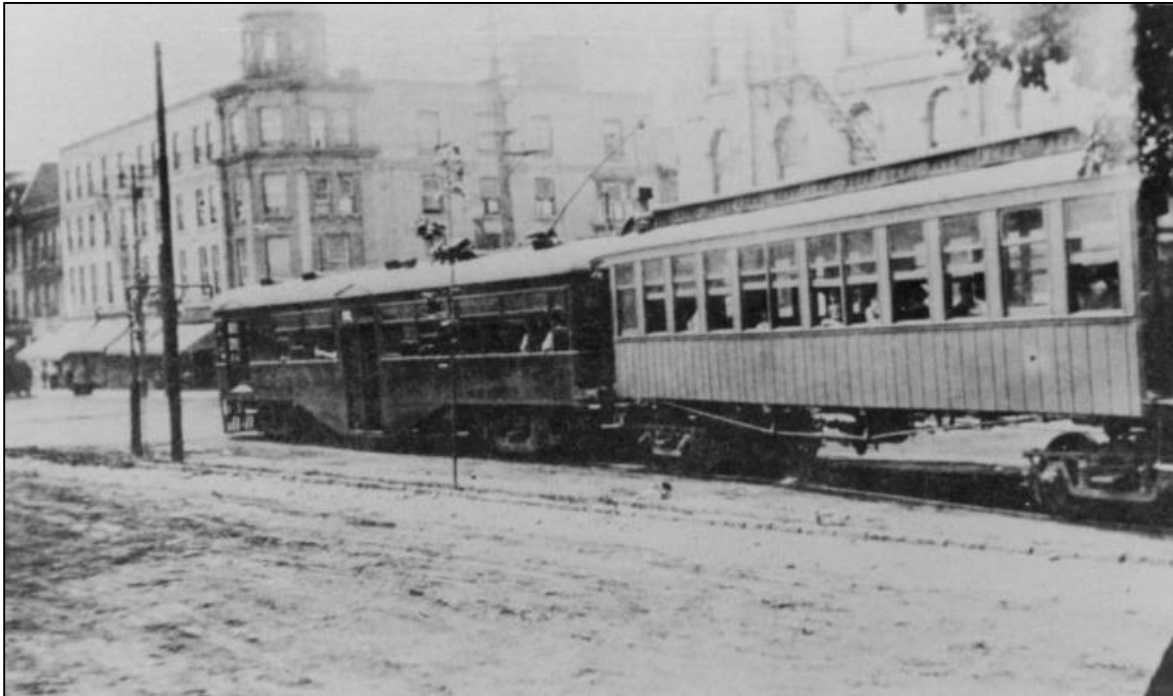


Figure 4: Couling Building Inventory, 1974



Figure 5: Union Station, Toronto, Circa 1935. [Image by Arthur Lane Studios.](#)



Figure 6: Former Union Station, now [Government Conference Centre. Ottawa, 1988.](#)



Figure 7: The completed North Toronto station in 1916, seen from one of the rooftops across Yonge Street. [Source: Toronto Public Library.](#)



Figure 8: Canadian National Railway Station, Hamilton. [John Boyd Photographs Archives of Ontario, 1930.](#)



Figure 9: Georgetown TSR Station,  
Source: [The Georgetown Vault](#).



Figure 10: Georgetown TSR station,  
train car, and crew. Source: [LAC](#).

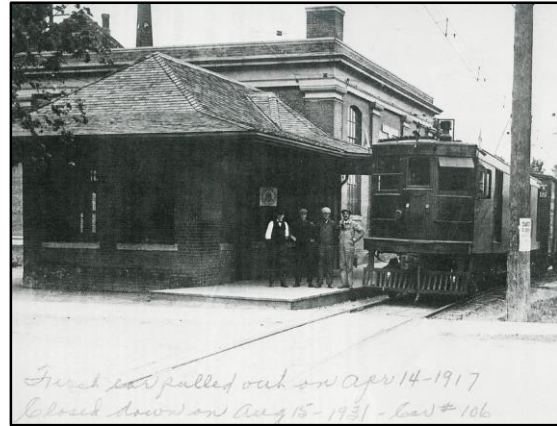


Figure 11: Brick combined station and substation in Georgetown. [Canadian Railway and Marine World August 1917](#).

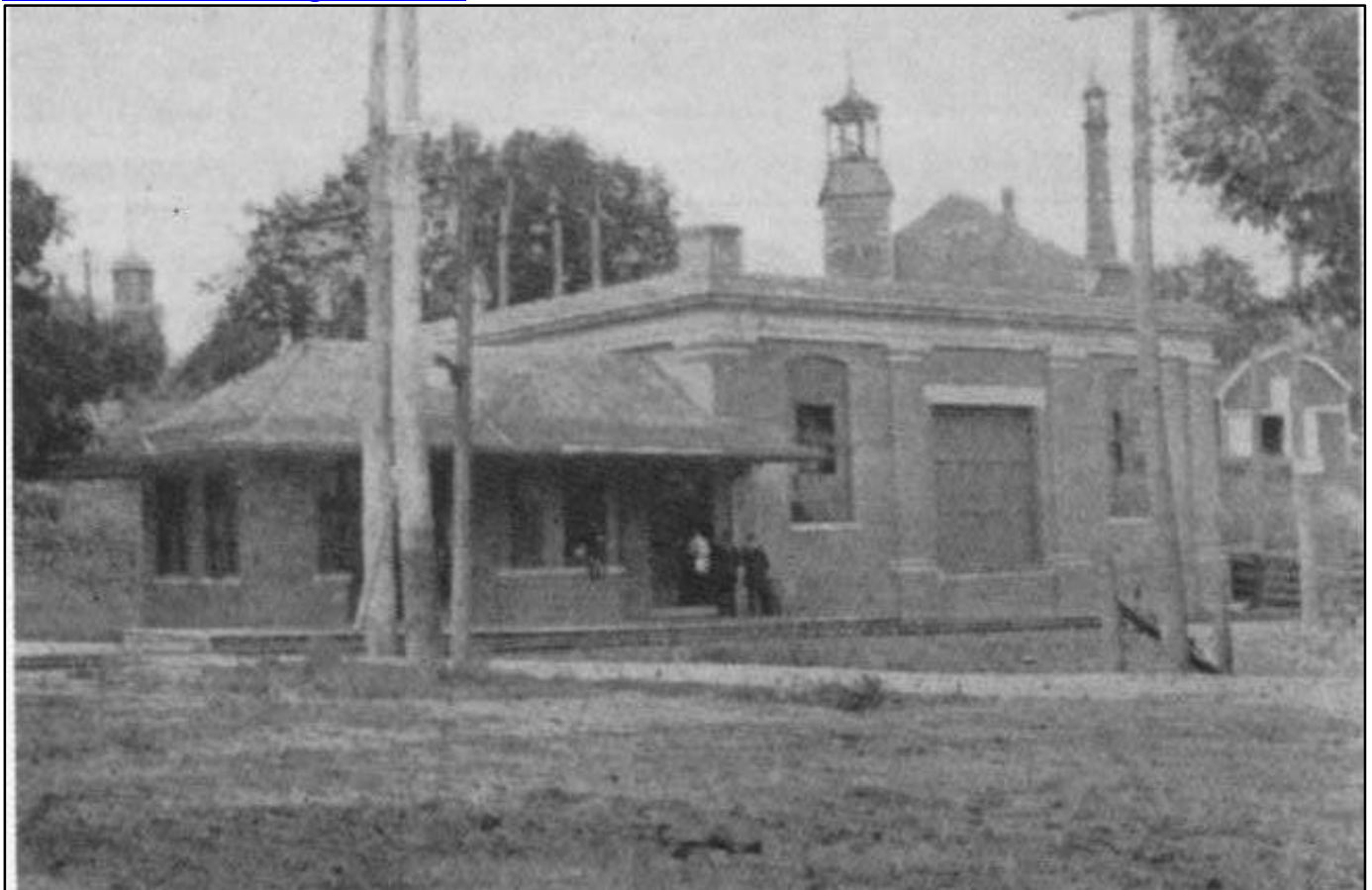




Figure 12: [Photograph of the Former CNR Station](#). North Bay, 1993



Figure 13: [Sketch of the Former CNR Station](#). North Bay, 1920.



Figure 14: Acton Free Press, March 11th, 1915, Page 2.

**THE TORONTO SUBURBAN RAILWAY**  
**Electric Poles are Being Delivered at  
the Station Yard Here**

A large quantity of electric transmission poles have been delivered in the station yard of the Toronto Suburban Railway, on Main Street, during the past two or three weeks. These will be erected as soon as the frost is in out of the ground.

The Guelph Herald says: "That the Toronto Suburban Railway Company intends to proceed with the completion of their road during the coming season is evident. They have taken out a permit from the office of the city engineer for the erection of a new transformer station. This station will be erected on Bay Street, and will cost \$4,000. Architect Briggs, of Toronto, will be in the city the first of next week with the complete plans, and he will at once ask for tenders for the new building. It is understood the company wants it rushed to completion as quickly as possible."