

**Attachment-2 Historic Documents**

Figure 1 - Plan 206 showing the Sleeman property and brewery (registered c. 1872, Mr. Keatings Survey).

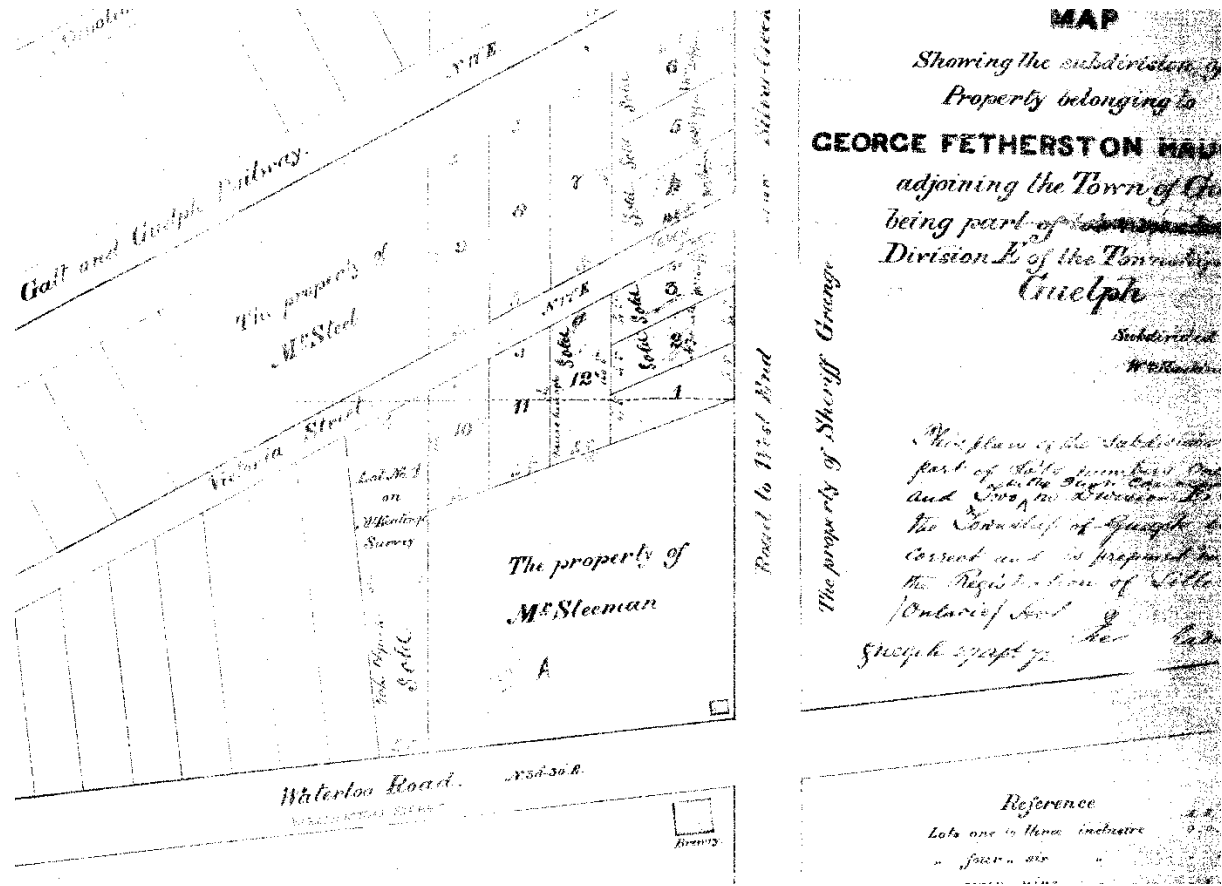


Figure 2 – Title abstract showing transfer of land between John Sleeman and Henry Watson from 1862 until 1863 (ONland).

15911	1862	25 Jan 1862	29 Jan 1862	John Sleeman	Henry Watson	8-2	1870	1870
15912	1862	25 Jan 1862	29 Jan 1862	John Sleeman wife	Henry Watson	8-2	\$800	1870
15913	1862	25 Jan 1862	29 Jan 1862	John Sleeman	Henry Watson	8-2	\$1320	1870
15914	1862	25 Jan 1862	29 Jan 1862	John Sleeman	Henry Watson	8-2	\$5000	1870
15915	1862	25 Jan 1862	29 Jan 1862	Henry Watson	John Sleeman	8-2	1870	1870
15916	1862	25 Jan 1862	29 Jan 1862	John Sleeman wife	Henry Watson	8-2	\$2000	1870

Figure 3 - Detail from J. Smith's Map of the Town of Guelph, 1855 showing the area of the future Silver Creek Brewery and Sleeman House on the west side of Silvercreek Road.



Figure 4 – Section of the 1877 Township of Guelph map illustrating the Sleeman's property proximity to water sources.



Figure 5 – Map of Guelph Township from the 1906 County of Wellington Historical Atlas illustrating location of the Sleeman House and brewing operations.

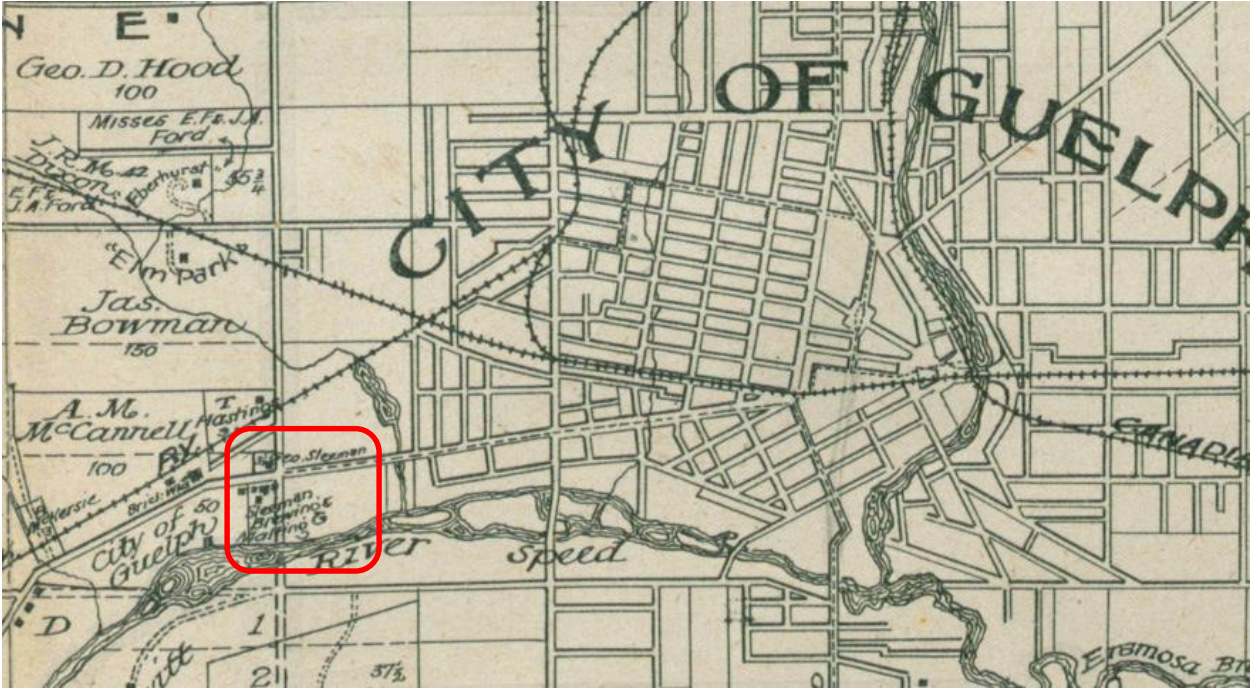


Figure 6 - Title abstract showing transfer of land between John Sleeman and George Sleeman in 1865 (ONland).



Figure 7 – Image of John W. Sleeman with his great grandfather George Sleeman, c. 1995 (Guelph Civic Museum 2013.37.13)



Figure 8 – Colour (left) and black and white (right) details from Sheet 3 of the Fire Insurance Plan of Guelph, 1897 (revised 1907)

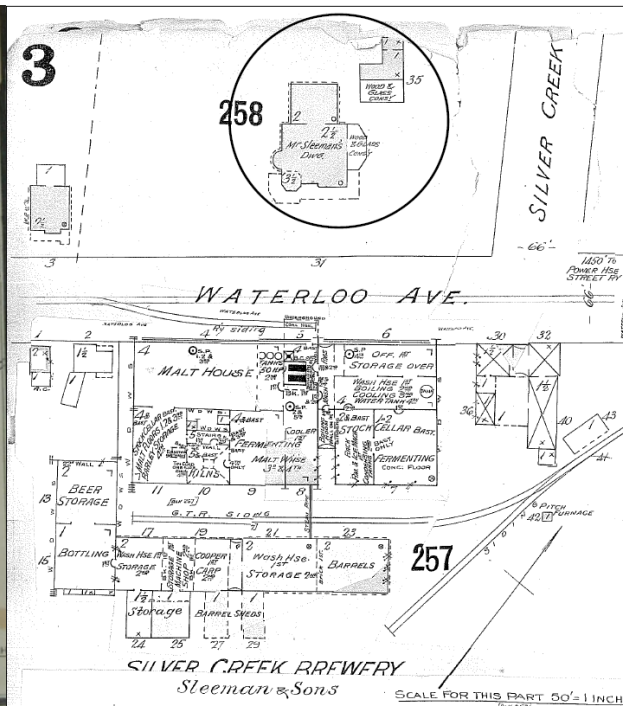
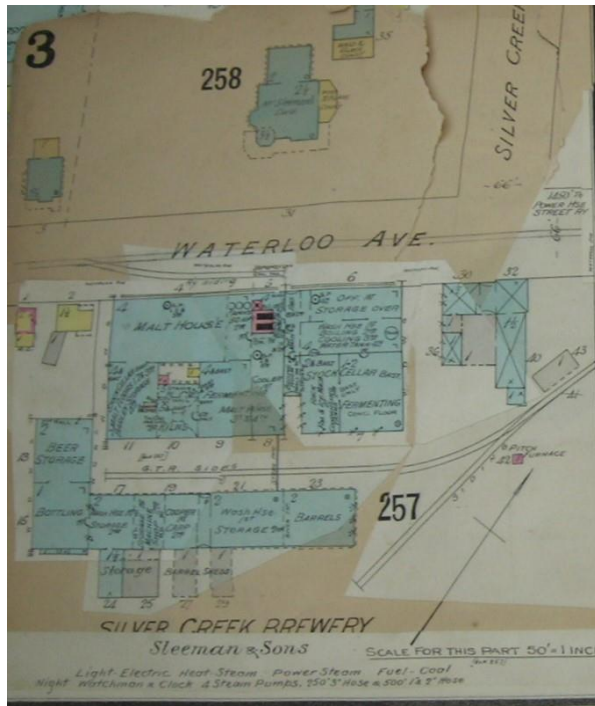




Figure 9 – Picture of George Sleeman, c.1880 (Guelph Civic Museum 2009.32.951)



Figure 10 – Sleeman Brewery employees pictured in front of a plant, c. 1895-1905s  
(Guelph Civic Museum Grundy 245)



Figure 11 – Advertisement for Silver Creek Brewery, 1876 (Guelph Civic Museum 2009.32.950)

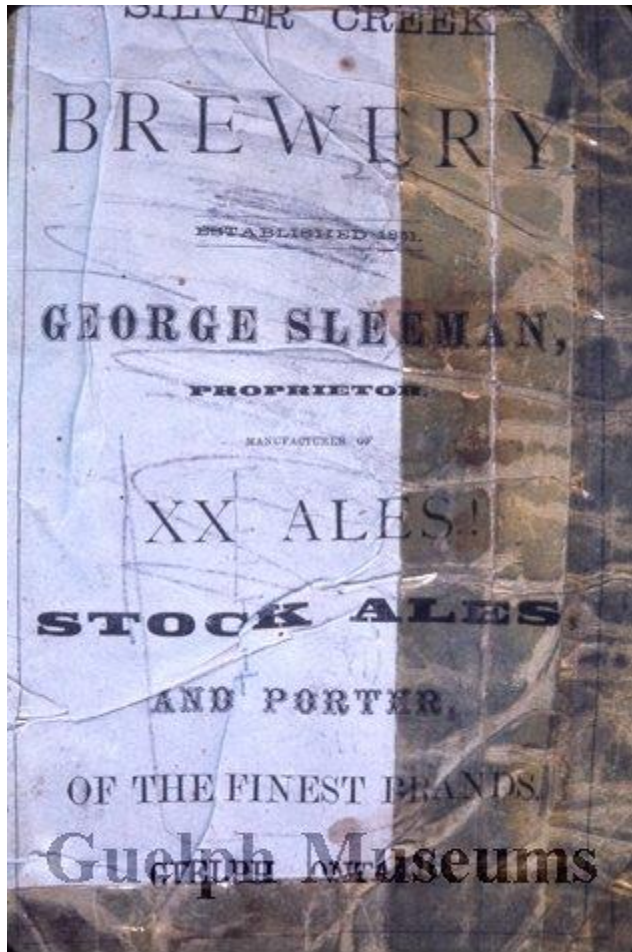


Figure 12 – Workmen laying streetcar tracks in front of the Sleeman House, c. 1900  
(Wellington County Museum & Archives A1952.312.3B)



Figure 13 – The Sleeman family in front of the original Sleeman House on the Waterloo Avenue property, c. 1800 (Wellington County Museum & Archives 1952.312.3C)



*Wellington County Museum and Archives*

Figure 14 – The Sleeman House in winter, c. 1905-1915 (Guelph Civic Museum 1981.67.3)



Figure 15 – The Sleeman House with the Sleeman family on the porch, c. 1895  
(Guelph Civic Museum 2009.32.4341)



Figure 16 – Photo of the Sleeman House, c. 1908 (Guelph Civic Museum 2009.32.4338)

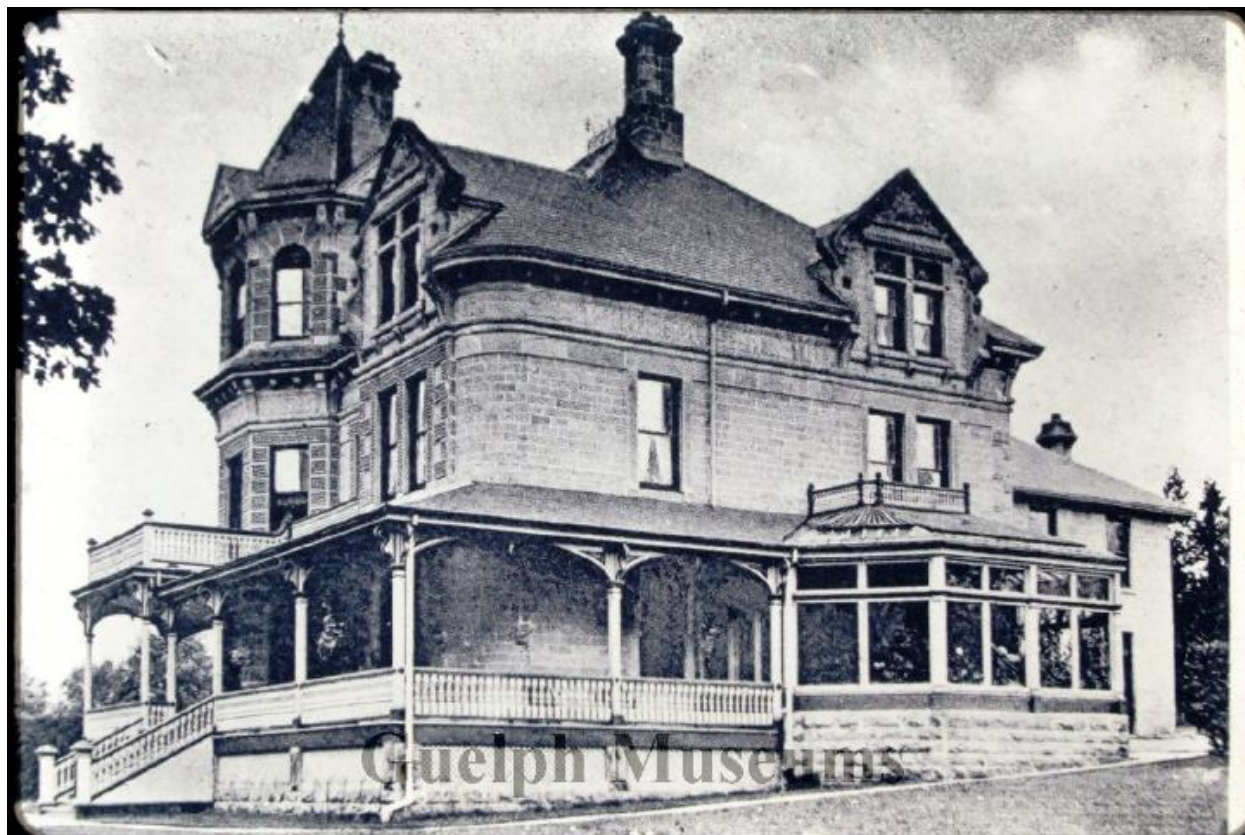




Figure 17 - Floorplan of the first floor of the Sleeman House (Sleeman Collection, McLaughlin Library Archive & Special Collections).

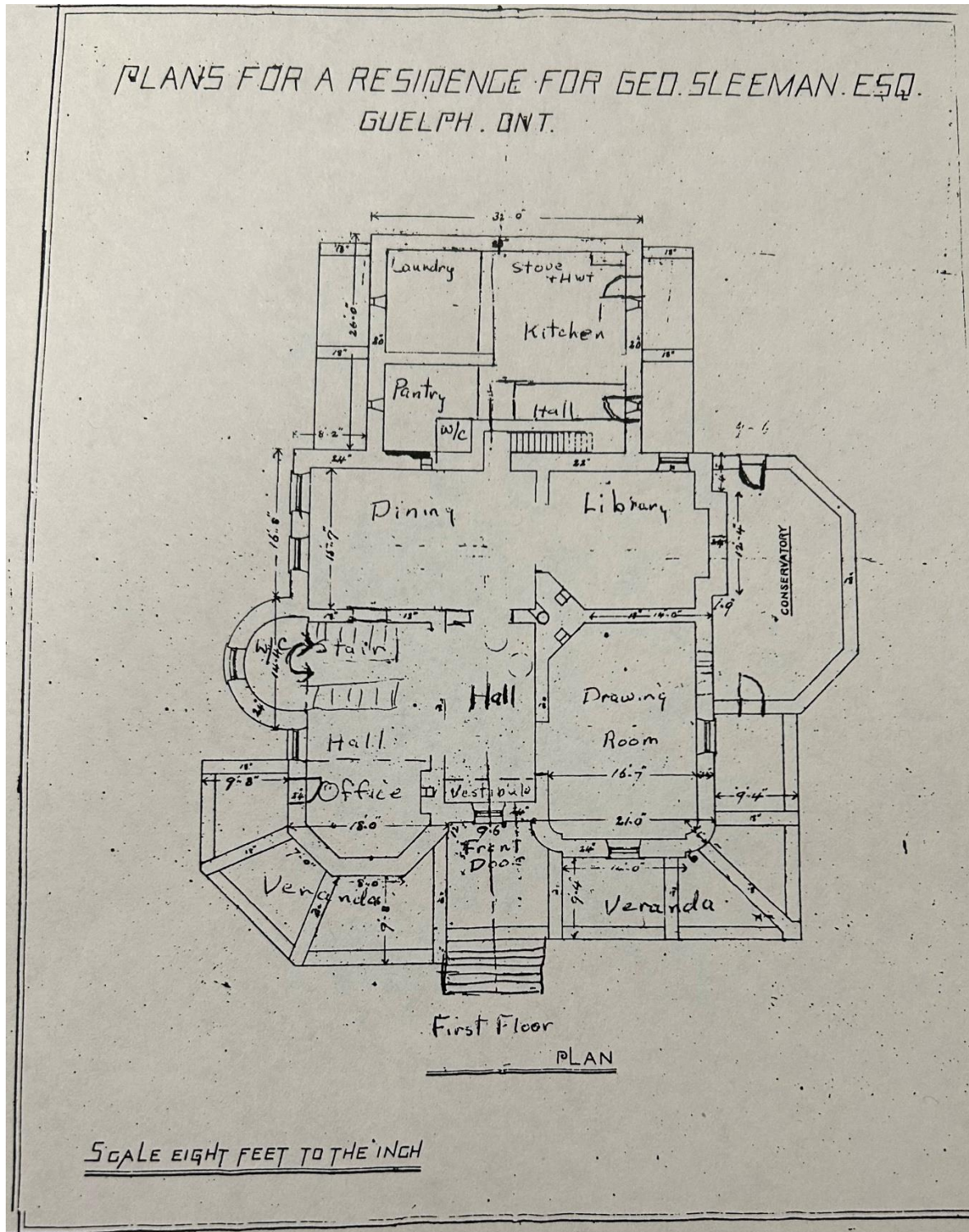


Figure 18 – Floorplan of the second floor of the Sleeman House (Sleeman Collection, McLaughlin Library Archive & Special Collections).

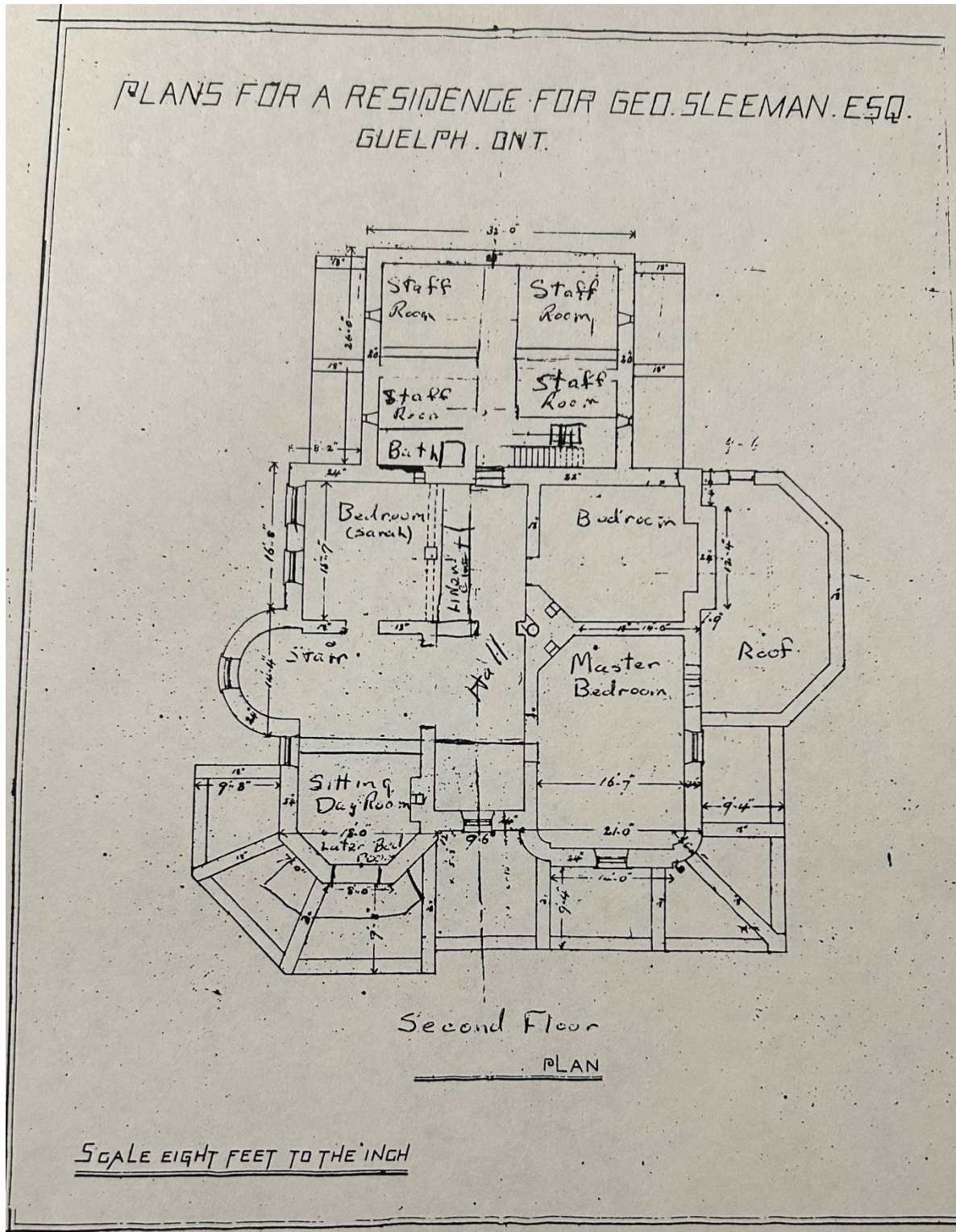


Figure 19 – Floor plan of the third floor of the Sleeman House (Sleeman Collection, McLaughlin Library Archive & Special Collections).

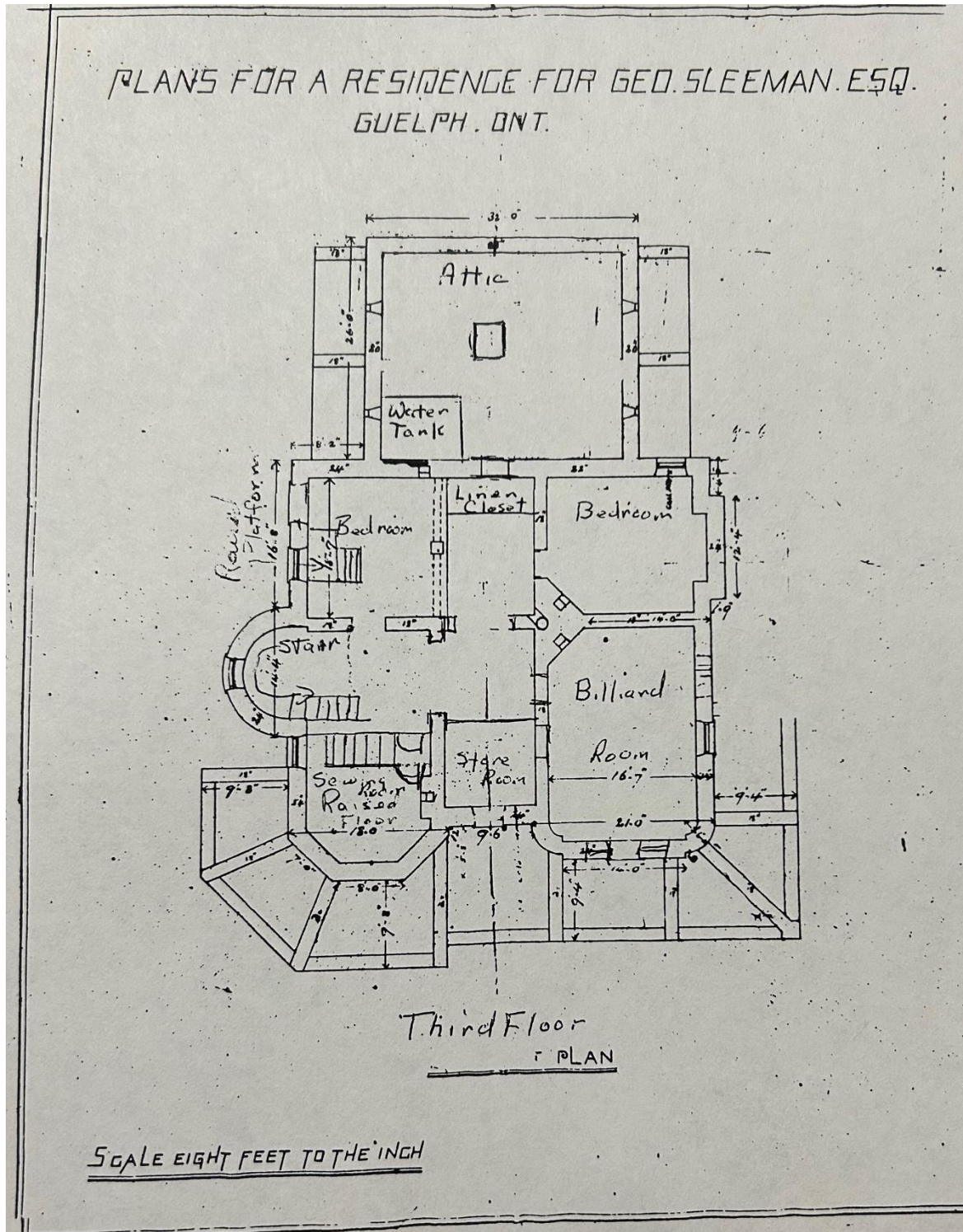


Figure 20 – Floor plan of the basement of the Sleeman House (Sleeman Collection, McLaughlin Library Archive & Special Collections).

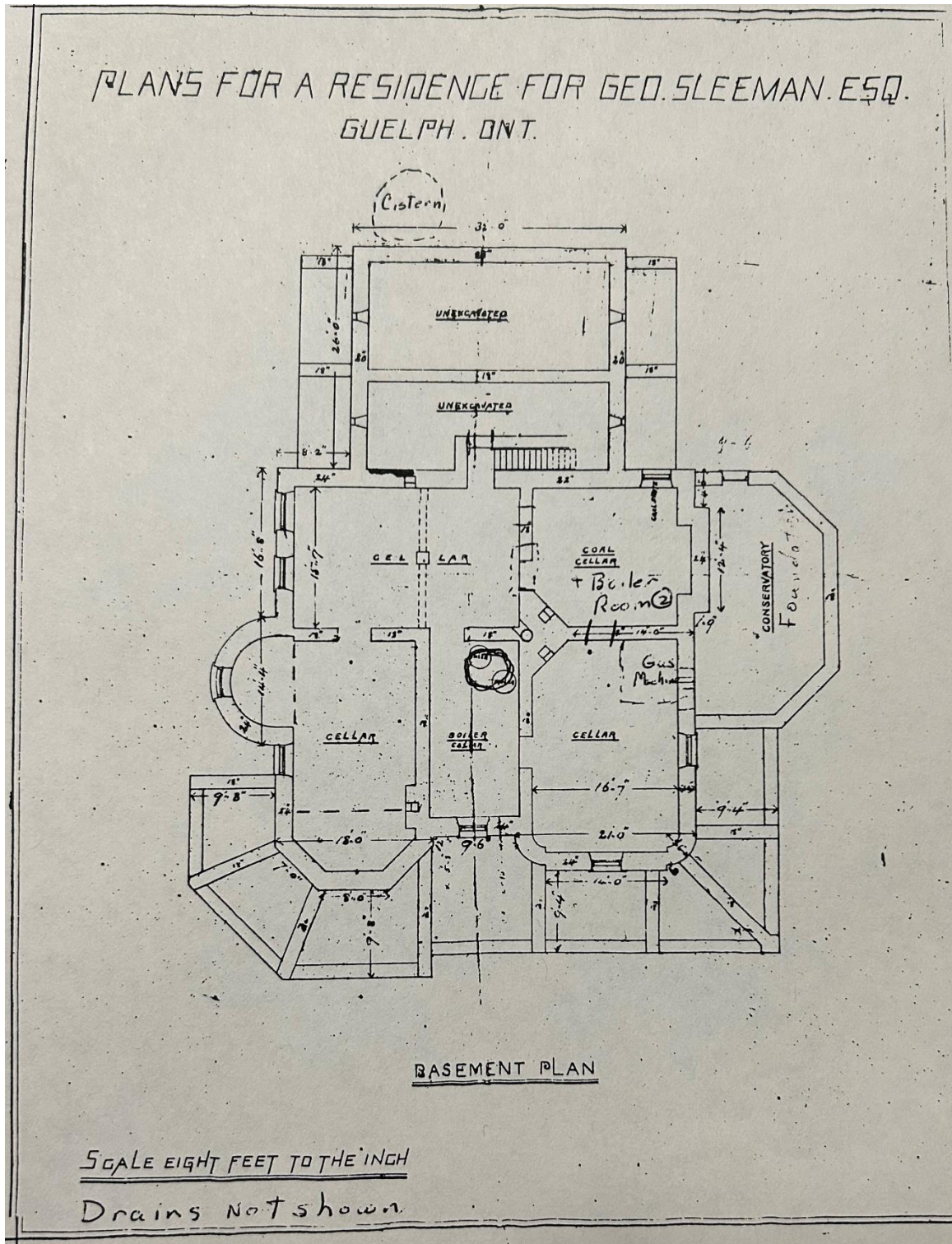


Figure 21 – Schematic of the Sleeman family property on Waterloo Avenue (M. Inch, 1995).

