

Attachment-3 Historical Images

Figure 1 - Detail from 1858 Map of the Township of Guelph. Yellow highlight indicates Lot 5, Concession 1, Division E.

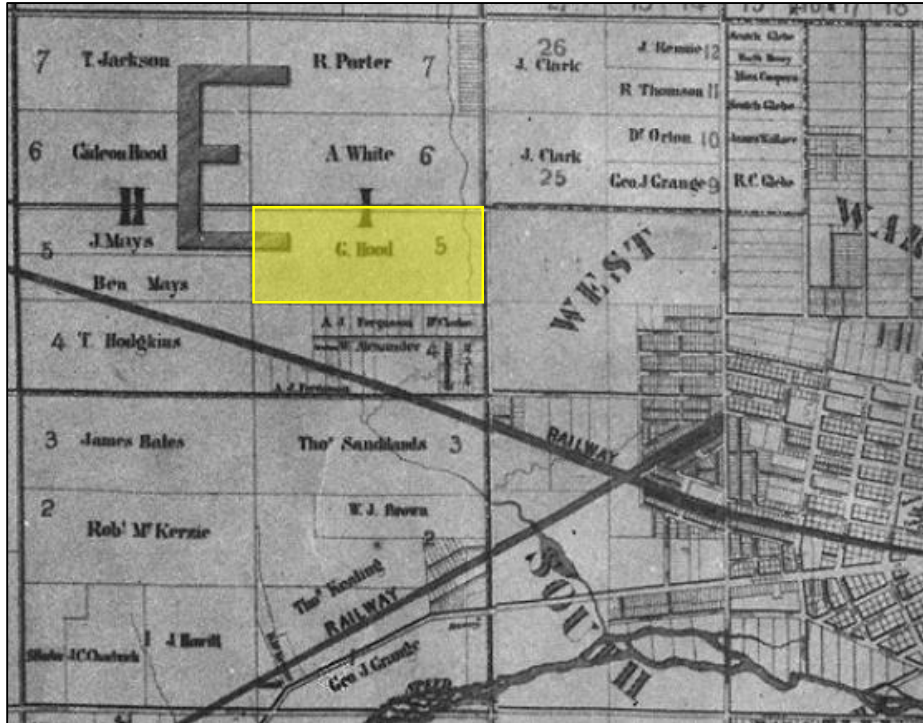


Figure 2 - Detail of Township of Guelph from 1861 Map of the County of Wellington. Yellow highlight indicates Lot 5, Concession 1, Division E.



Figure 3 – Detail from Map of Guelph Township from the 1877 Historical Atlas of the County of Wellington. Yellow highlight indicates Lot 5, Concession 1, Division E.



Figure 4 - Detail from map of the Township of Guelph from the 1906 Historical Atlas of the County of Wellington. Yellow highlight indicates Lot 5, Concession 1, Division E.



Figure 5 - Detail of Guelph Township from 1906 Atlas of the County of Wellington. Yellow highlight shows properties owned at that time by Hood family members.

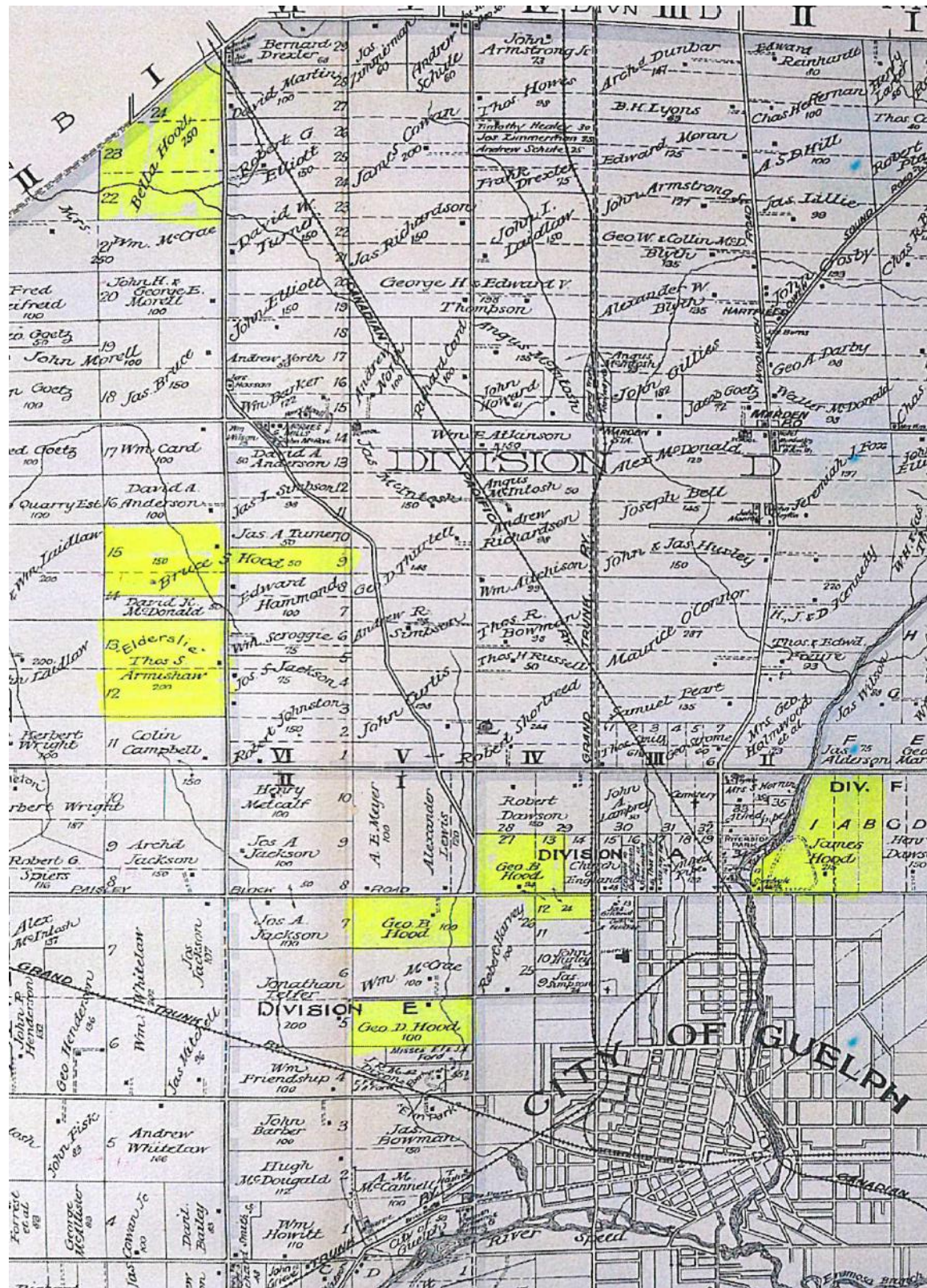


Figure 6 - Gravestone of George Hood and his wife Elizabeth (Scott) at Woodlawn Cemetery, Guelph.



Figure 7 - (Left) Portrait photo of Gideon Hood from the 1906 Atlas of the County of Wellington); (Right) photo of Gideon Hood seated, age 91 (Wellington County Museum and Archives, Photo 49166 A2017.20).

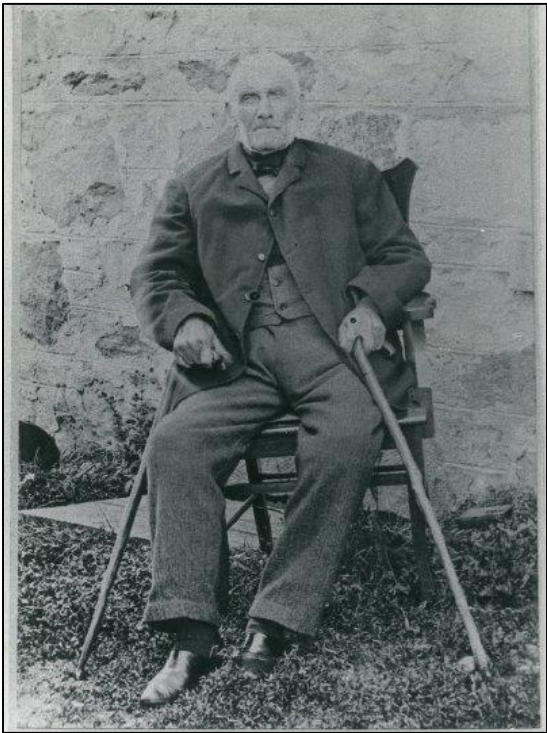


Figure 8 - Undated photo of Hood family members in front of the Fountainhead farmhouse. (Photo: Guelph Mercury)

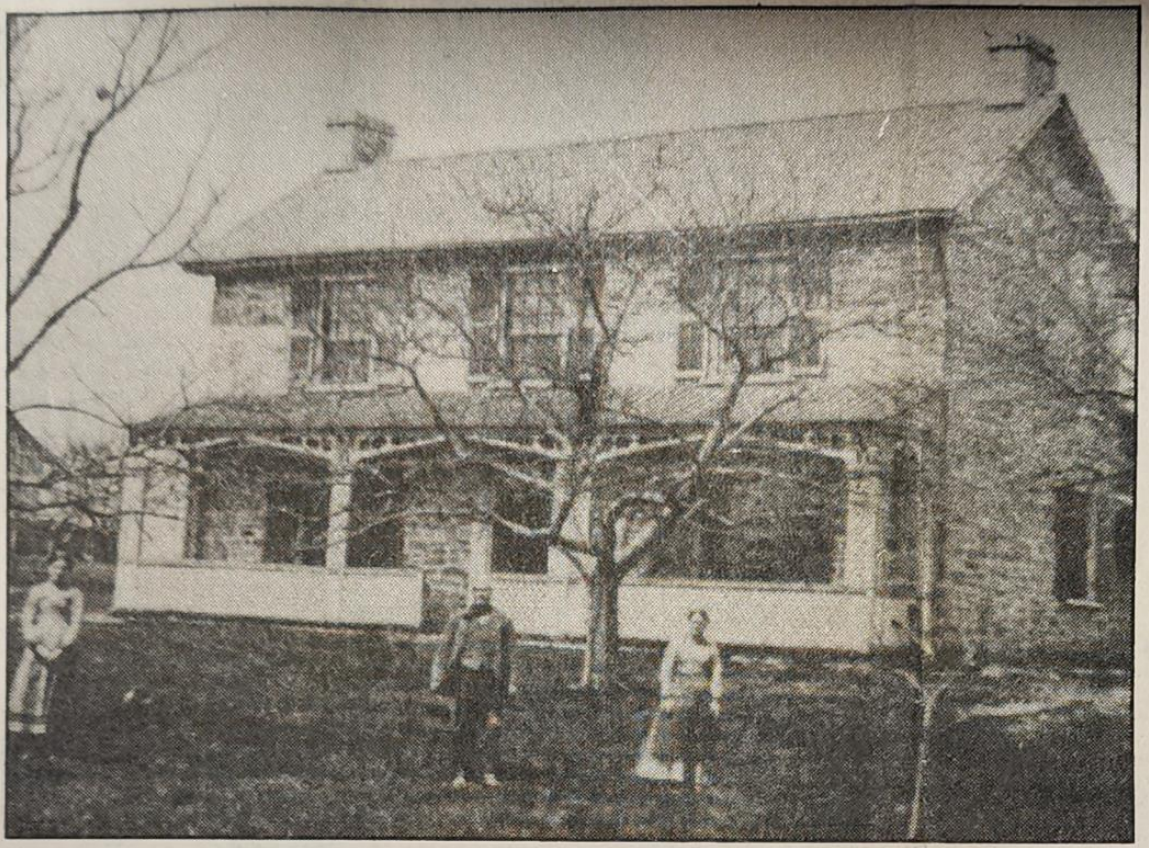


Figure 9 - Plan 615 (sheet 2 of 2). (City of Guelph Engineering Services)

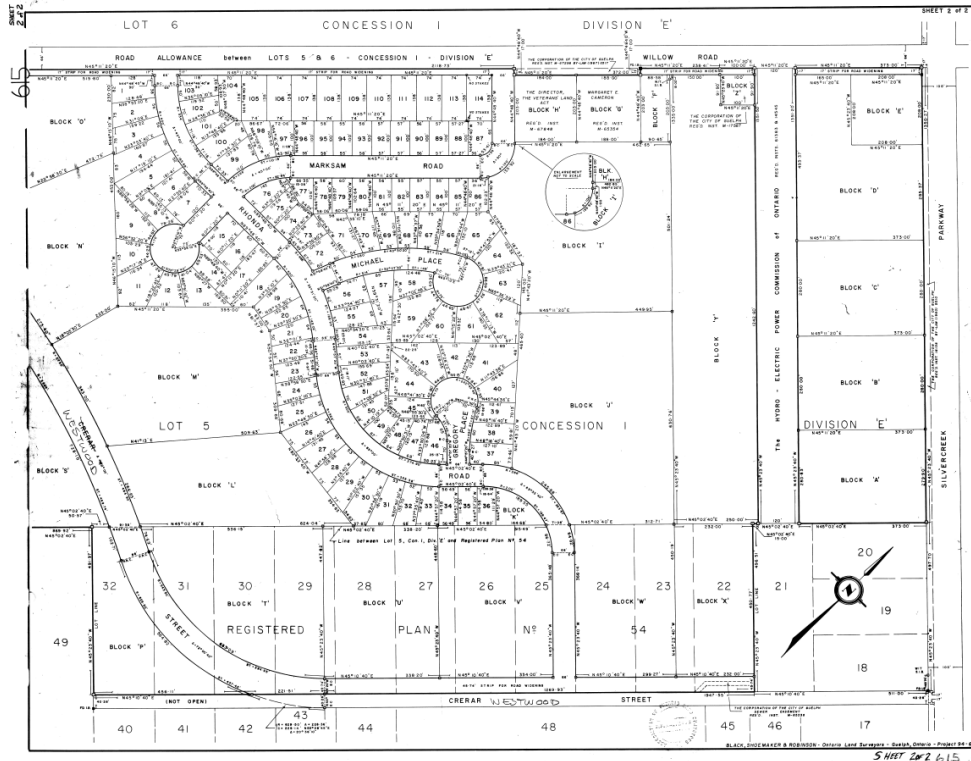
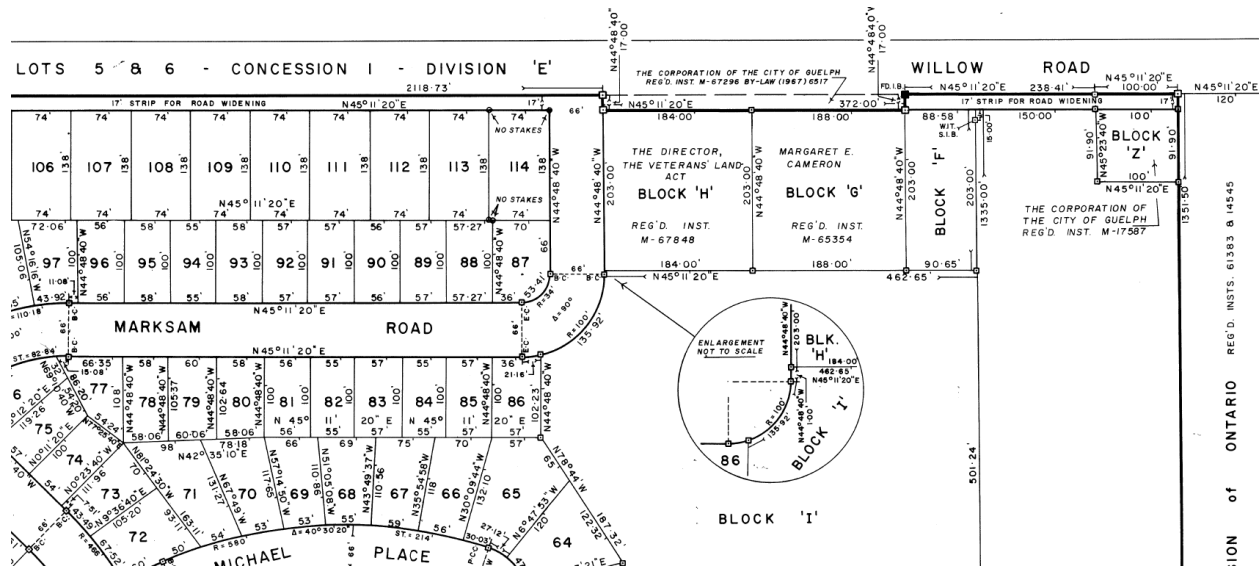


Figure 10 - Detail from Plan 615 (sheet 2 of 2) showing Block 'H'. (City of Guelph Engineering Services)



ON TARIO REG'D. INSTS. 61383 & 14545