

Attachment 1 – Property Location, Historic Images, and Current Photographs

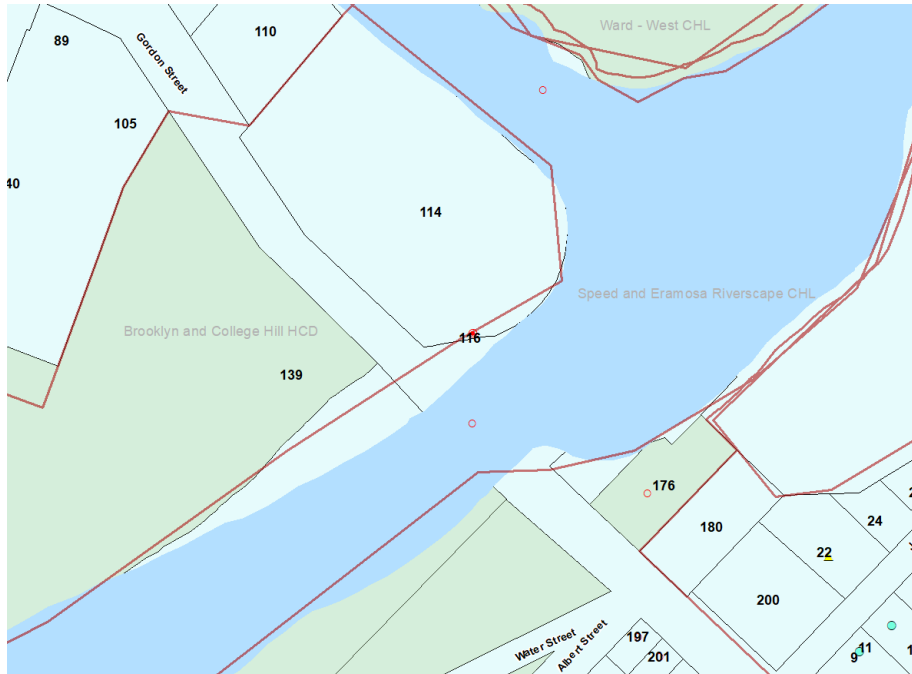


Figure 1 - Location of subject property. (City of Guelph GIS)



Figure 2 - Orthographic photo showing subject property. (City of Guelph GIS)



Figure 3 - Subject property seen from Gordon Street bridge. (Photo: S. Robinson, 2024)

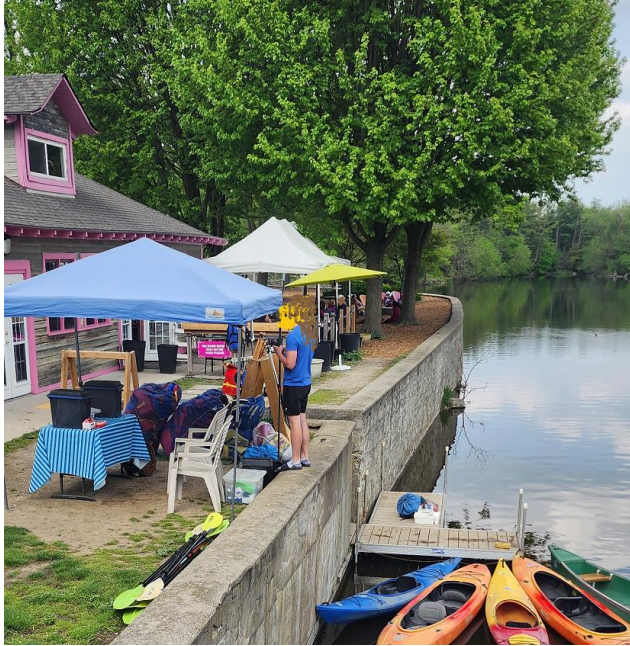


Figure 4 – Boat rental area (left); Corner of retaining wall at stairs (right). (Photos: S. Robinson, 2024)

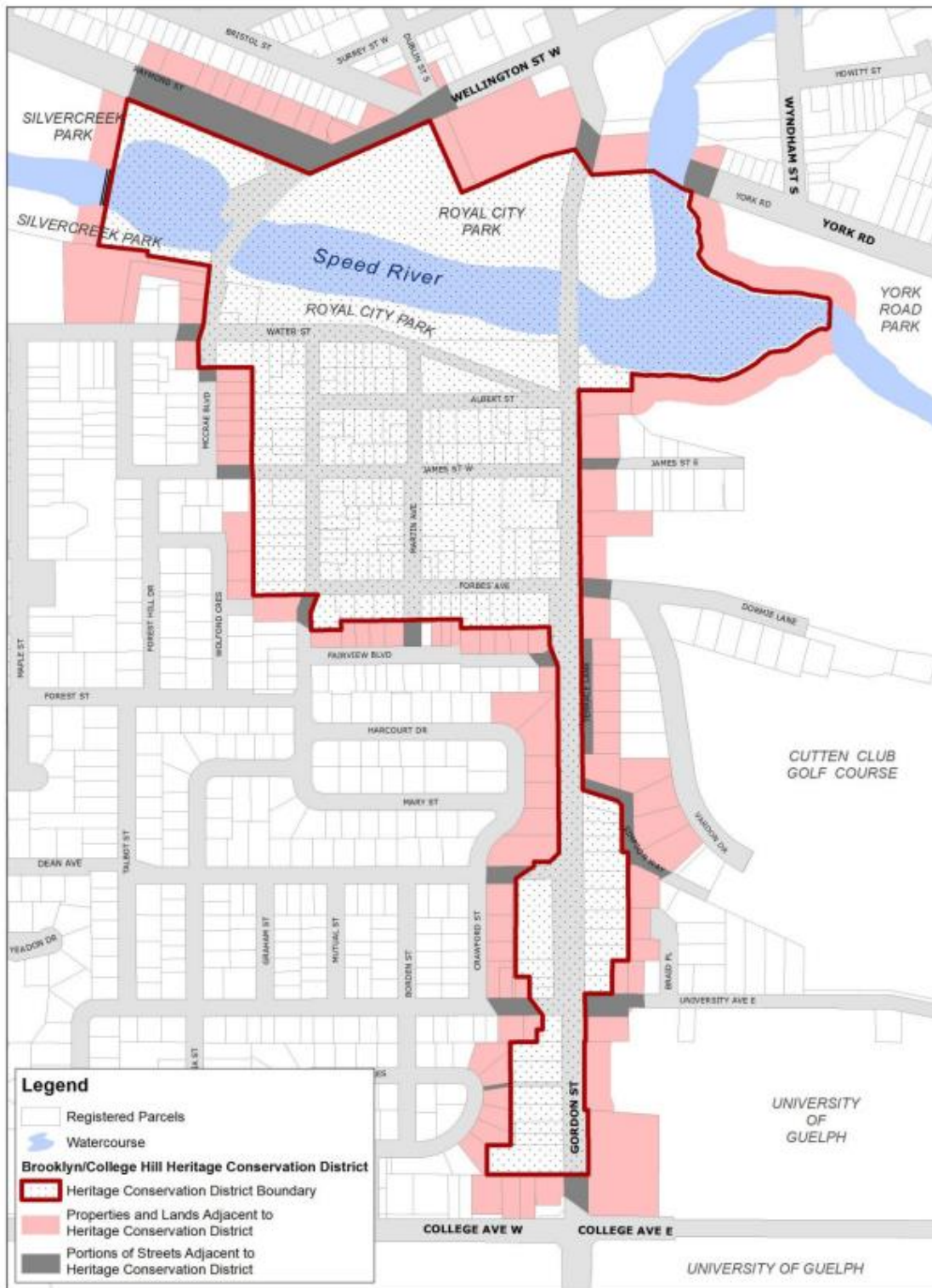


Figure 5 - Brooklyn and College Hill Heritage Conservation District boundary. (City of Guelph)



Figure 6 - Detail from Fire Insurance Plan of Guelph, 1922 (revised 1929). (Guelph Civic Museum)



Figure 7 - Detail from air photo of Brooklyn area of Guelph c. 1940. (Guelph Civic Museum 979.35.9)



Figure 8 - Detail from Fire Insurance Plan of Guelph, 1946. (Guelph Civic Museum)



Figure 9 - View along wall to covered bridge. (Photos: S. Robinson, 2024)

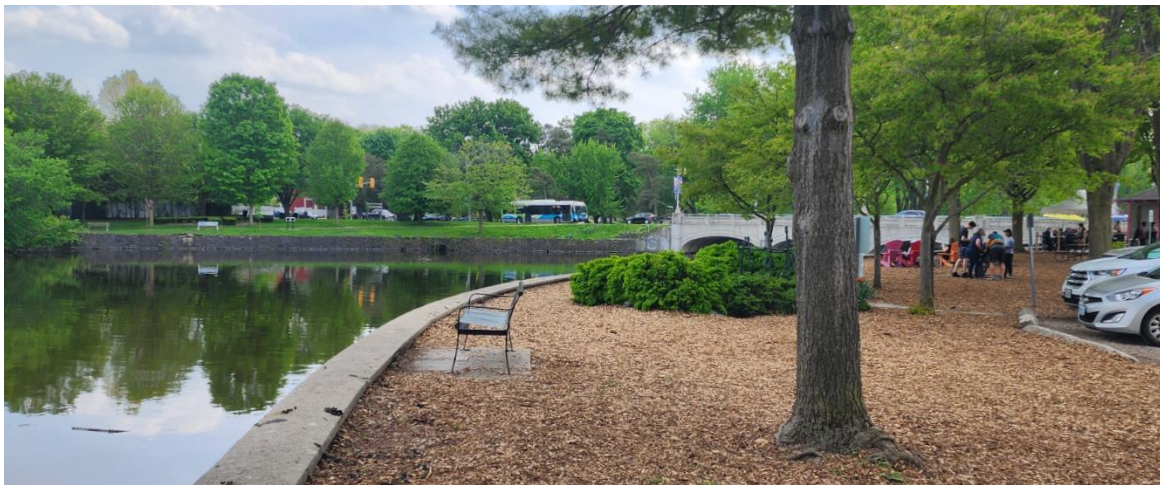


Figure 10 - View south along wall.(Photos: S. Robinson, 2024)

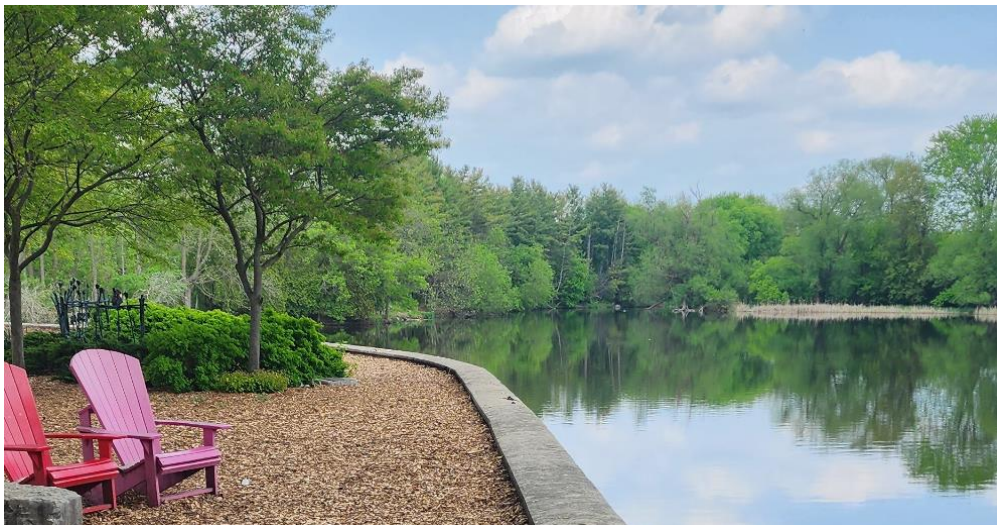


Figure 11 - View to confluence. (Photos: S. Robinson, 2024)



Figure 12 - View through installation. (Photos: S. Robinson, 2024)

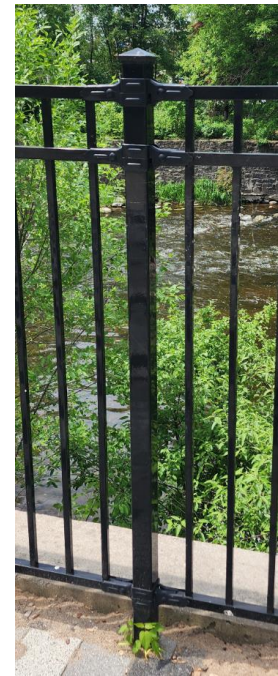
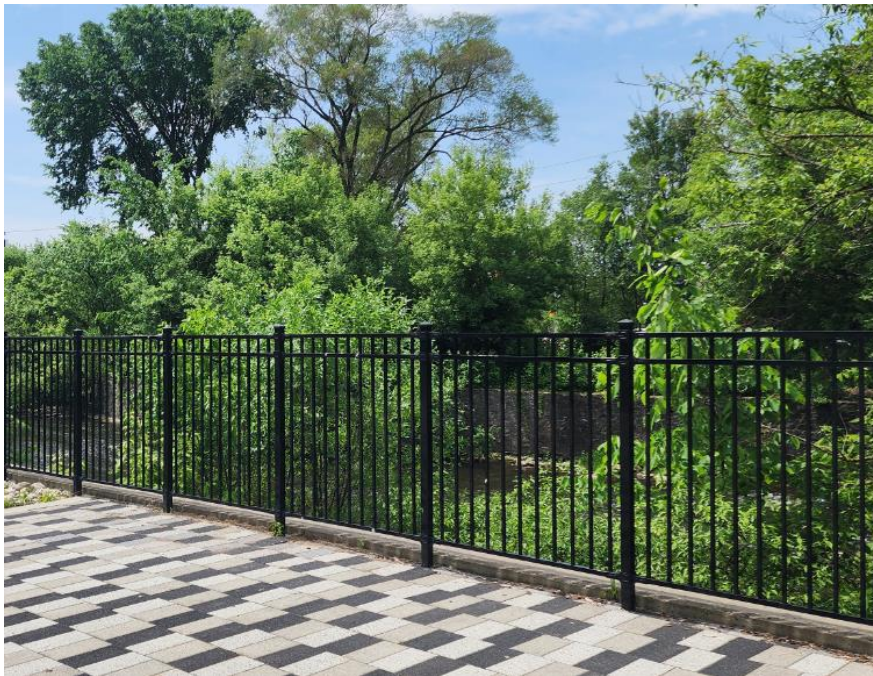


Figure 13 - Example of metal railing installed along the Riverwalk at Metalworks. (Photos: S. Robinson, 2024)