

Attachment-2 Historical Image and Documents

Figure 1 - Detail from Plan 99 (Fergusson's Survey) registered in 1858.

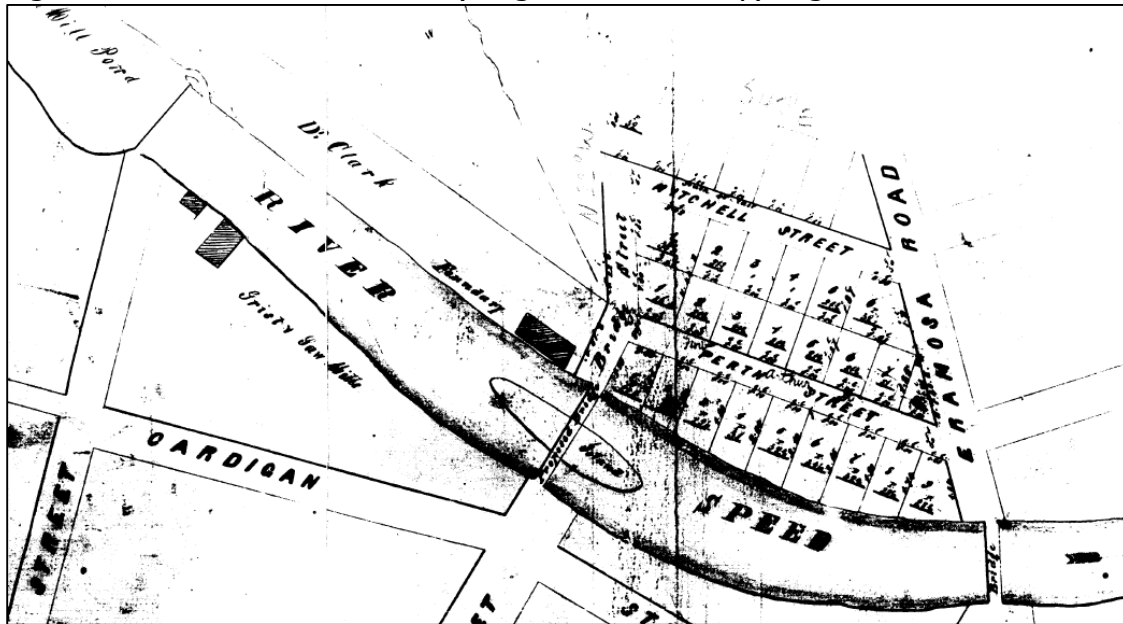


Figure 2 - Detail from Cooper's Map of the Town of Guelph (1862) showing a building footprint at the northwest corner of Eramosa Road and Perth St. (Guelph Civic Museum)



Figure 3 - Detail from Bird's Eye Map of Guelph, 1872 (Guelph Civic Museum)



Figure 4 - Detail from Cooper's Map of the Town of Guelph (1875) indicating "Fergusson Survey" and showing a building footprint at the northwest corner of Eramosa Road and Perth St. (Guelph Civic Museum)



Figure 5: Hacking Directory (1873) indicates David Brown, groceries and provisions

practical watchmaker, 30 Wyndham

Brown D., groceries and provisions, 38 Eramosa Road	Bu
Brown Geo. laborer, bds Queen st	Bu
Brown Jas. clerk, bds 24 Wyndham st	Bu

Figure 6: Hacking Directory (1873) David Brown indicated as owner and resident of the single building at 38 and 40 Eramosa Road.

36 — Clyne
Perth st intersects here.
38 { D Brown
40 {
48 E Powell
58 Jno Anderson.

Figure 7: 1882 City Directory, Mrs. M. Hyde Grocer and resident

181 Norfolk
HYDE JOHN M. steward General Hospital, Delhi
HYDE M. MRS. groceries, cor. Eramosa rd. and Perth,
h. do.

Figure 12 - Detail from 1946 Fire Insurance Plan. (Guelph Civic Museum)

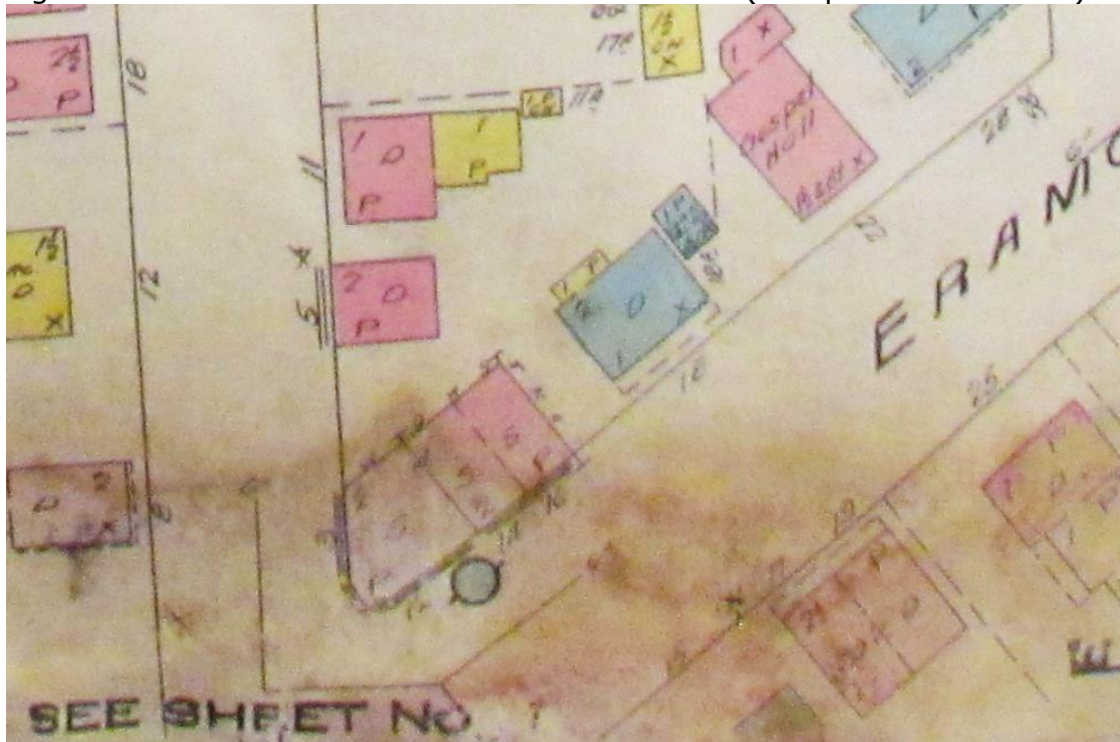


Figure 13 - Detail from 1960 Fire Insurance Plan. (Guelph Civic Museum)

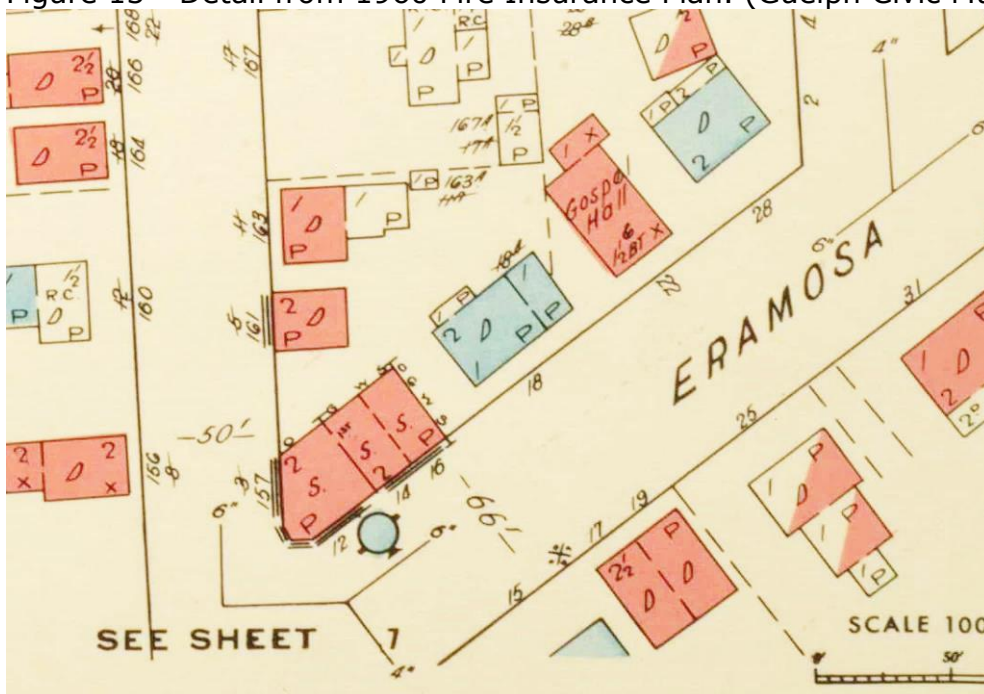


Figure 14 - Photo of property in 1974. (Couling Architectural Inventory)



Figure 15 - Photo of property in 1975. (Couling Architectural Inventory)





entory)

Figure 17 - Stable building facing Arthur St N before black paint applied. (Photo: S. Robinson, 2014)

