

150 Delhi Street - Homewood Manor

Heritage Guelph

July 8, 2024

ERA

Proposed Interventions

Delhi Street
Elevation

3

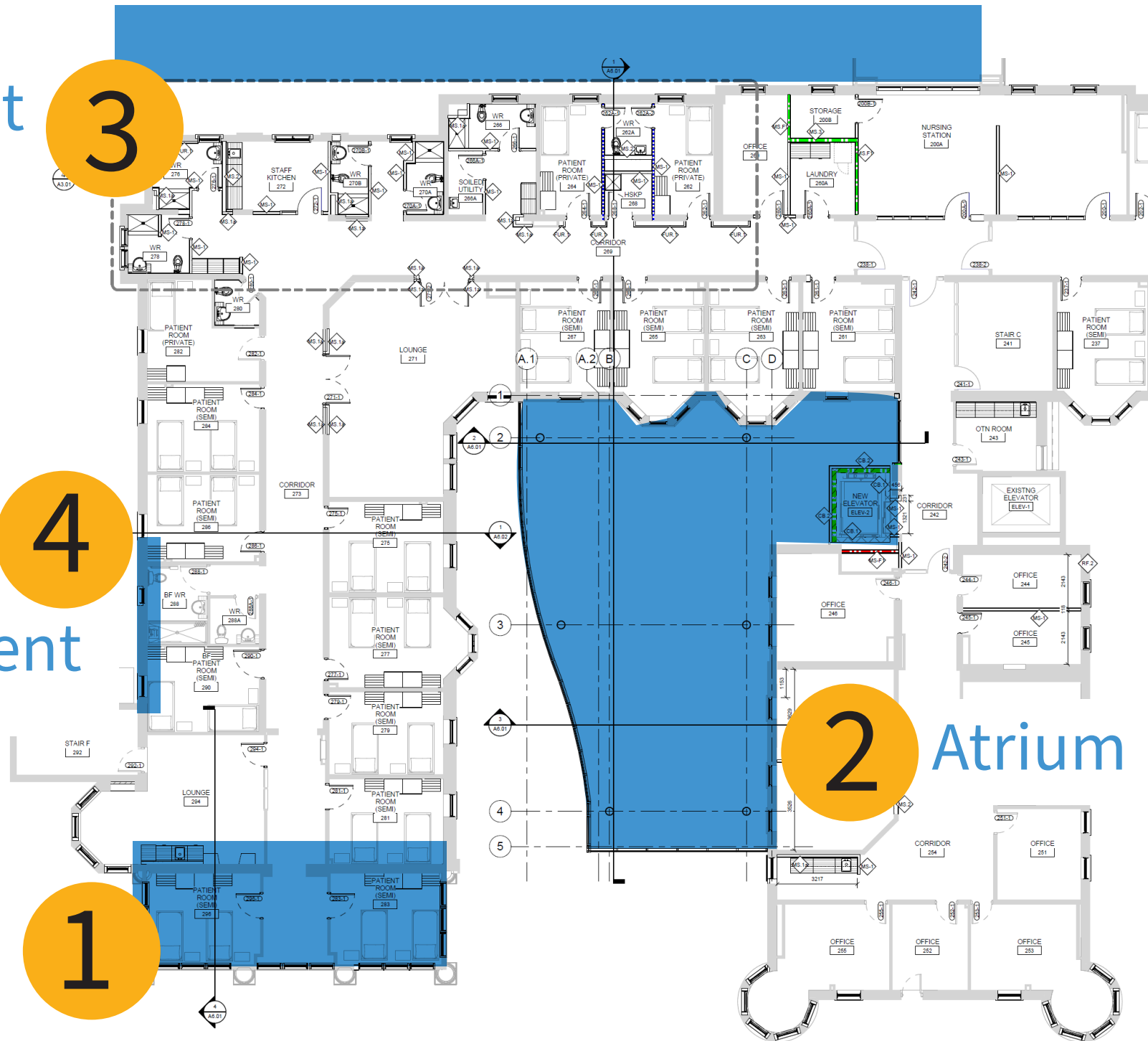
Window
Replacement

4

Portico
Enclosure

1

2 Atrium

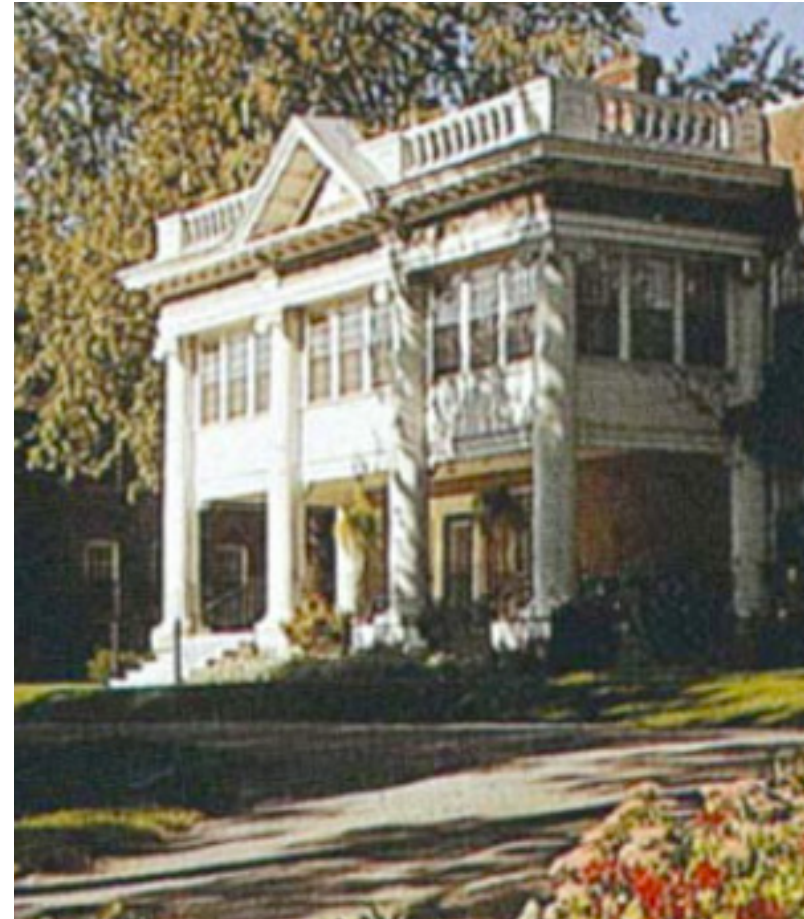
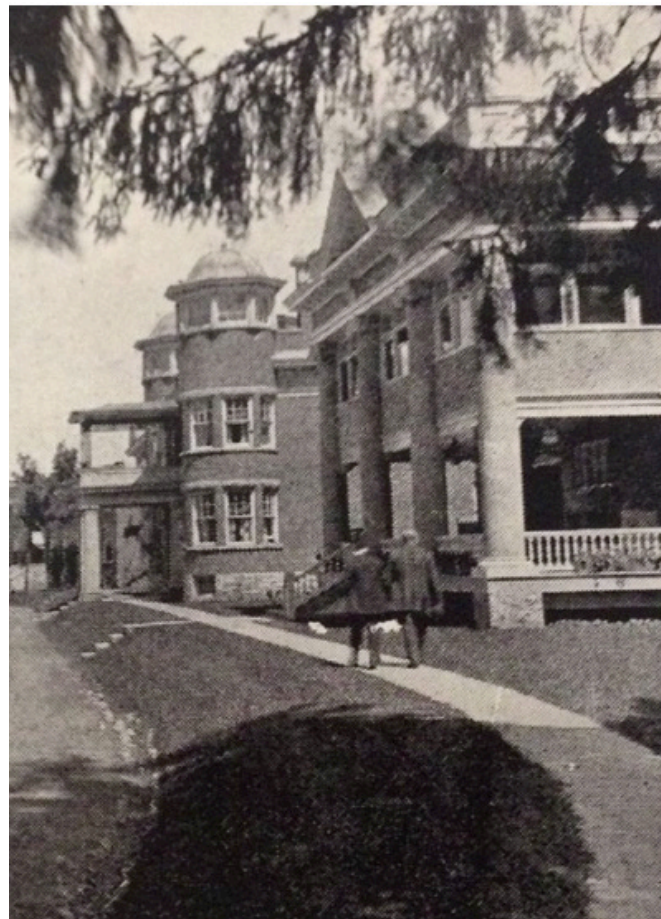


1

Portico Enclosure

Design Intent

- Retain 'light-ness' of the ground floor
- Avoid mimicking existing condition of 2nd floor treatment
- Maintain legibility of column grandeur and shape



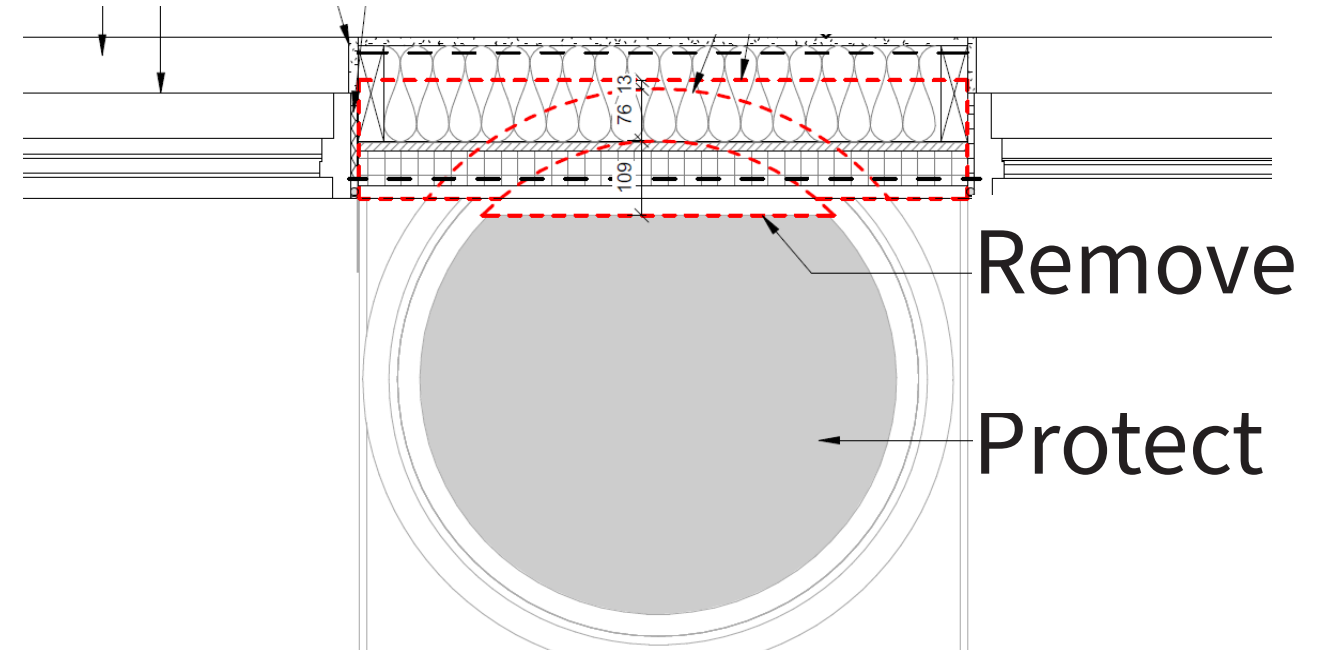
Portico Enclosure

Precedents



Portico Enclosure

Proposed



2

Atrium

Design Intent

- Simple and clean interface with the existing building fabric
- Conservation of legible E-shaped plan with courtyard as ‘void’
- Open new views to the Speed River valley from within
- Removal of non-original exterior stairwell



Atrium

Required Alterations

- Two original window openings converted to doorway opening
- Eight original basement window openings infilled
- Four previously infilled original window openings reinstated



Atrium

Required alterations

- Removal of open balustrade within new atrium to allow for watertight envelope
- Evaluation of salvaged balustrade for reinstatement where previously removed



Atrium



3

Delhi Street Corridor

Design Intent

- Re-clad existing deteriorated corridor addition
- Improve relationship with Delhi Street, maximize transparency and visibility

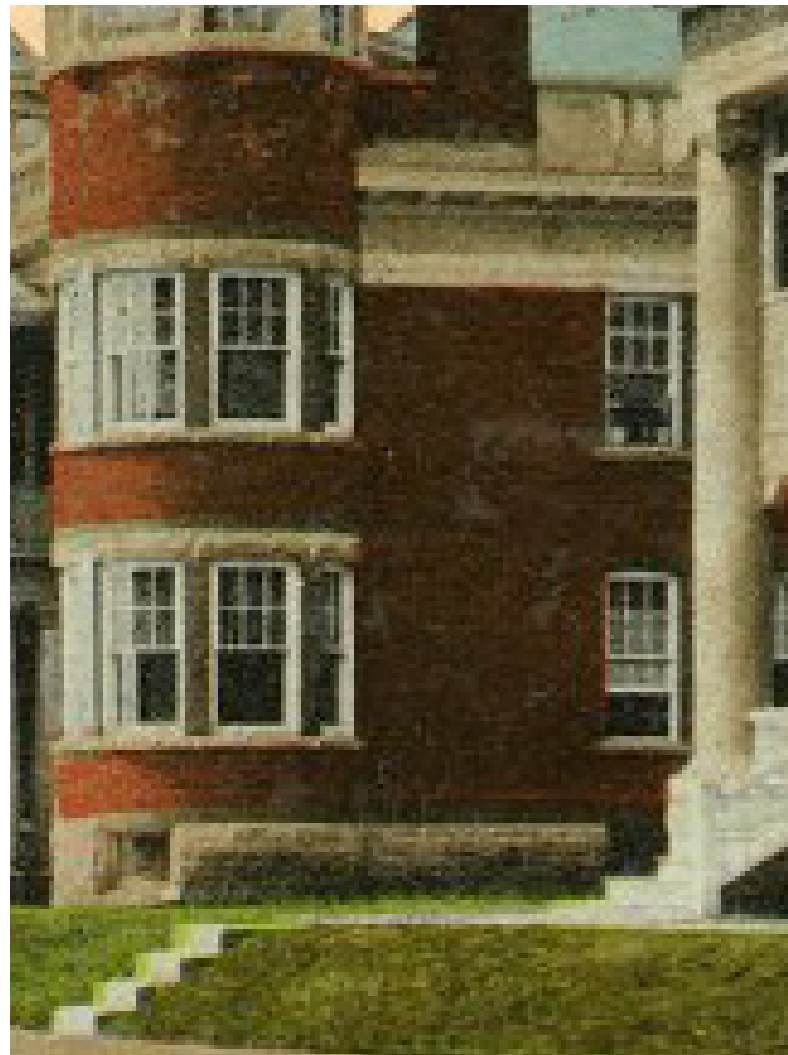


4

Windows

Design Intent

- Harmonize window styles across the building
- Apply consistent profile and divisions in keeping with historic windows



Heritage Impact Assessment Summary

- The proposed work program is intended to update the Manor Building to meet contemporary standards for inpatient care and treatment facilities.
- Limited impacts to select heritage attributes have been identified.
- The cultural heritage value of the Site is conserved through appropriate mitigation of minor impacts.
- Overall, the proposed works enable the ongoing evolution of the Manor Building and the broader Homewood Campus to accommodate innovations in healthcare programming and changing functional requirements.

Discussion