

Attachment-3 Historical Images

Figure 1 - Detail from Galt's Plan of the Town of Guelph (1827) (Guelph Civic Museum)



Figure 2 - Plan 8 (surveyed 1855; registered 1856)



Figure 3: A selection from Cooper's 1862 Map of Guelph (Guelph Civic Museum).



Figure 4: Detail from Cooper's Map showing the "British Hotel" located to the east of Lot 3 facing Carden Street and the Market Square, with Lot 1 empty, and Lot 2 showing an unnamed building. The structure to the right of Lot 2 is recessed from the street front, the remnants of which are still found on Carden Street today. The location of the British Hotel according to this map is the same as the 2 ½ - storey building located on the Fire Insurance Plan of 1875 rev 1878.

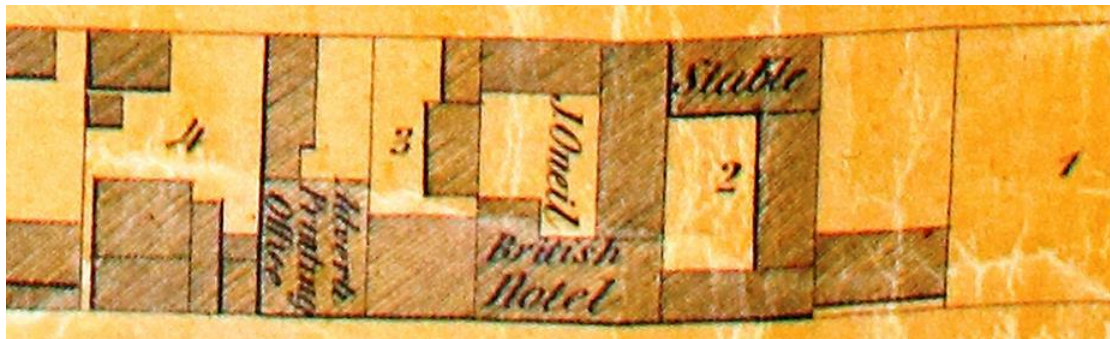


Figure 5 - Detail from Fire Insurance Plan from 1875 (revised 1878) showing the Royal Hotel. (Guelph Civic Museum)

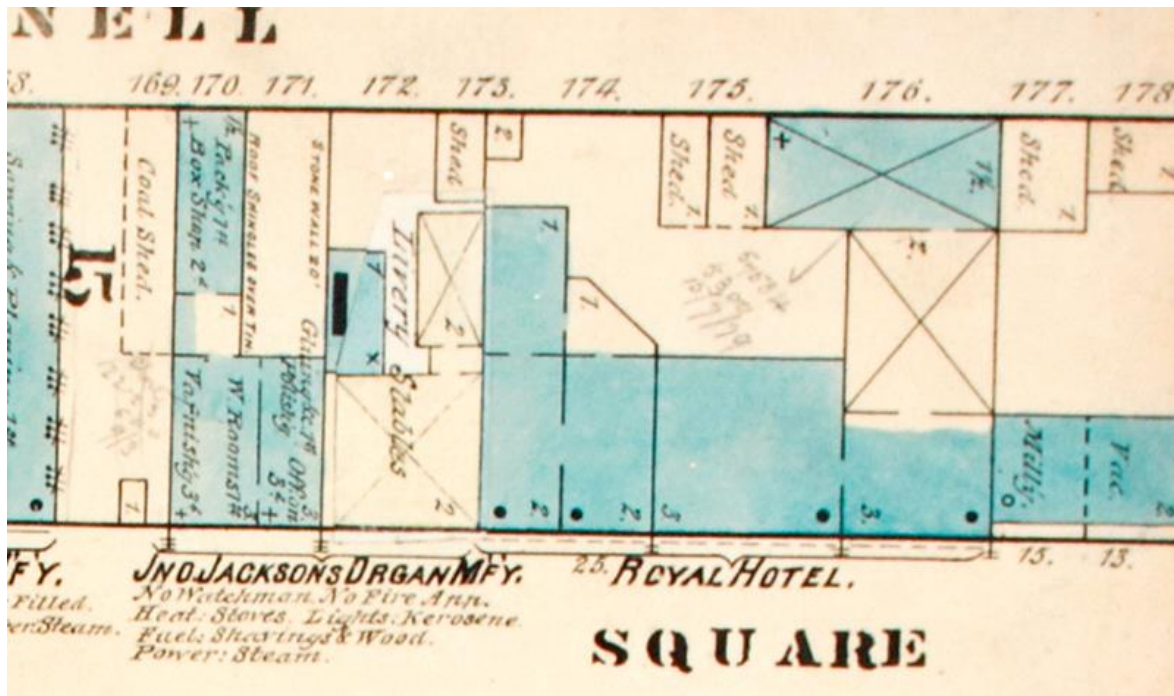


Figure 6 - Detail from Fire Insurance Plan of Guelph. Charles E. Goad, CE. (surveyed September 1881, revised to December (Guelph Civic Museum)

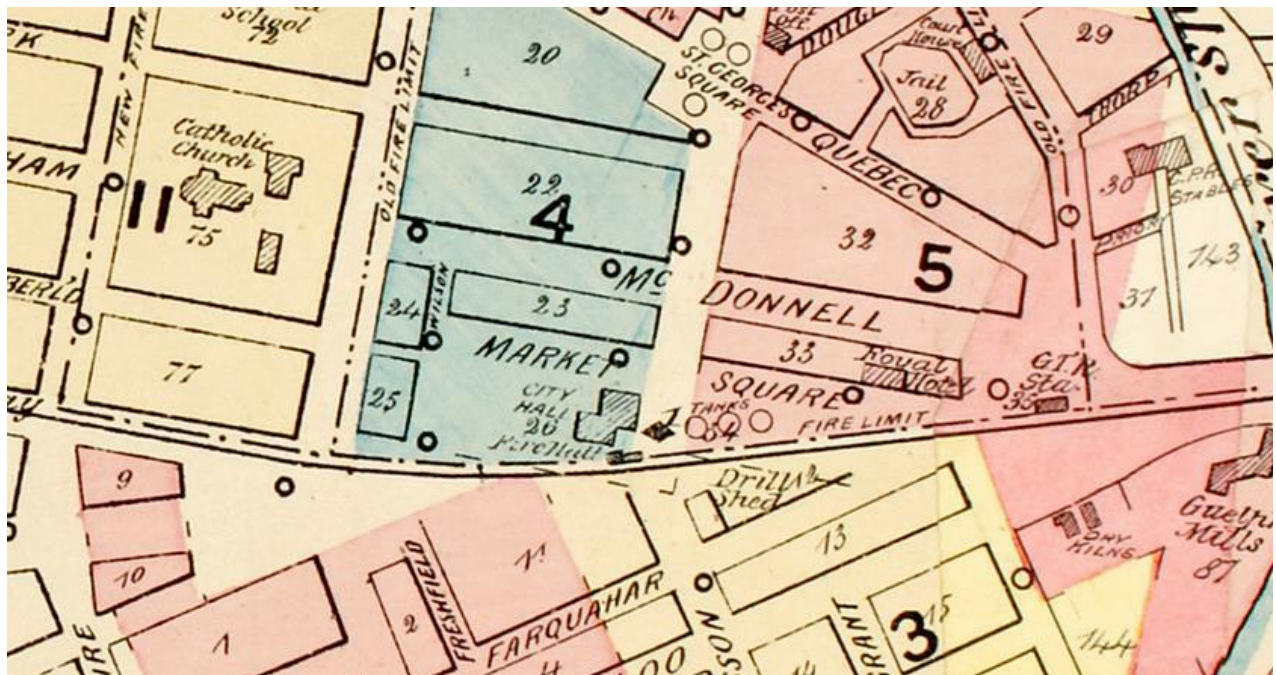


Figure 7 - Detail from Fire Insurance Plan 1881 rev 1892 Sheet 5 showing the Royal Hotel facing Market Square expanded to the left and adding stables to the north. The Bell Piano Company has a new building to the right, since demolished (Guelph Civic Museum).

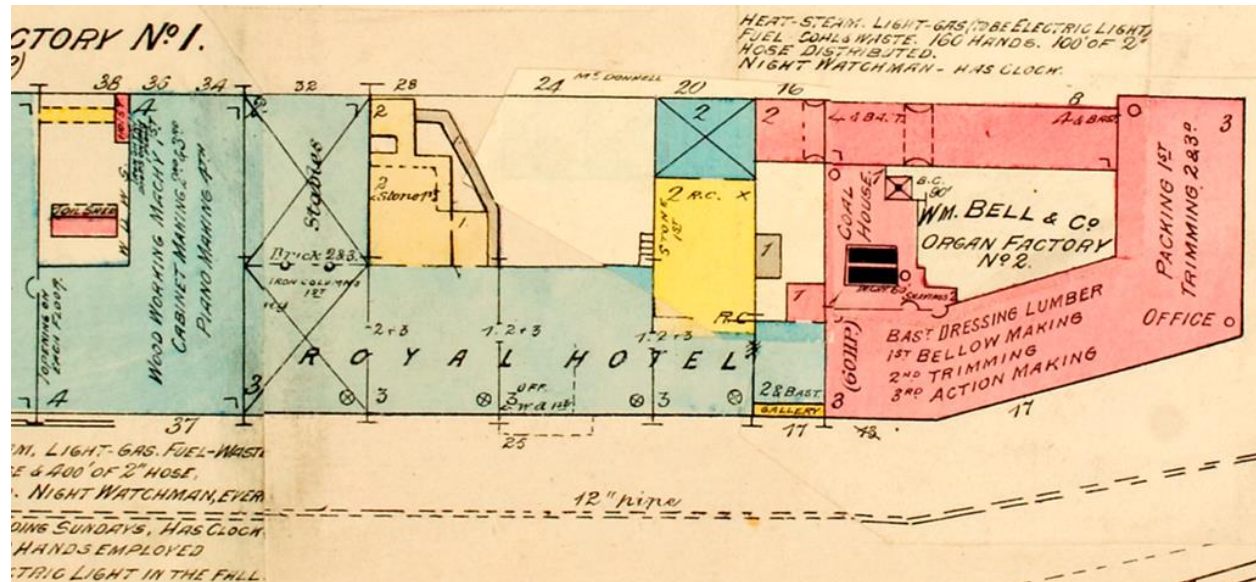


Figure 8 - Detail from Fire Insurance Plan 1897 rev 1907 Sheet 5 showing the Royal Hotel now facing Carden Street. (Guelph Civic Museum)

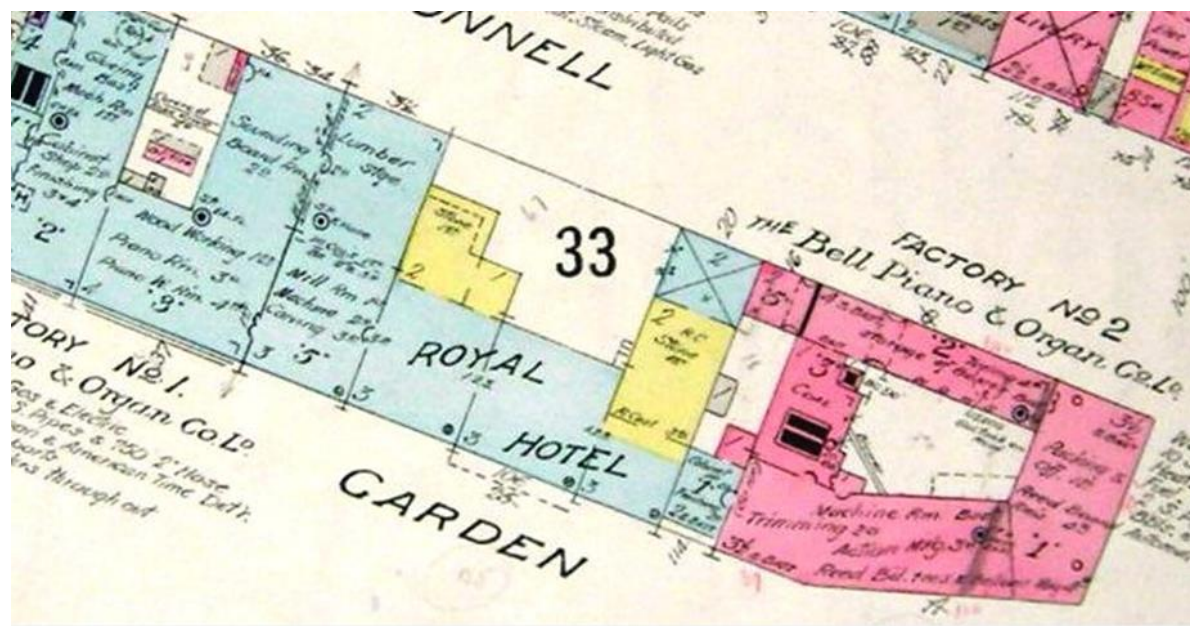


Figure 9 - Detail from Fire Insurance Plan 1897 (revised 1911) Sheet 5 showing the Royal Hotel (Guelph Civic Museum).

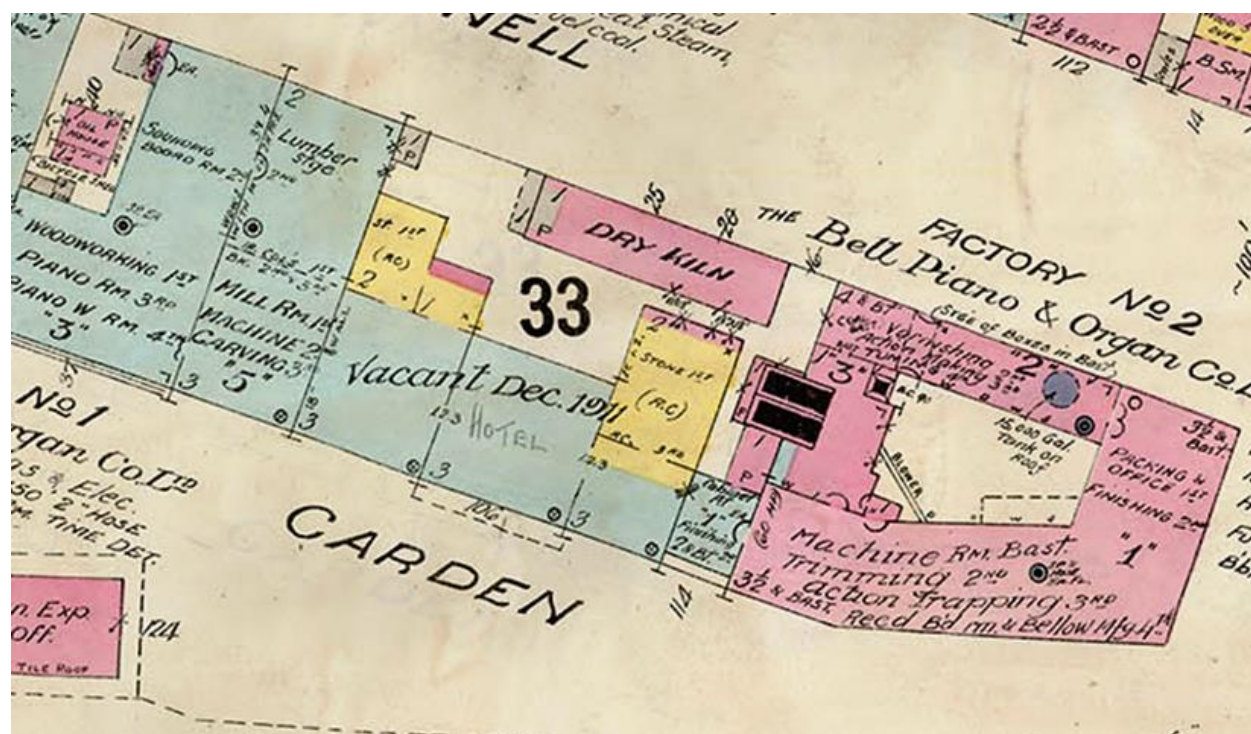


Figure 10 - Detail from Fire Insurance Plan 1960 Sheet 5 showing the Royal Hotel extended to MacDonnell Street throughout the property. The Carden Street façade is unchanged in comparison to the rest of the site. The FIP states "Fischer's Royal Hotel" as the name

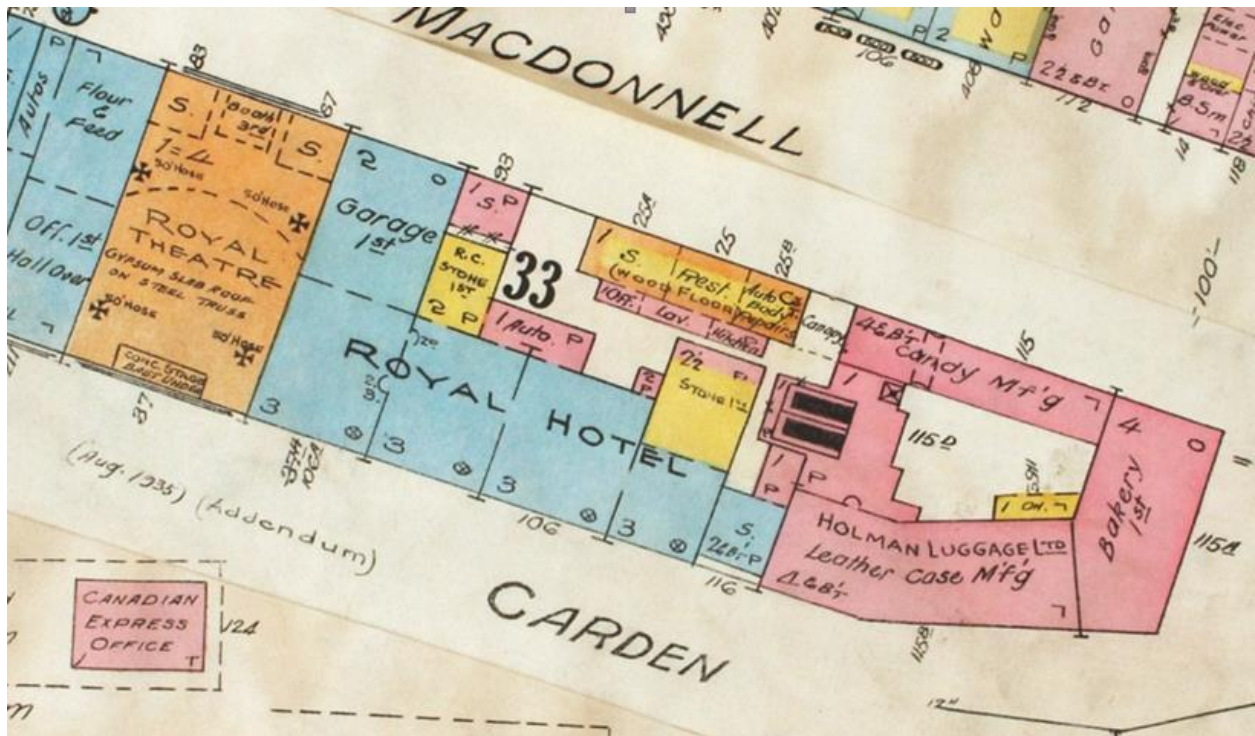


Figure 11: The Royal Hotel circa 1880s with the balcony/marquee still attached to the Carden Street façade. The two wrought iron columns are visible either side of the recessed front entry with picture windows on each side.



Figure 12: Note the change to the front entrance has brought the door flush to the façade. The balcony /marquee are still at the front entrance. Source: Guelph Public Library, circa 1905.



Figure 13 - Detail from 1931 aerial photo showing the Market Ground area. (Guelph Civic Museum 975.75.58)

