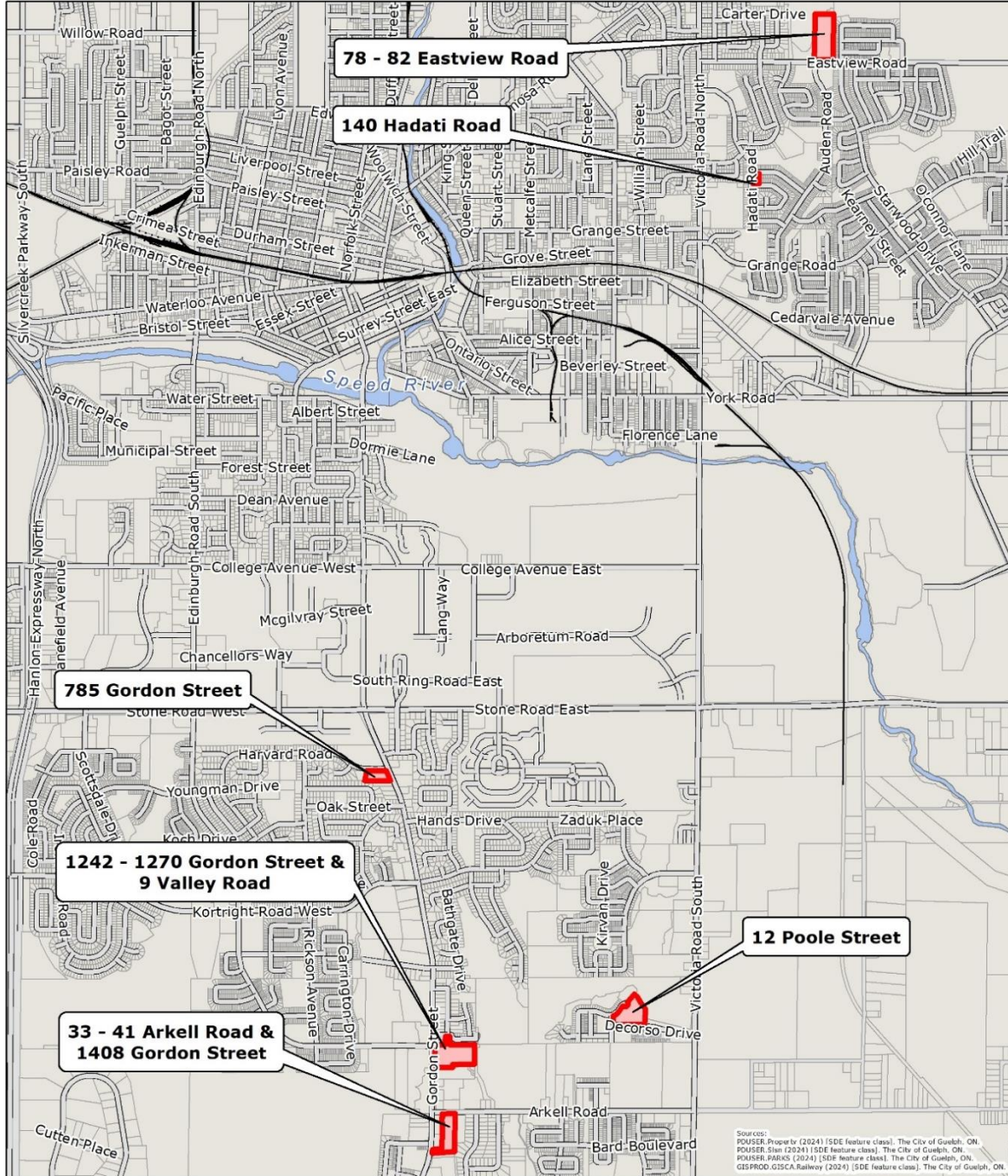


Attachment-1: Location Map

Figure 1: Map showing the sites included in these proposed amendments to the 2023 Zoning By-law



LOCATION MAP

**78 - 82 Eastview Road, 140 Hadati Road,
785 Gordon Street, 1242 - 1272 Gordon Street
& 9 Valley Road, 33 - 41 Arkell Road &
1408 Gordon Street, and 12 Poole Street**

0 125250 500 750 1,000 1,250
m

Produced by the City of Guelph
Planning and Building Services - Development Planning
August 2024

Sources:
POUSER_Property (2024) [SDE feature class]. The City of Guelph, ON.
POUSER_Slow (2024) [SDE feature class]. The City of Guelph, ON.
POUSER_PARKS (2024) [SDE feature class]. The City of Guelph, ON.
GISPROD_GISSCA.Railway (2024) [SDE feature class]. The City of Guelph, ON.