

Attachment-2 Drawings of proposed rehabilitation and alteration

Figure 1 - Proposed site plan - S1. (Harbourside Engineering Consultants, issued June 2024)

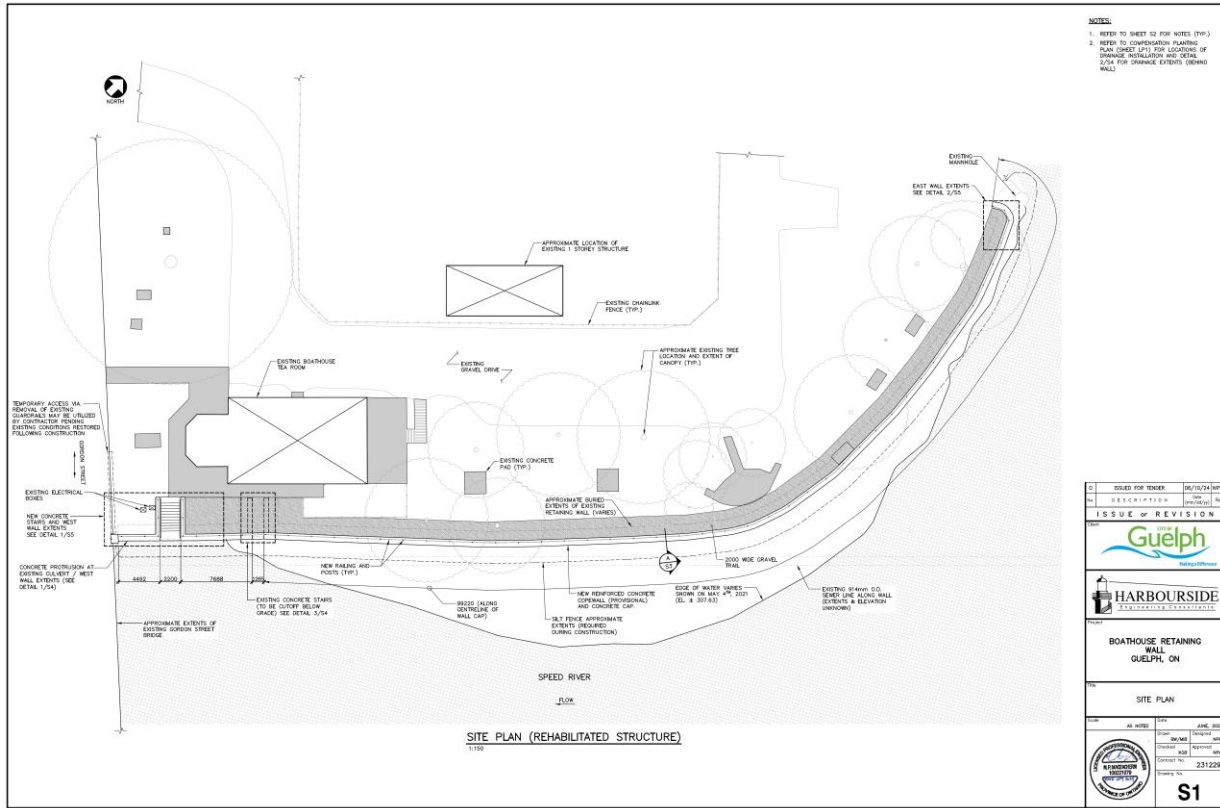


Figure 2 - Typical retaining wall repairs/rehabilitation, section and details - S3. (Harbourside Engineering Consultants, issued June 2024)

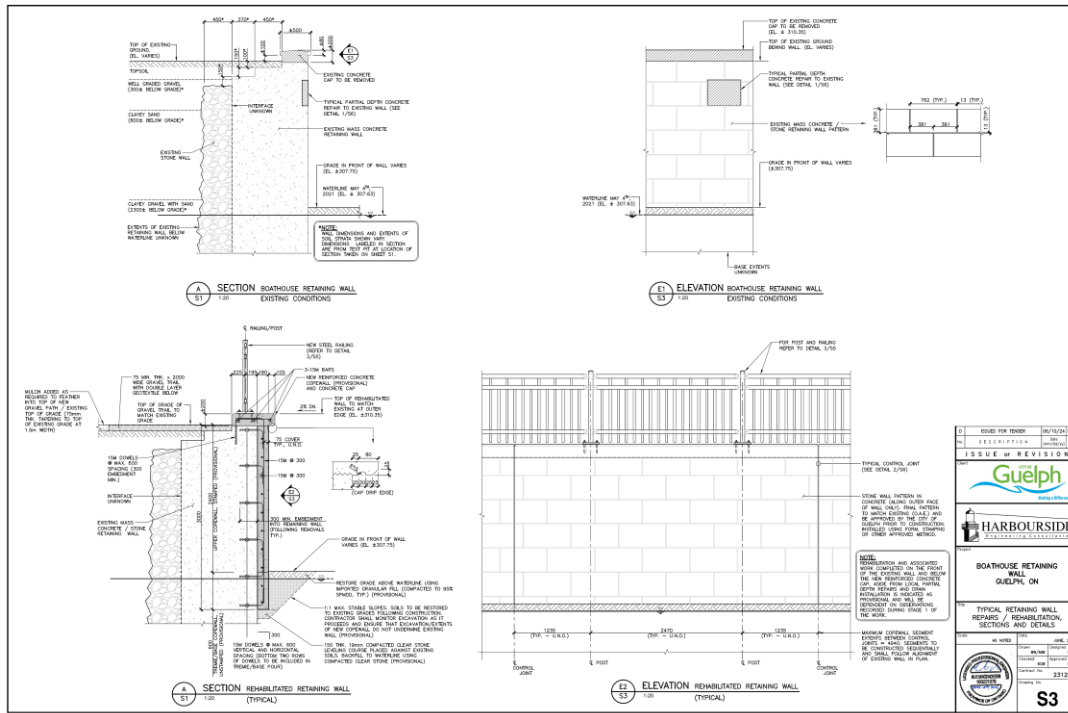


Figure 3 - Existing stairway decommissioning/wall drains, section and details - S4. (Harbourside Engineering Consultants, issued June 2024)

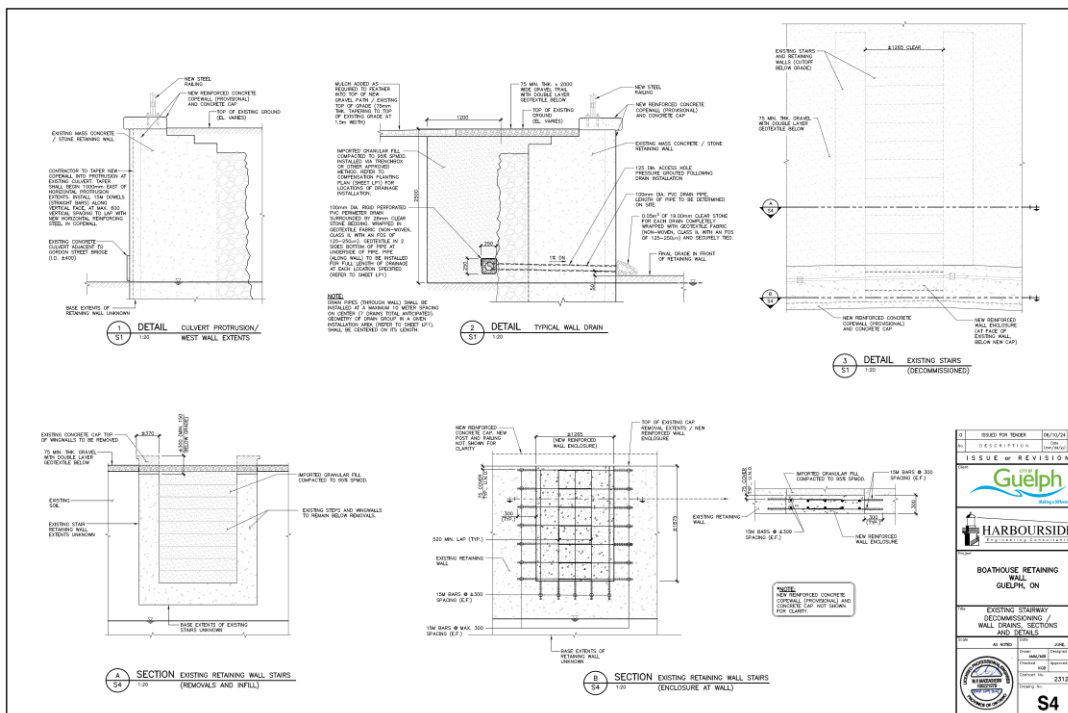


Figure 4 - Plan at E/W rehabilitated wall extents/typical railings, section and details – S5. (Harbourside Engineering Consultants, issued June 2024)

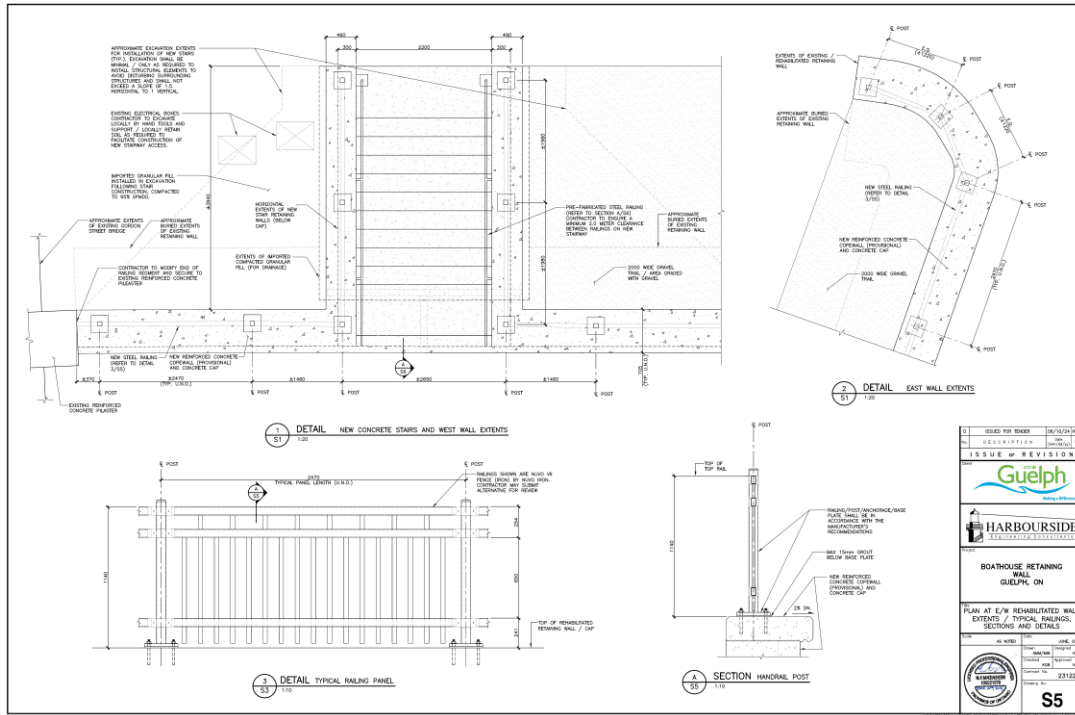


Figure 5 – Replacement stairs geometry/local repairs/control joint, sections and details – S6. (Harbourside Engineering Consultants, issued June 2024)

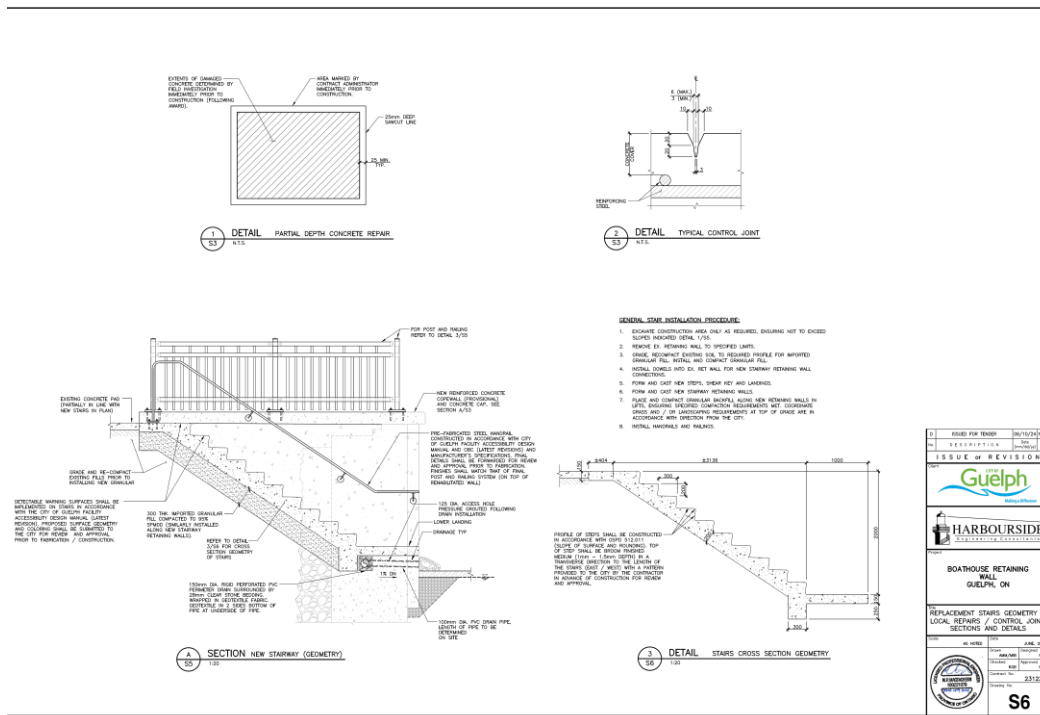


Figure 6 - Tree Preservation Plan (Aboud & Associates Inc., July 2023)

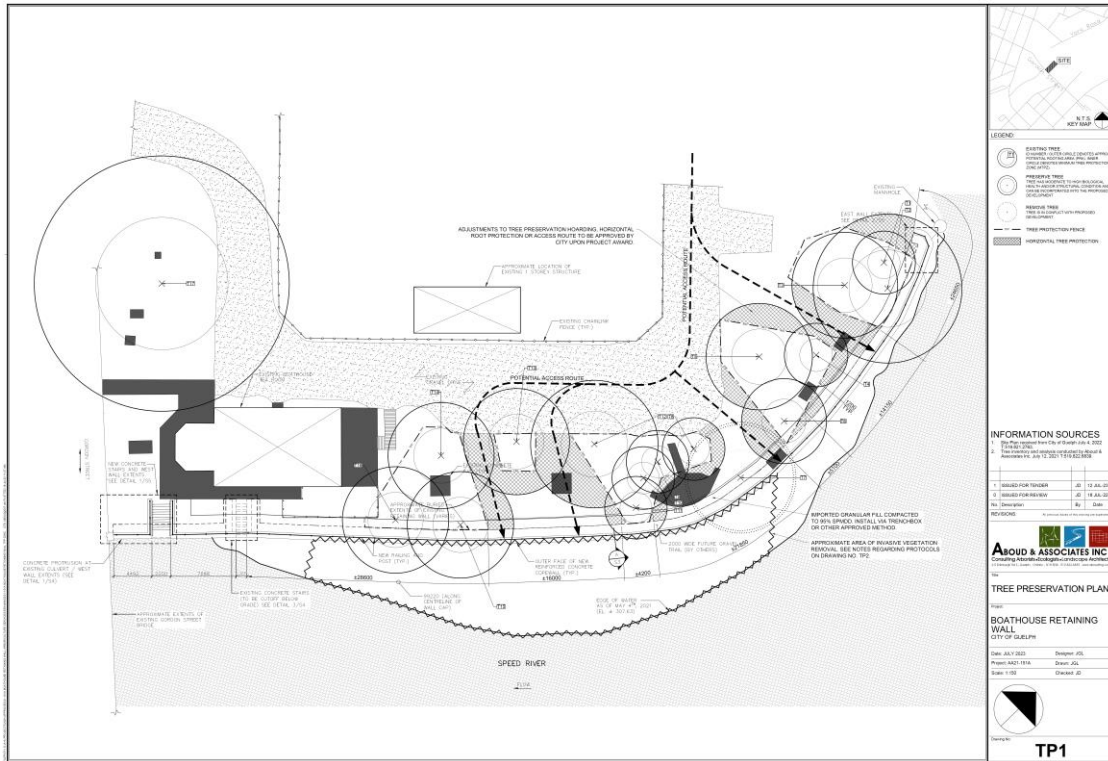


Figure 7 - Compensation Planting Plan (Aboud & Associates Inc., July 2023)

