

Attachments 1 – Historical Documentation

Instrument & No.	Date	Its Registry	Grantor	Grantee	Acreage and Consideration
1747 B&S	8 March 1850	24 April 1850	Attornies of Canada Company	Alfred Baker	All, ½ acre
1821 B&S	24 May 1850	24 April 1850	Alfred Baker	William Hooper	“
2385 Mtg.	28 Jan 1851	1 Feb 1851	William Hooper & Wife	Frederick W. Stone	84 pounds
3113 Dis. Mtg	10 Oct 1851	10 Oct 1851	Frederick W. Stone	William Hooper	“
3400 Mtg	23 Jan 1853	23 Jan 1852	William Hooper & Wife	Frederick W Stone	110 pounds
5157 Dis Mtg	13 March 1853	31 March 1853	Frederick W. Stone	William Hooper	“
3650 Mtg.	17 March 1852	17 March 1852	William Hooper	George Chuce	110 pounds
4863 Appt	3 Feb 1853	3 Feb 1853	George Chuce	Henrietta Hooper, widow.	
18073 B&S	25 Jan 1862	28 April 1862	Henrieta Hooper and William Joseph Hooper	Henry Hatch	

Instrument & No.	Date	Its Registry	Grantor	Grantee	Acreage and Consideration
18074 Mtg	18 Feb 1862	29 April 1862	Henry Hatch & Wife	William J. Hooper	400 pounds
18097 Release	2 May 1862	2 May 1862	William J Hooper	Henry Hatch	¼ acre off the SE corner
19024 Appt	5 Dec 1862	20 Dec 1862	William Hooper	Abram J.H. Hall	
1851 Dis Mtg	19 Dec 1862	19 Dec 1862	AJH Ball	Henry Hatch	
Note: "Plan 155" becomes "Hatch's Survey: Plan 156", and Lot 25 becomes Lot 9					
550 B&S	5 March 1868	5 March 1868	Henry Hatch & Wife	Fred Jasper Chadwick	All, others
873 Mtg	5 Aug 1869	8 Aug 1869	Fred J. Chadwick & Wife	Trust and Loan Company	\$4000
1058 Release	28 Sept 1869	27 Nov 1869	Trust and Loan Company	Fred J. Chadwick	
1059 B&S	1 Oct 1869	27 Nov 1869	Fred J Chadwick & Wife	David Stirton	"
1060 Mtg	1 Oct 1869	27 Nov 1869	David Stirton & Wife	FJ Chadwick	" \$2500

Instrument & No.	Date	Its Registry	Grantor	Grantee	Acreage and Consideration
1922 Dis Mtg	3 Jun 1873	9 June 1873	Trust and Loan Company	Fred J Chadwick	
1593 Mortg	6 Oct 1879	6 Oct 1879	David Stirton	James Morrison	\$2500
1596 Dis Mtg	"	"	John C Chadwick	David Stirton	
2031 Dis Mtg	26 Nov 1880	30 Nov 1880	James Morrison	David Stirton	
2032 Mtg	24 Nov 1880	"	David Stirton	James Morrison	\$3200
2033 Trust Deed	26 Nov 1880	"	"	Chalmer's Church, Trustees	
3266 Assignment of Mtg	18 Jan 1884	19 Jan 1884	James Morrison	Guelph and Ontario Investment Society	
3359 Dis Mtg	24 January 1884	3 May 1884	Trust and Loan Company	Henry Hatch	
3984 Deed	23 June 1886	30 June 1886	Chalmer's Church Trustees of Guelph	George D. Thurtell	

Instrument & No.	Date	Its Registry	Grantor	Grantee	Acreage and Consideration
3985 Dis Mtg	30 June 1886	"	Guelph and Ontario Saving Society	David Stirton	
30694 Quit Claim	12 Jan 1929	25 Jan 1929	Guy Thurtell, exec for C Thurtell (widow), dec'd and Mary D Sharpe	Guy Thurtell	Affection, \$1
31192 Grant	15 May 1929	10 June 1929	Guy Thurtell & Wife	Robert H. McGuiness and Adelaide McGuiness	Part, \$2000, sketch attached.
31193 Mortg	15 May 1929	10 June 1929	Robert H. McGuiness (bachelor) and Adelaide McGuiness (unmarried	Arthur Aldon	
Many crossed out entries.					
47480 Grant	5 March 1947	3 June 1947	Thomas W. Stewart & Wife	Gordon C. Grierson and Bernice M. Grierson	Part, \$8500 as joint tenants.

Instrument & No.	Date	Its Registry	Grantor	Grantee	Acreage and Consideration
47508 Mortg.	1 June 1947	7 June 1947	Gordon and Bernice Grierson	Emily J Dryden	Part, \$8000, not recorded in full.
57243 Grant	1 October 1952	6 October 1952	Margaret E Millar, "widow", Hugh Millar and Wistern W Lindawood, execs of James S. Millar, dec'd	Donald E. McFadzen	Part, premise and \$14,7000

Figure 1: Plan of Guelph, 1828.



Figure 4: Township of Guelph, 1858.



Figure 5: Cooper's Map of Guelph, 1862.



Figure 6: Detail from Brosius Birdseye Map, 1872. 59 Green is near the middle of the image, surrounded by trees.



Figure 7: Cooper's 1875 Map of Guelph.



Figure 8: Walker and Miles 1877 Atlas.



Figure 9: Wellington Atlas, 1906.



Figure 10: Sheet 8, FIP 1881 (Revised 1892). Note: the fine print on the left side of the image reads "Detached Stone and R.C Buildings Opposite", roughly coinciding with Emma Place/59 Green Street.

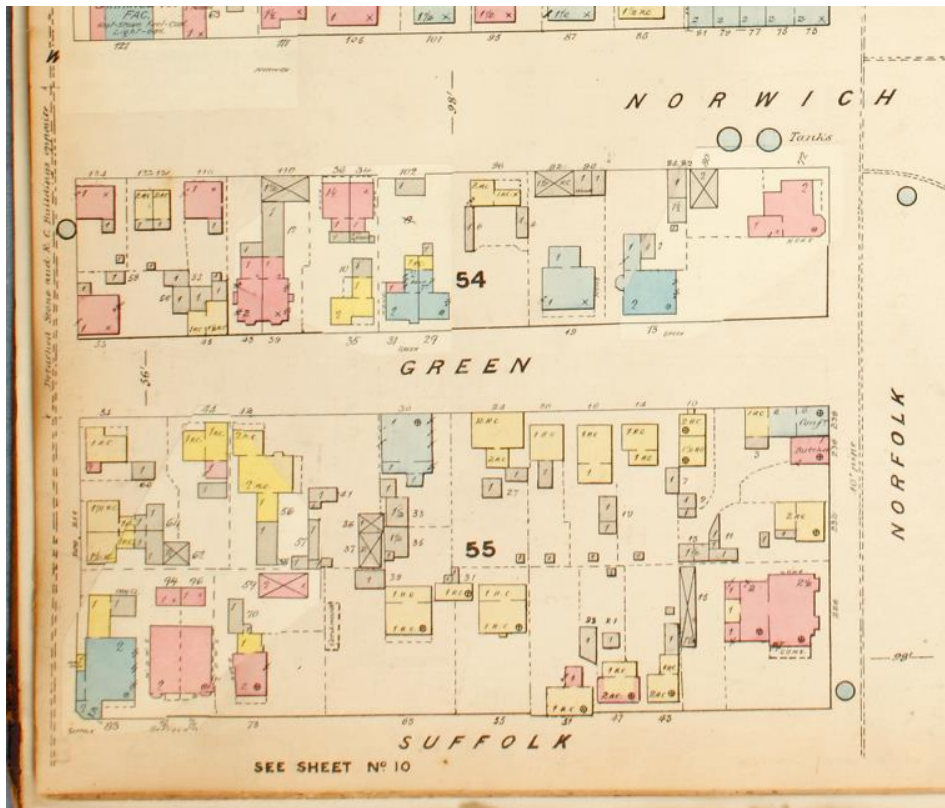


Figure 11: Sheet 15a, FIP 1897 (Revised 1907)

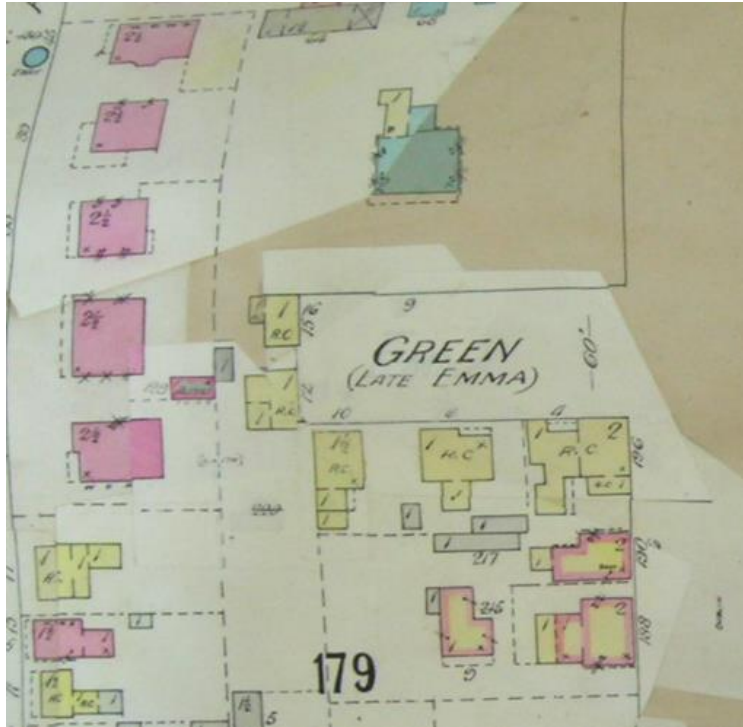


Figure 12: FIP 1897 (Revised 1911).

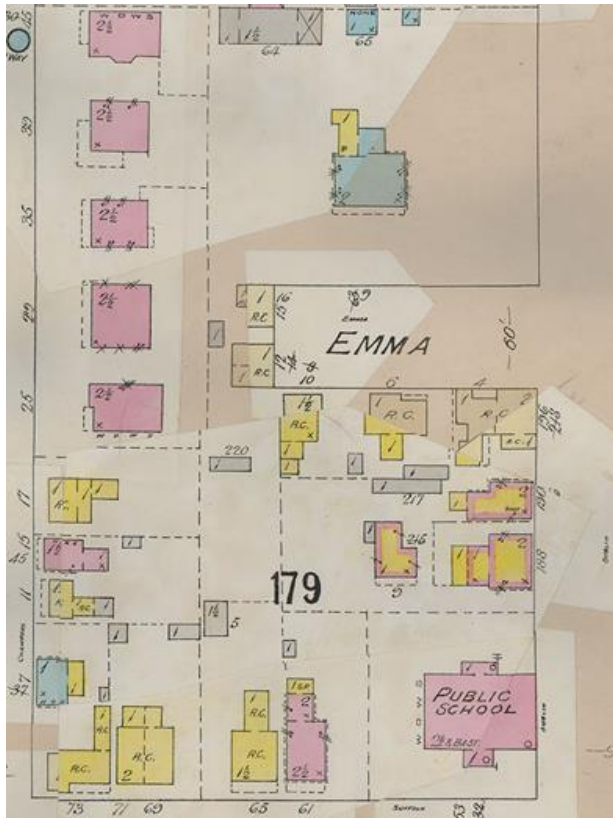


Figure 13: FIP 1922 (Revised 1929)

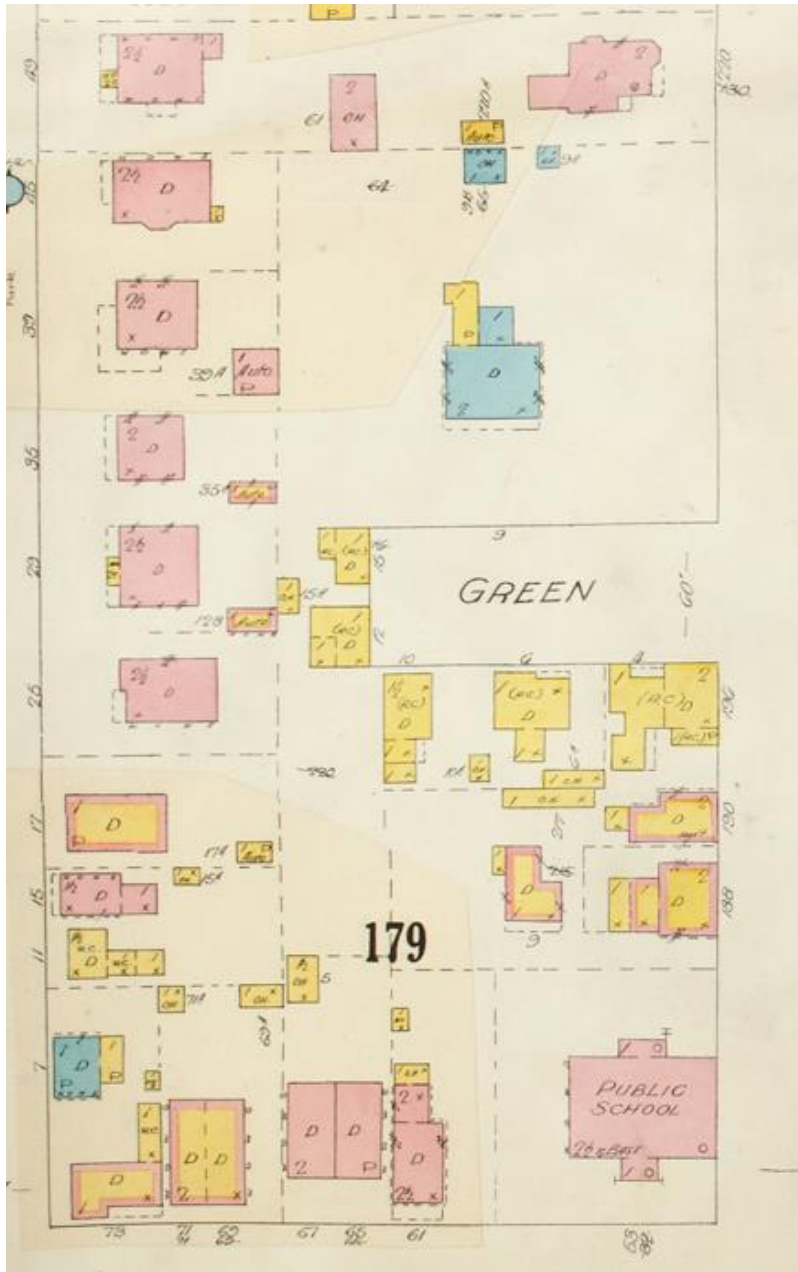


Figure 14: FIP 1922 (revised 1946)

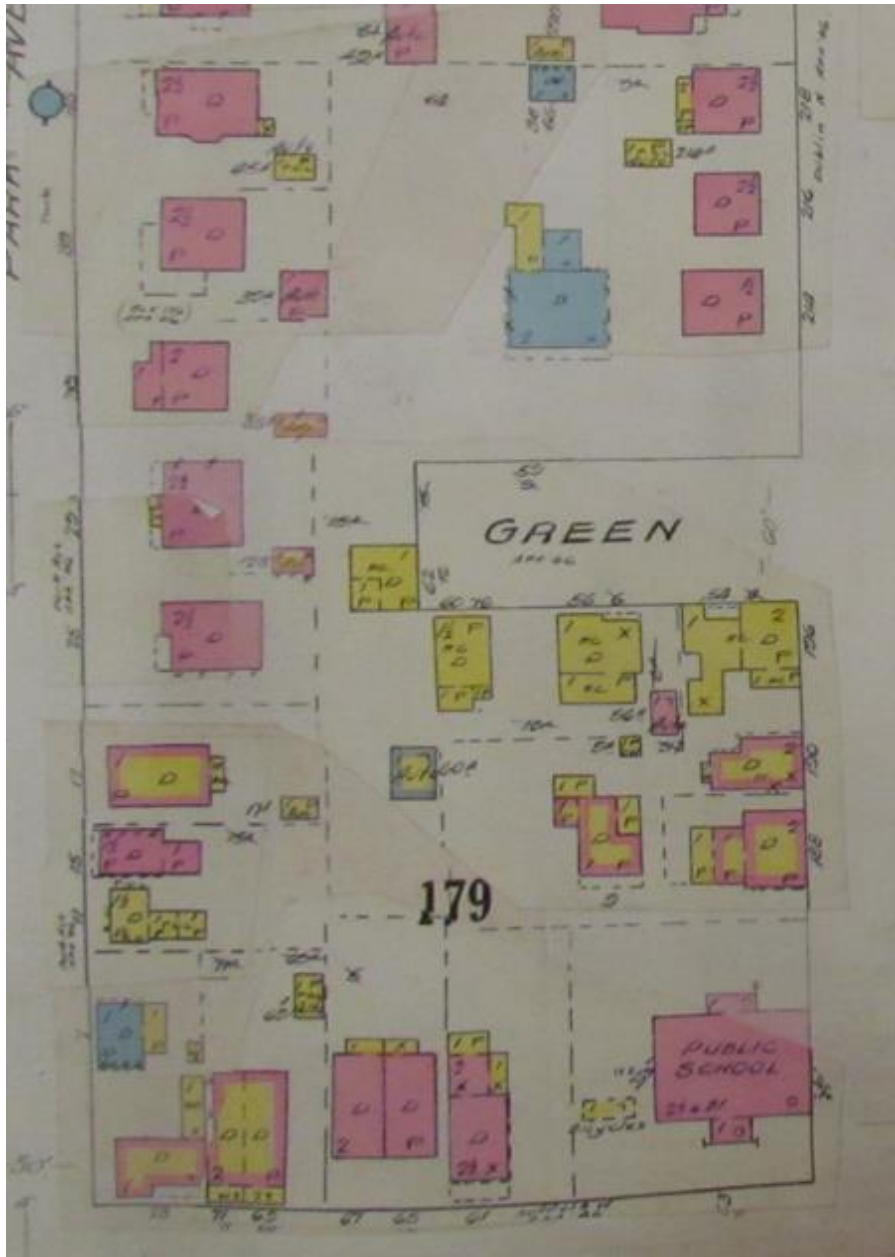


Figure 15: FIP 1960



Figure 16: Detail from 1958 Girdwood Essay.

An Old Farmhouse

At the end of Green Street always framed by beautiful flowers stands a big stone house. It was built over one hundred years ago by a fruit farmer whose farm consisted of ^{almost} the entire block. The house changed hands many times and when it was finally left vacant it was in such poor condition that with a little help from some mischievous boys it became known as the haunted house. Years later (when) the Stewarts moved in ^{and} although they did nothing to repair the house the grounds were always lovely with experimental tulips. Since the Griersons moved in twelve years ago they have done much to both repair and modernize the house. One thing that had to be done was to have a basement excavated as the house never had one.

Figure 17: 1852 Town of Guelph tax assessment record for William J. Hooper.

ASSESSMENT ROLL FOR THE TOWNSHIP OF <i>Guelph</i>													
NAMES OF TAXABLE PARTIES.	Additions.	Freeholders or Household.	Age.	REAL PROPERTY, DENOMINATION, RESIDENCE AND VALUE.					PERSONAL PROPERTY.				
				No. of Concessions, Crops, Squares, or other designation.	No. of Lots, Houses, &c.	No. of Acres, superficial Foot, or other Measure.	Value of each Lot or Parcel.	Total Value of Real Property.	No. of Horses three years or upwards.	Value of Horses.	No. of Neat Cattle three years or upwards.	Value of Neat Cattle.	No. of Pleasuro Carriages, or Carriages kept for hire.
<i>PROPRIETORS</i>													
<i>Walter Thomas</i>	<i>Blacksmith</i>	<i>24</i>	<i>50</i>	<i>John C. Lynch</i>	<i>10-11</i>	<i>1203</i>	<i>10-14</i>						
<i>William J. Hooper</i>	<i>Blacksmith</i>	<i>24</i>	<i>45</i>	<i>Jeremiah Robinson</i>	<i>11-12</i>	<i>112</i>	<i>25-36</i>						
<i>Richard Thomas</i>	<i>Carrier</i>	<i>26</i>	<i>46</i>	<i>Wm. Elworthy</i>	<i>13</i>	<i>953</i>	<i>12-0</i>						
<i>Hippiana Thomas</i>	<i>Merchant</i>	<i>24</i>	<i>42</i>	<i>Wm. Hooper</i>	<i>14-15</i>	<i>49</i>	<i>70-0</i>			<i>1</i>	<i>3</i>	<i>1</i>	
<i>Hooper W. J.</i>	<i>Govt</i>	<i>24</i>	<i>26</i>	<i>W. J. Hooper</i>	<i>16-17</i>	<i>25</i>	<i>30-0</i>	<i>2</i>	<i>25</i>	<i>1</i>	<i>4</i>	<i>1</i>	<i>3</i>

Figure 18: Census of Canada for Thurtell Family, 1891.

<i>S² 241</i>	<i>Gould Kirk</i>	<i>P 10</i>	<i>M</i>	<i>W</i>	<i>various</i>	<i>England</i>	<i>England</i>	<i>"</i>	<i>Retiree</i>	<i>farmer</i>
	<i>Thurtel George</i>	<i>M 47</i>	<i>M</i>	<i>W</i>	<i>"</i>	<i>England</i>	<i>England</i>	<i>"</i>	<i>"</i>	<i>"</i>
	<i>"</i>	<i>Jadue J 42</i>	<i>M</i>	<i>W</i>	<i>"</i>	<i>Ontario</i>	<i>Ontario</i>	<i>"</i>	<i>"</i>	<i>Farmer</i>
	<i>"</i>	<i>Est. M 18</i>	<i>-</i>	<i>S</i>	<i>"</i>	<i>"</i>	<i>"</i>	<i>"</i>	<i>"</i>	<i>"</i>
	<i>"</i>	<i>Lehard M 13</i>	<i>-</i>	<i>S</i>	<i>"</i>	<i>"</i>	<i>"</i>	<i>"</i>	<i>"</i>	<i>"</i>
	<i>"</i>	<i>Mary J 11</i>	<i>-</i>	<i>Q</i>	<i>"</i>	<i>"</i>	<i>"</i>	<i>"</i>	<i>"</i>	<i>"</i>
	<i>"</i>	<i>Sarah J 89</i>	<i>W</i>	<i>W</i>	<i>W</i>	<i>England</i>	<i>England</i>	<i>"</i>	<i>"</i>	<i>"</i>
	<i>Harlan Charlotte</i>	<i>J 36</i>	<i>-</i>	<i>W</i>	<i>W</i>	<i>England</i>	<i>England</i>	<i>"</i>	<i>"</i>	<i>"</i>
	<i>Lang M. J. J 27</i>	<i>-</i>	<i>W</i>	<i>W</i>	<i>W</i>	<i>Ireland</i>	<i>Ireland</i>	<i>R Catholic</i>	<i>General servt</i>	<i>Labourer</i>

Figure 19: Evan's Directory, 1882-1883. Page 58.

EMMA Sr.—From Dublin west between Suffolk and London road.

NORTH SIDE.
 Rev. Thos. Wardrope, D.D.
 Geo. Baines

Figure 20: Evan's Directory, 1882-1883. Page 217.

WARDROPE THOS. REV., D. D. pastor Chalmers Church, h. Emma
 Wardrope Wm. H., law student, bds. Emma